

Beware freshly generated snowdrifts

| | | | |
|--|-----------------------------------------------------------------------------------------------------------------------------------------------------------------------------------------------------------------------------------------------------------------------------|--|--|
| | Dientner Grasberge, Pongauer Grasberge, Chiemgauer Alpen, Heutal, Reiteralpe, Untersbergstock, Osterhorngruppe, Gamsfeldgruppe | | |
| | 1800 m Loferer und Leoganger Steinberge, Steinernes Meer, Hochkönig, Hagengebirge, Göllstock, Tennengebirge, Gosaukamm, Kitzbüheler Alpen, Glemmtal, Oberpinzgauer Grasberge | | |
| | Nockberge | | |
| | 1800 m Großvenedigergruppe Alpenhauptkamm, Glocknergruppe Alpenhauptkamm, Goldberggruppe Alpenhauptkamm, Ankogelgruppe, Muhr, Großvenedigergruppe Nord, Glocknergruppe Nord, Goldberggruppe Nord, Niedere Tauern Alpenhauptkamm, Niedere Tauern Süd, Niedere Tauern Nord | | |

Avalanche problems



Danger ratings



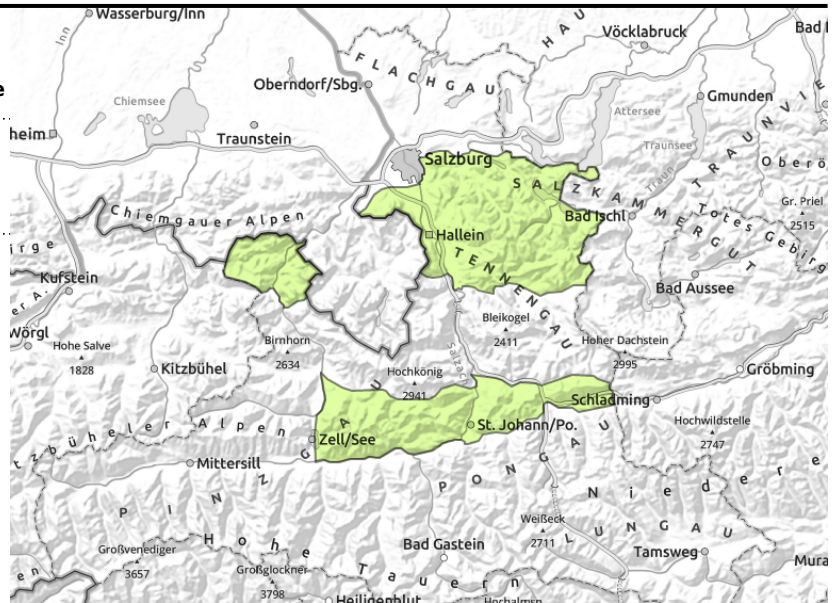
Expositions



**Dientner Grasberge, Pongauer Grasberge,
 Chiemgauer Alpen, Heutal, Reiteralpe,
 Untersbergstock, Osterhorngruppe, Gamsfeldgruppe**



behind discontinuities, near
ridges, thin/small snowdrifts



Favorable conditions

Avalanche danger is low.

Small fresh drifts can be triggered by 1 person in high ridgeline terrain or release as a small slab.

Danger zones occur on steep slopes (>30°) in NW/N/SE facing terrain. The dangers of falling outweigh those of snow masses.

Where snow is sufficient, small glide-snow avalanches can release naturally. Avoid zones below glide cracks.

Loose-snow avalanches can in isolated cases in extremely steep terrain (>40°) release naturally or by 1 person, releases small.

Snowpack structure

Another 10 cm of fresh snow is expected atop the fresh snow of recent days. Blanketed fresh snow or graupel can be a near-surface weak layer. As a result of solar radiation the fresh snow settles, bonding is generally good. Atop snowy steep rocks and grassy slopes the snowpack is wet at ground level and can glide away.

Weather

Heavily overcast skies at night, repeated bouts of snowfall, light winds. On Wednesday, poor visibility in the morning, the summits in fog. In the Northern Alps frequent snowfall; south of the Salzachtal, less snowfall. Generally, 10cm of fresh snow expected, brisk NW winds. In afternoon the precipitation will taper off, visibility improve, clouds disperse. At 2000 m: -5 degrees.

Outlook

Avalanche danger levels are not expected to change significantly.

Avalanche problems



New snow



Wind drifted snow



Persistent weak layer



Wet snow



Gliding snow



Cornices



no distinct

Danger ratings



1
low



2
moderate



3
considerable



4
high





5
very high



Expositions

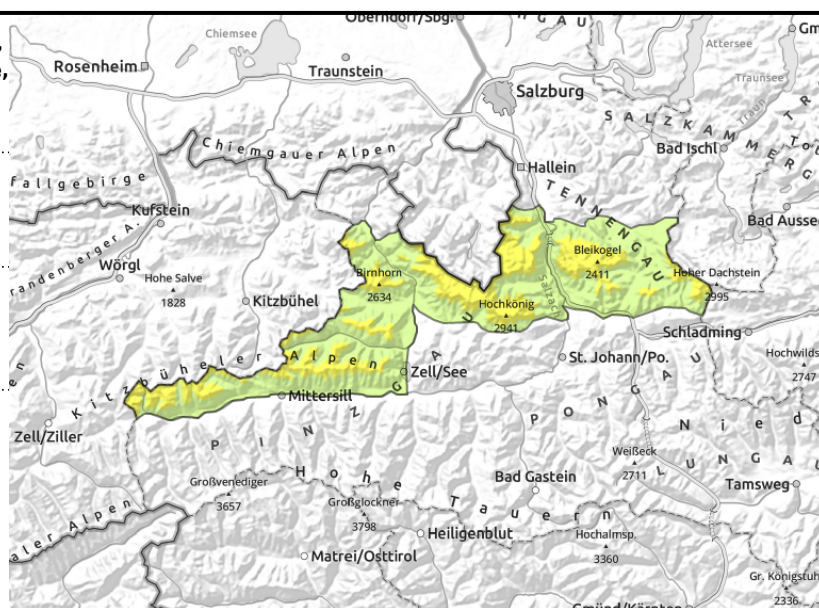


Loferer und Leoganger Steinberge, Steinernes Meer, Hochkönig, Hagengebirge, Göllstock, Tennengebirge, Gosaukamm, Kitzbüheler Alpen, Glemmtal, Oberpinzgauer Grasberge



  behind discontinuities, in gullies, steep bowls

  fresh snowfall + little wind



Assess fresh snowdrifts with caution

Avalanche danger above 1800 m is MODERATE, below that altitude danger is low.

Fresh ridgeline snowdrifts can be triggered as a small slab even by 1 person. Danger zones occur on steep slopes (over 30°) on NW/N/SE facing slopes.

Where snow is sufficient, small glide-snow avalanches can release naturally. Avoid zones below glide cracks.

Loose-snow avalanches can in isolated cases in extremely steep terrain (>40°) release naturally or by 1 person, releases small.

Snowpack structure

Another 10 cm of fresh snow is expected atop the fresh snow of recent days. Blanketed fresh snow or graupel can be a near-surface weak layer. As a result of solar radiation the fresh snow settles, bonding is generally good.

Atop snowy steep rocks and grassy slopes the snowpack is wet at ground level and can glide away.

Weather

Heavily overcast skies at night, repeated bouts of snowfall, light winds. On Wednesday, poor visibility in the morning, the summits in fog. In the Northern Alps frequent snowfall; south of the Salzachtal, less snowfall. Generally, 10cm of fresh snow expected, brisk NW winds. In afternoon the precipitation will taper off, visibility improve, clouds disperse. At 2000 m: -5 degrees; at 3000 m: -12 degrees.

Outlook

Avalanche danger levels are not expected to change significantly.

Avalanche problems



Danger ratings



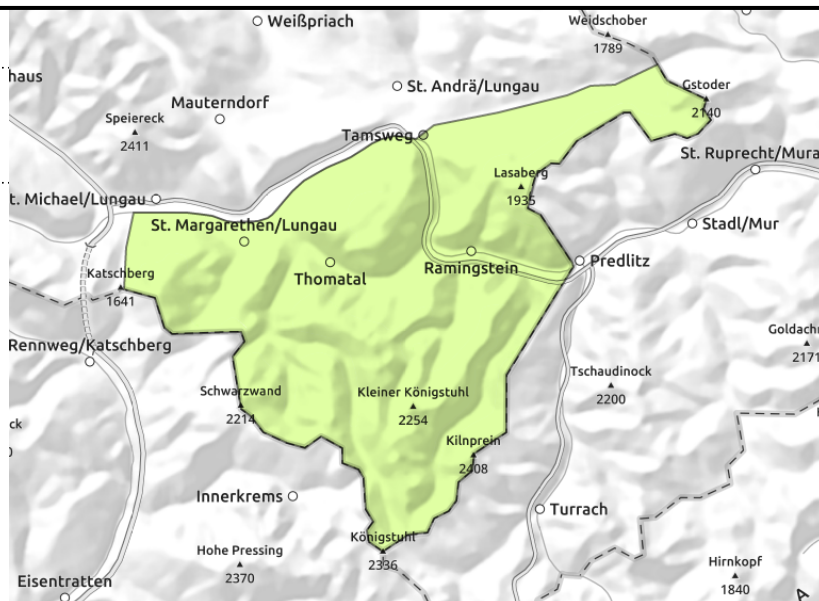
Expositions



Nockberge



behind discontinuities, in gullies, steep bowls



Favorable conditions

Avalanche danger is low.

Fresh snowdrift accumulations in high altitude ridgeline terrain are small, can trigger a small slab. Danger of falling outweighs that of snow masses.

Snowpack structure

During the course of the day, 10 cm of fresh snow is expected, atop the snowfall from Tuesday. Inside the fresh snow, a weak layer can form. Bonding is generally good, the base is compact.

Weather

Heavily overcast skies at night, repeated bouts of snowfall, light winds. On Wednesday, poor visibility in the morning, the summits in fog. In the Northern Alps frequent snowfall; south of the Salzachtal, less snowfall. Generally, 10cm of fresh snow expected, brisk NW winds. In afternoon the precipitation will taper off, visibility improve, clouds disperse. At 2000 m: -5 degrees; at 3000 m: -12 degrees.

Outlook

Avalanche danger levels are not expected to change significantly.

Avalanche problems



New snow



Wind drifted snow



Persistent weak layer



Wet snow



Gliding snow



Cornices



no distinct

Danger ratings



1

low



2

moderate



3

considerable



4

high



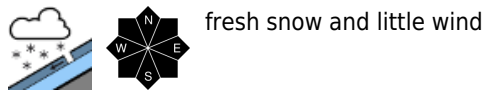
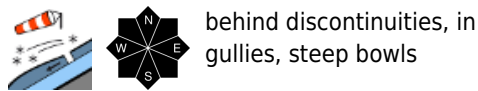
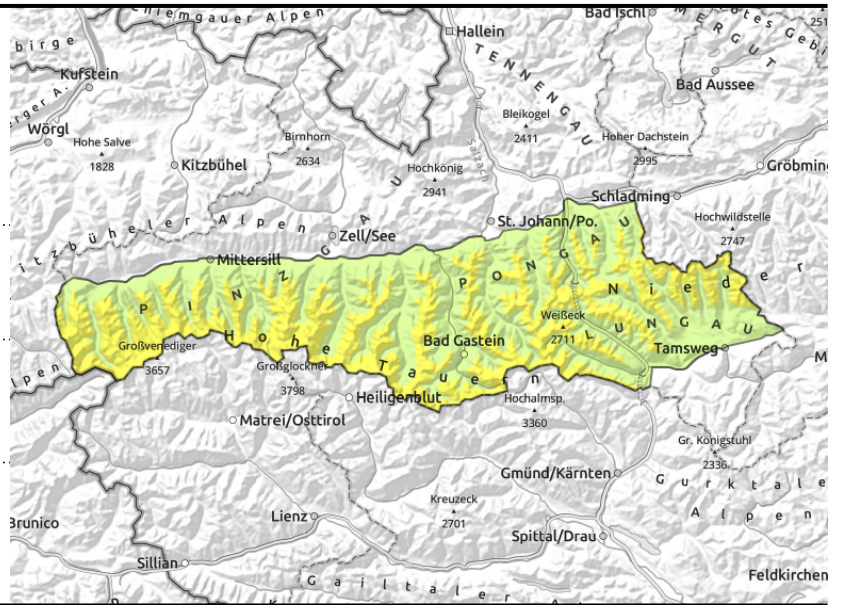
5

very high

Expositions



Großvenedigergruppe Alpenhauptkamm, Glocknergruppe Alpenhauptkamm, Goldberggruppe Alpenhauptkamm, Ankogelgruppe, Muhr, Großvenedigergruppe Nord, Glocknergruppe Nord, Goldberggruppe Nord, Niedere Tauern Alpenhauptkamm, Niedere Tauern Süd, Niedere Tauern Nord



Beware fresh and older snowdrift accumulations

Avalanche danger above 1800 m is MODERATE, below that altitude danger is low.

Fresh and older snowdrift accumulations can be triggered by 1 person in high and high-alpine terrain as a medium-sized slab. Most danger zones occur behind discontinuities and in wind-loaded gullies and bowls, they can be blanketed and difficult to recognize.

Due to solar radiation and diffuse light, small loose-snow avalanches can release naturally in extremely steep (>40°) terrain. In places, small loose-snow avalanches can be triggered by 1 person. In isolated cases, glide-snow avalanches, medium-sized, can release naturally at any time, esp. where the snow fell on bare ground. Avoid zones below glide cracks.

Snowpack structure

Another 10 cm of fresh snow is expected atop the fresh snow of recent days. Blanketed fresh snow or graupel can be a near-surface weak layer. As a result of solar radiation the fresh snow settles, bonding is generally good. Atop snowy steep rocks and grassy slopes the snowpack is wet at ground level and can glide away. Reserves of cold are limited to shady slopes above 2600 m.

Weather

Heavily overcast skies at night, repeated bouts of snowfall, light winds. On Wednesday, poor visibility in the morning, the summits in fog. In the Northern Alps frequent snowfall; south of the Salzachtal, less snowfall. Generally, 10cm of fresh snow expected, brisk NW winds. In afternoon the precipitation will taper off, visibility improve, clouds disperse. At 2000 m: -5 degrees.

Outlook

Avalanche danger levels are not expected to change significantly.

Translated by Jeffrey McCabe, www.creativtrans.com

Avalanche problems



Danger ratings



Expositions

