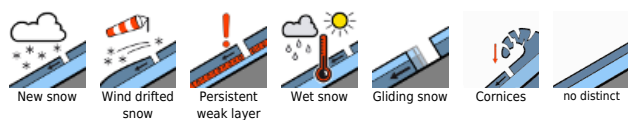


Freshly generated snowdrifts on Main Alpine Ridge

	Dientner Grasberge, Pongauer Grasberge, Niedere Tauern Nord, Kitzbüheler Alpen, Glemmtal, Chiemgauer Alpen, Heutal, Reiteralpe, Untersbergstock, Osterhorngruppe, Gamsfeldgruppe	
	1800 m Loferer und Leoganger Steinberge, Steinernes Meer, Hochkönig, Hagengebirge, Göllstock, Tennengebirge, Gosaukamm	
	Nockberge	
	1800 m Großenedigergruppe Alpenhauptkamm, Glocknergruppe Alpenhauptkamm, Goldberggruppe Alpenhauptkamm, Ankogelgruppe, Muhr, Oberpinzgauer Grasberge, Großenedigergruppe Nord, Glocknergruppe Nord, Goldberggruppe Nord, Niedere Tauern Alpenhauptkamm, Niedere Tauern Süd	

Avalanche problems



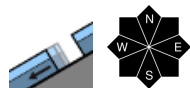
Danger ratings



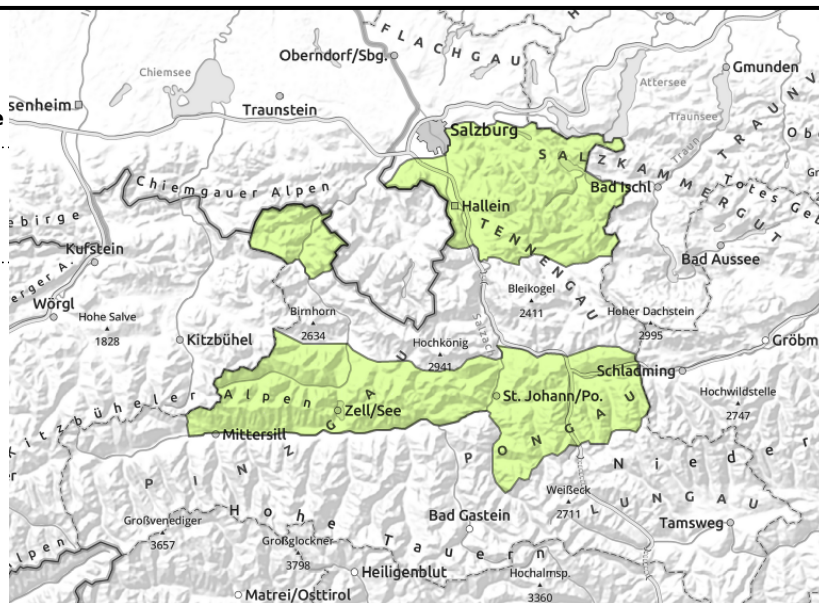
Expositions



Dientner Grasberge, Pongauer Grasberge, Niedere Tauern Nord, Kitzbüheler Alpen, Glemmtal, Chiemgauer Alpen, Heutal, Reiteralpe, Untersbergstock, Osterhorngruppe, Gamsfeldgruppe



on extremely steep grass-covered slopes, possible anytime



Favorable conditions

Avalanche danger is low.

Where fresh snow fell on bare ground small glide-snow avalanches can release. Avoid zones below glide cracks.

Loose-snow avalanches can in isolated cases in extremely steep terrain (>40°) release naturally or by 1 person, releases small.

Snowpack structure

An additional 5 cm of snowfall is expected during the course of the day, atop the fresh snow from the last few days. Due to solar radiation it will settle quickly, bond well. On steep rock plates and grassy slopes recently snowed upon, the snowpack is wet at ground level, can glide away.

Weather

Nighttime skies will be overcast, weak N/E winds, minor snowfall. On Tuesday, the peaks will be hidden in fog, repeated bouts of snowfall expected (5 cm). The northerly winds will be light. At 2000 m: -5 degrees.

Outlook

Avalanche danger levels are not expected to change significantly.

Avalanche problems



Danger ratings




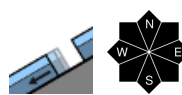
Expositions

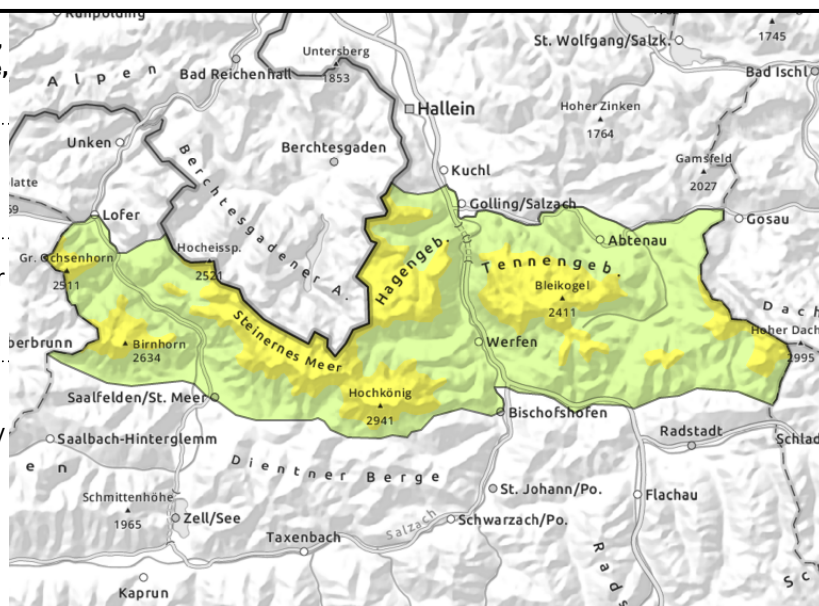


Loferer und Leoganger Steinberge, Steinernes Meer, Hochkönig, Hagengebirge, Göllstock, Tennengebirge, Gosaukamm



 loose-snow activity due to solar radiation

 in extremely steep grass-covered terrain, possible at any time



Moderate loose-snow/gliding snow activity

Avalanche danger above 1800 m is MODERATE, below that altitude danger is low. Due to solar radiation and diffuse light, small loose-snow avalanches can release naturally in extremely steep (>40°) terrain. In places, small loose-snow avalanches can be triggered by 1 person. In isolated cases, glide-snow avalanches, medium-sized, can release naturally at any time, esp. where the snow fell on bare ground. Avoid zones below glide cracks. Blanketed snowdrifts at high and high-alpine altitudes can trigger a small slab by large additional loading.

Snowpack structure

Atop the fresh fallen snow, another 5-10 cm is expected during the day. Bonding mostly adequate but can be lost inside the masses of fresh snow. In the uppermost part of the snowpack there may be weak layers. The fresh snow is settling. Reserves of cold are limited to shady slopes above 2600 m. On steep rock plates and grassy slopes recently snowed upon, the snowpack is wet at ground level, can glide away.

Weather

Nighttime skies will be overcast, weak N/E winds, minor snowfall. On Tuesday, the peaks will be hidden in fog, repeated bouts of snowfall expected (5 cm). The northerly winds will be light. At 2000 m: -5 degrees; at 3000 m: -10 degrees.

Outlook

Avalanche danger levels are not expected to change significantly.

Avalanche problems



Danger ratings



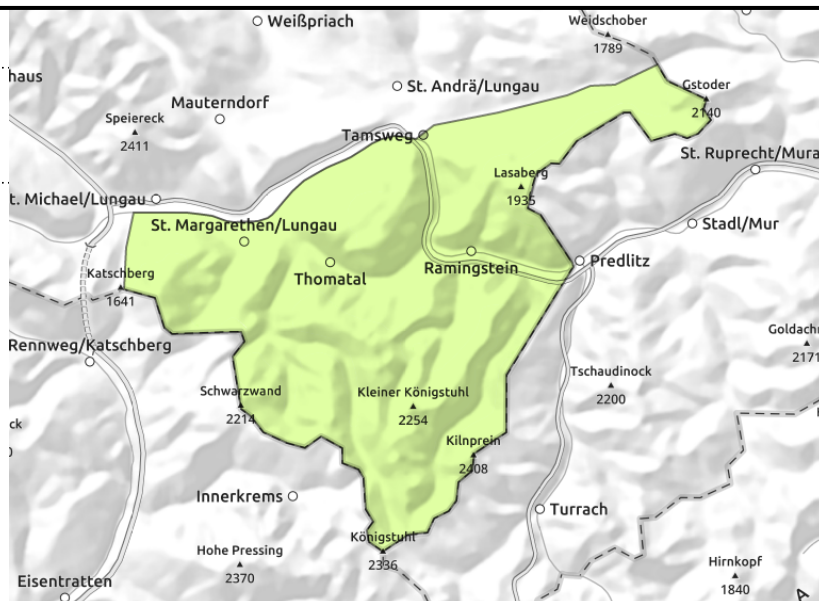
Expositions



Nockberge



isolated, thin



Favorable conditions

Avalanche danger is low.

Fresh snowdrift accumulations in high altitude ridgeline terrain are small, can trigger a small slab.
Danger of falling outweighs that of snow masses.

Snowpack structure

Atop bare ground or a thoroughly wet snowpack, 20 cm of fresh snow lie deposited from Tuesday, settled and well bonded, the base is compact.

Weather

Nighttime skies will be overcast, weak N/E winds, minor snowfall (10-15 cm). On Tuesday, the peaks will be hidden in fog, repeated bouts of snowfall expected (up to 20 cm). The northerly winds will be light. At 2000 m: -5 degrees.

Outlook

Avalanche danger levels are not expected to change significantly.

Avalanche problems



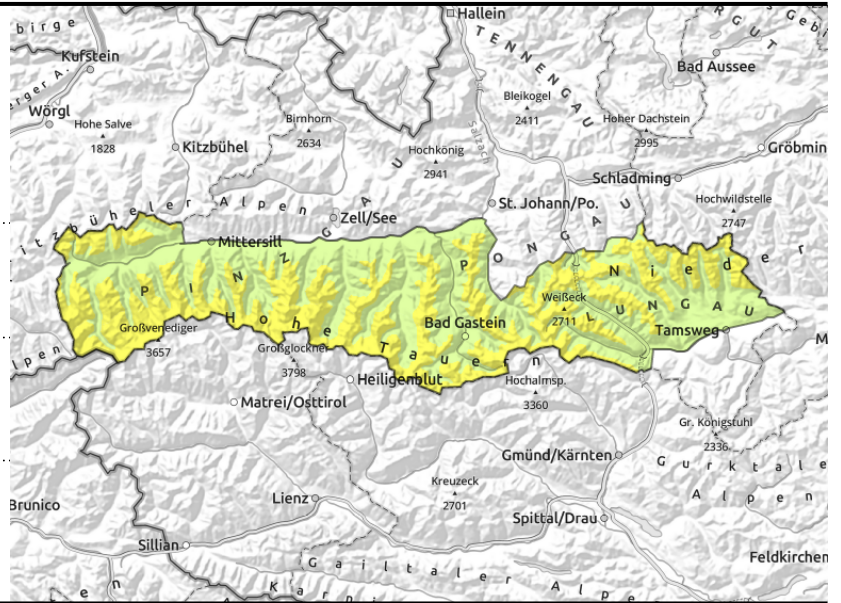
Danger ratings



Expositions



Großvenedigergruppe Alpenhauptkamm, Glocknergruppe Alpenhauptkamm, Goldberggruppe Alpenhauptkamm, Ankogelgruppe, Muhr, Oberpinzgauer Grasberge, Großvenedigergruppe Nord, Glocknergruppe Nord, Goldberggruppe Nord, Niedere Tauern Alpenhauptkamm, Niedere Tauern Süd



behind discontinuities, in gullies, steep bowls



fresh snow and little wind

Fresh and older snowdrift accumulations prone to triggering

Avalanche danger above 1800 m is MODERATE, below that altitude danger is low.

Fresh and older snowdrift accumulations can be triggered by 1 person in high and high-alpine terrain as a medium-sized slab. Most danger zones occur behind discontinuities and in wind-loaded gullies and bowls, they can be blanketed and difficult to recognize.

Due to solar radiation and diffuse light, small loose-snow avalanches can release naturally in extremely steep (>40°) terrain. In places, small loose-snow avalanches can be triggered by 1 person. In isolated cases, glide-snow avalanches, medium-sized, can release naturally at any time, esp. where the snow fell on bare ground. Avoid zones below glide cracks.

Snowpack structure

Atop the fresh fallen snow, another 20 cm is expected during the day. Bonding mostly adequate but can be lost inside the masses of fresh snow. In the uppermost part of the snowpack there may be weak layers. The fresh snow is settling. Reserves of cold are limited to shady slopes above 2600 m. On steep rock plates and grassy slopes recently snowed upon, the snowpack is wet at ground level, can glide away.

Weather

Nighttime skies will be overcast, weak N/E winds, minor snowfall. On Tuesday, the peaks will be hidden in fog, repeated bouts of snowfall expected (5 cm). The northerly winds will be light. At 2000 m: -5 degrees; at 3000 m: -10 degrees.

Outlook

Avalanche danger levels are not expected to change significantly.

Translated by Jeffrey McCabe, www.creativtrans.com

Avalanche problems



Danger ratings



Expositions

