

## Loose-snow activity and blanketed snowdrift masses

	Kitzbüheler Alpen, Glemmtal, Dientner Grasberge, Pongauer Grasberge, Chiemgauer Alpen, Heutal, Reiteralpe, Niedere Tauern Nord	 
	2000 m Goldberggruppe Nord, Ankogelgruppe, Muhr, Niedere Tauern Süd, Niedere Tauern Alpenhauptkamm	   
	Nockberge	 
	2000 m Großvenedigergruppe Nord, Großvenedigergruppe Alpenhauptkamm, Glocknergruppe Nord, Glocknergruppe Alpenhauptkamm, Goldberggruppe Alpenhauptkamm, Oberpinzgauer Grasberge	   
	2000 m Loferer und Leoganger Steinberge, Steinernes Meer, Hochkönig, Hagengebirge, Göllstock, Tennengebirge, Gosaukamm	   

### Avalanche problems



### Danger ratings



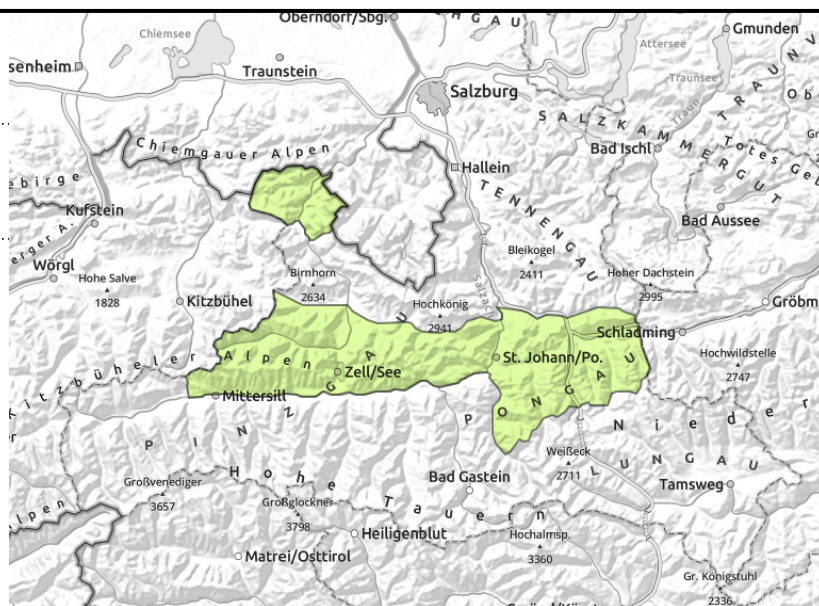
### Expositions



**Kitzbüheler Alpen, Glemmtal, Dientner Grasberge,  
Pongauer Grasberge, Chiemgauer Alpen, Heutal,  
Reiteralpe, Niedere Tauern Nord**



small amount of fresh snow,  
covered snowdrift patches



## Favorable conditions

Avalanche danger is low.

Loose-snow avalanches can in isolated cases in extremely steep terrain ( $>40^\circ$ ) release naturally or by 1 person, releases small.

In addition, snowdrifts blanketed by fresh snow can trigger a small slab in high-altitude ridgeline terrain. Danger of falling outweighs that of snow masses.

## Snowpack structure

Atop bare ground or a thoroughly wet snowpack, 10-30 cm of fresh snow lie deposited. The snowdrift accumulations from Saturday are bonding swiftly with the snowpack beneath.

## Weather

On Saturday night a bit of snowfall is possible (5 cm), the NW winds will slacken off noticeably. On Sunday, clouds will initially reduce visibility, isolated snow showers are possible (additional 5 cm). In afternoon, visibility will improve, sunshine is possible, the NW/NE winds will be moderate. At 2000 m: -7 degrees.

## Outlook

Avalanche danger levels are not expected to change significantly.

### Avalanche problems



New snow



Wind drifted snow



Persistent weak layer



Wet snow



Gliding snow



Cornices



no distinct

### Danger ratings



1

low



2

moderate



3

considerable



4

high



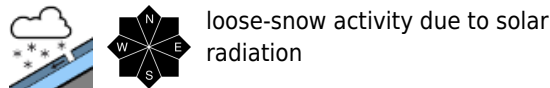
5

very high

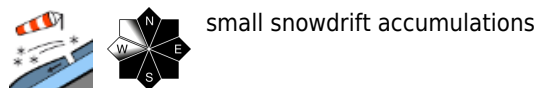
### Expositions



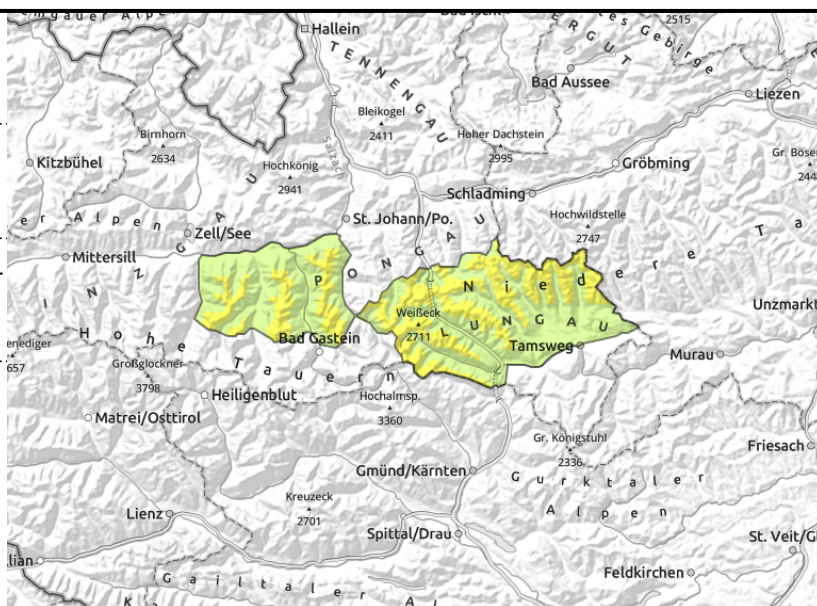
**Goldberggruppe Nord, Ankogelgruppe, Muhr, Niedere Tauern Süd, Niedere Tauern Alpenhauptkamm**



loose-snow activity due to solar radiation



small snowdrift accumulations



**Loose-snow activity and blanketed snowdrift masses**

Avalanche danger is MODERATE.

Due to solar radiation and diffuse light, small loose-snow avalanches can release naturally in extremely steep (>40°) terrain. In places, small loose-snow avalanches can be triggered by 1 person. Blanketed snowdrifts at high and high-alpine altitudes can trigger a small slab by one person in isolated cases. Most danger zones occur in steep terrain (>30°) on N/E/SW facing slopes behind discontinuities and in wind-loaded gullies and bowls. Frequency of avalanche prone locations increases with ascending altitude. Snowdrift masses can be covered, thus, difficult to recognize. In isolated cases, glide-snow avalanches, medium-sized, can release naturally.

**Snowpack structure**

Atop a thoroughly moist snowpack, 40-60 cm of cold snow lies deposited at high altitudes. In transitions from the old snowpack to the fresh snow masses, bonding is good, but poor in the upper layers of the fresh snow, due to wind impact on Saturday, but the drifts will quickly consolidate. Reserves of cold in the old snow are limited to shady slopes above 2600 m.

**Weather**

On Saturday night a bit of snowfall is possible (5 cm), the NW winds will slacken off noticeably. On Sunday, clouds will initially reduce visibility, isolated snow showers are possible (additional 5 cm). In afternoon, visibility will improve, sunshine is possible, the NW/NE winds will be moderate. At 2000 m: -7 degrees; at 3000 m: -14 degrees.

**Outlook**

Avalanche danger levels are not expected to change significantly.

**Avalanche problems**



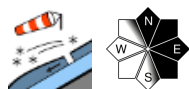
**Danger ratings**



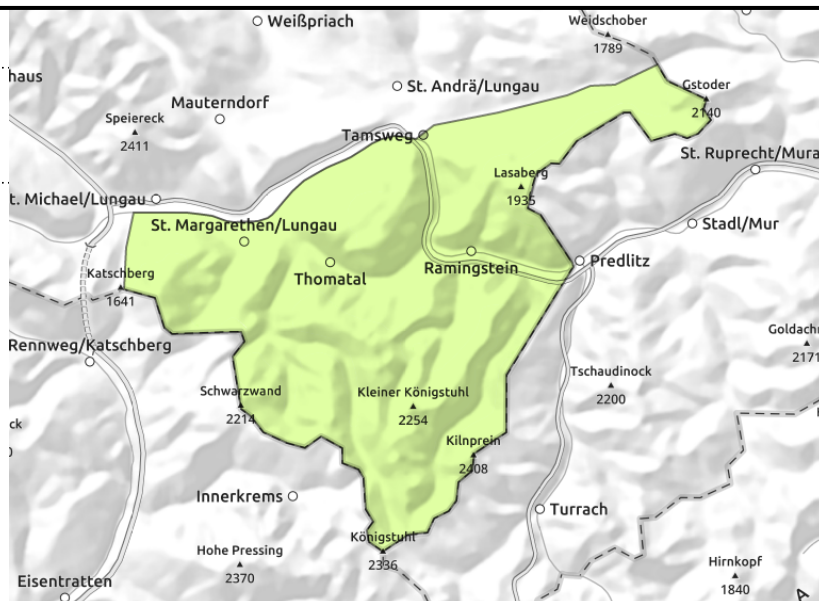
**Expositions**



## Nockberge



isolated, thin



## Favorable conditions

Avalanche danger is low.

Fresh snowdrift accumulations in high altitude ridgeline terrain are small, can trigger a small slab. Danger of falling outweighs that of snow masses.

## Snowpack structure

Atop bare ground or a thoroughly wet snowpack, 20 cm of fresh snow lie deposited from Tuesday, settled and well bonded.

## Weather

On Sunday, clouds will initially reduce visibility, isolated snow showers are possible (additional 5 cm). In afternoon, visibility will improve, sunshine is possible, the NW/NE winds will be moderate. At 2000 m: -7 degrees.

## Outlook

Avalanche danger levels are not expected to change significantly.

### Avalanche problems



### Danger ratings



### Expositions



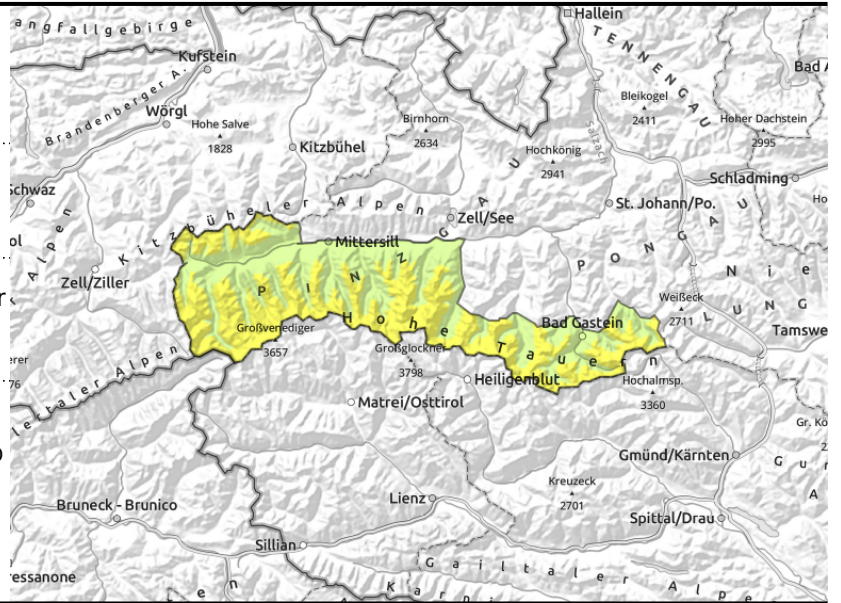
**Großvenedigergruppe Nord, Großvenedigergruppe Alpenhauptkamm, Glocknergruppe Nord, Glocknergruppe Alpenhauptkamm, Goldberggruppe Alpenhauptkamm, Oberpinzgauer Grasberge**



loose-snow activity due to solar radiation



blanketed snowdrifts, behind discontinuities, in gullies, steep bowls



## Loose-snow activity and blanketed snowdrift masses

Avalanche danger is MODERATE.

Due to solar radiation and diffuse light, small loose-snow avalanches can release naturally in extremely steep ( $>40^\circ$ ) terrain. In places, small loose-snow avalanches can be triggered by 1 person. Blanketed snowdrifts at high and high-alpine altitudes can trigger a small slab by one person in isolated cases. Most danger zones occur in steep terrain ( $>30^\circ$ ) on N/E/SW facing slopes behind discontinuities and in wind-loaded gullies and bowls. Frequency of avalanche prone locations increases with ascending altitude. Snowdrift masses can be covered, thus, difficult to recognize. In isolated cases, glide-snow avalanches, medium-sized, can release naturally.

### Snowpack structure

Atop a thoroughly moist snowpack, 40-60 cm of cold snow lies deposited at high altitudes. In transitions from the old snowpack to the fresh snow masses, bonding is good, but poor in the upper layers of the fresh snow, due to wind impact on Saturday, but the drifts will quickly consolidate. Reserves of cold in the old snow are limited to shady slopes above 2600 m.

### Weather

On Saturday night a bit of snowfall is possible (5 cm), the NW winds will slacken off noticeably. On Sunday, clouds will initially reduce visibility, isolated snow showers are possible (additional 5 cm). In afternoon, visibility will improve, sunshine is possible, the NW/NE winds will be moderate. At 2000 m: -7 degrees; at 3000 m: -14 degrees.

### Outlook

Avalanche danger levels are not expected to change significantly.

#### Avalanche problems



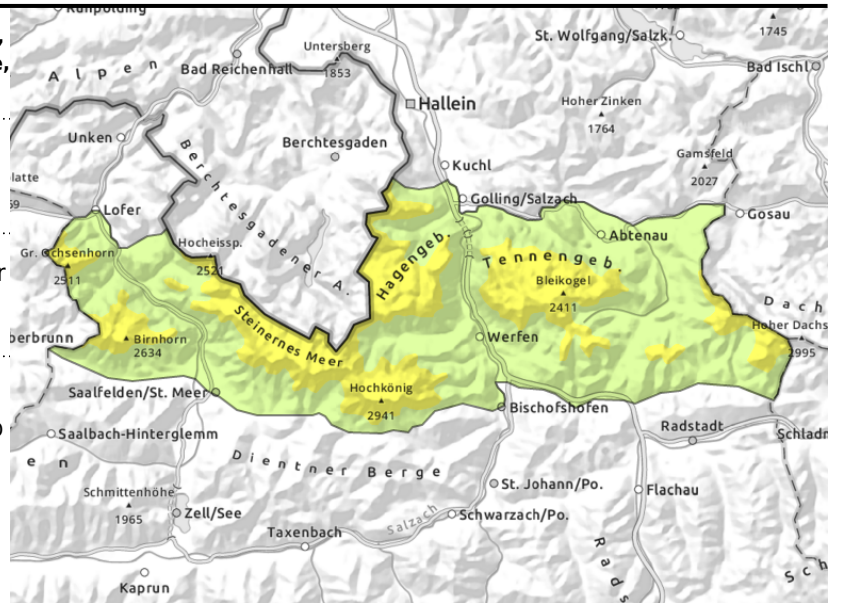
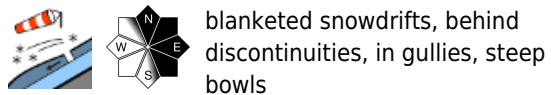
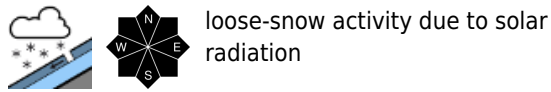
#### Danger ratings



#### Expositions



**Loferer und Leoganger Steinberge, Steinernes Meer, Hochkönig, Hagengebirge, Göllstock, Tennengebirge, Gosaukamm**



**Loose-snow activity and blanketed snowdrift masses**

Avalanche danger is MODERATE.

Due to solar radiation and diffuse light, small loose-snow avalanches can release naturally in extremely steep (>40°) terrain. In places, small loose-snow avalanches can be triggered by 1 person. Blanketed snowdrifts at high and high-alpine altitudes can trigger a small slab by one person in isolated cases. Most danger zones occur in steep terrain (>30°) on N/E/SW facing slopes behind discontinuities and in wind-loaded gullies and bowls. Frequency of avalanche prone locations increases with ascending altitude. Snowdrift masses can be covered, thus, difficult to recognize. In isolated cases, glide-snow avalanches, medium-sized, can release naturally.

**Snowpack structure**

Atop a thoroughly moist snowpack, 40-60 cm of cold snow lies deposited at high altitudes. In transitions from the old snowpack to the fresh snow masses, bonding is good, but poor in the upper layers of the fresh snow, due to wind impact on Saturday, but the drifts will quickly consolidate. Reserves of cold in the old snow are limited to shady slopes above 2600 m.

**Weather**

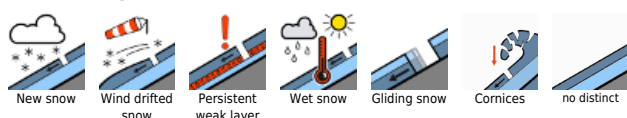
On Saturday night a bit of snowfall is possible (5 cm), the NW winds will slacken off noticeably. On Sunday, clouds will initially reduce visibility, isolated snow showers are possible (additional 5 cm). In afternoon, visibility will improve, sunshine is possible, the NW/NE winds will be moderate. At 2000 m: -7 degrees; at 3000 m: -14 degrees.

**Outlook**

Avalanche danger levels are not expected to change significantly.

Translated by Jeffrey McCabe, [www.creativtrans.com](http://www.creativtrans.com)

**Avalanche problems**



**Danger ratings**



**Expositions**

