

## Wintery! Moderate snowdrift problem above 2200m

1	Kitzbüheler Alpen, Glemmtal, Dientner Grasberge, Pongauer Grasberge, Chiemgauer Alpen, Heutal, Reiteralpe, Oberpinzgauer Grasberge, Niedere Tauern Nord	
2 1	2200 m Glocknergruppe Nord, Goldberggruppe Nord, Goldberggruppe Alpenhauptkamm, Glocknergruppe Alpenhauptkamm, Großvenedigergruppe Alpenhauptkamm, Großvenedigergruppe Nord, Loferer und Leoganger Steinberge, Steinernes Meer, Hochkönig, Hagengebirge, Göllstock, Tennengebirge, Gosaukamm, Ankogelgruppe, Muhr, Niedere Tauern Süd, Niedere Tauern Alpenhauptkamm	
1	Nockberge	

### Avalanche problems



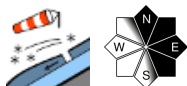
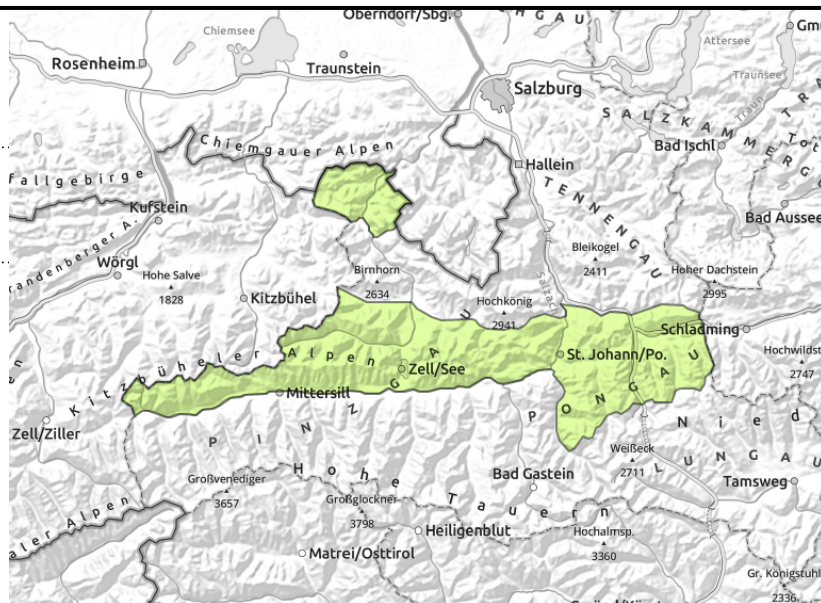
### Danger ratings



### Expositions



**Kitzbüheler Alpen, Glemmtal, Dientner Grasberge,  
 Pongauer Grasberge, Chiemgauer Alpen, Heutal,  
 Reiteralpe, Oberpinzgauer Grasberge, Niedere  
 Tauern Nord**



in isolated cases, small

## Favorable conditions

Avalanche danger is low.

Fresh snowdrift accumulations in high altitude ridgeline terrain are small, can trigger a small slab.

Danger of falling outweighs that of snow masses.

Glide-snow avalanches can release naturally in isolated cases, releases usually small.

## Snowpack structure

Atop bare ground or a thoroughly wet snowpack, 5-20 cm of fresh snow lie deposited.

## Weather

Final showers will taper off and end during the night, after midnight the clouds will disperse, winds will remain predominantly light.

On Friday, bright intervals to start with, clouds becoming heavier later on, the peaks disappearing in fog. Dry until afternoon, then snowfall starting in the north (5 cm), intensifying westerly winds. At 2000 m: rising from -8 to -3 degrees.

## Outlook

Avalanche danger levels are not expected to change significantly.

### Avalanche problems



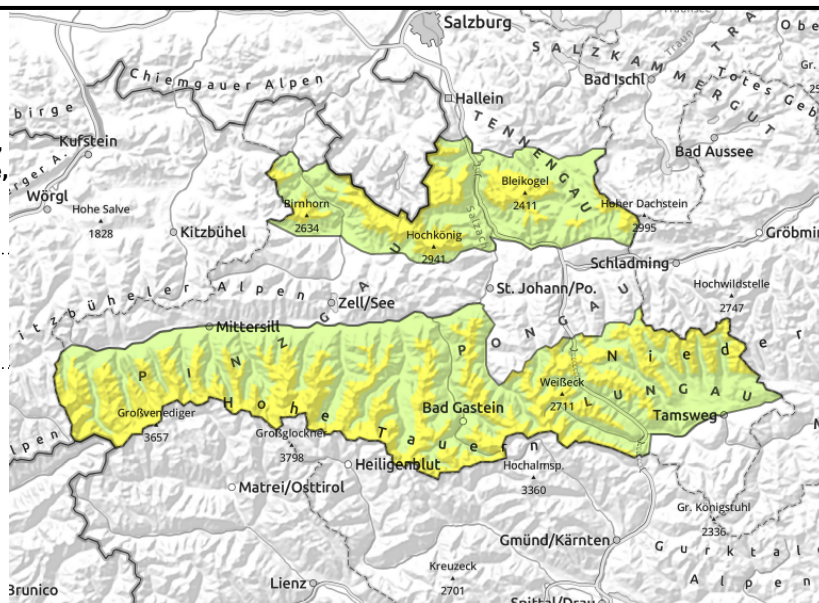
### Danger ratings



### Expositions



**Glocknergruppe Nord, Goldberggruppe Nord, Goldberggruppe Alpenhauptkamm, Glocknergruppe Alpenhauptkamm, Großvenedigergruppe Alpenhauptkamm, Großvenedigergruppe Nord, Loferer und Leoganger Steinberge, Steinernes Meer, Hochkönig, Hagengebirge, Göllstock, Tennengebirge, Gosaukamm, Ankogelgruppe, Muhr, Niedere Tauern Süd, Niedere Tauern Alpenhauptkamm**



freshly generated ridgeline snowdrifts

## Beware fresh snowdrifts

Avalanche danger is MODERATE.

Fresh ridgeline snowdrifts in high and high-alpine terrain can trigger a medium slab in isolated cases, most danger zones occur on N/E/S facing slopes and in wind-loaded gullies and bowls.

In case of solar radiation, small loose-snow avalanches can release in extremely steep terrain.

Glide-snow avalanches can still release naturally.

## Snowpack structure

Atop a thoroughly moist snowpack, 20-30 cm of cold snow lie deposited at high altitudes. Reserves of cold in the old snow are limited to shady slopes above 2600 m. The fresh snow is bonding well. Brisk W/NW winds are generating fresh snowdrift accumulations, weak layer for a slab is the fresh snow beneath them or in layers of the fresh snow itself.

## Weather

Final showers will taper off and end during the night, after midnight the clouds will disperse, winds will remain predominantly light.

On Friday, bright intervals to start with, clouds becoming heavier later on, the peaks disappearing in fog. Dry until afternoon, then snowfall starting in the north (5 cm), intensifying westerly winds. At 2000 m: rising from -8 to -3 degrees.

## Outlook

Avalanche danger levels will increase over the next few days, depending on amounts of fresh snowfall.

### Avalanche problems



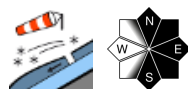
### Danger ratings



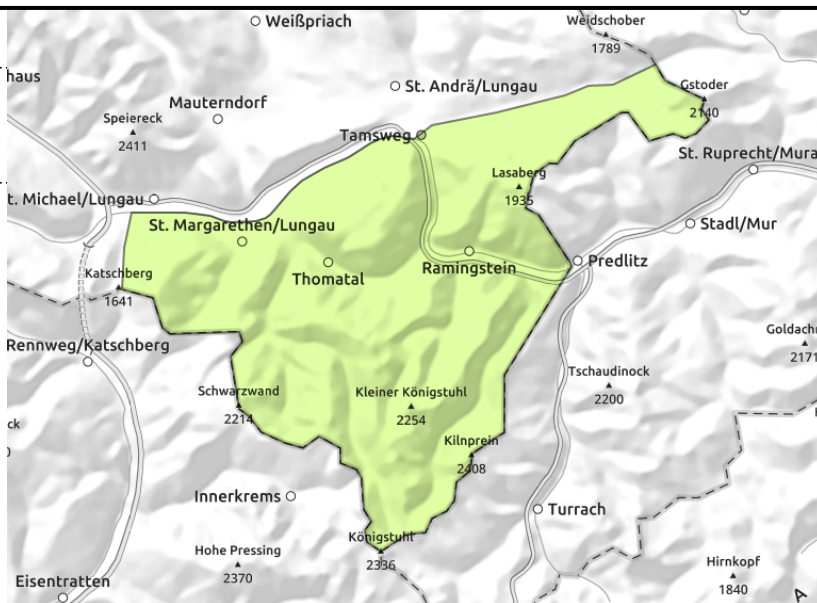
### Expositions



**Nockberge**



seldom, thin



**Favorable conditions**

Avalanche danger is low.

Fresh snowdrift accumulations in high altitude ridgeline terrain are small, can trigger a small slab.

Danger of falling outweighs that of snow masses.

Very isolated glide-snow avalanches can release naturally in isolated cases, releases usually small.

**Snowpack structure**

Atop bare ground or a thoroughly wet snowpack, 20 cm of fresh snow lie deposited, settled and well bonded.

**Weather**

Final showers will taper off and end during the night, after midnight the clouds will disperse, winds will remain predominantly light.

On Friday, good visibility despite clouds moving through. Winds will remain light.

**Outlook**

Avalanche danger levels are not expected to change significantly.

Translated by Jeffrey McCabe, [www.creativtrans.com](http://www.creativtrans.com)

**Avalanche problems**



**Danger ratings**



**Expositions**

