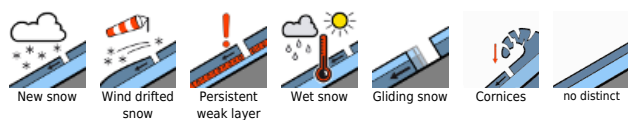


Wintery! Moderate snowdrift problem above 2200m

	Kitzbüheler Alpen, Glemmtal, Dientner Grasberge, Pongauer Grasberge, Chiemgauer Alpen, Heutal, Reiteralpe, Oberpinzgauer Grasberge, Niedere Tauern Nord	
	2200 m Loferer und Leoganger Steinberge, Steinernes Meer, Hochkönig, Hagengebirge, Göllstock, Tennengebirge, Gosaukamm, Niedere Tauern Alpenhauptkamm, Ankogelgruppe, Muhr, Niedere Tauern Süd, Nockberge	
	2200 m Glocknergruppe Nord, Goldberggruppe Nord, Goldberggruppe Alpenhauptkamm, Glocknergruppe Alpenhauptkamm, Großvenedigergruppe Alpenhauptkamm, Großvenedigergruppe Nord	

Avalanche problems



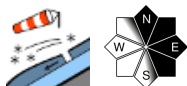
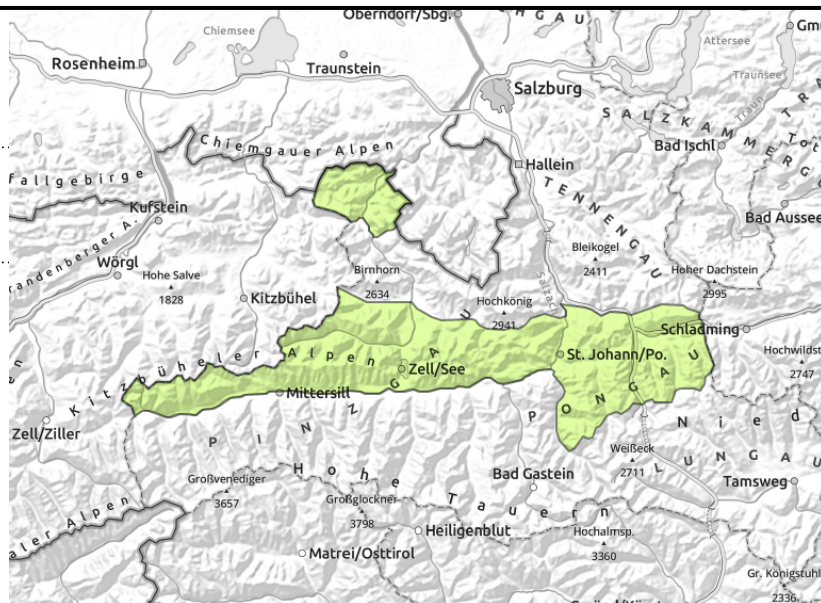
Danger ratings



Expositions



Kitzbüheler Alpen, Glemmtal, Dientner Grasberge, Pongauer Grasberge, Chiemgauer Alpen, Heutal, Reiteralpe, Oberpinzgauer Grasberge, Niedere Tauern Nord



in isolated cases, small

Mostly poor visibility

Avalanche danger is low.

Fresh snowdrift accumulations in high altitude ridgeline terrain are small, can trigger a small slab.

Danger of falling outweighs that of snow masses.

Glide-snow avalanches can release naturally in isolated cases, releases usually small.

Snowpack structure

Atop bare ground or a thoroughly wet snowpack with melt-freeze crust there are 5-20 cm of fresh snow deposited.

Weather

Nighttime skies are overcast, isolated snow showers will pass through (fresh snow: 5 cm). Winds will be light. On Thursday, heavy cloud cover, snow showers possible all day long, visibility often reduced.

All in all, 10 cm of fresh snow anticipated, with regional bright intervals, NW winds reaching 30-40 km/hr. At 2000 m: -7 degrees.

Outlook

Avalanche danger levels are not expected to change significantly.

Avalanche problems



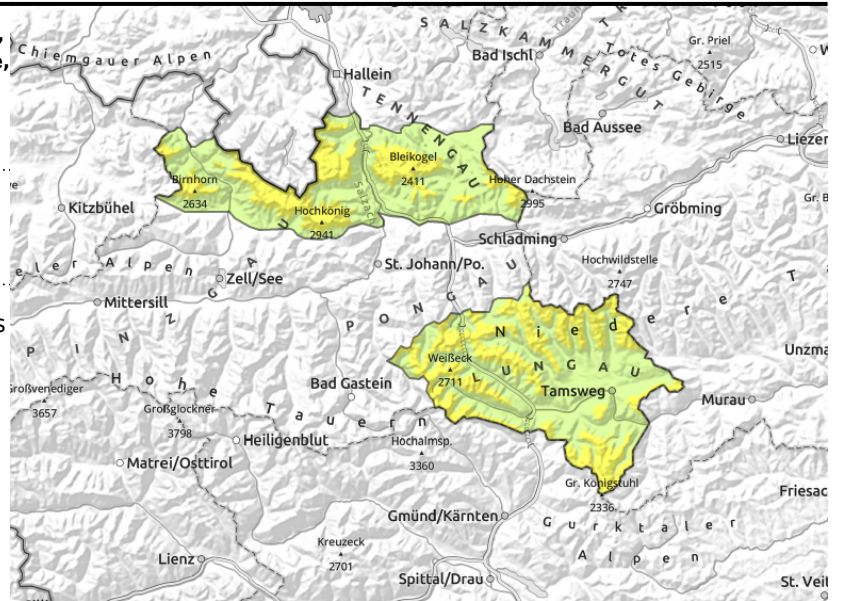
Danger ratings



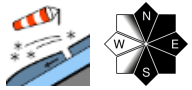
Expositions



Loferer und Leoganger Steinberge, Steinernes Meer, Hochkönig, Hagengebirge, Göllstock, Tennengebirge, Gosaukamm, Niedere Tauern Alpenhauptkamm, Ankogelgruppe, Muhr, Niedere Tauern Süd, Nockberge



in high terrain, small snowdrifts



Mostly poor visibility

Avalanche danger above 2200 m is MODERATE, below that altitude danger is low. Fresh ridgeline snowdrifts in high and high-alpine terrain can trigger a medium slab in isolated cases, most danger zones occur on N/E/S facing slopes and in wind-loaded gullies and bowls. Glide-snow avalanches can still release naturally. In starting zones which have not yet discharged they can become medium-sized. Most dangerous are the starting zones on NW/N/E facing slopes. In case of solar radiation, small loose-snow avalanches can trigger in extremely steep terrain.

Snowpack structure

Cold fresh snowfall (20 cm at high altitudes) lies deposited atop a moist snowpack. Reserves of cold are reduced to shady slopes above 2600 m. Fresh snow is bonding well with the base. Brisk W/NW winds are generating fresh snowdrift accumulations, the fresh snow beneath these can be a weak layer for a slab.

Weather

Nighttime skies are overcast, isolated snow showers will pass through (fresh snow: 5 cm). Winds will be light. On Thursday, heavy cloud cover, snow showers possible all day long, visibility often reduced. All in all, 10 cm of fresh snow anticipated, with regional bright intervals, dry in the Nockberge, NW winds reaching 50 km/hr. At 2000 m: -7 degrees; at 3000 m: -13 degrees.

Outlook

Avalanche danger levels are not expected to change significantly.

Avalanche problems



Danger ratings



Expositions



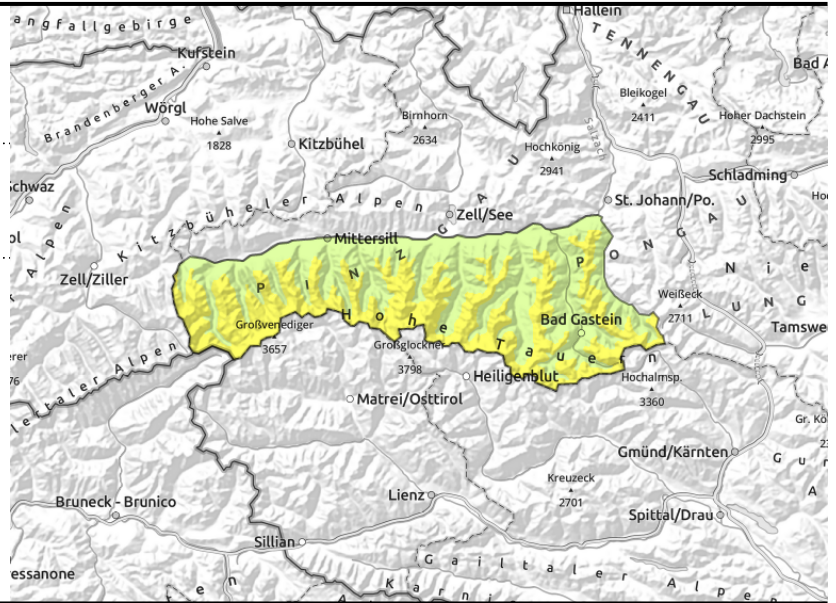
**Glocknergruppe Nord, Goldberggruppe Nord,
Goldberggruppe Alpenhauptkamm, Glocknergruppe
Alpenhauptkamm, Großvenedigergruppe
Alpenhauptkamm, Großvenedigergruppe Nord**



2200 m



fresh ridgeline drifts



Beware freshly generated snowdrifts

Avalanche danger is MODERATE.

Fresh ridgeline snowdrifts in high and high-alpine terrain can trigger a medium slab in isolated cases, most danger zones occur on N/E/S facing slopes and in wind-loaded gullies and bowls. Frequency of danger zones increases with ascending altitude.

Glide-snow avalanches can still release naturally.

In case of solar radiation, small loose-snow avalanches can release in extremely steep terrain (40°+).

Snowpack structure

Up to 20-30 cm of fresh snow has fallen on bare ground or a moist snowpack, reserves of cold are reduced to shady slopes above 2600 m. The fresh snow is bonding well. Stormy W/NW winds are generating small drifts. Stormy W/NW winds are generating fresh drifts, these may contain weak layers.

Weather

Nighttime skies are overcast, isolated snow showers will pass through (fresh snow: 5 cm). Winds will be light. On Thursday, heavy cloud cover, snow showers possible all day long, visibility often reduced. All in all, 10 cm of fresh snow anticipated, with regional bright intervals, NW winds reaching 30-40 km/hr. At 2000 m: -7 degrees; at 3000 m: -13 degrees.

Outlook

Avalanche danger levels are not expected to change significantly.

Translated by Jeffrey McCabe, www.creativtrans.com

Avalanche problems



Danger ratings



Expositions

