

## Wintery! Snowfall and increasingly stormy winds.

1	Kitzbüheler Alpen, Glemmtal, Dientner Grasberge, Pongauer Grasberge, Chiemgauer Alpen, Heutal, Reiteralpe, Oberpinzgauer Grasberge	
2 1	2000 m Loferer und Leoganger Steinberge, Steinernes Meer, Hochkönig, Hagengebirge, Göllstock, Tennengebirge, Gosaukamm, Niedere Tauern Nord, Niedere Tauern Alpenhauptkamm, Ankogelgruppe, Muhr, Niedere Tauern Süd, Nockberge	
2	Glocknergruppe Nord, Goldberggruppe Nord, Goldberggruppe Alpenhauptkamm, Glocknergruppe Alpenhauptkamm, Großvenedigergruppe Alpenhauptkamm, Großvenedigergruppe Nord	

### Avalanche problems



### Danger ratings



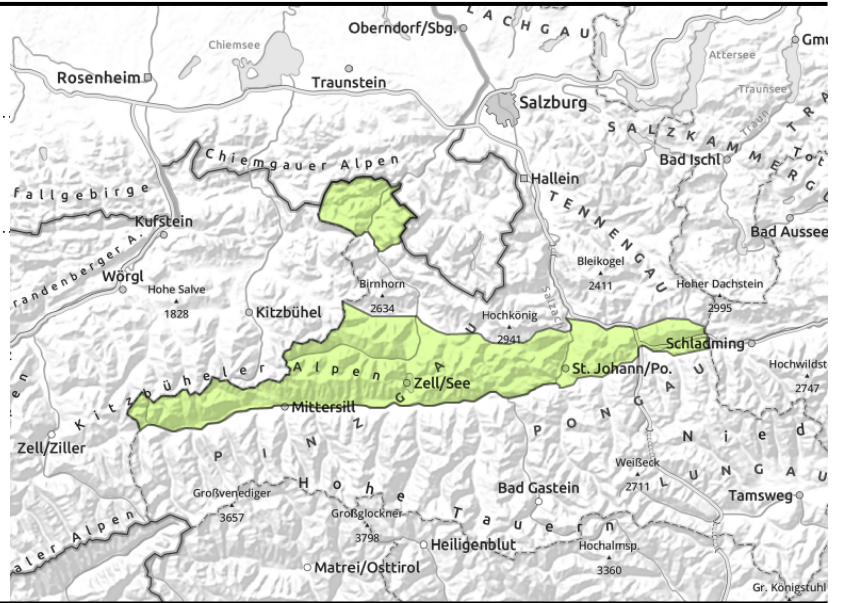
### Expositions



**Kitzbüheler Alpen, Glemmtal, Dientner Grasberge, Pongauer Grasberge, Chiemgauer Alpen, Heutal, Reiteralpe, Oberpinzgauer Grasberge**



seldom, in extremely steep terrain



## Few danger zones for glide-snow avalanches

Avalanche danger is low, mostly from glide-snow avalanches which can release at any time of day or night but remain usually small.

### Snowpack structure

The slopes are becoming bare of snow at intermediate altitudes. The fresh snow will fall on bare ground or atop a moist snowpack at summit levels and bond well. It will be transported by W/NW winds, but a weak layer is lacking for the formation of a slab. On steep grass-covered slopes the entire snowpack can glide over smooth ground.

### Weather

Rainfall/snowfall will be frequent at night, also hefty thunderstorms, the snowfall level dropping from 2300 to 1400 m, NW winds reaching 50 km/hr. At high altitudes of the Northern Alps, 5-20 cm of fresh snow anticipated, in the Tauern 5-15 cm, in the Nockberge up to 10 cm.

On Tuesday, clouds and some snowfall, brighter and drier in afternoon. In the Lungau Nockberge the snowfall will persist for longer. Snowfall level at 1000-1400. At 2000 m: -4 degrees; at 3000 m: -10 degrees. The NW winds will reach 90 km/hr in exposed terrain of the Northern Alps, in the Tauern 70 km/hr.

### Outlook

Further snowfall on Wednesday will intensify the snowdrift problem. A weak layer could form at the transition from fresh to old snow (cold-on-warm). The gliding snow problem persists.

#### Avalanche problems



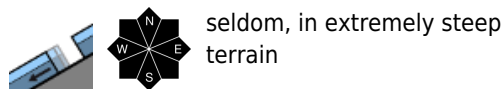
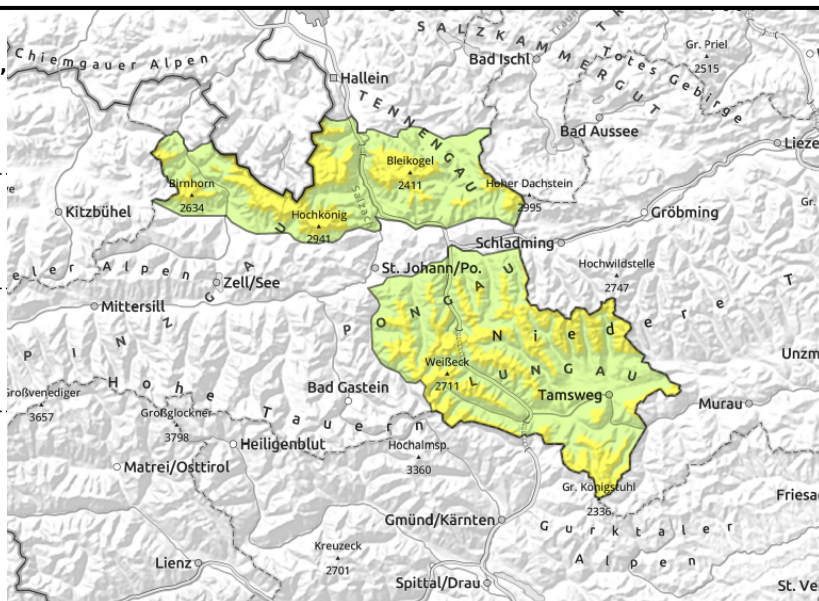
#### Danger ratings



#### Expositions



**Loferer und Leoganger Steinberge, Steinernes Meer, Hochkönig, Hagengebirge, Göllstock, Tennengebirge, Gosaukamm, Niedere Tauern Nord, Niedere Tauern Alpenhauptkamm, Ankogelgruppe, Muhr, Niedere Tauern Süd, Nockberge**



seldom, in extremely steep terrain



in high and high-alpine terrain, small snowdrifts

## Medium-sized glide-snow avalanches possible

Avalanche danger below 2000 m is low, above that altitude danger is MODERATE, mostly from glide-snow avalanches which can release naturally at any time. In high zones which have not yet discharged, medium sized. Most dangerous are the starting zones on NW/N/E facing slopes. Small drifts at high altitudes present a higher danger of falling.

### Snowpack structure

The snowpack is 0-degree isotherm up to summit levels and thoroughly wet down to the ground. On sunny slopes the ground is bare up to intermediate altitudes, the reserves of cold are used up except for shady slopes above 2600 m. The fresh snow is bonding well. Stormy W/NW winds are generating small drifts. Reinforced gliding of the entire snowpack is being observed on smooth slopes.

### Weather

Rainfall/snowfall will be frequent at night, also hefty thunderstorms, the snowfall level dropping from 2300 to 1400 m, NW winds reaching 50 km/hr. At high altitudes of the Northern Alps, 5-20 cm of fresh snow anticipated, in the Tauern 5-15 cm, in the Nockberge up to 10 cm.

On Tuesday, clouds and some snowfall, brighter and drier in afternoon. In the Lungau Nockberge the snowfall will persist for longer. Snowfall level at 1000-1400. At 2000 m: -4 degrees; at 3000 m: -10 degrees. The NW winds will reach 90 km/hr in exposed terrain of the Northern Alps, in the Tauern 70 km/hr.

### Outlook

Further snowfall on Wednesday will intensify the snowdrift problem. A weak layer could form at the transition from fresh to old snow (cold-on-warm). The gliding snow problem persists.

#### Avalanche problems



#### Danger ratings



#### Expositions



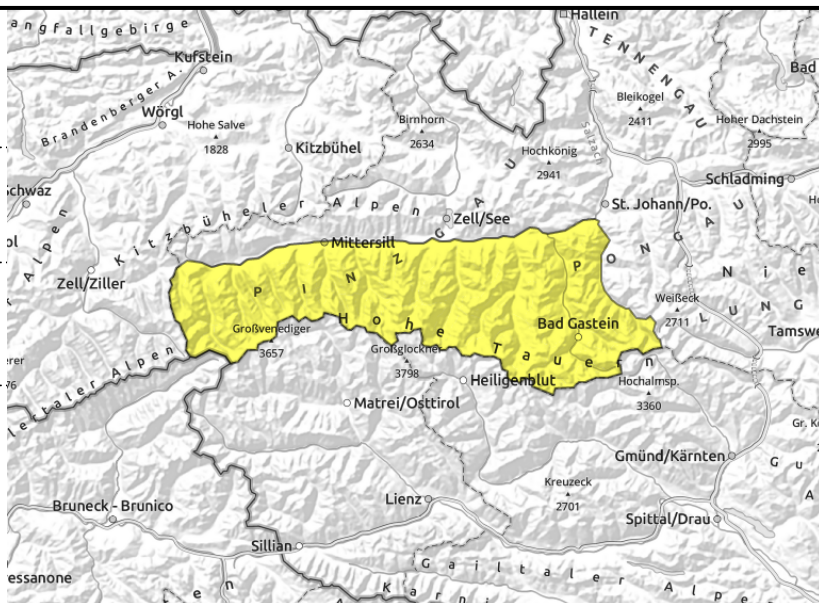
**Glocknergruppe Nord, Goldberggruppe Nord,  
 Goldberggruppe Alpenhauptkamm, Glocknergruppe  
 Alpenhauptkamm, Großvenedigergruppe  
 Alpenhauptkamm, Großvenedigergruppe Nord**



possible at any time of day or night, below 2600 m



small, thin snowdrifts at high-alpine altitudes



## Glide-snow avalanches still possible

Avalanche danger is MODERATE, mostly from glide-snow avalanches which can release at any time, medium in high zones which have not yet discharged, or larger, and can plummet down to slopes which are bare of snow. Most dangerous are NW/N/E facing starting zones. High altitude drifts mostly dangerous for forcing a fall.

### Snowpack structure

The snowpack is 0-degree isotherm up to summit levels and thoroughly wet down to the ground. On sunny slopes the ground is bare up to intermediate altitudes, the reserves of cold are used up except for shady slopes above 2600 m. The fresh snow is bonding well. Stormy W/NW winds are generating small drifts. Reinforced gliding of the entire snowpack is being observed on smooth slopes.

### Weather

Rainfall/snowfall will be frequent at night, also hefty thunderstorms, the snowfall level dropping from 2300 to 1400 m, NW winds reaching 50 km/hr. At high altitudes 5-15 cm of fresh snow anticipated. On Tuesday, clouds and some snowfall, brighter and drier in afternoon. Snowfall level at 1000-1400. At 2000 m: -4 degrees; at 3000 m: -10 degrees. The NW winds will reach 90 km/hr in exposed terrain 70 km/hr.

### Outlook

Further snowfall on Wednesday will intensify the snowdrift problem. A weak layer could form at the transition from fresh to old snow (cold-on-warm). The gliding snow problem persists.

Translated by Jeffrey McCabe, [www.creativtrans.com](http://www.creativtrans.com)

#### Avalanche problems



#### Danger ratings



#### Expositions

