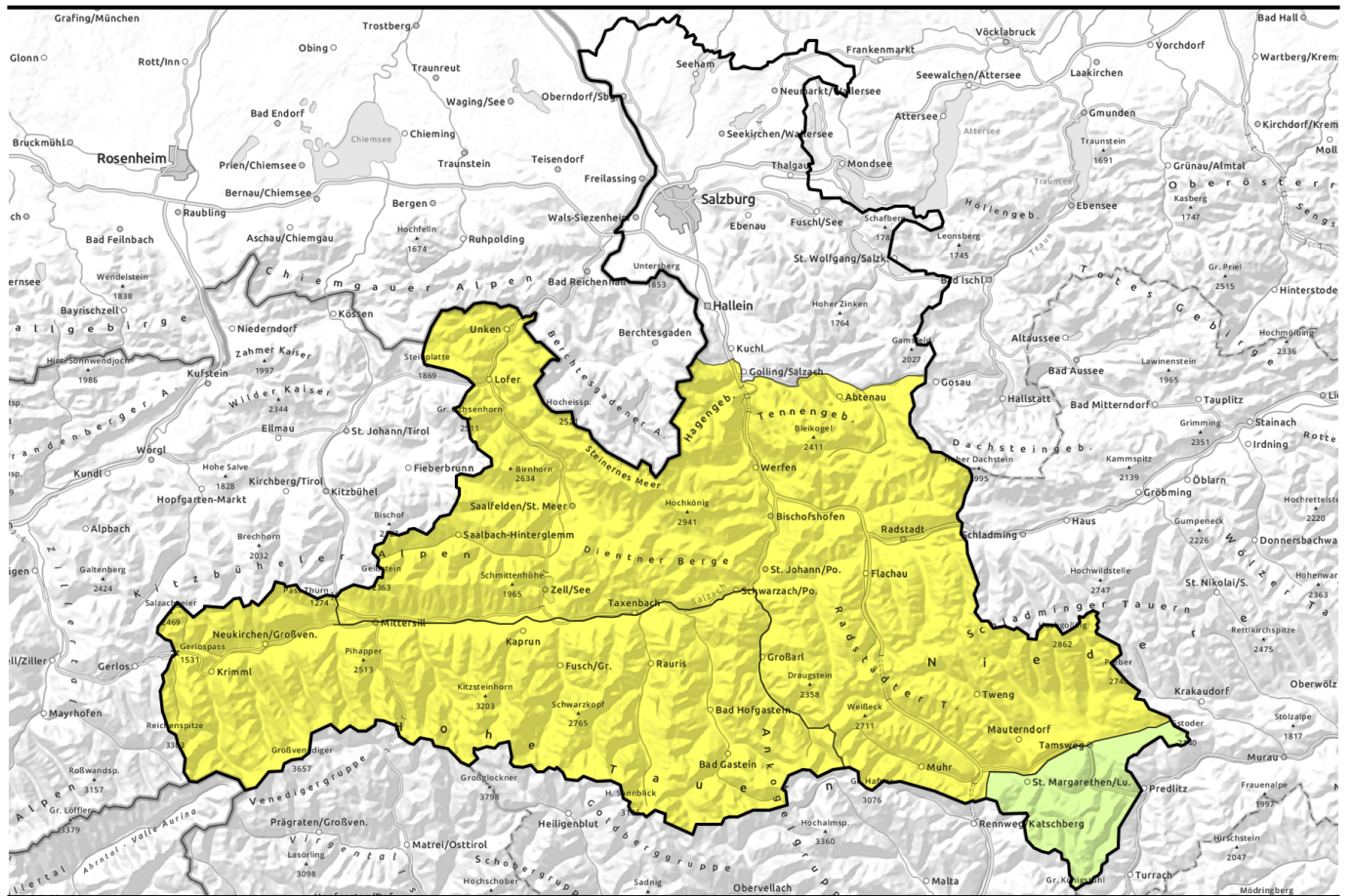


morning



Rapid daytime cycle of naturally triggered avalanches

2	Chiemgauer Alpen, Heutal, Reiteralpe, Kitzbüheler Alpen, Glemmtal, Dientner Grasberge, Pongauer Grasberge, Niedere Tauern Nord, Loferer und Leoganger Steinberge, Steinernes Meer, Hochkönig, Hagengebirge, Göllstock, Tennengebirge, Gosaukamm, Niedere Tauern Alpenhauptkamm, Niedere Tauern Süd, Ankogelgruppe, Muhr	
1	Nockberge	
2	Großvenedigergruppe Nord, Großvenedigergruppe Alpenhauptkamm, Glocknergruppe Nord, Glocknergruppe Alpenhauptkamm, Goldberggruppe Alpenhauptkamm, Goldberggruppe Nord, Oberpinzgauer Grasberge	

Avalanche problems



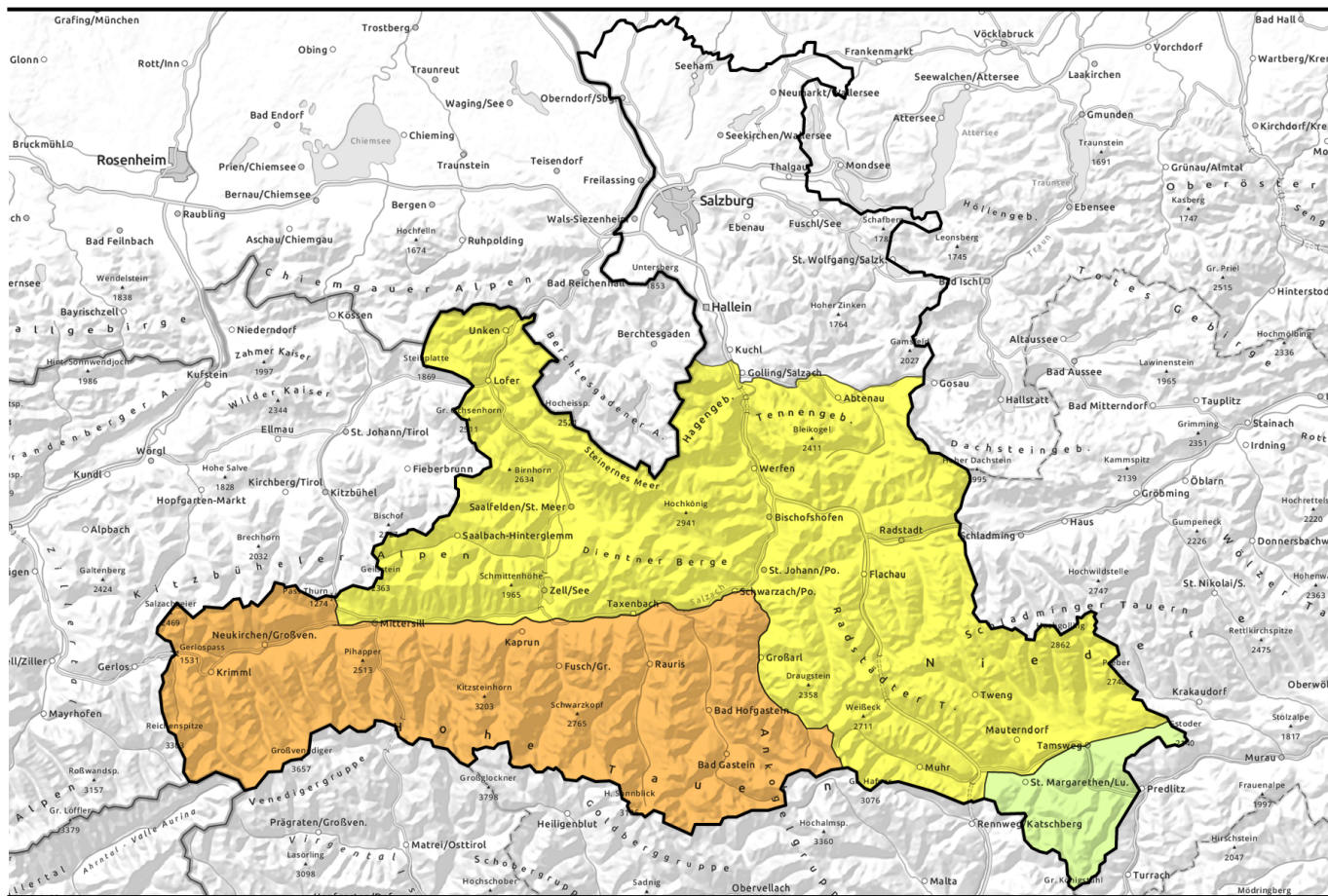
Danger ratings




Expositions





afternoon





Rasch einsetzender Tagesgang spontaner Lawinen

- 


Chiemgauer Alpen, Heutal, Reiteralpe, Kitzbüheler Alpen, Glemmtal, Dientner Grasberge, Pongauer Grasberge, Niedere Tauern Nord, Loferer und Leoganger Steinberge, Steinernes Meer, Hochkönig, Hagengebirge, Göllstock, Tennengebirge, Gosaukamm, Niedere Tauern Alpenhauptkamm, Niedere Tauern Süd, Ankogelgruppe, Muhr


- 

Nockberge


- 

Großvenedigergruppe Nord, Großvenedigergruppe Alpenhauptkamm, Glocknergruppe Nord, Glocknergruppe Alpenhauptkamm, Goldberggruppe Alpenhauptkamm, Goldberggruppe Nord, Oberpinzgauer Grasberge



Avalanche problems



Danger ratings

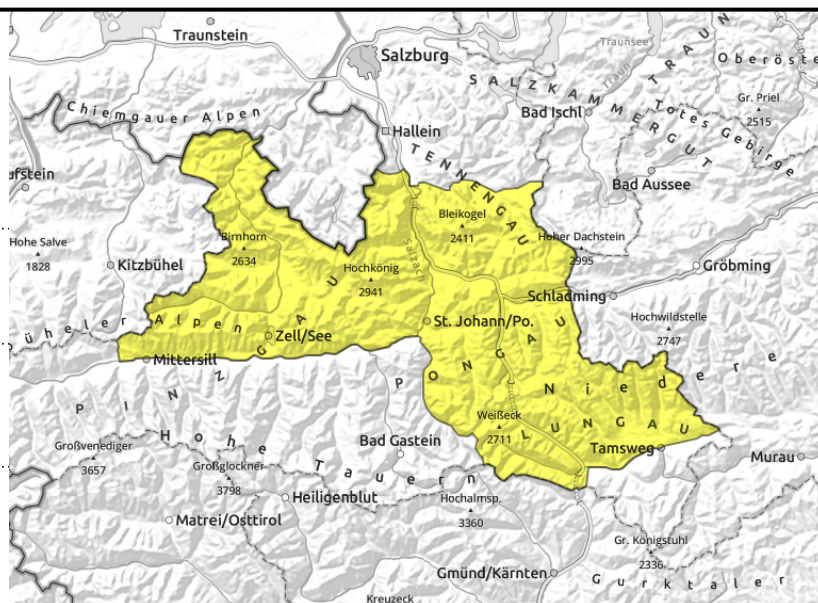


Expositions



morning

Chiemgauer Alpen, Heutal, Reiteralpe, Kitzbüheler Alpen, Glemmtal, Dientner Grasberge, Pongauer Grasberge, Niedere Tauern Nord, Loferer und Leoganger Steinberge, Steinernes Meer, Hochkönig, Hagengebirge, Gölstock, Tennengebirge, Gosaukamm, Niedere Tauern Alpenhauptkamm, Niedere Tauern Süd, Ankogelgruppe, Muhr



possible at any time of day or night



daily danger cycle of naturally triggered avalanche activity

Gliding snow activity increasing

Avalanche danger is MODERATE. Due to rising temperatures and lots of solar radiation, glide-snow avalanches continue to be the main danger: in all aspects at any time of day or night, medium-sized when triggering from terrain which has not yet discharged, plummeting down to greenlands, esp. in starting zones in NW/N/E facing terrain. Avoid zones below glide-cracks.

As the day progresses, likelihood of small loose-snow slides will increase on sunny slopes and in rough and rocky terrain in all aspects, esp. on very steep W/N/E facing slopes above 2200m.

Snowpack structure

The bit of fresh snow from Wednesday has bonded and consolidated, became moistened on Thursday in all aspects. Due to nocturnal outgoing radiation, a thin melt-freeze crust forms, softening quickly the next day. Beneath it the snowpack on W/N/E facing slopes is often isotherm and moistened down to the ground. On sunny slopes the fresh snow has already melted, the slopes are becoming bare again.

In steep grass-covered terrain which has not yet discharged, glide-snow avalanches can release and plummet down to bare slopes.

Weather

Scattered thin cirrus clouds during the night, light to moderate NW winds.

On Saturday, sunshine, thin cirrus clouds, light-to-moderate W/NW winds. At 2000 m: 7-12 degrees; at 3000 m: 3 degrees. Also on Sunday, following a night of scattered clouds, initially sunny, heavier clouds moving in later with intensifying winds.

Outlook

Avalanche danger levels are not expected to change significantly. Daytime cycle of avalanche activity. Beware gliding snow.

Avalanche problems



New snow



Wind drifted snow



Persistent weak layer



Wet snow



Gliding snow



Cornices



no distinct

Danger ratings



1

low



2

moderate



3

considerable



4

high



5

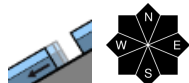
very high

Expositions

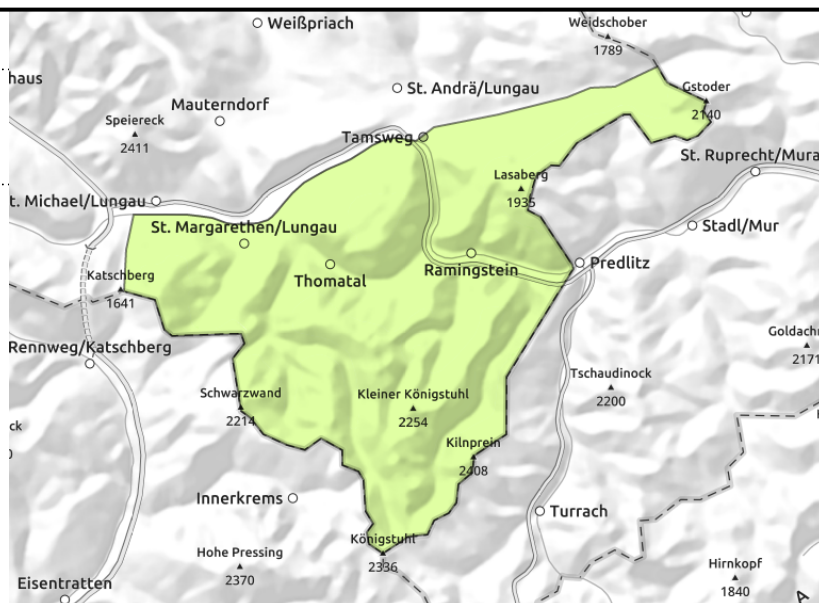


morning

Nockberge



in isolated cases only



Glide-snow/wet-snow avalanches possible only in few spots

Avalanche danger is low. Naturally triggered glide-snow avalanches are possible in isolated cases in terrain which has not yet discharged in all aspects, medium releases cannot be ruled out.

Snowpack structure

At night, a melt-freeze crust forms, swiftly melting in the daytime. At least on north facing slopes, there is potential for medium-sized glide-snow avalanches. On sunny slopes there is too little snow on the ground.

Weather

Scattered thin cirrus clouds during the night, light to moderate NW winds.

On Saturday, sunshine, thin cirrus clouds, light-to-moderate W/NW winds. At 2000 m: 7-12 degrees; at 3000 m: 3 degrees. Also on Sunday, following a night of scattered clouds, initially sunny, heavier clouds moving in later with intensifying winds.

Outlook

Avalanche danger levels are not expected to change significantly. Daytime cycle of avalanche activity. Beware gliding snow.

Avalanche problems



Danger ratings



Expositions



morning

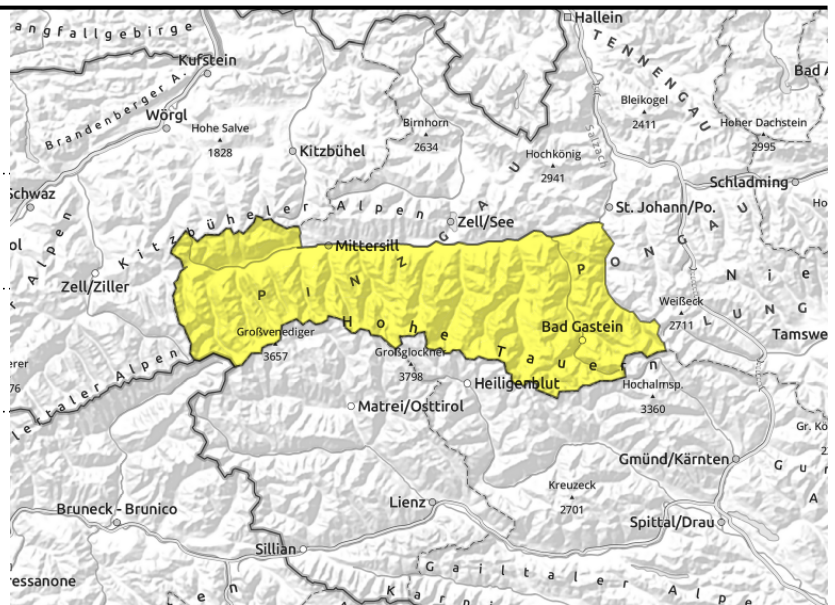
Großvenedigergruppe Nord, Großvenedigergruppe Alpenhauptkamm, Glocknergruppe Nord, Glocknergruppe Alpenhauptkamm, Goldberggruppe Alpenhauptkamm, Goldberggruppe Nord, Oberpinzgauer Grasberge



possible at any time of day or night



increasing naturally triggered avalanche activity over the morning hours



Rapid daytime cycle of naturally triggered avalanches in morning

Avalanche danger increases during the course of the morning from moderate to considerable. Likelihood of wet-snow avalanches triggering swiftly rises, which can often sweep along wet old snow and grow to medium size, esp. on very steep slopes and in rough and rocky terrain on S/E/W facing slopes up to high alpine regions and on north-facing slopes up to 2600 m. On steep wind-protected slopes in extended north-facing terrain, small-to-medium loose-snow avalanches are possible. The danger of glide-snow avalanches is again increasing. They are possible in all aspects and at any time of day or night. In high starting zones which have not yet discharged they can be medium-sized and plummet down to greenlands, esp. from starting zones where there is still sufficient snow on the ground on N/E facing slopes. Avoid zones below glide cracks. Also previously bare slopes can release glide-snow avalanches.

Snowpack structure

The snowpack on north-facing slopes is up to 2600 m isotherm and moist, on E/W facing slopes up to 3000 m, and on south-facing slopes up to summit levels. On sunny slopes, many areas below 1800 m are again bare of snow. The moist sticky fresh snow has bonded well and forms a thin melt-freeze crust during the night, then quickly softening in the morning. Sun and warmth are making the snowpack ever wetter.

In steep grass-covered terrain which has not yet discharged, glide-snow avalanches can release and plummet down to bare slopes.

Weather

Scattered thin cirrus clouds during the night, light to moderate NW winds.

On Saturday, sunshine, thin cirrus clouds, light-to-moderate W/NW winds. At 2000 m: 7-12 degrees; at 3000 m: 3 degrees. Also on Sunday, following a night of scattered clouds, initially sunny, heavier clouds moving in later with intensifying winds.

Outlook

Avalanche danger levels are not expected to change significantly. Daytime cycle of avalanche

Avalanche problems



Danger ratings



Expositions



activity. Beware gliding snow.

Avalanche problems



Danger ratings



Expositions



afternoon

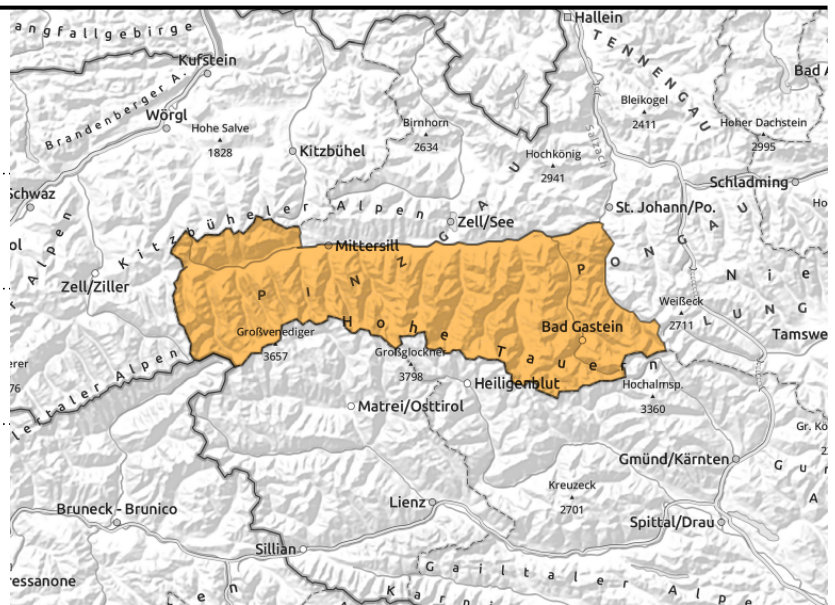
Großvenedigergruppe Nord, Großvenedigergruppe Alpenhauptkamm, Glocknergruppe Nord, Glocknergruppe Alpenhauptkamm, Goldberggruppe Alpenhauptkamm, Goldberggruppe Nord, Oberpinzgauer Grasberge



Naturally triggered avalanches in afternoon on many steep slopes



possible at any time of day or night



Rapid daytime cycle of naturally triggered avalanches in morning

Avalanche danger increases during the course of the morning from moderate to considerable. Likelihood of wet-snow avalanches triggering swiftly rises, which can often sweep along wet old snow and grow to medium size, esp. on very steep slopes and in rough and rocky terrain on S/E/W facing slopes up to high alpine regions and on north-facing slopes up to 2600 m. On steep wind-protected slopes in extended north-facing terrain, small-to-medium loose-snow avalanches are possible. The danger of glide-snow avalanches is again increasing. They are possible in all aspects and at any time of day or night. In high starting zones which have not yet discharged they can be medium-sized and plummet down to greenlands, esp. from starting zones where there is still sufficient snow on the ground on N/E facing slopes. Avoid zones below glide cracks. Also previously bare slopes can release glide-snow avalanches.

Snowpack structure

The snowpack on north-facing slopes is up to 2600 m isotherm and moist, on E/W facing slopes up to 3000 m, and on south-facing slopes up to summit levels. On sunny slopes, many areas below 1800 m are again bare of snow. The moist sticky fresh snow has bonded well and forms a thin melt-freeze crust during the night, then quickly softening in the morning. Sun and warmth are making the snowpack ever wetter.

In steep grass-covered terrain which has not yet discharged, glide-snow avalanches can release and plummet down to bare slopes.

Weather

Scattered thin cirrus clouds during the night, light to moderate NW winds.

On Saturday, sunshine, thin cirrus clouds, light-to-moderate W/NW winds. At 2000 m: 7-12 degrees; at 3000 m: 3 degrees. Also on Sunday, following a night of scattered clouds, initially sunny, heavier clouds moving in later with intensifying winds.

Outlook

Avalanche danger levels are not expected to change significantly. Daytime cycle of avalanche

Avalanche problems



Danger ratings



Expositions



activity. Beware gliding snow.

Translated by Jeffrey McCabe, www.creativtrans.com

Avalanche problems



Danger ratings



Expositions

