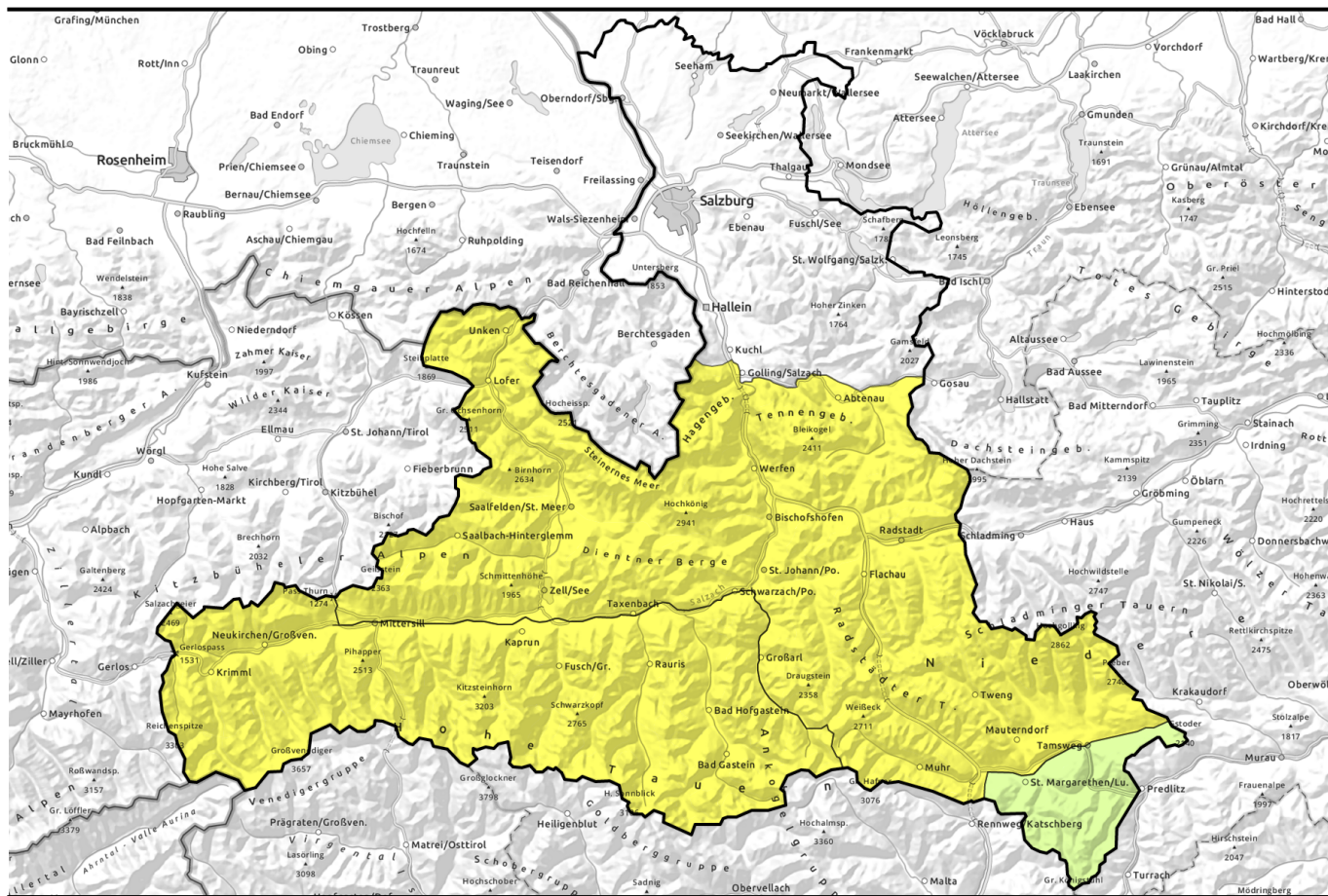


morning



Danger of wet-snow/glide-snow avalanches increases as each day progresses

	Chiemgauer Alpen, Heutal, Reiteralpe, Kitzbüheler Alpen, Glemmtal, Dientner Grasberge, Pongauer Grasberge, Niedere Tauern Nord, Loferer und Leoganger Steinberge, Steinernes Meer, Hochkönig, Hagengebirge, Göllstock, Tennengebirge, Gosaukamm, Niedere Tauern Alpenhauptkamm, Niedere Tauern Süd, Ankogelgruppe, Muhr	
	Nockberge	
	Großvenedigergruppe Nord, Großvenedigergruppe Alpenhauptkamm, Glocknergruppe Nord, Glocknergruppe Alpenhauptkamm, Goldberggruppe Alpenhauptkamm, Goldberggruppe Nord, Oberpinzgauer Grasberge	

Avalanche problems



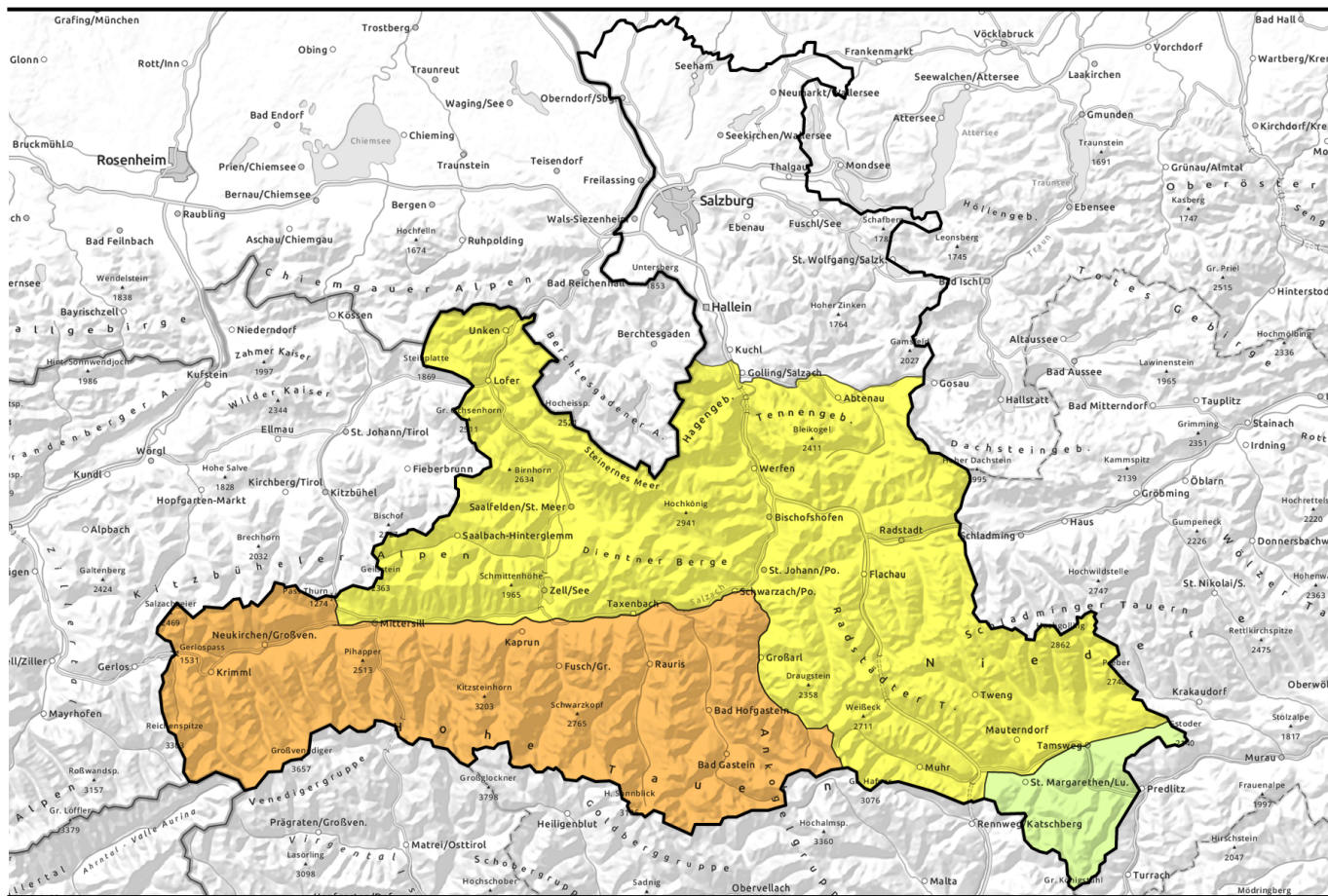
Danger ratings




Expositions





afternoon





Tageszeitliche Zunahme der Lawinengefahr durch Nass- und Gleitschneelawinen

- 


Chiemgauer Alpen, Heutal, Reiteralpe, Kitzbüheler Alpen, Glemmtal, Dientner Grasberge, Pongauer Grasberge, Niedere Tauern Nord, Loferer und Leoganger Steinberge, Steinernes Meer, Hochkönig, Hagengebirge, Göllstock, Tennengebirge, Gosaukamm, Niedere Tauern Alpenhauptkamm, Niedere Tauern Süd, Ankogelgruppe, Muhr


- 

Nockberge


- 

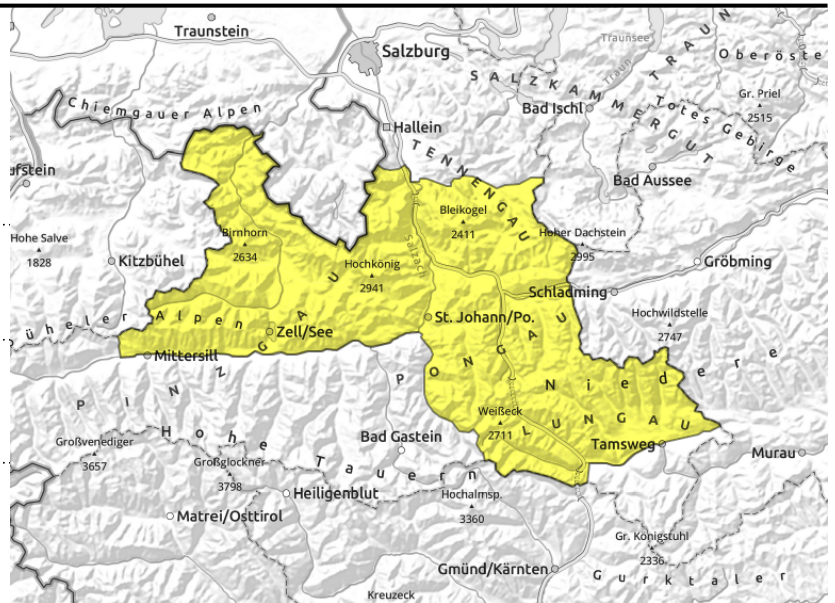
Großvenedigergruppe Nord, Großvenedigergruppe Alpenhauptkamm, Glocknergruppe Nord, Glocknergruppe Alpenhauptkamm, Goldberggruppe Alpenhauptkamm, Goldberggruppe Nord, Oberpinzgauer Grasberge



Avalanche problems						Danger ratings					Expositions	
New snow	Wind drifted snow	Persistent weak layer	Wet snow	Gliding snow	Cornices	no distinct	1 low	2 moderate	3 considerable	4 high	5 very high	

morning

Chiemgauer Alpen, Heutal, Reiteralpe, Kitzbüheler Alpen, Glemmtal, Dientner Grasberge, Pongauer Grasberge, Niedere Tauern Nord, Loferer und Leoganger Steinberge, Steinernes Meer, Hochkönig, Hagengebirge, Göllstock, Tennengebirge, Gosaukamm, Niedere Tauern Alpenhauptkamm, Niedere Tauern Süd, Ankogelgruppe, Muhr



possible at any time of day or night



daily danger cycle of naturally triggered avalanche activity

Gliding snow activity continues, also small wet-snow avalanches possible

Avalanche danger is MODERATE. Due to rising temperatures and lots of solar radiation, glide-snow avalanches continue to be the main danger: in all aspects at any time of day or night, medium-sized when triggering from terrain which has not yet discharged, plummeting down to greenlands, esp. in starting zones in extended north-facing terrain. Avoid zones below glide-cracks.

As the day progresses, likelihood of small loose-snow slides will increase on sunny slopes and in rough and rocky terrain in all aspects, esp. on very steep W/N/E facing slopes above 2200m.

Snowpack structure

The fresh snow from Wednesday has bonded and consolidated, became moistened on Thursday in all aspects. Due to nocturnal outgoing radiation, a thin melt-freeze crust forms, softening quickly the next day. Beneath it the snowpack on W/N/E facing slopes is often isotherm and moistened down to the ground. On sunny slopes the fresh snow has already melted, the slopes are becoming bare again. Glide cracks are a clear danger signal for the entire snowpack gliding downhill over smooth ground. In steep grass-covered terrain which has not yet discharged, glide-snow avalanches can release and plummet down to bare slopes.

Weather

The night will have clear skies and be unusually mild. On Friday, good visibility and sunshine, only a few convective clouds. Winds will be light from W/NW. At 2000 m: 5-10 degrees; at 3000 m: 2 degrees.

Outlook

The snowpack is becoming ever wetter. Hardly any change in avalanche danger levels, latent danger of glide-snow avalanches persists.

Avalanche problems



Danger ratings



Expositions

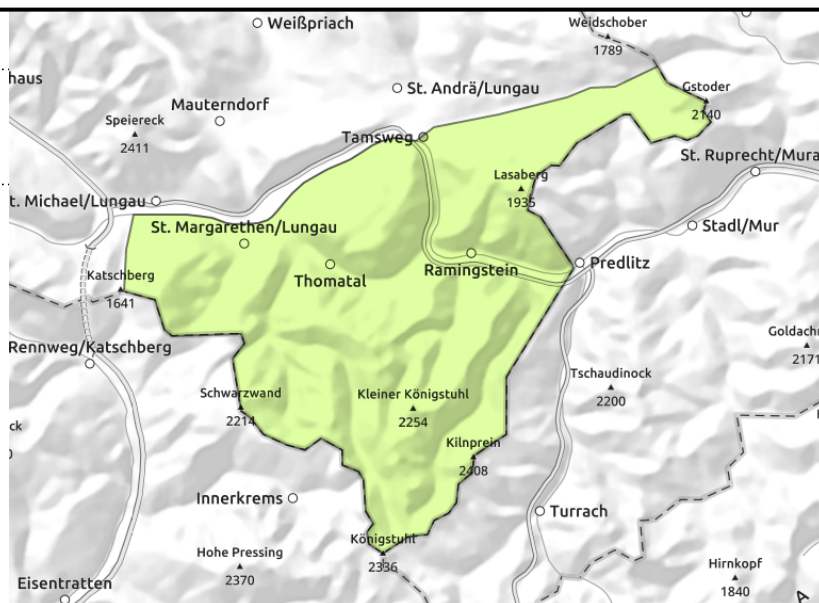


morning

Nockberge



in isolated cases only



Glide-snow avalanches possible only in few spots

Avalanche danger is low. Naturally triggered glide-snow avalanches are possible in isolated cases in terrain which has not yet discharged in all aspects, medium releases cannot be ruled out.

Snowpack structure

At night, a melt-freeze crust forms, swiftly melting in the daytime. At least on north facing slopes, there is potential for medium-sized glid-snow avalanches. On sunny slopes there is too little snow on the ground.

Weather

The night will have clear skies and be unusually mild. On Friday, good visibility and sunshine, only a few convective clouds. Winds will be light from W/NW. At 2000 m: 5-10 degrees; at 3000 m: 2 degrees.

Outlook

The snowpack is becoming ever wetter. Hardly any change in avalanche danger levels, latent danger of glide-snow avalanches persists.

Avalanche problems



New snow



Wind drifted snow



Persistent weak layer



Wet snow



Gliding snow



Cornices



no distinct

Danger ratings



1

low



2

moderate



3

considerable



4

high



5

very high

Expositions



morning

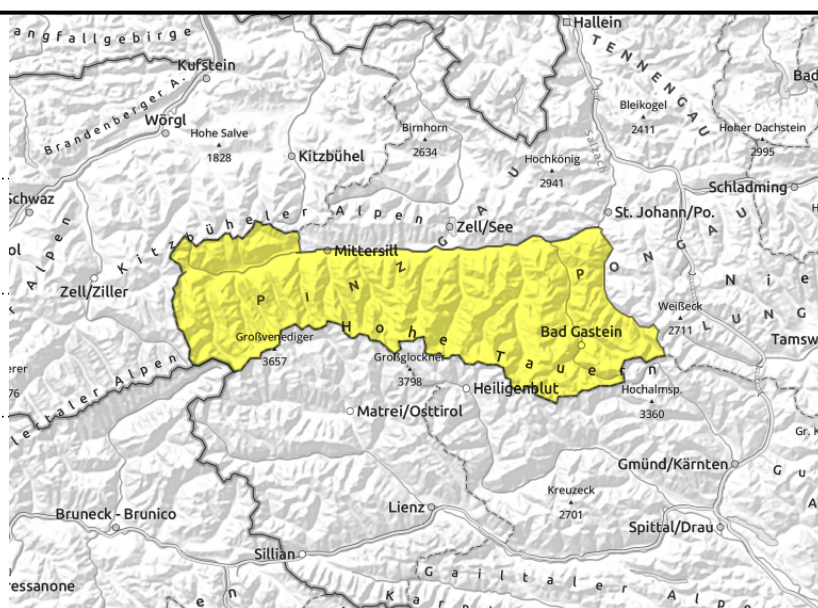
Großvenedigergruppe Nord, Großvenedigergruppe Alpenhauptkamm, Glocknergruppe Nord, Glocknergruppe Alpenhauptkamm, Goldberggruppe Alpenhauptkamm, Goldberggruppe Nord, Oberpinzgauer Grasberge



possible at any time of day or night



increasing naturally triggered avalanche activity over the morning hours



Quickly increasing naturally triggered loose-snow/glide-snow avalanches in the morning

Avalanche danger increases during the course of the morning from moderate to considerable. Likelihood of wet-snow avalanches triggering swiftly rises, which can often sweep along wet old snow and grow to medium size, esp. on very steep slopes and in rough and rocky terrain on S/E/W facing slopes up to high alpine regions and on north-facing slopes up to 2600 m. On steep wind-protected slopes in extended north-facing terrain, small-to-medium loose-snow avalanches are possible. The danger of glide-snow avalanches is again increasing. They are possible in all aspects and at any time of day or night. In high starting zones which have not yet discharged they can be medium-sized and plummet down to greenlands, esp. from starting zones where there is still sufficient snow on the ground on N/E facing slopes. Avoid zones below glide cracks. Also previously bare slopes can release glide-snow avalanches.

Isolated snowdrift masses in extended north-facing terrain can be triggered mostly by large additional loading, are easily recognized.

Snowpack structure

The snowpack on north-facing slopes is up to 2600 m isotherm and moist, on E/W facing slopes up to 3000 m, and on south-facing slopes up to summit levels. On sunny slopes, many areas below 1800 m are again bare of snow. The moist sticky fresh snow has bonded well and forms a thin melt-freeze crust during the night, then quickly softening in the morning. Sun and warmth are making the snowpack ever wetter.

Glide cracks are a clear danger signal for the entire snowpack gliding downhill over smooth ground. In steep grass-covered terrain which has not yet discharged, glide-snow avalanches can release and plummet down to bare slopes.

Weather

The night will have clear skies and be unusually mild. On Friday, good visibility and sunshine, only a few convective clouds. Winds will be light from W/NW. At 2000 m: 5-10 degrees; at 3000 m: 2

Avalanche problems



New snow

Wind drifted snow

Persistent weak layer

Wet snow

Gliding snow

Cornices

no distinct

Danger ratings



1 low

2 moderate

3 considerable

4 high

5 very high

Expositions



degrees.

Outlook

The snowpack is becoming ever wetter. Hardly any change in avalanche danger levels, latent danger of glide-snow avalanches dominates.

Avalanche problems



Danger ratings



Expositions



afternoon

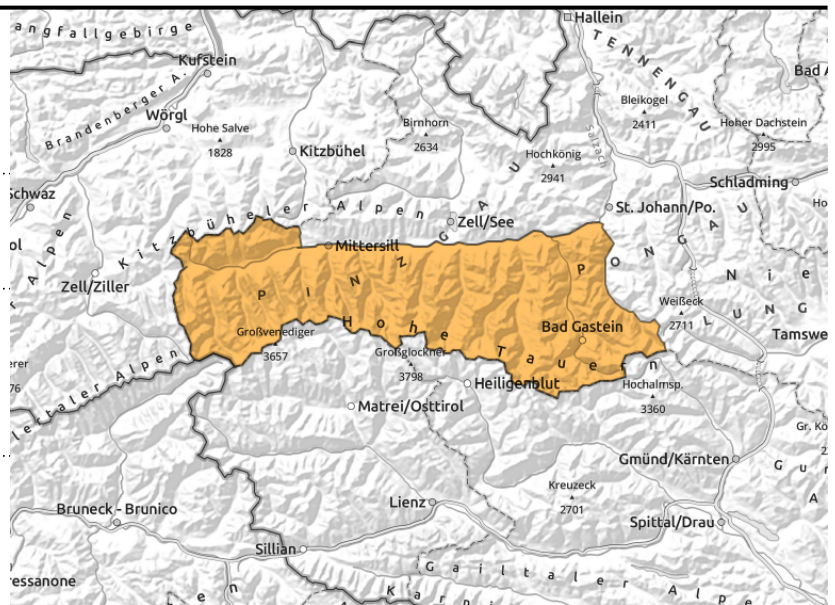
Großvenedigergruppe Nord, Großvenedigergruppe Alpenhauptkamm, Glocknergruppe Nord, Glocknergruppe Alpenhauptkamm, Goldberggruppe Alpenhauptkamm, Goldberggruppe Nord, Oberpinzgauer Grasberge



increasing naturally triggered avalanche activity over the morning hours, on many steep slopes



possible at any time of day or night



Quickly increasing naturally triggered loose-snow/glide-snow avalanches in the morning

Avalanche danger increases during the course of the morning from moderate to considerable. Likelihood of wet-snow avalanches triggering swiftly rises, which can often sweep along wet old snow and grow to medium size, esp. on very steep slopes and in rough and rocky terrain on S/E/W facing slopes up to high alpine regions and on north-facing slopes up to 2600 m. On steep wind-protected slopes in extended north-facing terrain, small-to-medium loose-snow avalanches are possible. The danger of glide-snow avalanches is again increasing. They are possible in all aspects and at any time of day or night. In high starting zones which have not yet discharged they can be medium-sized and plummet down to greenlands, esp. from starting zones where there is still sufficient snow on the ground on N/E facing slopes. Avoid zones below glide cracks. Also previously bare slopes can release glide-snow avalanches. Isolated snowdrift masses in extended north-facing terrain can be triggered mostly by large additional loading, are easily recognized.

Snowpack structure

The snowpack on north-facing slopes is up to 2600 m isotherm and moist, on E/W facing slopes up to 3000 m, and on south-facing slopes up to summit levels. On sunny slopes, many areas below 1800 m are again bare of snow. The moist sticky fresh snow has bonded well and forms a thin melt-freeze crust during the night, then quickly softening in the morning. Sun and warmth are making the snowpack ever wetter.

Glide cracks are a clear danger signal for the entire snowpack gliding downhill over smooth ground. In steep grass-covered terrain which has not yet discharged, glide-snow avalanches can release and plummet down to bare slopes.

Weather

The night will have clear skies and be unusually mild. On Friday, good visibility and sunshine, only a few convective clouds. Winds will be light from W/NW. At 2000 m: 5-10 degrees; at 3000 m: 2

Avalanche problems



Danger ratings



Expositions



degrees.

Outlook

The snowpack is becoming ever wetter. Hardly any change in avalanche danger levels, latent danger of glide-snow avalanches dominates.

Translated by Jeffrey McCabe, www.creativtrans.com

Avalanche problems



Danger ratings



Expositions

