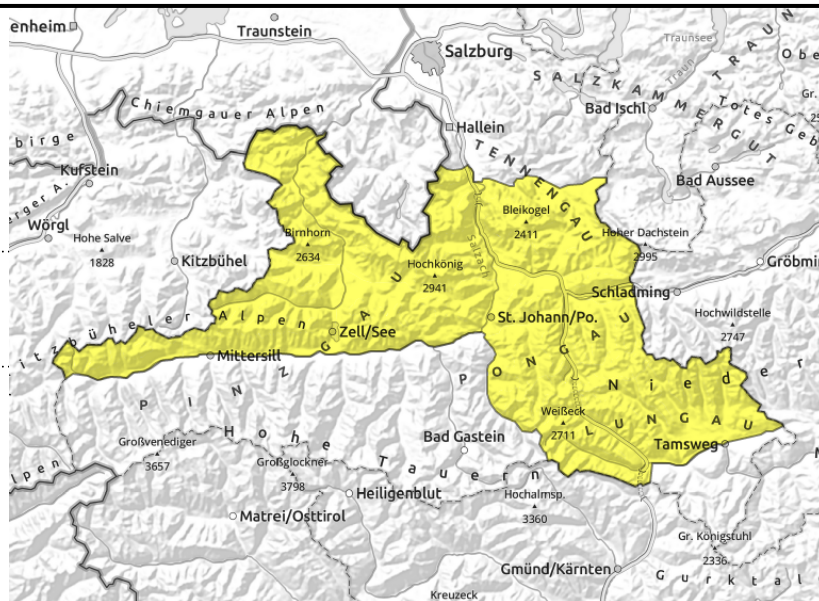


Fresh snow and gliding snow are the causes of avalanches. Wet-snow problem temporarily receding.

	Chiemgauer Alpen, Heutal, Reiteralpe, Kitzbüheler Alpen, Glemmtal, Dientner Grasberge, Pongauer Grasberge, Niedere Tauern Nord, Loferer und Leoganger Steinberge, Steinernes Meer, Hochkönig, Hagengebirge, Göllstock, Tennengebirge, Gosaukamm, Niedere Tauern Alpenhauptkamm, Niedere Tauern Süd, Ankogelgruppe, Muhr, Oberpinzgauer Grasberge	
	Nockberge	
	2200 m Großvenedigergruppe Nord, Großvenedigergruppe Alpenhauptkamm, Glocknergruppe Nord, Glocknergruppe Alpenhauptkamm, Goldberggruppe Nord, Goldberggruppe Alpenhauptkamm	

Avalanche problems	Danger ratings	Expositions

Chiemgauer Alpen, Heutal, Reiteralpe, Kitzbüheler Alpen, Glemmtal, Dientner Grasberge, Pongauer Grasberge, Niedere Tauern Nord, Loferer und Leoganger Steinberge, Steinernes Meer, Hochkönig, Hagengebirge, Göllstock, Tennengebirge, Gosaukamm, Niedere Tauern Alpenhauptkamm, Niedere Tauern Süd, Ankogelgruppe, Muhr, Oberpinzgauer Grasberge



possible at any time of day or night

Ongoing danger of glide-snow avalanches. Circumvent freshly generated snowdrifts.

Avalanche danger is MODERATE. Main danger: gliding snow activity. Glide-snow avalanches can release at any time of day or night in all aspects, medium-sized in zones which have not yet discharged, is isolated cases large-sized, plummeting down to greenlands. Avoid zones below glide-cracks.

In addition, new danger zones due to fresh snow and snowdrifts. Weak layers inside the thin ridgeline drifted masses can be prone to triggering, releases mostly small-to-medium.

Snowpack structure

By Wednesday morning, 10-15 cm of fresh snow is expected, blanketing isotherm and moist snowpack surfaces at intermediate and high altitudes on W/N/E facing slopes, on sunny slopes falling on bare ground. The fresh snow will bond well with the old snowpack surface, hardly any weak layers. Small drifts near ridges and behind discontinuities will be generated, can contain trigger-prone layers of loose fresh fallen snow.

At least in extended north-facing terrain, medium-to-large glide-snow avalanches are still a threat. On sunny slopes there is too little snow. Releases can sweep masses of wet snow with them, plummet down to greenlands.

Weather

At night a cold front will move through, bringing 10-15 cm of fresh snow by Wednesday (Upper Pinzgau 20 cm), snowfall level dropping to 1200-1000 m at night. The W/NW winds will slacken off during the course of the night.

Wednesday will begin with overcast skies, reduced visibility, rainfall/snowfall, snowfall level at 1000-1200 m, rising over the daytime hours. Snowfall could last until afternoon, possibly heavy in Upper Pinzgau, in most places tapering off. Lower temperatures. At 2000 m: -4 degrees; at 3000 m: -6 to -4 degrees.

Outlook

On Thursday, warmer and sunny. Loose-snow activity will increase somewhat. Gliding snow activity will persist.

Avalanche problems



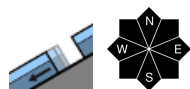
Danger ratings



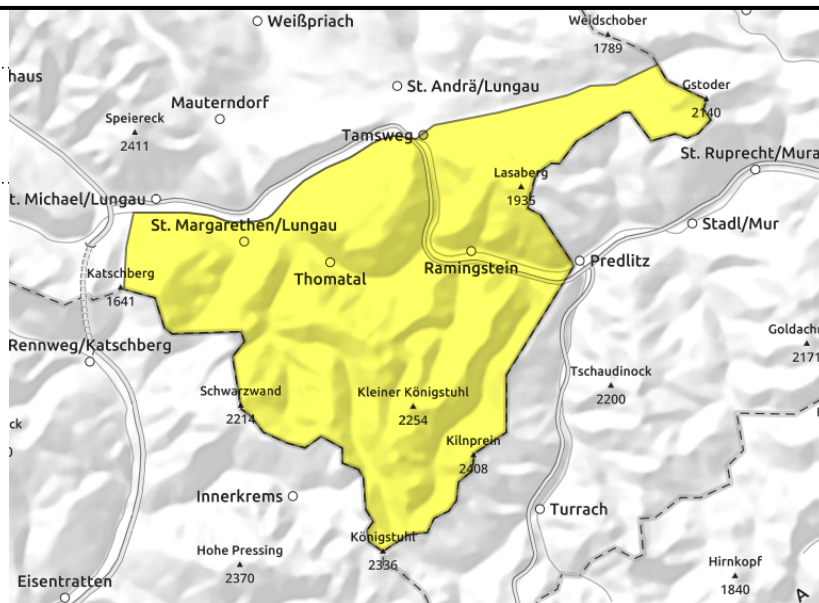
Expositions



Nockberge



steep grass-covered slopes, possible at any time of day or night



Latent gliding snow problem

Avalanche danger is MODERATE.

Naturally triggered wet-snow and glide-snow avalanches are expected, mostly medium sized, also larger, these can plummet down to ground where there is no snow on the ground.

Snowpack structure

A melt-freeze crust will form at night, fresh snow will be deposited on top of it. On north-facing slopes, medium-sized glide-snow avalanches are still possible. On sunny slopes there is too little snow. Due to loss of firmness, avalanches can sweep along huge snow masses in their plummet path, even reach greenlands.

Weather

Strong southerly foehn wind in the evening in the Tauern, then a cold front will move through from the west. In Lungau and Nockbege, hardly any precipitation. On Wednesday, overcast skies, then clouds will disperse and it will turn sunny. Brisk NW winds. At 2000 m: -3 or -2 degrees; at 3000 m: -6 to -4 degrees.

Outlook

On Thursday, warmer and sunny. Loose-snow activity will increase somewhat. Gliding snow activity will persist.

Avalanche problems



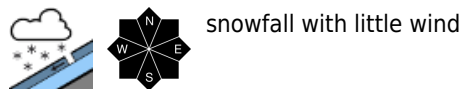
Danger ratings



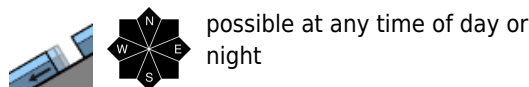
Expositions



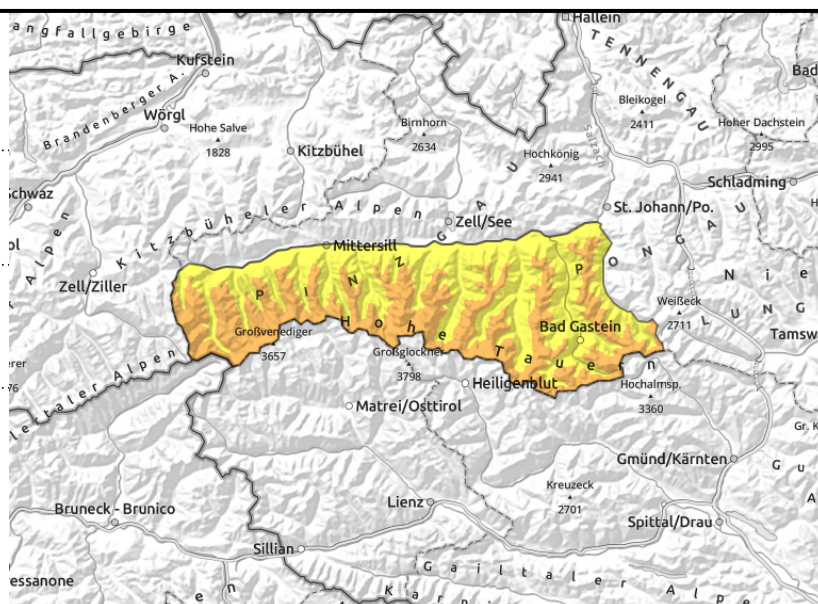
Großvenedigergruppe Nord, Großvenedigergruppe Alpenhauptkamm, Glocknergruppe Nord, Glocknergruppe Alpenhauptkamm, Goldberggruppe Nord, Goldberggruppe Alpenhauptkamm



snowfall with little wind



possible at any time of day or night



Fresh snow and drifts during daytime hours. Continuing latent danger of glide-snow avalanches.

Avalanche danger above 2200 m is considerable, below that altitude danger is moderate. Main danger: weak layers in the fresh fallen snow. Loose-snow avalanches can be triggered by 1 person in all aspects, can sweep along masses of wet snow in their plummet paths and grow to medium size. Increasing naturally triggered loose-snow avalanches can be expected, esp. in steep rough and rocky terrain and in case of extended bright intervals.

Latent danger prevails of glide-snow avalanches in all aspects and any time of day or night, medium sized in zones which have not yet discharged, they can reach greenland altitudes. Avoid zones below glide cracks.

Snowpack structure

By Wednesday morning, 20-50 of fresh snow is expected, blanketing isotherm and moist snowpack surfaces at intermediate and high altitudes on W/N/E facing slopes, on sunny slopes falling on bare ground. The fresh snow will bond well with the old snowpack surface, hardly any weak layers. Small drifts near ridges and behind discontinuities will be generated, can contain trigger-prone layers of loose fresh fallen snow.

At least in extended north-facing terrain, medium-to-large glide-snow avalanches are still a threat. On sunny slopes there is too little snow. Releases can sweep masses of wet snow with them, plummet down to greenlands.

Weather

Strong southerly foehn wind in the evening in the Tauern, then a cold front will move through from the west. Temperatures will drop markedly, snowfall level descend swiftly to 1000 m.

On Wednesday, overcast skies, reduced visibility, rainfall/snowfall, snowfall level 900-1100 m, rising during the daytime. Esp. in Upper Pinzgau, heavy snowfall initially. Near Hohe Tauern, 30-40 cm of fresh snow overall by Wednesday afternoon.

The W/NW winds will slacken off during the course of the night. At high-alpine altitudes on the Main Alpine Ridge, a weak southerly wind will be blowing. At 2000 m: -3 degrees, -1 degree in afternoon; at 3000 m: -8 rising to -4 degrees.

Avalanche problems



Danger ratings



Expositions



Outlook

On Thursday, warmer and sunny. Loose-snow activity will increase somewhat. Gliding snow activity will persist.

Translated by Jeffrey McCabe, www.creativtrans.com

Avalanche problems



Danger ratings



Expositions

