

Snowpack becoming wet also at high altitudes

	Chiemgauer Alpen, Heutal, Reiteralpe, Kitzbüheler Alpen, Glemmtal, Dientner Grasberge, Pongauer Grasberge, Niedere Tauern Nord	
	Nockberge	
	Großvenedigergruppe Alpenhauptkamm, Glocknergruppe Alpenhauptkamm, Goldberggruppe Alpenhauptkamm, Ankogelgruppe, Muhr, Großvenedigergruppe Nord, Glocknergruppe Nord, Goldberggruppe Nord, Niedere Tauern Süd, Tennengebirge, Gosaukamm, Oberpinzgauer Grasberge, Loferer und Leoganger Steinberge, Niedere Tauern Alpenhauptkamm, Steinernes Meer, Hochkönig, Hagengebirge, Göllstock	

Avalanche problems



Danger ratings



Expositions



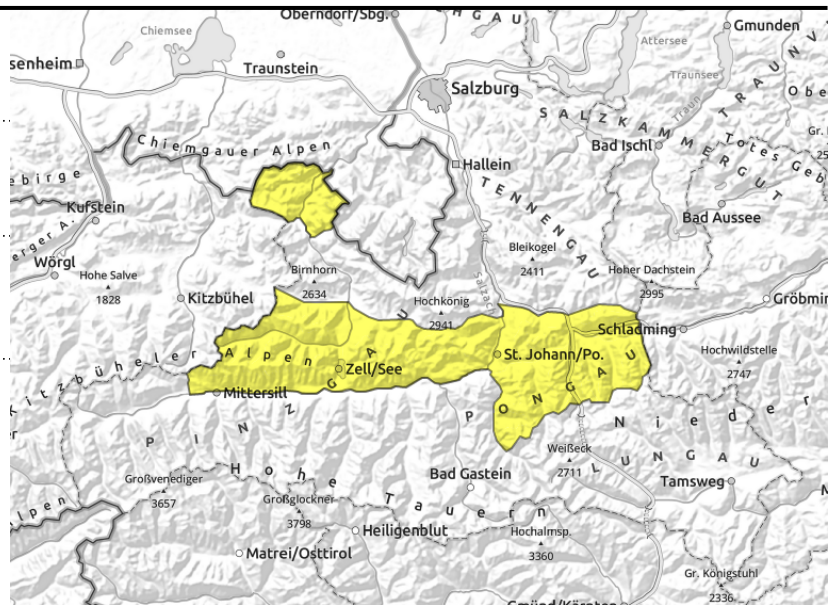
Chiemgauer Alpen, Heutal, Reiteralpe, Kitzbüheler Alpen, Glemmtal, Dientner Grasberge, Pongauer Grasberge, Niedere Tauern Nord



possible at any time of day or night



naturally triggered avalanche activity



Naturally triggered wet-snow/glide-snow avalanches possible at any time in zones which have not yet discharged

Avalanche danger is MODERATE.

Due to higher temperatures and solar radiation on Saturday, naturally triggered wet-snow and glide-snow avalanches are expected, mostly medium sized, also larger, these can plummet down to ground where there is no snow on the ground.

Snowpack structure

In the last 4 days the overall snow depths at 1800-2000 m have receded by 40 cm. Due to this far-reaching melting process, the magnitude of anticipated avalanches is decreasing gradually. Hardly any melt-freeze crusts form at night. On north-facing slopes there is still some potential for large glide-snow avalanches. On sunny slopes there is little snow on the ground. Due to the loss of firmness, avalanches can sweep along massive amounts of snow in their plummet paths and reach zones below 1700 m where there is hardly any snow.

Weather

Nighttime skies will be variably cloudy, clouds from the west will move in later in the night. On Tuesday, dry and foehn-generated sunny weather, compact clouds above summit level, somewhat diffuse light, made hazier by dust from the Sahara. The winds will be brisk, stronger in the Tauern, from the south. In evening, heavy cloud will move in from the NW, temperatures will drop noticeably, brisk W/NW winds will intensify, reaching 60-80 km/hr, visibility will deteriorate. In Tauern and Lungau sunny for longer. Precipitation will follow on Tuesday night. At 2000 m before the cold front arrives: 10-12 degrees; at 3000 m. 3-5 degrees.

Outlook

On Wednesday, somewhat cooler, some fresh snowfall is expected. The gliding snow activity will not decrease.

Avalanche problems



New snow



Wind drifted snow



Persistent weak layer



Wet snow



Gliding snow



Cornices



no distinct

Danger ratings



1 low



2 moderate



3 considerable



4 high



5 very high

Expositions



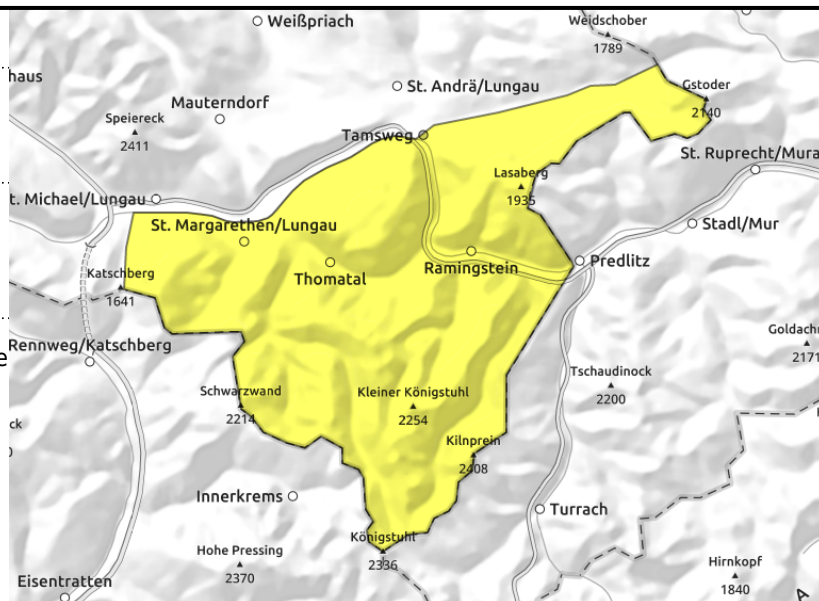
Nockberge



hefty impulse of warmth,
naturally triggered avalanches
activity



in steep grassy terrain, possible
at any time of day or night



Snowpack becoming massively wet

Avalanche danger is MODERATE.

Naturally triggered wet-snow and glide-snow avalanches are expected, mostly medium sized, also larger, these can plummet down to ground where there is no snow on the ground. Such activity will increase as the day progresses.

Snowpack structure

In the last 4 days the overall snow depths at 1800-2000 m have receded by 40 cm. Due to this far-reaching melting process, the magnitude of anticipated avalanches is decreasing gradually. Hardly any melt-freeze crusts form at night. On north-facing slopes there is still some potential for large glide-snow avalanches. On sunny slopes there is little snow on the ground. Due to the loss of firmness, avalanches can sweep along massive amounts of snow in their plummet paths and reach zones below 1700 m where there is hardly any snow.

Weather

Nighttime skies will be variably cloudy, clouds from the west will move in later in the night. On Tuesday, dry and foehn-generated sunny weather, compact clouds above summit level, somewhat diffuse light, made hazier by dust from the Sahara. The winds will be brisk, stronger in the Tauern, from the south. In evening, heavy cloud will move in from the NW, temperatures will drop noticeably, brisk W/NW winds will intensify, reaching 60-80 km/hr, visibility will deteriorate. In Tauern and Lungau sunny for longer. Precipitation will follow on Tuesday night. At 2000 m before the cold front arrives: 10-12 degrees; at 3000 m. 3-5 degrees.

Outlook

On Wednesday, somewhat cooler, some fresh snowfall is expected. The gliding snow activity will not decrease.

Avalanche problems



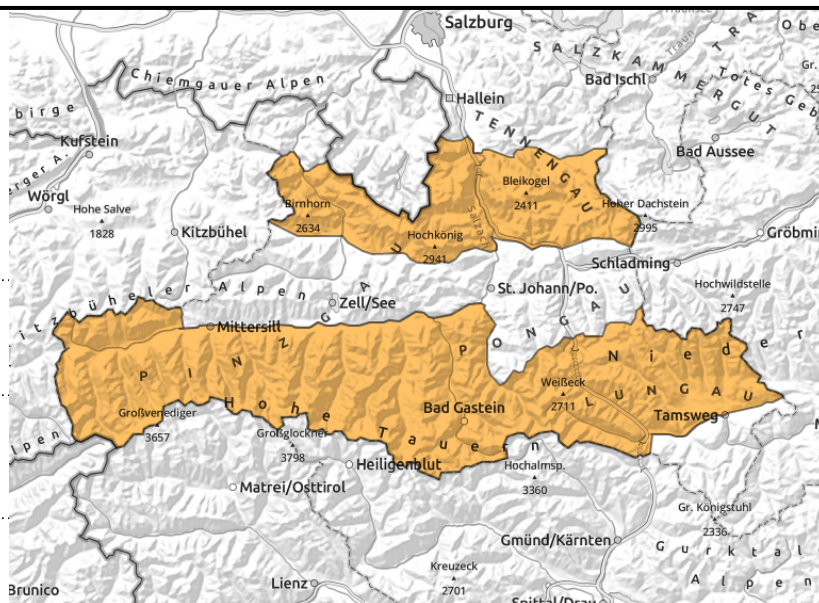
Danger ratings



Expositions



Großvenedigergruppe Alpenhauptkamm, Glocknergruppe Alpenhauptkamm, Goldberggruppe Alpenhauptkamm, Ankogelgruppe, Muhr, Großvenedigergruppe Nord, Glocknergruppe Nord, Goldberggruppe Nord, Niedere Tauern Süd, Tennengebirge, Gosaukamm, Oberpinzgauer Grasberge, Loferer und Leoganger Steinberge, Niedere Tauern Alpenhauptkamm, Steinernes Meer, Hochkönig, Hagengebirge, Göllstock



in grass-covered terrain which has not yet discharged



naturally triggered avalanches activity, increasingly wet snowpack at high altitudes

Snowpack becoming massively wet

Avalanche danger is CONSIDERABLE.

Naturally triggered wet-snow and glide-snow avalanches are expected, mostly medium sized, also larger, they can sweep along large amounts of snow with them and grow large-sized. The wetness is reaching ever higher altitudes: on south-facing slopes at all aspects, on north-facing slopes below 2600 m; on E/W facing slopes below 2800 m, particularly where there is not much snow on the ground and in rocky terrain, wet-snow avalanches are possible. Backcountry tours should pay close heed to the march of time during the day, and its results.

Huge cornices are losing their firmness through wetness, can break or collapse during the day.

Snowpack structure

At night only a thin melt-freeze crust can form, it quickly melts in the morning. Apart from altitude, aspect and steepness gradient decide the degree of wetness. On steep E/S facing slopes they are the first to become wet, on south-facing slopes up to high alpine regions, on E/W facing slopes up to 3000 m, on north-facing slopes below 2600 m. The snowpack is stable, so most avalanches are wet-snow ones, esp. in zones where there is not as much snow on the ground, they trigger esp. with large additional loading or when a cornice breaks. The loss of firmness leads to massive amounts of snow being possibly swept along in the plummet paths of releasing avalanches, even down to zones below 1700 m where there is hardly any snow.

Weather

Nighttime skies will be variably cloudy, clouds from the west will move in later in the night.

On Tuesday, dry and foehn-generated sunny weather, compact clouds above summit level, somewhat diffuse light, made hazier by dust from the Sahara. The winds will be brisk, stronger in the Tauern, from the south. In evening, heavy cloud will move in from the NW, temperatures will drop noticeably, brisk W/NW winds will intensify, reaching 60-80 km/hr, visibility will deteriorate. In Tauern and Lungau sunny for longer. Precipitation will follow on Tuesday night. At 2000 m before the cold front arrives: 10-12 degrees; at 3000 m. 3-5 degrees.

Avalanche problems



New snow



Wind drifted snow



Persistent weak layer



Wet snow



Gliding snow



Cornices



no distinct

Danger ratings



1

low



2

moderate



3

considerable



4

high



5

very high

Expositions



Outlook

On Wednesday, somewhat cooler, some fresh snowfall is expected. The gliding snow activity will not decrease.

Translated by Jeffrey McCabe, www.creativtrans.com

Avalanche problems



Danger ratings



Expositions

