






Marked rise in temperatures: increasing wet-snow and glide-snow avalanches

- 

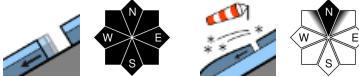
Chiemgauer Alpen, Heutal, Reiteralpe, Kitzbüheler Alpen, Glemmtal, Dientner Grasberge, Pongauer Grasberge, Oberpinzgauer Grasberge, Niedere Tauern Nord, Tennengebirge, Gosaukamm, Loferer und Leoganger Steinberge, Niedere Tauern Alpenhauptkamm


- 

Nockberge


- 

Großvenedigergruppe Alpenhauptkamm, Glocknergruppe Alpenhauptkamm, Goldberggruppe Alpenhauptkamm, Ankogelgruppe, Muhr, Großvenedigergruppe Nord, Glocknergruppe Nord, Goldberggruppe Nord, Steinernes Meer, Hochkönig, Hagengebirge, Göllstock, Niedere Tauern Süd



Avalanche problems



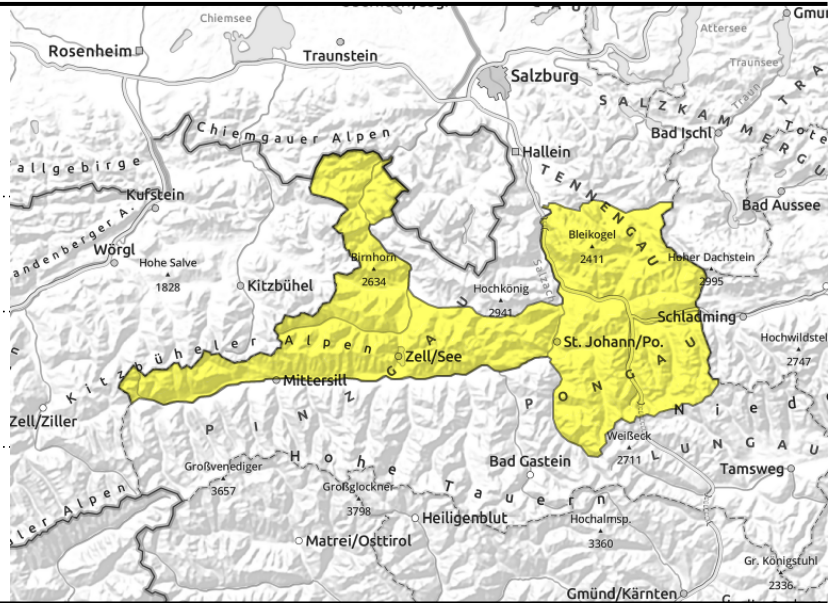
Danger ratings



Expositions



Chiemgauer Alpen, Heutal, Reiteralpe, Kitzbüheler Alpen, Glemmtal, Dientner Grasberge, Pongauer Grasberge, Oberpinzgauer Grasberge, Niedere Tauern Nord, Tennengebirge, Gosaukamm, Loferer und Leoganger Steinberge, Niedere Tauern Alpenhauptkamm



on steep grass-covered slopes, possible at any time of day or night



hefty impulse of warmth, naturally triggered avalanche activity

Increasing wet-snow and glide-snow avalanches

Avalanche danger is MODERATE.

The gliding snow problem is intensifying due to higher temperatures - in all aspects, at all altitudes, releases can reach medium size in high-altitude starting zones.

Naturally triggered avalanches are possible in extremely steep terrain at all altitudes, mostly small, sometimes larger. Wet-snow activity will increase during the course of the day.

Snowpack structure

The snowpack is thoroughly moist or at least superficially moist up to 2300 m. Nocturnal outgoing radiation is reduced, the snowpack quickly softens during the morning. On shady slopes above 2300 m the snowpack is compact with a wind crust capable of bearing loads.

Weather

During nocturnal hours, intermittent rainfall will pass through, snow showers above 2100 m. At high altitudes, up to 8 cm of fresh snow expected by morning (1-5 cm in Tauern). Winds from S/W directions will be light to moderate. At 2000 m: 5 degrees; at 3000m: -3 degrees.

On Friday, residual clouds till mid-morning. As of midday, often sunshine, light-to-moderate SW winds. At 2000 m: 5-10 degrees; at 3000 m: -3 to 1 degree. Only scattered clouds passing through.

Outlook

Due to warmth, wet-snow and gliding snow problems will intensify.

Avalanche problems



Danger ratings



Expositions



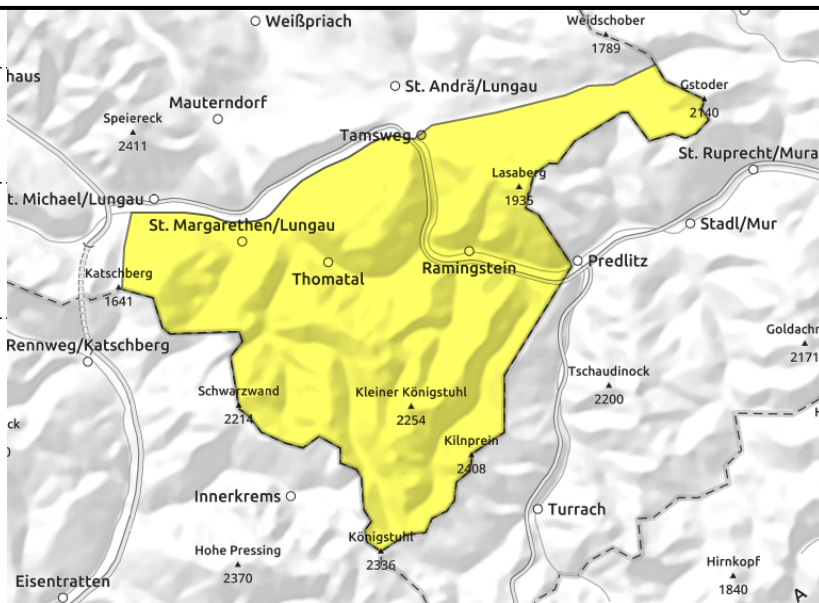
Nockberge



hefty impulse of warmth, naturally triggered avalanches activity



on steep grass-covered slopes, possible at any time of day or night



Increasing wet-snow and glide-snow avalanches

Avalanche danger is MODERATE.

Naturally triggered avalanches are possible in extremely steep terrain at all altitudes, mostly small, sometimes larger. Wet-snow activity will increase during the course of the day.

The gliding snow problem is intensifying due to higher temperatures - in all aspects, at all altitudes, releases can reach medium size in high-altitude starting zones.

Snowpack structure

The snowpack is thoroughly moist or at least superficially moist up to 2300 m. Nocturnal outgoing radiation is reduced, the snowpack quickly softens during the morning. On shady slopes above 2300 m the snowpack is compact with a wind crust capable of bearing loads.

Weather

During nocturnal hours, intermittent rainfall will pass through, snow showers above 2100 m. At high altitudes, up to 8 cm of fresh snow expected by morning (1-5 cm in Tauern). Winds from S/W directions will be light to moderate. At 2000 m: 5 degrees; at 3000m: -3 degrees.

On Friday, residual clouds till mid-morning. As of midday, often sunshine, light-to-moderate SW winds. At 2000 m: 5-10 degrees; at 3000 m: -3 to 1 degree. Only scattered clouds passing through.

Outlook

Due to warmth, wet-snow and gliding snow problems will intensify.

Avalanche problems



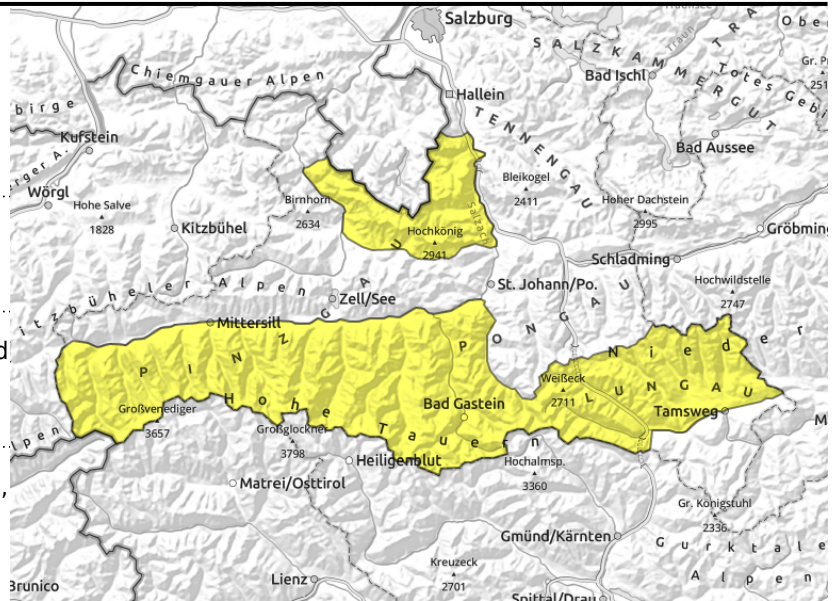
Danger ratings



Expositions



Großvenedigergruppe Alpenhauptkamm, Glocknergruppe Alpenhauptkamm, Goldberggruppe Alpenhauptkamm, Ankogelgruppe, Muhr, Großvenedigergruppe Nord, Glocknergruppe Nord, Goldberggruppe Nord, Steinernes Meer, Hochkönig, Hagengebirge, Göllstock, Niedere Tauern Süd



isolated, in steep grass-covered terrain which has not yet discharged



near to and distant from ridges, behind discontinuities

Increasing wet-snow and glide-snow avalanches

Avalanche danger is MODERATE.

The gliding snow problem is intensifying due to higher temperatures - in all aspects, at all altitudes, releases can reach medium size in high-altitude starting zones.

Naturally triggered avalanches are possible in extremely steep terrain at all altitudes, mostly small, sometimes larger. Wet-snow activity will increase during the course of the day.

Above 2600 m, slab avalanches can be triggered on north-facing slopes by 1 person in isolated cases, releases medium-sized. Danger zones increase in frequency and size with ascending altitude.

Snowpack structure

The snowpack is thoroughly moist or at least superficially moist up to 2300 m. Nocturnal outgoing radiation is reduced, the snowpack quickly softens during the morning. On shady slopes above 2300 m the snowpack is compact with a wind crust capable of bearing loads.

During nights with cloudy skies the snowpack cannot achieve sufficient outgoing radiation, it softens rapidly in the morning and becomes wetter.

Weather

During nocturnal hours, intermittent rainfall will pass through, snow showers above 2100 m. At high altitudes, up to 8 cm of fresh snow expected by morning (1-5 cm in Tauern). Winds from S/W directions will be light to moderate. At 2000 m: 5 degrees; at 3000m: -3 degrees.

On Friday, residual clouds till mid-morning. As of midday, often sunshine, light-to-moderate SW winds. At 2000 m: 5-10 degrees; at 3000 m: -3 to 1 degree. Only scattered clouds passing through.

Outlook

Due to warmth, wet-snow and gliding snow problems will intensify.

Translated by Jeffrey McCabe, www.creativtrans.com

Avalanche problems



Danger ratings



Expositions

