







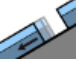



## Beware snowdrifts at high altitudes

	Chiemgauer Alpen, Heutal, Reiteralpe, Kitzbüheler Alpen, Glemmtal, Dientner Grasberge, Pongauer Grasberge, Oberpinzgauer Grasberge, Niedere Tauern Nord	 
	Nockberge, Niedere Tauern Alpenhauptkamm	   
	2400 m Großvenedigergruppe Alpenhauptkamm, Glocknergruppe Alpenhauptkamm, Goldberggruppe Alpenhauptkamm, Ankogelgruppe, Muhr, Großvenedigergruppe Nord, Glocknergruppe Nord, Goldberggruppe Nord, Steinernes Meer, Hochkönig, Hagengebirge, Göllstock, Loferer und Leoganger Steinberge, Tennengebirge, Gosaukamm, Niedere Tauern Süd	   

### Avalanche problems



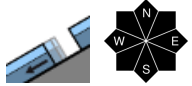
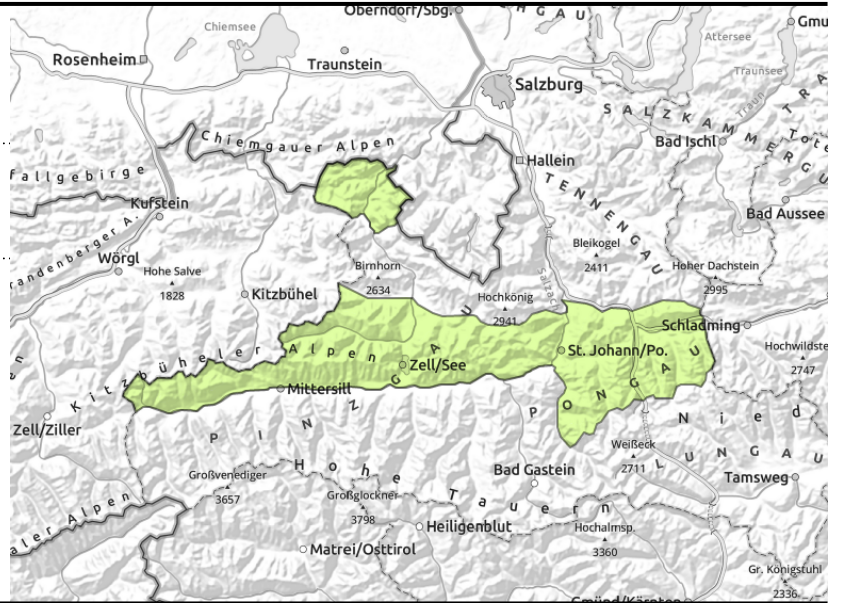
### Danger ratings



### Expositions



**Chiemgauer Alpen, Heutal, Reiteralpe, Kitzbüheler Alpen, Glemmtal, Dientner Grasberge, Pongauer Grasberge, Oberpinzgauer Grasberge, Niedere Tauern Nord**



in isolated cases

## Isolated glide-snow avalanches

Avalanche danger is low.

There is a latent gliding snow problem in all aspects at high altitudes. In high starting zones where there is a lot of snow, avalanches can reach medium sized in isolated cases.

Above 2000 m, small snowdrift accumulations are prone to triggering. Danger of falling outweighs that of snow masses.

## Snowpack structure

The snowpack is compact and thoroughly moist-to-wet, during the nocturnal hours above 2200 m a melt-freeze crust capable of bearing loads forms inadequately, subsequently softens rapidly in the daytime.

## Weather

During nocturnal hours, intermittent rainfall will pass through, snow showers above 1700 m. At high altitudes, up to 5 cm of fresh snow expected by morning. Winds from SW/NW directions will be light to moderate. At 2000 m: 0 degrees; at 3000m: -3 degrees.

On Thursday, frequent sunshine after residual clouds withdraw, and good visibility. As of midday, heavy cloud cover will move in, isolated rain and snow showers in afternoon, snowfall level at 2100 m. The moderate winds will reach 30 km/hr, shift from SW to W to NW. At 2000 m: 1-6 degrees; at 3000 m: -6 to -3 degrees.

## Outlook

Due to warmth and rain penetration of the snowpack, wet-snow and gliding snow problems will intensify.

### Avalanche problems



### Danger ratings



### Expositions



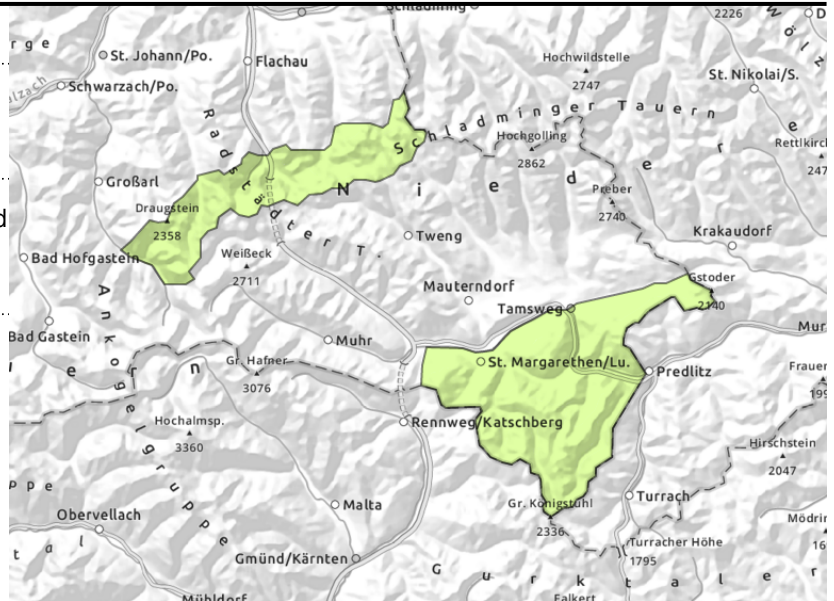
**Nockberge, Niedere Tauern Alpenhauptkamm**



isolated, in steep grass-covered terrain which has not yet discharged



near ridges, small, above 2200 m



**Isolated glide-snow avalanches. Minor snowdrift problem at high altitudes.**

Avalanche danger is low.

Glide-snow avalanches can release in all aspects and altitudes, reach medium size.

Isolated snowdrifts above 2000 m are trigger-prone, lie deposited atop soft layers. Danger of falling outweighs that of snow masses.

**Snowpack structure**

The snowpack up to 2000 m is thoroughly or superficially wet. The snowpack cannot achieve much outgoing longwave nocturnal radiation, it softens rapidly in the daytime hours. At high altitudes it is compact, with a wind crust mostly capable of bearing loads on the surface.

**Weather**

During nocturnal hours, intermittent rainfall will pass through, snow showers above 1700 m. At high altitudes, up to 5 cm of fresh snow expected by morning. Winds from SW/NW directions will be light to moderate. At 2000 m: 0 degrees; at 3000m: -3 degrees.

On Thursday, frequent sunshine after residual clouds withdraw, and good visibility. As of midday, heavy cloud cover will move in, isolated rain and snow showers in afternoon, snowfall level at 2100 m. The moderate winds will reach 30 km/hr, shift from SW to W to NW. At 2000 m: 1-6 degrees; at 3000 m: -6 to -3 degrees.

**Outlook**

Due to warmth and rain penetration of the snowpack, wet-snow and gliding snow problems will intensify.

**Avalanche problems**



New snow



Wind drifted snow



Persistent weak layer



Wet snow



Gliding snow



Cornices



no distinct

**Danger ratings**



1

low



2

moderate



3

considerable



4

high



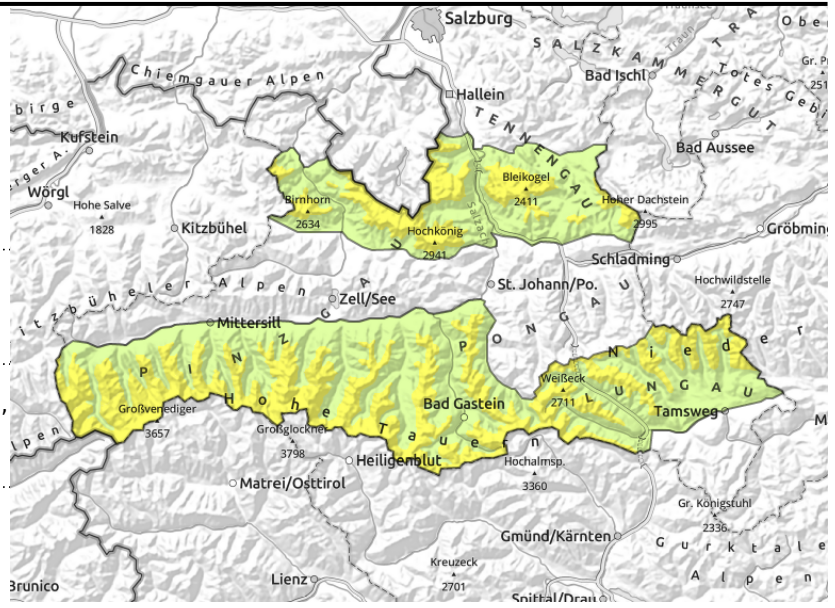
5

very high

**Expositions**



**Großvenedigergruppe Alpenhauptkamm, Glocknergruppe Alpenhauptkamm, Goldberggruppe Alpenhauptkamm, Ankogelgruppe, Muhr, Großvenedigergruppe Nord, Glocknergruppe Nord, Goldberggruppe Nord, Steinernes Meer, Hochkönig, Hagengebirge, Göllstock, Loferer und Leoganger Steinberge, Tennengebirge, Gosaukamm, Niedere Tauern Süd**



2400 m



near to and distant from ridges, behind discontinuities



in steep grass-covered terrain which has not yet discharged

## Up above: fresh snowdrifts. Down below: gliding snow.

Avalanche danger above 2400 m is moderate, below that altitude danger is low.

Small-to-medium slabs can be triggered by 1 person on some slopes, esp. NW/N/E facing, above 2400 m. Danger zones increase with ascending altitude.

Below 2600 m there is latent danger of glide-snow avalanches, in isolated starting zones they can grow large.

### Snowpack structure

Snowdrift accumulations above 2400 m lie deposited atop soft layers, are trigger-prone. The snowpack up to 2000 m is thoroughly or superficially wet. The snowpack cannot achieve much outgoing longwave nocturnal radiation, it softens rapidly in the daytime hours. At high altitudes it is compact, with a wind crust mostly capable of bearing loads on the surface.

### Weather

During nocturnal hours, intermittent rainfall will pass through, snow showers above 1700 m. At high altitudes, up to 5 cm of fresh snow expected by morning. Winds from SW/NW directions will be light to moderate. At 2000 m: 0 degrees; at 3000m: -3 degrees.

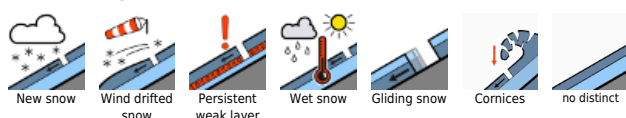
On Thursday, frequent sunshine after residual clouds withdraw, and good visibility. As of midday, heavy cloud cover will move in, isolated rain and snow showers in afternoon, snowfall level at 2100 m. The moderate winds will reach 30 km/hr, shift from SW to W to NW. At 2000 m: 1-6 degrees; at 3000 m: -6 to -3 degrees. At high altitudes in the Northern Alps, 2-7 cm of fresh snow is possible by evening.

### Outlook

Due to warmth and rain penetration of the snowpack, wet-snow and gliding snow problems will intensify.

Translated by Jeffrey McCabe, [www.creativtrans.com](http://www.creativtrans.com)

#### Avalanche problems



#### Danger ratings



#### Expositions

