

## Fresh snowdrifts at high altitudes

	<p>Chiemgauer Alpen, Heutal, Reiteralpe, Kitzbüheler Alpen, Glemmtal, Dientner Grasberge, Pongauer Grasberge, Oberpinzgauer Grasberge, Niedere Tauern Nord</p>	
	<p>Nockberge, Niedere Tauern Alpenhauptkamm</p>	
	<p>2400 m                  Großvenedigergruppe Alpenhauptkamm, Glocknergruppe Alpenhauptkamm, Goldberggruppe Alpenhauptkamm, Ankogelgruppe, Muhr, Großvenedigergruppe Nord, Glocknergruppe Nord, Goldberggruppe Nord, Steinernes Meer, Hochkönig, Hagengebirge, Göllstock, Loferer und Leoganger Steinberge, Tennengebirge, Gosaukamm, Niedere Tauern Süd</p>	

### Avalanche problems



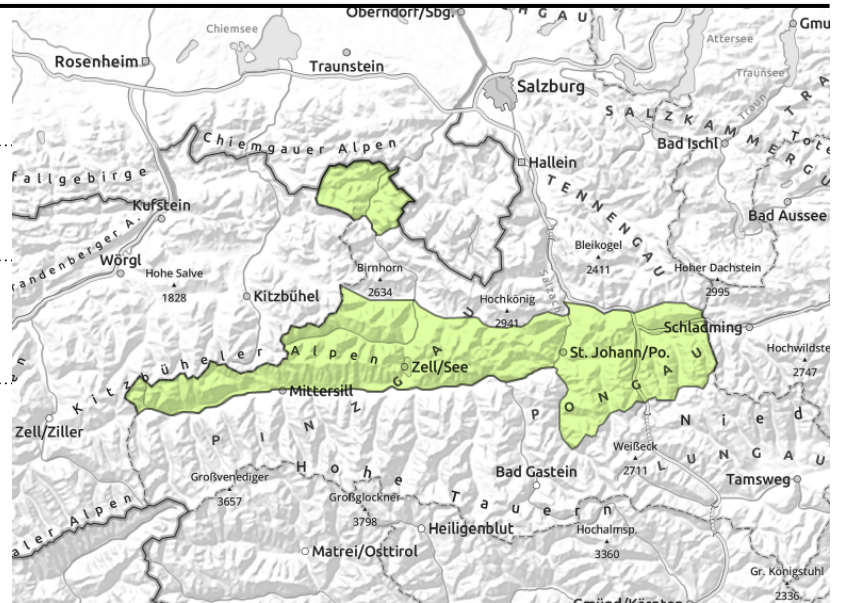
### Danger ratings



### Expositions



**Chiemgauer Alpen, Heutal, Reiteralpe, Kitzbüheler Alpen, Glemmtal, Dientner Grasberge, Pongauer Grasberge, Oberpinzgauer Grasberge, Niedere Tauern Nord**



in isolated cases



in isolated cases, above 2200 m

**Isolated glide-snow avalanches, shallow-snowdrift problem at high altitude**

Avalanche danger is low.

There is a latent gliding snow problem in all aspects at high altitudes. In high starting zones where there is a lot of snow, avalanches can reach medium sized in isolated cases.

Above 2200 m, small snowdrift accumulations are prone to triggering. Danger of falling outweighs that of snow masses.

**Snowpack structure**

The snowpack is compact and widespread moist-to-wet at least superficially, during the nocturnal hours above 2200 m a melt-freeze crust capable of bearing loads forms, beneath it on shady slopes are breakable crusts. Firn snow can form during the course of the day.

**Weather**

Skies will clear during the night, mostly scattered clouds or cloudless. More clouds will move in during early morning. Winds will slacken off (moderate-to-strong). At 2000 m: 0 degrees; at 3000 m: -7 degrees.

Wednesday will be cloudy. In morning the peaks will be in the clear, later on shrouded. Winds will be mostly light to moderate, mostly from the SW. At 2000 m: 1 degree.

On Wednesday night, heavily overcast skies, minor precipitation is possible.

**Outlook**

As temperatures rise the wet-snow and gliding snow problems will intensify slightly

**Avalanche problems**



**Danger ratings**



**Expositions**



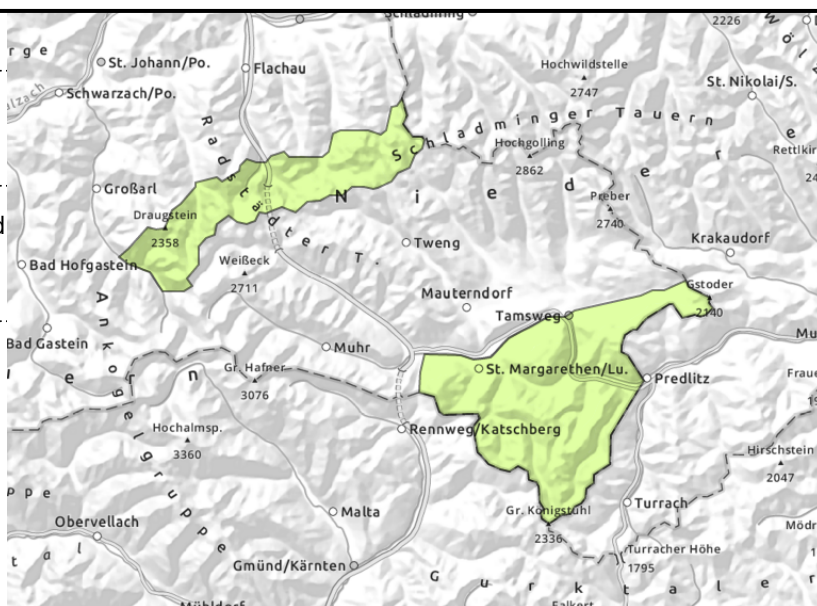
**Nockberge, Niedere Tauern Alpenhauptkamm**



isolated, in steep grass-covered terrain which has not yet discharged



near ridges, small, above 2200 m



**Isolated glide-snow avalanches. Minor snowdrift problem at high altitudes.**

Avalanche danger is low.

Glide-snow avalanches can release in all aspects and altitudes, reach medium size.

Above 2200 m, small snowdrift accumulations are prone to triggering. Danger of falling outweighs that of snow masses.

**Snowpack structure**

Fresh snowdrifts above 2400 m are trigger-prone, lie deposited atop soft layers. During the night a melt-freeze crust forms which is capable of bearing loads, below it are breakable crusts. Firn snow can form during the daytime.

**Weather**

Skies will clear during the night, mostly scattered clouds or cloudless. More clouds will move in during early morning. Winds will slacken off (moderate-to-strong). At 2000 m: 0 degrees; at 3000 m: -7 degrees.

Wednesday will be cloudy. In morning the peaks will be in the clear, later on shrouded. Winds will be mostly light to moderate, mostly from the SW. At 2000 m: 1 degree.

On Wednesday night, heavily overcast skies, minor precipitation is possible.

**Outlook**

As temperatures rise the wet-snow and gliding snow problems will intensify slightly

**Avalanche problems**



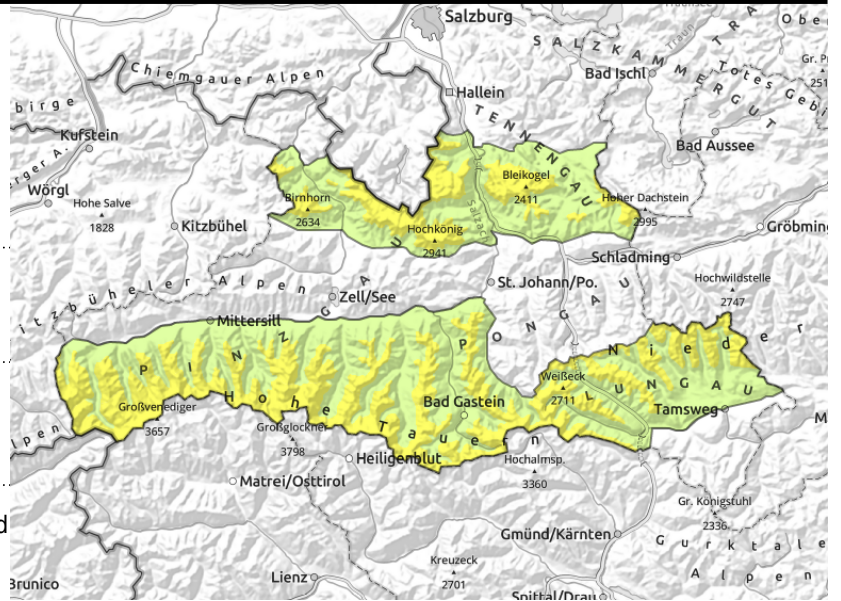
**Danger ratings**



**Expositions**



**Großvenedigergruppe Alpenhauptkamm, Glocknergruppe Alpenhauptkamm, Goldberggruppe Alpenhauptkamm, Ankogelgruppe, Muhr, Großvenedigergruppe Nord, Glocknergruppe Nord, Goldberggruppe Nord, Steinernes Meer, Hochkönig, Hagengebirge, Göllstock, Loferer und Leoganger Steinberge, Tennengebirge, Gosaukamm, Niedere Tauern Süd**



near ridges, small, above 2200 m, behind discontinuities

isolated, in steep grass-covered terrain which has not yet discharged

## Up above: fresh snowdrifts. Down below: gliding snow.

Avalanche danger above 2400 m is MODERATE, below that altitude danger is low. Small-to-medium slabs can be triggered by 1 person on some slopes, esp. NW/N/E facing, above 2400 m. Danger zones increase with ascending altitude. Below 2600 m there is latent danger of glide-snow avalanches, in isolated starting zones they can grow large.

### Snowpack structure

Fresh snowdrifts above 2400 m are trigger-prone, lie deposited atop soft layers. During the night a melt-freeze crust forms which is capable of bearing loads, below it are breakable crusts. Firn snow can form during the daytime.

### Weather

Skies will clear during the night, mostly scattered clouds or cloudless. More clouds will move in during early morning. Winds will slacken off (moderate-to-strong). At 2000 m: 0 degrees; at 3000 m: -7 degrees. Wednesday will be cloudy. In morning the peaks will be in the clear, later on shrouded. Winds will be mostly light to moderate, mostly from the SW. At 2000 m: 1 degree. On Wednesday night, heavily overcast skies, minor precipitation is possible.

### Outlook

As temperatures rise the wet-snow and gliding snow problems will intensify.

Translated by Jeffrey McCabe, [www.creativtrans.com](http://www.creativtrans.com)

#### Avalanche problems



#### Danger ratings



#### Expositions

