

## Fresh snowdrifts on Main Alpine Ridge

1	Chiemgauer Alpen, Heutal, Reiteralpe, Kitzbüheler Alpen, Glemmtal, Dientner Grasberge, Pongauer Grasberge	
2	Steinernes Meer, Hochkönig, Hagengebirge, Göllstock, Tennengebirge, Gosaukamm, Oberpinzgauer Grasberge, Großvenedigergruppe Nord, Glocknergruppe Nord, Goldberggruppe Nord, Niedere Tauern Nord, Niedere Tauern Alpenhauptkamm, Niedere Tauern Süd, Nockberge, Loferer und Leoganger Steinberge	
3 2	Großvenedigergruppe Alpenhauptkamm, Glocknergruppe Alpenhauptkamm, Goldberggruppe Alpenhauptkamm, Ankogelgruppe, Muhr	

### Avalanche problems



### Danger ratings



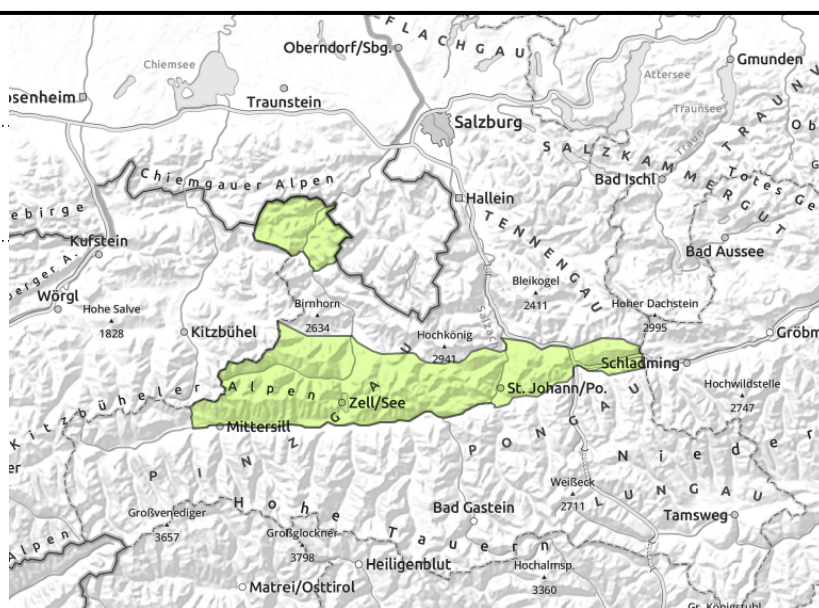
### Expositions



**Chiemgauer Alpen, Heutal, Reiteralpe, Kitzbüheler Alpen, Glemmtal, Dientner Grasberge, Pongauer Grasberge**



in isolated cases



## Only a little snow on the ground

Avalanche danger is low.

In steep grass-covered terrain which has not yet discharged, isolated glide-snow avalanches can trigger. Also small loose-snow avalanches are possible in case of sunshine (from the fresh fallen snow).

### Snowpack structure

The snowpack is compact and thoroughly moist-to-wet, with a few cm of fresh snow on top.

### Weather

Heavy cloud cover at night, some snowfall before midnight, dry later on. Brisk W/NW winds at high altitudes.

On Tuesday, reduced visibility. Isolated brief snow showers are possible. In afternoon, more sunshine. The W/NW winds will be moderate to strong (40 km/hr). At 2000 m: -4 to 0 degrees.

### Outlook

Avalanche danger levels are not expected to change significantly.

#### Avalanche problems



New snow



Wind drifted snow



Persistent weak layer



Wet snow



Gliding snow



Cornices



no distinct

#### Danger ratings



1

low



2

moderate



3

considerable



4

high



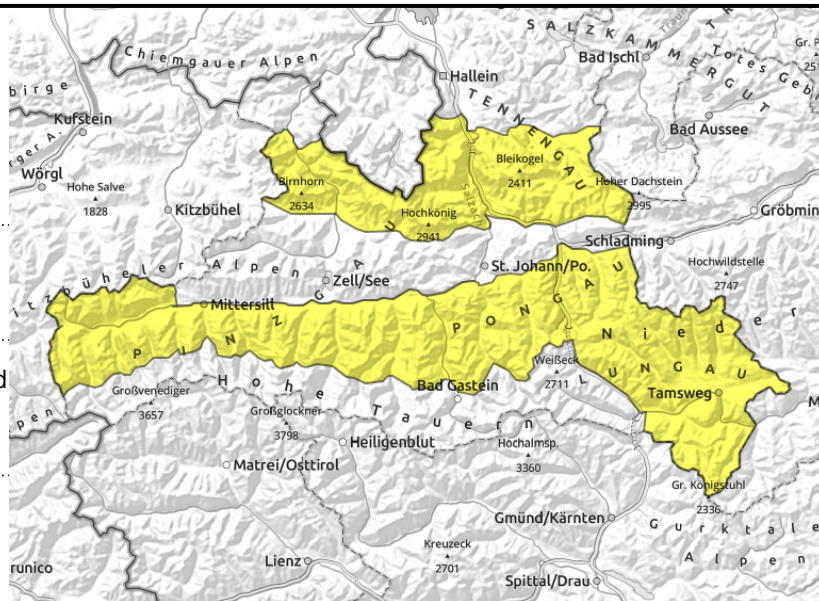
5

very high

#### Expositions



**Steinernes Meer, Hochkönig, Hagengebirge, Göllstock, Tennengebirge, Gosaukamm, Oberpinzgauer Grasberge, Großvenedigergruppe Nord, Glocknergruppe Nord, Goldberggruppe Nord, Niedere Tauern Nord, Niedere Tauern Alpenhauptkamm, Niedere Tauern Süd, Nockberge, Loferer und Leoganger Steinberge**



isolated, in steep grass-covered terrain which has not yet discharged



near ridges, small, above 2200 m

## Moderate gliding snow problem, some fresh drifts at high altitude

Avalanche danger is moderate.

Glide-snow avalanches can release in isolated cases, reach medium size.

At high altitudes small-to-medium slab avalanches can be triggered by 1 person, esp. on N/E facing slopes.

Recent fresh fallen snow can release small loose-snow avalanches in case of sunshine.

### Snowpack structure

The snowpack is compact and thoroughly (or superficially) moist, with a few cm of fresh snow on top.

### Weather

Heavy cloud cover at night, some snowfall before midnight, dry later on. Brisk W/NW winds at high altitudes.

On Tuesday, reduced visibility. Isolated brief snow showers are possible. In afternoon, more sunshine. The W/NW winds will be moderate to strong (40 km/hr). At 2000 m: -4 to 0 degrees; at 3000 m -9 degrees.

### Outlook

Avalanche danger levels are not expected to change significantly.

#### Avalanche problems



New snow



Wind drifted snow



Persistent weak layer



Wet snow



Gliding snow



Cornices



no distinct

#### Danger ratings



1 low



2 moderate



3 considerable



4 high



5 very high

#### Expositions



**Großvenedigergruppe Alpenhauptkamm,  
 Glocknergruppe Alpenhauptkamm, Goldberggruppe  
 Alpenhauptkamm, Ankogelgruppe, Muhr**



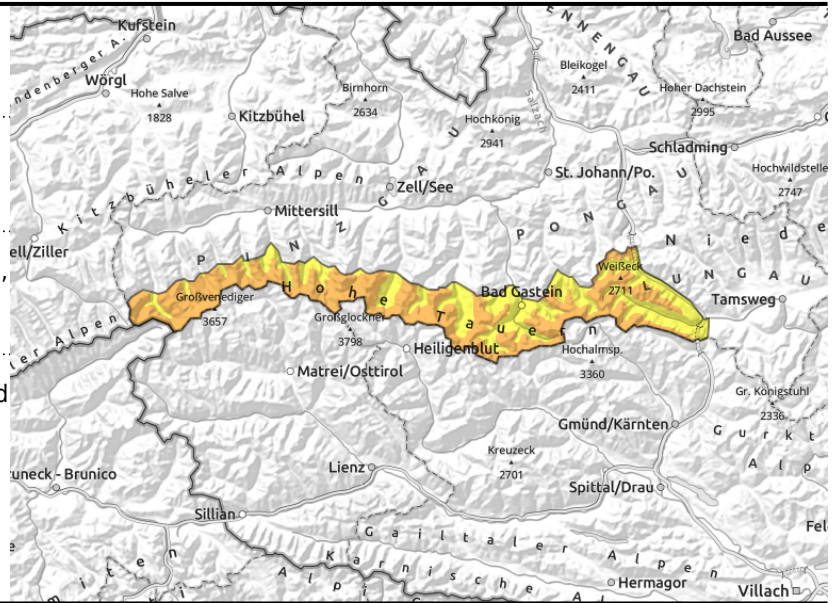
2500 m



near to and distant from ridges,  
 often blanketed



isolated, in steep grass-covered  
 terrain which has not yet  
 discharged



**Up above: fresh fallen snow. Down below: gliding snow.**

Avalanche danger above 2500 m is **CONSIDERABLE**, below that altitude danger is **MODERATE**.  
 Small-to-medium slabs can be triggered by 1 person on some slopes, esp. N/E facing, above 2500 m  
 Glide-snow avalanches can release in isolated cases on slopes which have not yet discharged, can  
 grow to large size where snowfall has been heavy.  
 In case of sunshine, small-to-medium loose-snow avalanches are possible.

**Snowpack structure**

Atop a compact and moist snowpack, 20-40 cm of fresh snow lies deposited, locally more, much  
 affected by winds (initially southerly, then northwesterly). Weak layer for a slab: the loose snow atop  
 the latest crust or faceted crystals beneath the latest crust. More deeply embedded weak layers are  
 unlikely to trigger.

**Weather**

Heavy cloud cover at night, some snowfall before midnight, dry later on. Brisk W/NW winds at high  
 altitudes.  
 On Tuesday, reduced visibility. Isolated brief snow showers are possible. In afternoon, more sunshine.  
 The W/NW winds will be moderate to strong (40 km/hr). At 2000 m: -4 to 0 degrees; at 3000 m -9  
 degrees.

**Outlook**

On Wednesday, fresh snowdrifts can be generated on north-facing slopes due to moderate southerly  
 foehn winds.

Translated by Jeffrey McCabe, [www.creativtrans.com](http://www.creativtrans.com)

**Avalanche problems**



**Danger ratings**



**Expositions**

