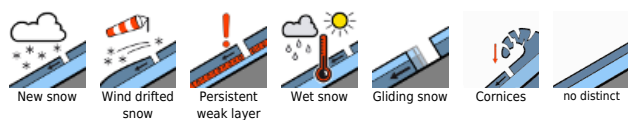


## Heavy precipitation in southern regions

	Nockberge, Niedere Tauern Süd, Niedere Tauern Alpenhauptkamm, Niedere Tauern Nord	
	Ankogelgruppe, Muhr, Goldberggruppe Alpenhauptkamm, Glocknergruppe Alpenhauptkamm, Großvenedigergruppe Alpenhauptkamm, Großvenedigergruppe Nord, Glocknergruppe Nord, Goldberggruppe Nord	
	Tennengebirge, Gosaukamm, Steinernes Meer, Hochkönig, Hagengebirge, Göllstock, Loferer und Leoganger Steinberge, Dientner Grasberge, Kitzbüheler Alpen, Glemmtal, Oberpinzgauer Grasberge, Chiemgauer Alpen, Heutal, Reiteralpe, Pongauer Grasberge	

### Avalanche problems



### Danger ratings



### Expositions



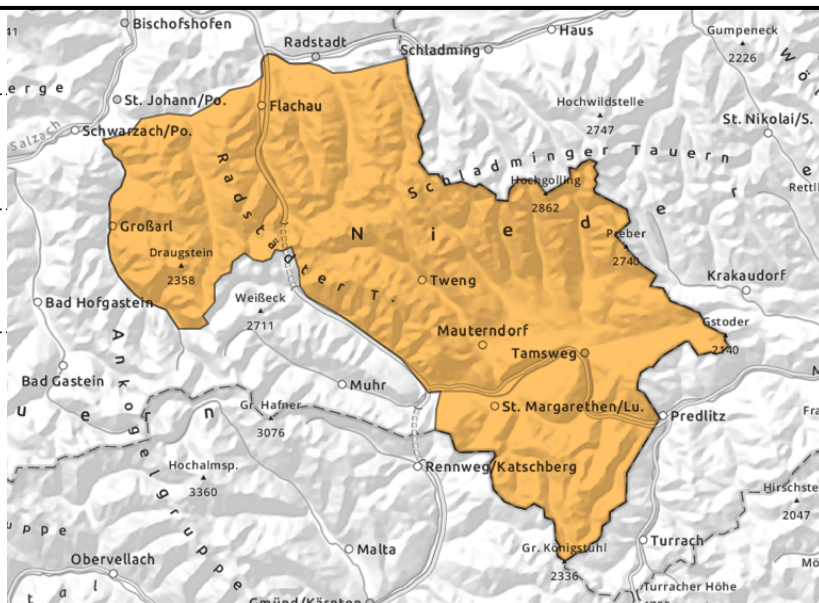
**Nockberge, Niedere Tauern Süd, Niedere Tauern Alpenhauptkamm, Niedere Tauern Nord**



heavy rainfall



with rain, on steep grass-covered stopes



**Considerable wet-snow problem**

Avalanche danger is CONSIDERABLE.

Intensive rainfall in places can trigger wet-snow avalanches (loose and slabs) naturally in steep terrain in all aspects. In high starting zones, avalanches can grow to large size, mostly small-to-medium releases. Also glide-snow avalanches.

**Snowpack structure**

The snowpack is compact and thoroughly moist-to-wet.

**Weather**

Very windy in the nighttime hours, mostly cloudy, intermittent rainfall.

On Easter Monday, poor visibility, rainfall to over 2000 m, often heavy. In afternoon the snowfall level will drop, by evening to 1500 m, a few cm of fresh snow is expected in afternoon. Winds will be light, slackening off further. At 2000 m: dropping from +5 to 0 degrees by evening.

**Outlook**

Avalanche danger levels will recede.

**Avalanche problems**



**Danger ratings**



**Expositions**



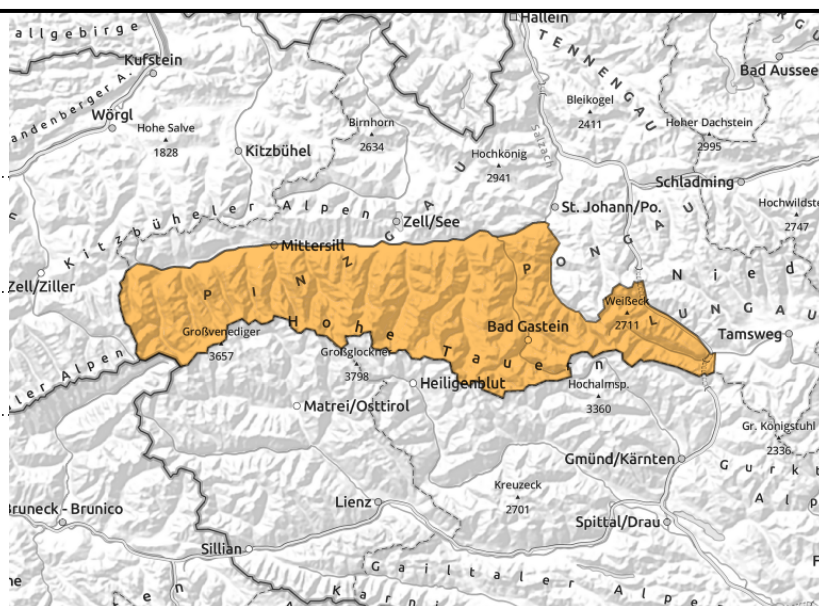
**Ankogelgruppe, Muhr, Goldberggruppe  
 Alpenhauptkamm, Glocknergruppe  
 Alpenhauptkamm, Großvenedigergruppe  
 Alpenhauptkamm, Großvenedigergruppe Nord,  
 Glocknergruppe Nord, Goldberggruppe Nord**



heavy rainfall, snowfall level at 2200 m



lots of fresh snow plus wind at high altitudes



## Wet snow down below, wet-snow problem up above

Avalanche danger is **CONSIDERABLE**.

Intensive rainfall in places can trigger wet-snow avalanches (loose and slabs) naturally in steep terrain in all aspects. In high starting zones, avalanches can grow to large size, mostly small-to-medium releases. Also glide-snow avalanches.

Above 2200 m, small-to-medium loose-snow avalanches and slabs can trigger naturally in all aspects relatively easily.

### Snowpack structure

The snowpack is compact and thoroughly moist-to-wet. Embedded weak layers are mostly near the surface.

### Weather

Very windy in the nighttime hours, mostly cloudy, intermittent rainfall.

On Easter Monday, poor visibility, rainfall to over 2000 m, often heavy. In afternoon the snowfall level will drop, by evening to 1500 m, a few cm of fresh snow is expected in afternoon. Winds will be light, slackening off further. At 2000 m: dropping from +5 to 0 degrees by evening.

### Outlook

Avalanche danger levels will recede

#### Avalanche problems



New snow



Wind drifted snow



Persistent weak layer



Wet snow



Gliding snow



Cornices



no distinct

#### Danger ratings



1 low



2 moderate



3 considerable



4 high

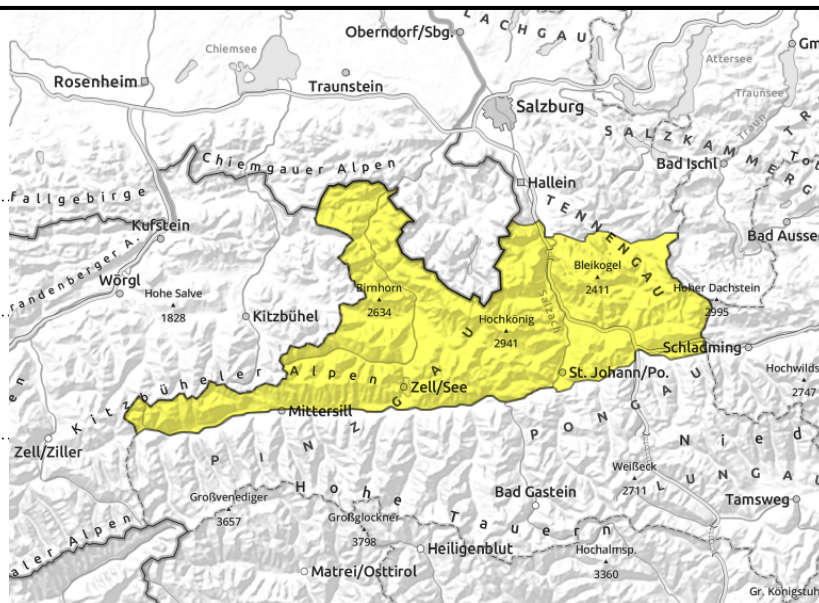


5 very high

#### Expositions



**Tennengebirge, Gosaukamm, Steinernes Meer, Hochkönig, Hagengebirge, Göllstock, Loferer und Leoganger Steinberge, Dientner Grasberge, Kitzbüheler Alpen, Glemmtal, Oberpinzgauer Grasberge, Chiemgauer Alpen, Heutal, Reiteralpe, Pongauer Grasberge**



with the rain



some fresh snowdrifts at high altitudes

## Moderate wet-snow problem

Avalanche danger is moderate.

Due to rainfall, small-to-medium wet-snow avalanches can trigger in all aspects. Also glide-snow avalanches are increasingly possible.

At high altitudes, fresh thin snowdrift accumulations will be generated which can often trigger a small slab with minimum additional loading, most danger zones on north and east-facing slopes.

## Snowpack structure

The snowpack is compact and thoroughly moist-to-wet.

## Weather

Very windy and mild in the nighttime hours.

On Easter Monday, poor visibility, rainfall to over 2000 m, often heavy. In afternoon the snowfall level will drop, by evening to 1500 m, a few cm of fresh snow is expected in afternoon. Winds will be light, slackening off further. At 2000 m: dropping from +7 to -2 degrees by evening; snowfall level dropping from nearly 3000 m in early morning to 1400 m in evening.

## Outlook

Avalanche danger levels will recede, the snowdrift problem will persist.

Translated by Jeffrey McCabe, [www.creativtrans.com](http://www.creativtrans.com)

### Avalanche problems



New snow



Wind drifted snow



Persistent weak layer



Wet snow



Gliding snow



Cornices



no distinct

### Danger ratings



1

low



2

moderate



3

considerable



4

high



5

very high

### Expositions

