

Foehn storm, moderate gliding snow problem

1	Osterhorngruppe, Gamsfeldgruppe, Untersbergstock, Chiemgauer Alpen, Heutal, Reiteralpe, Pongauer Grasberge	
2	Kitzbüheler Alpen, Glemmtal, Dientner Grasberge, Oberpinzgauer Grasberge, Niedere Tauern Nord, Niedere Tauern Alpenhauptkamm, Niedere Tauern Süd, Nockberge, Tennengebirge, Gosaukamm, Steinernes Meer, Hochkönig, Hagengebirge, Göllstock, Loferer und Leoganger Steinberge	
2	Ankogelgruppe, Muhr, Goldberggruppe Alpenhauptkamm, Goldberggruppe Nord, Glocknergruppe Nord, Glocknergruppe Alpenhauptkamm, Großvenedigergruppe Alpenhauptkamm, Großvenedigergruppe Nord	

Avalanche problems



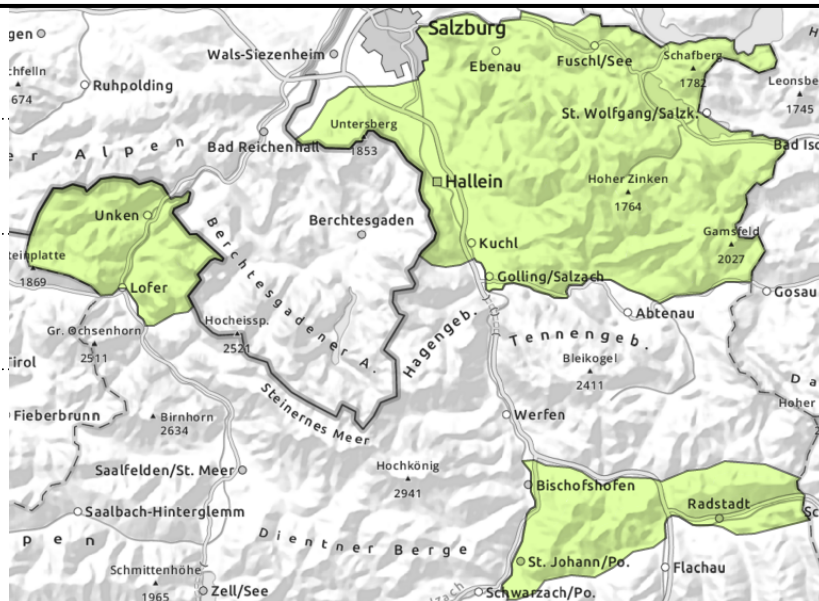
Danger ratings



Expositions



Osterhorngruppe, Gamsfeldgruppe,
 Untersbergstock, Chiemgauer Alpen, Heutal,
 Reiteralpe, Pongauer Grasberge



in steep grass-covered terrain,
 possible at any time of day or
 night



as warmth increases

Snowpack is mostly wet

Avalanche danger is low.

Only few glide-snow avalanches are possible. In high starting zones medium sized releases are possible. Avoid zones below glide cracks.

Small wet loose-snow avalanches are possible during the course of the day.

Snowpack structure

The snowpack is well settled and sticky-to-wet over widespread areas.

Weather

Very mild night. Southerly foehn wind blowing. Variably cloudy.

On Sunday, good visibility. Southerly foehn winds will rage. At 2000 m: +7 degrees.

Outlook

Avalanche danger levels are not expected to change significantly.

Avalanche problems



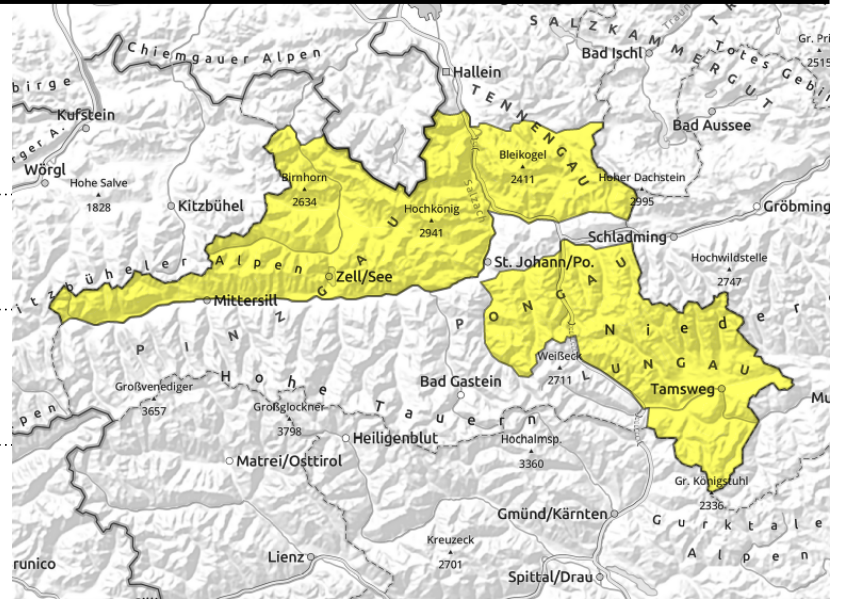
Danger ratings



Expositions



Kitzbüheler Alpen, Glemmtal, Dientner Grasberge, Oberpinzgauer Grasberge, Niedere Tauern Nord, Niedere Tauern Alpenhauptkamm, Niedere Tauern Süd, Nockberge, Tennengebirge, Gosaukamm, Steinernes Meer, Hochkönig, Hagengebirge, Göllstock, Loferer und Leoganger Steinberge



in steep smooth grass-covered terrain, possible at any time of day or night



as warmth increases or rain sets in

Moderate gliding snow problem

Avalanche danger is moderate.

Gliding snow activity will increase. Avalanches in high-altitude starting zones can be medium-sized. Avoid zones below glide cracks.

Small loose-snow avalanches can be expected during the course of the day.

Snowpack structure

The snowpack is compact and superficially moist over widespread areas. Sahara dust has painted the surface, which reinforces the melting process.

Weather

Mild night, strong southerly foehn, variably cloudy.

In morning, clouds and sunshine will alternate north of the Tauern. In afternoon, clouds will be heavier, some rainfall (snowfall level 2300 m). Northern Alps likeliest to stay dry. In Lungau, compact cloud cover. Southerly winds will be strong to stormy, speeds of 100 km/hr. At 2000 m: from 0 rising to 5 degrees; at 3000 m: from -5 to -1 degree.

Outlook

The foehn will terminate on Monday, temperatures drop, the wet-snow problem recede. Fresh snowdrifts could be generated at high altitudes.

Avalanche problems



New snow



Wind drifted snow



Persistent weak layer



Wet snow



Gliding snow



Cornices



no distinct

Danger ratings



1

low



2

moderate



3

considerable



4

high



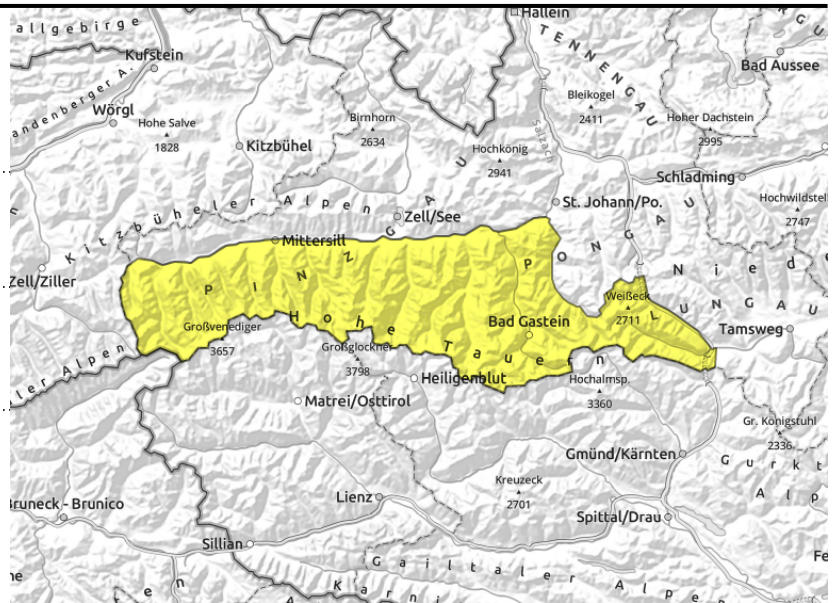
5

very high

Expositions



Ankogelgruppe, Muhr, Goldberggruppe
 Alpenhauptkamm, Goldberggruppe Nord,
 Glocknergruppe Nord, Glocknergruppe
 Alpenhauptkamm, Großvenedigergruppe
 Alpenhauptkamm, Großvenedigergruppe Nord



in steep grass-covered terrain



distant from ridgelines, gullies,
 steep bowls

Avoid fresh snowdrift accumulations and zones below glide cracks

Avalanche danger is moderate.

Snowdrift accumulations can be triggered by large additional loading in places above 2400 m and reach medium size. Caution near steep wind-loaded gullies and bowls on W/N/E facing slopes.

Gliding snow activity will increase below 2600 m. Avalanches in high-altitude starting zones can be medium-sized. Avoid zones below glide cracks.

Small loose-snow avalanches can be expected during the course of the day.

Snowpack structure

Foehn winds are doing their work on the snowpack, it is highly irregular, often hard, at low altitudes moist-to-wet due to the warmth. Weak layers occur mostly in the uppermost part of the snowpack, more deeply embedded layers of faceted crystals near crusts are unlikely to trigger.

Weather

Very mild night. Southerly foehn wind blowing. Variably cloudy.

In morning, clouds and sunshine will alternate. In afternoon, clouds will be heavier, some rainfall (snowfall level 2300 m). Northern Alps likeliest to stay dry. On the Main Alpine Ridge, compact cloud cover. Southerly winds will be strong to stormy, speeds of 100 km/hr. At 2000 m: from 0 rising to 5 degrees; at 3000 m: from -5 to -1 degree.

Outlook

The foehn will terminate on Monday, temperatures drop, the wet-snow problem recede. Fresh snowdrifts could be generated at high altitudes.

Translated by Jeffrey McCabe, www.creativtrans.com

Avalanche problems



Danger ratings



Expositions

