

Foehn storm, moderate gliding snow problem

1	Osterhorngruppe, Gamsfeldgruppe, Untersbergstock, Chiemgauer Alpen, Heutal, Reiteralpe, Pongauer Grasberge	
2	Kitzbüheler Alpen, Glemmtal, Dientner Grasberge, Oberpinzgauer Grasberge, Niedere Tauern Nord, Niedere Tauern Alpenhauptkamm, Niedere Tauern Süd, Nockberge, Tennengebirge, Gosaukamm	
2	Ankogelgruppe, Muhr, Goldberggruppe Alpenhauptkamm, Goldberggruppe Nord, Glocknergruppe Nord, Glocknergruppe Alpenhauptkamm, Großvenedigergruppe Alpenhauptkamm, Großvenedigergruppe Nord, Loferer und Leoganger Steinberge, Steinernes Meer, Hochkönig, Hagengebirge, Göllstock	

Avalanche problems



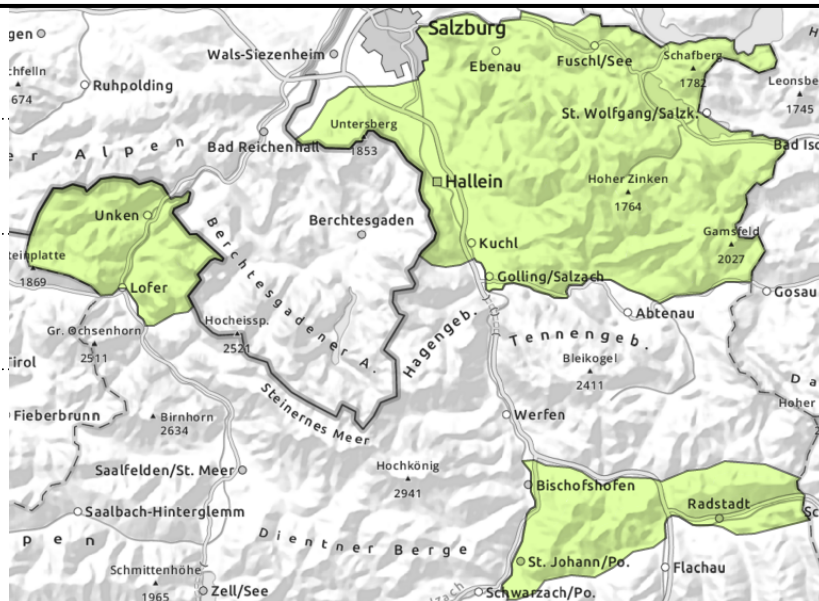
Danger ratings



Expositions



**Osterhorngruppe, Gamsfeldgruppe,
 Untersbergstock, Chiemgauer Alpen, Heutal,
 Reiteralpe, Pongauer Grasberge**



in steep grass-covered terrain,
 possible at any time of day or
 night



as warmth increases

Isolated glide-snow avalanches

Avalanche danger is low.

Only few glide-snow avalanches are possible. In high starting zones medium sized releases are possible. Avoid zones below glide cracks.

Small wet loose-snow avalanches are possible during the course of the day.

Snowpack structure

The snowpack is well settled and sticky-to-wet over widespread areas.

Weather

During the night, cloud cover but these will soon disperse. Mild.

On Saturday, good visibility, strong southerly foehn wind. At 2000 m: +7 degrees.

Outlook

Avalanche danger levels are not expected to change significantly.

Avalanche problems



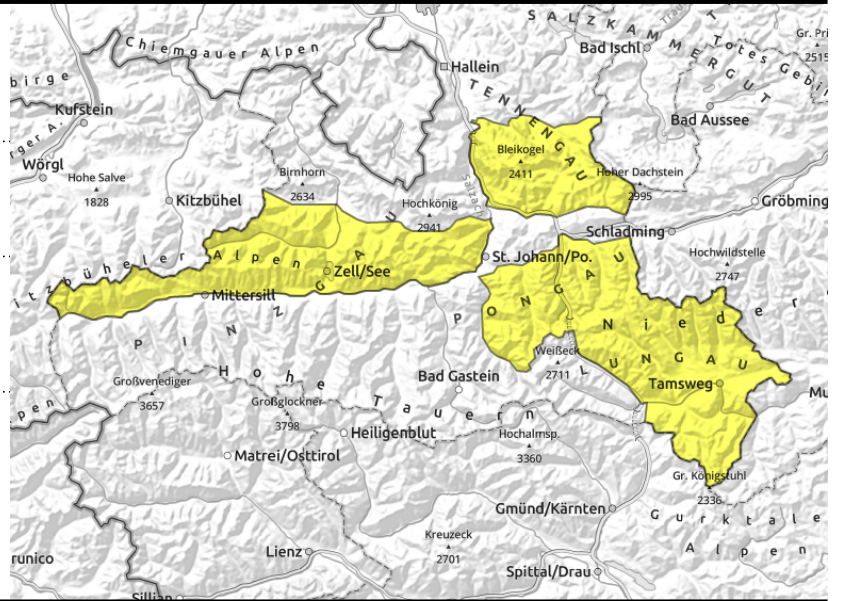
Danger ratings



Expositions



Kitzbüheler Alpen, Glemmtal, Dientner Grasberge, Oberpinzgauer Grasberge, Niedere Tauern Nord, Niedere Tauern Alpenhauptkamm, Niedere Tauern Süd, Nockberge, Tennengebirge, Gosaukamm



in steep smooth grass-covered terrain, possible at any time of day or night



as warmth increases

Moderate gliding snow problem

Avalanche danger is moderate.

Gliding snow activity will increase. Avalanches in high-altitude starting zones can be medium-sized. Avoid zones below glide cracks.

Small loose-snow avalanches can be expected during the course of the day.

Snowpack structure

The snowpack is compact and superficially moist over widespread areas.

Weather

During the night, cloud cover but these will soon disperse. Foehn winds will remain stormy. Zero-degree level at 2500 m.

On Saturday, good visibility (exception: Lungau), strong southerly foehn wind (gusts of 80-100 km/hr). At 2000 m: +2-7 degrees, warmer in the north.

Outlook

Avalanche danger levels are not expected to change significantly. Mildness will continue, so will the foehn, until Monday. Then, cooler temperatures and fresh snowfall.

Avalanche problems



New snow



Wind drifted snow



Persistent weak layer



Wet snow



Gliding snow



Cornices



no distinct

Danger ratings



1
low



2
moderate



3
considerable



4
high

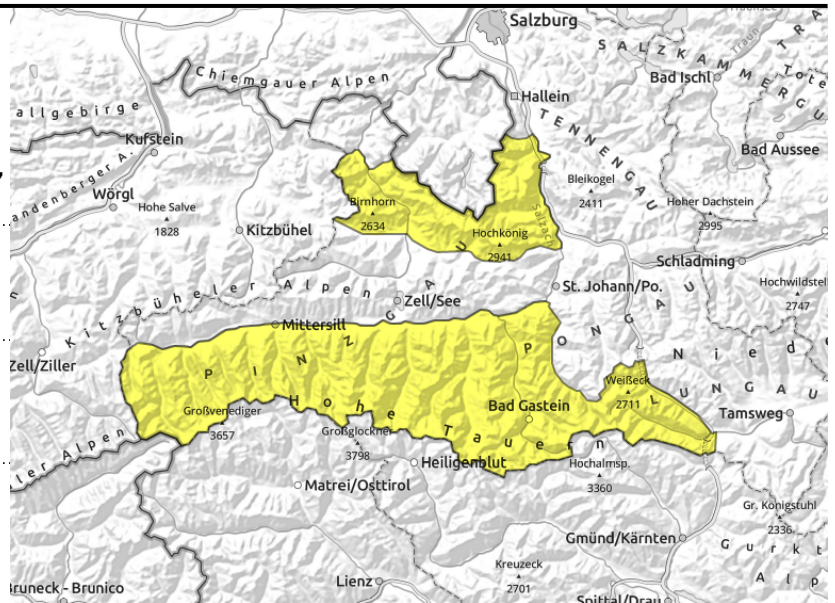


5
very high

Expositions



**Ankogelgruppe, Muhr, Goldberggruppe
 Alpenhauptkamm, Goldberggruppe Nord,
 Glocknergruppe Nord, Glocknergruppe
 Alpenhauptkamm, Großvenedigergruppe
 Alpenhauptkamm, Großvenedigergruppe Nord,
 Loferer und Leoganger Steinberge, Steinernes Meer,
 Hochkönig, Hagengebirge, Göllstock**



in steep grass-covered terrain



near to and distant from
 ridgelines, gullies, steep bowls

Avoid fresh snowdrift accumulations and zones below glide cracks

Avalanche danger is moderate.

Snowdrift accumulations can be triggered by large additional loading in places above 2400 m and reach medium size. Caution near steep wind-loaded gullies and bowls on W/N/E facing slopes.

Gliding snow activity will increase below 2600 m. Avalanches in high-altitude starting zones can be medium-sized. Avoid zones below glide cracks.

Small loose-snow avalanches can be expected during the course of the day.

Snowpack structure

Foehn winds are doing their work on the snowpack, it is highly irregular, often hard, at low altitudes moist-to-wet due to the warmth. Weak layers occur mostly in the uppermost part of the snowpack, more deeply embedded layers of faceted crystals near crusts are unlikely to trigger.

Weather

During the night, cloud cover but these will soon disperse. Foehn winds will remain stormy. Zero-degree level at 2500 m.

On Saturday, good visibility (exception: Lungau), strong southerly foehn wind (gusts of 120 km/hr in Tauern). At 2000 m: +4 degrees; at 3000 m: -3 degrees.

Outlook

Avalanche danger levels are not expected to change significantly. Mildness will continue, so will the foehn, until Monday. Then, cooler temperatures and fresh snowfall.

Translated by Jeffrey McCabe, www.creativtrans.com

Avalanche problems



New snow



Wind drifted snow



Persistent weak layer



Wet snow



Gliding snow



Cornices



no distinct

Danger ratings



1

low



2

moderate



3

considerable



4

high



5

very high

Expositions

