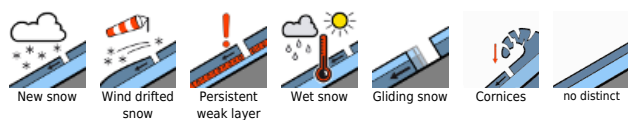


Fresh snowdrift accumulations generated by foehn wind

	<p>2000 m</p> <p>Großenedigergruppe Nord, Glocknergruppe Nord, Loferer und Leoganger Steinberge, Goldberggruppe Nord, Goldberggruppe Alpenhauptkamm, Glocknergruppe Alpenhauptkamm, Großenedigergruppe Alpenhauptkamm, Steinernes Meer, Hochkönig, Hagengebirge, Göllstock, Ankogelgruppe, Muhr, Tennengebirge, Gosaukamm, Niedere Tauern Süd, Oberpinzgauer Grasberge, Niedere Tauern Alpenhauptkamm, Niedere Tauern Nord</p>	
	<p>Osterhorngruppe, Gamsfeldgruppe, Untersbergstock, Kitzbüheler Alpen, Glemmtal, Dientner Grasberge, Pongauer Grasberge, Chiemgauer Alpen, Heutal, Reiteralpe</p>	
	<p>Nockberge</p>	

Avalanche problems



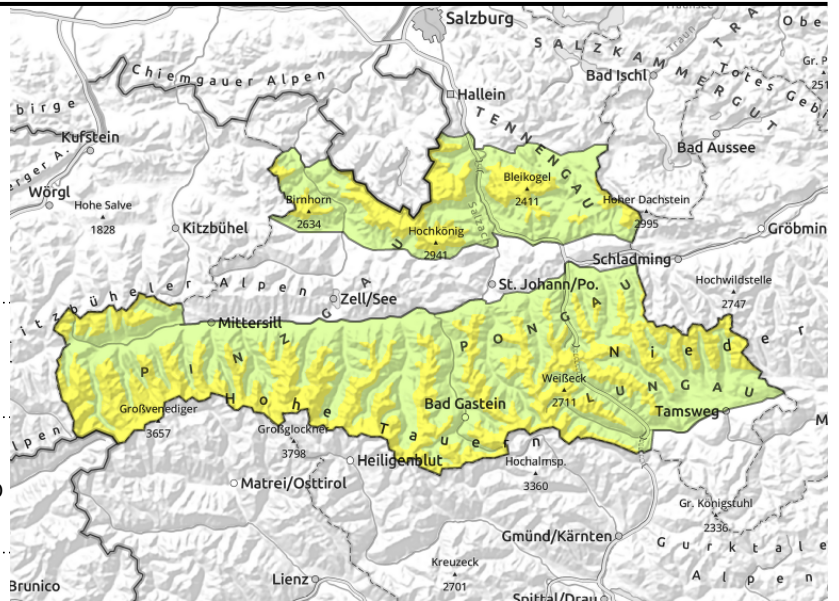
Danger ratings



Expositions



Großvenedigergruppe Nord, Glocknergruppe Nord, Loferer und Leoganger Steinberge, Goldberggruppe Nord, Goldberggruppe Alpenhauptkamm, Glocknergruppe Alpenhauptkamm, Großvenedigergruppe Alpenhauptkamm, Steinernes Meer, Hochkönig, Hagengebirge, Göllstock, Ankogelgruppe, Muhr, Tennengebirge, Gosaukamm, Niedere Tauern Süd, Oberpinzgauer Grasberge, Niedere Tauern Alpenhauptkamm, Niedere Tauern Nord



2000 m



distant from ridges, behind discontinuities, in gullies, steep bowls in all aspects



in steep grass-covered terrain

Fresh snowdrifts generated by foehn wind

Avalanche danger above 2000 m is moderate, below that altitude danger is low.

Fresh snowdrift accumulations can trigger by 1 person above 2000 m on steep shady slopes, releases often medium-sized. Danger zones will increase with ascending altitude, also distant from ridges, in steep gullies and bowls and behind discontinuities on W/N/E facing slopes.

Latent danger of glide-snow avalanches persists. In high starting zones, avalanches can reach medium-to-large size. Avoid zones below glide cracks.

During the course of the day, small loose-snow avalanches can be expected on extremely steep sunny slopes below 2000 m.

Snowpack structure

Weak layers occur esp. in near-surface layers of the snowpack. Due to southerly foehn winds, snowdrifts on shady slopes are often deposited atop soft layers where they are trigger-prone. More deeply embedded weak layers of faceted crystals near crusts are triggerable only in isolated cases. The fresh snowfall from the weekend was moistened on sunny slopes up to 2400 m, on shady slopes it is still loose up to intermediate altitudes.

Weather

Nighttime skies will be variably cloudy, on the Main Alpine Ridge and in the south mostly heavily overcast.

On Tuesday, good visibility, lots of sunshine, only high clouds, in afternoon diffuse light. Main Alpine Ridge and Lungau Nockberge will be in fog at times, light rainfall/snowfall is possible. Southerly winds will be brisk to strong, stormier in the foehn lanes (80 km/hr). At 2000 m: -5 to +6 degrees; at 3000 m: -4 to 0 degrees.

Outlook

Lots of wind, a little fresh snow: by Wednesday, slightly higher danger.

Avalanche problems



Danger ratings



Expositions



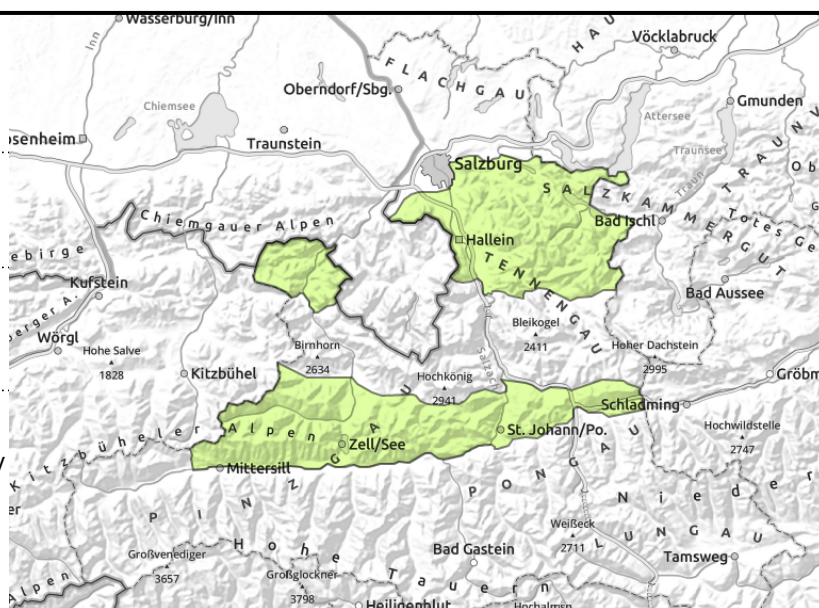
**Osterhorngruppe, Gamsfeldgruppe,
 Untersbergstock, Kitzbüheler Alpen, Glemmtal,
 Dientner Grasberge, Pongauer Grasberge,
 Chiemgauer Alpen, Heutal, Reiteralpe**



distant from ridges, in gullies,
 bowls, behind discontinuities



in extremely steep grass-
 covered terrain, possible at any
 time of day or night



Beware small snowdrift accumulations

Avalanche danger is low.

At high altitudes, fresh small snowdrift accumulations are often triggerable by 1 person, esp in gullies and bowls. The danger of falling outweighs that of snow masses.

Latent danger of glide-snow avalanches persists. In high starting zones, avalanches can reach medium-to-large size. Avoid zones below glide cracks.

During the course of the day, small loose-snow avalanches can be expected on extremely steep sunny slopes due to solar radiation.

Snowpack structure

Due to southerly foehn winds, snowdrifts on shady slopes are often deposited atop soft layers where they are trigger-prone.

The fresh snowfall from the weekend was moistened on sunny slopes up to 2400 m, on shady slopes it is still loose up to intermediate altitudes.

Weather

Nighttime skies will be variably cloudy.

On Tuesday, good visibility, lots of sunshine, only high clouds, in afternoon diffuse light. Southerly winds will be brisk to strong, stormier in the foehn lanes (80 km/hr). At 2000 m: -5 to +6 degrees.

Outlook

Avalanche danger levels are not expected to change significantly.

Avalanche problems



Danger ratings



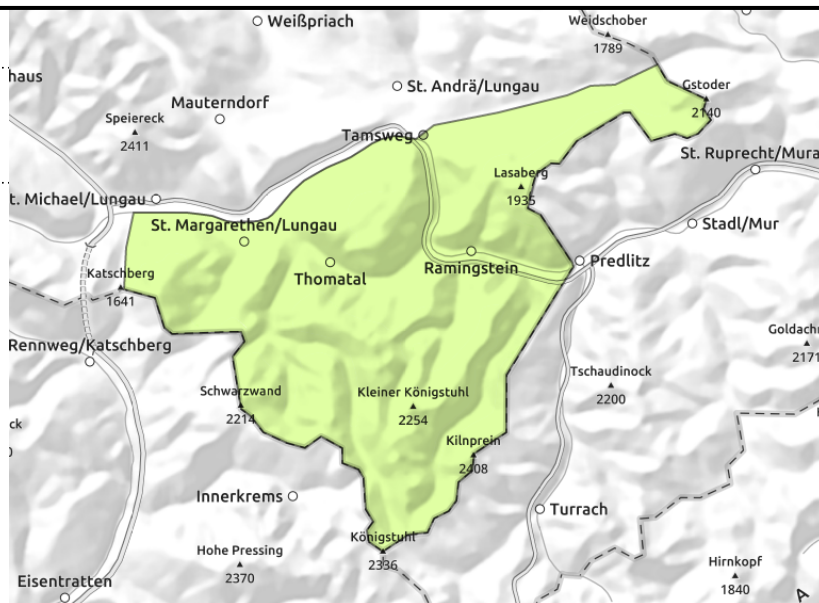
Expositions



Nockberge



distant from ridgelines,
thin/small snowdrift masses



Beware snow snowdrift accumulations

Avalanche danger is low.

Fresh small snowdrift accumulations are trigger-prone at high altitudes, can often be triggered by 1 person, esp. in steep gullies and bowls. Danger of taking a fall outweighs that of snow masses.

Snowpack structure

Due to southerly foehn winds, snowdrifts on shady slopes are often deposited atop soft layers where they are trigger-prone.

The fresh snowfall from the weekend was moistened on sunny slopes up to 2400 m, on shady slopes it is still loose up to intermediate altitudes.

Weather

Nighttime skies will be variably cloudy.

On Tuesday, good visibility, lots of sunshine, only high clouds, in afternoon diffuse light. Southerly winds will be brisk to strong, stormier in the foehn lanes (80 km/hr). At 2000 m: -5 to +6 degrees; at 3000 m: -4 to 0 degrees.

Outlook

Avalanche danger levels are not expected to change significantly.

Translated by Jeffrey McCabe, www.creativtrans.com

Avalanche problems



Danger ratings



Expositions

