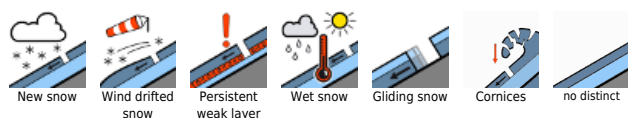


## Caution: freshly generated snowdrift accumulations are trigger-prone

	2200 m Großenedigergruppe Nord, Glocknergruppe Nord, Loferer und Leoganger Steinberge, Goldberggruppe Nord, Goldberggruppe Alpenhauptkamm, Glocknergruppe Alpenhauptkamm, Großenedigergruppe Alpenhauptkamm, Steinernes Meer, Hochkönig, Hagengebirge, Göllstock, Ankogelgruppe, Muhr, Tennengebirge, Gosaukamm, Niedere Tauern Süd, Oberpinzgauer Grasberge, Niedere Tauern Alpenhauptkamm, Chiemgauer Alpen, Heutal, Reiteralpe, Niedere Tauern Nord	
	Osterhorngruppe, Gamsfeldgruppe, Untersbergstock, Kitzbüheler Alpen, Glemmtal, Dientner Grasberge, Pongauer Grasberge	
	Nockberge	

### Avalanche problems



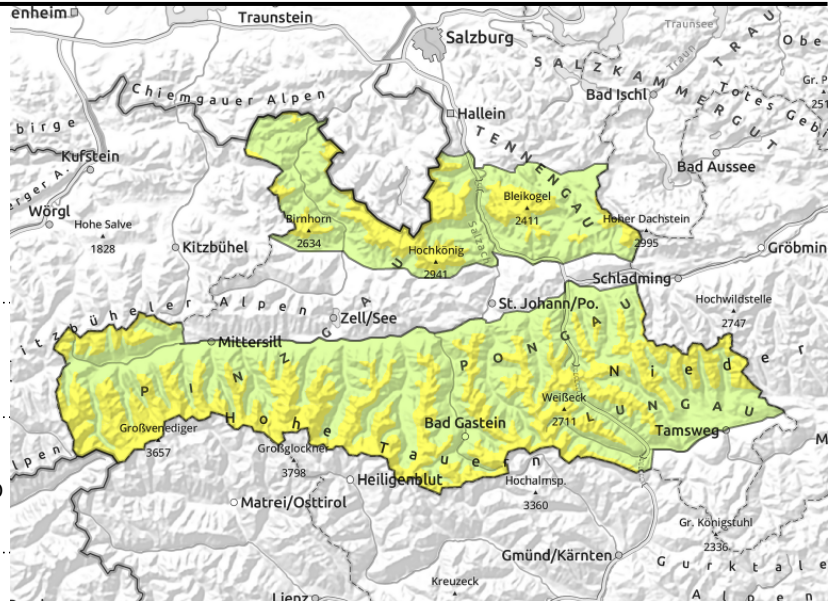
### Danger ratings



### Expositions



Großvenedigergruppe Nord, Glocknergruppe Nord, Loferer und Leoganger Steinberge, Goldberggruppe Nord, Goldberggruppe Alpenhauptkamm, Glocknergruppe Alpenhauptkamm, Steinernes Meer, Hochkönig, Hagengebirge, Göllstock, Ankogelgruppe, Muhr, Tennengebirge, Gosaukamm, Niedere Tauern Süd, Oberpinzgauer Grasberge, Niedere Tauern Alpenhauptkamm, Chiemgauer Alpen, Heutal, Reiteralpe, Niedere Tauern Nord



2200 m



distant from ridges, behind discontinuities, in gullies, steep bowls in all aspects



in steep grass-covered terrain

## Avoid fresh snowdrifts

Avalanche danger above 2200 m is moderate, below that altitude danger is low.

Fresh snowdrift accumulations can trigger by 1 person above 2200 m on steep shady slopes, releases often medium-sized. Danger zones will increase with ascending altitude, also distant from ridges, in steep gullies and bowls and behind discontinuities in all aspects.

Latent danger of glide-snow avalanches persists. In high starting zones, avalanches can reach medium-to-large size. Avoid zones below glide cracks.

During the course of the day, small loose-snow avalanches can be expected on extremely steep sunny slopes due to solar radiation. In high-altitude zones where snowfall has been heavy in the Hohe Tauern and Northern Alps, isolated avalanches can grow to medium size.

## Snowpack structure

Weak layers occur esp. in near-surface layers of the snowpack. Due to the lower temperatures on Saturday, weak and trigger-prone layers can occur between old snow and fresh drifts (cold on warm). Other weak layers occur inside the drifts. More deeply embedded weak layers of faceted crystals near crusts are triggerable only in isolated cases.

Below 2200 m, the fresh snow and drifts have generally bonded well with the old snowpack.

On sunny slopes the fresh snow will quickly become moist and forfeit its firmness, esp. in steep rocky terrain.

## Weather

Showers can be expected during the nighttime hours, snowfall down to valley floors, but only minor amounts. Winds will be strong-to-stormy from the west, esp. in the northern ranges.

On Monday, visibility initially reduced by heavy clouds in the Northern Alps, but dry weather will soon prevail, the clouds disperse. In afternoon, pleasant conditions, good visibility, lots of sunshine. Initially brisk W/NW winds will slacken off noticeably. At 2000 m: -8 to 1 degree; at 3000 m: -15 to -7 degrees.

## Outlook

Snowdrift problem will recede as snow settles.

### Avalanche problems



### Danger ratings



### Expositions



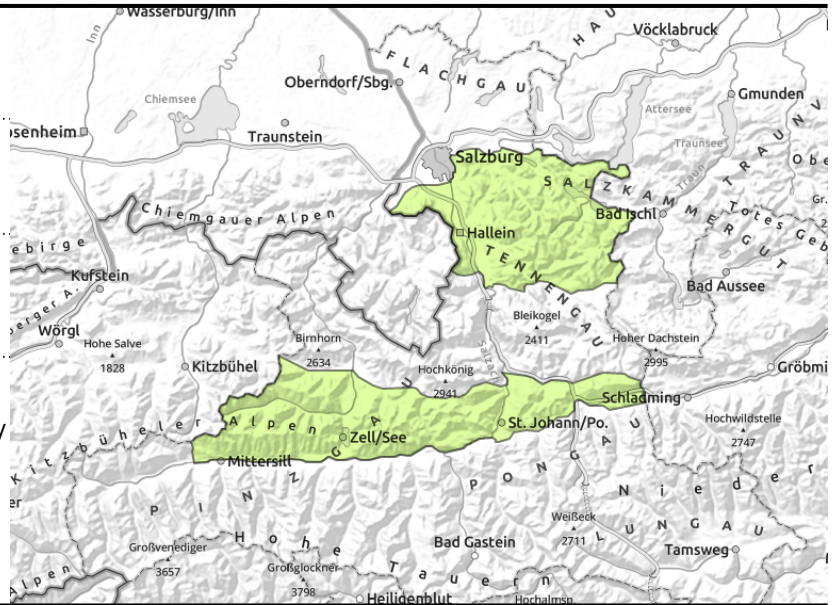
**Osterhorngruppe, Gamsfeldgruppe,  
 Untersbergstock, Kitzbüheler Alpen, Glemmtal,  
 Dientner Grasberge, Pongauer Grasberge**



distant from ridges, in gullies,  
 bowls, behind discontinuities



in extremely steep grass-  
 covered terrain, possible at any  
 time of day or night



## Beware small snowdrift accumulations

Avalanche danger is low.

At high altitudes, fresh small snowdrift accumulations are often triggerable by 1 person, esp in gullies and bowls. The danger of falling outweighs that of snow masses.

Latent danger of glide-snow avalanches persists. In high starting zones, avalanches can reach medium-to-large size. Avoid zones below glide cracks.

During the course of the day, small loose-snow avalanches can be expected on extremely steep sunny slopes due to solar radiation.

## Snowpack structure

Fresh snow and drifts have generally bonded well with the old snowpack. Weak layers inside the drifts or in transitions to the old snowpack can be trigger-prone in isolated cases. Wind impact has created a highly irregular snow distribution. On sunny slopes the fresh snow will quickly become moist and forfeit its firmness, esp. in steep rocky terrain.

## Weather

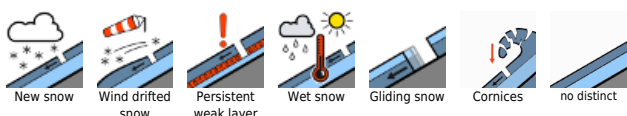
Showers can be expected during the nighttime hours, snowfall down to valley floors, but only minor amounts. Winds will be strong-to-stormy from the west, esp. in the northern ranges.

On Monday, visibility initially reduced by heavy clouds in the Northern Alps, but dry weather will soon prevail, the clouds disperse. In afternoon, pleasant conditions, good visibility, lots of sunshine. Initially brisk W/NW winds will slacken off noticeably. At 2000 m: -8 to 1 degree.

## Outlook

Avalanche danger levels are not expected to change significantly.

### Avalanche problems



### Danger ratings



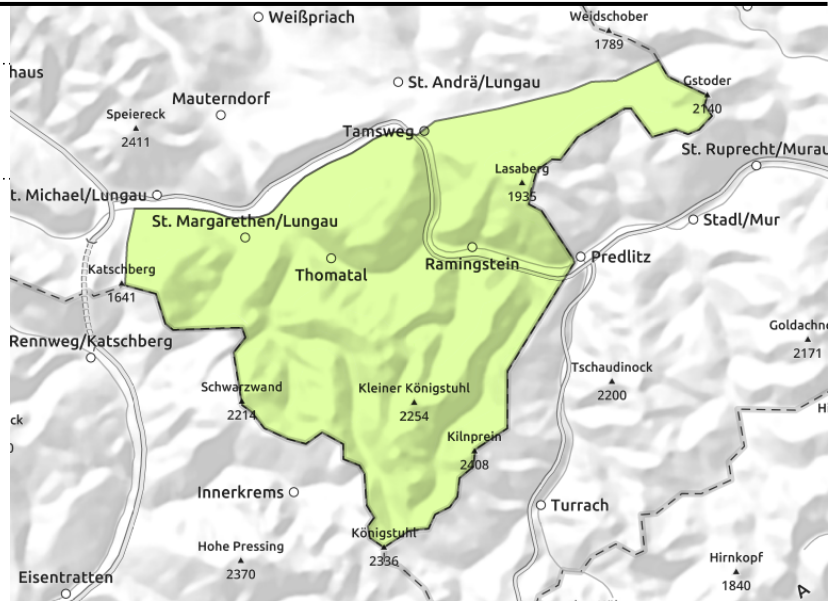
### Expositions



**Nockberge**



distant from ridgelines,  
thin/small snowdrift masses



**Beware snow snowdrift accumulations**

Fresh small snowdrift accumulations are trigger-prone at high altitudes, can often be triggered by 1 person, esp. in steep gullies and bowls. Danger of taking a fall outweighs that of snow masses. Latent danger of glide-snow avalanches persists. In high starting zones, avalanches can reach medium-to-large size. Avoid zones below glide cracks.

During the course of the day, small loose-snow avalanches can be expected on extremely steep sunny slopes due to solar radiation.

**Snowpack structure**

Fresh snow and drifts have generally bonded well with the old snowpack below 2200 m. Weak layers inside the drifts or in transitions to the old snowpack can be trigger-prone in isolated cases, slab releases are small.

On sunny slopes the fresh snow will quickly become moist and forfeit its firmness, esp. in steep rocky terrain.

**Weather**

During the nighttime hours, mostly dry, clouds dispersing somewhat.

On Monday, visibility initially reduced by heavy clouds in the Northern Alps, but dry weather will soon prevail, the clouds disperse. In afternoon, pleasant conditions, good visibility, lots of sunshine. Initially brisk W/NW winds will slacken off noticeably. At 2000 m: -8 to 1 degree; at 3000 m: -15 to -7 degrees.

**Outlook**

Avalanche danger levels are not expected to change significantly.

Translated by Jeffrey McCabe, [www.creativtrans.com](http://www.creativtrans.com)

**Avalanche problems**



**Danger ratings**



**Expositions**

