

Caution: freshly generated snowdrift accumulations



1800 m

Großenedigergruppe Nord, Glocknergruppe Nord, Loferer und Leoganger Steinberge, Goldberggruppe Nord, Goldberggruppe Alpenhauptkamm, Glocknergruppe Alpenhauptkamm, Großenedigergruppe Alpenhauptkamm, Steinernes Meer, Hochkönig, Hagengebirge, Göllstock, Ankogelgruppe, Muhr, Tennengebirge, Gosaukamm, Niedere Tauern Süd, Oberpinzgauer Grasberge, Niedere Tauern Alpenhauptkamm, Chiemgauer Alpen, Heutal, Reiteralpe, Kitzbüheler Alpen, Glemmtal, Dientner Grasberge, Niedere Tauern Nord, Pongauer Grasberge, Nockberge



Osterhorngruppe, Gamsfeldgruppe, Untersbergstock



Avalanche problems



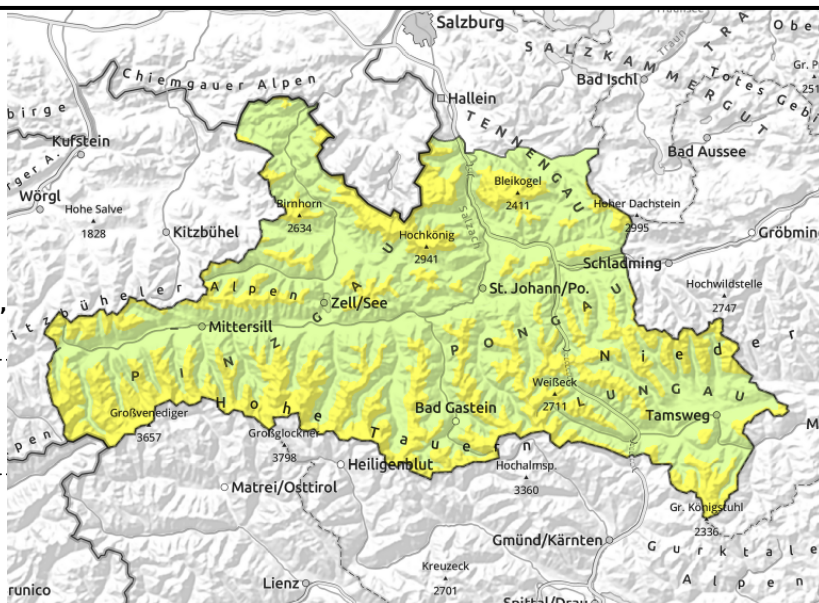
Danger ratings



Expositions



Großvenedigergruppe Nord, Glocknergruppe Nord, Loferer und Leoganger Steinberge, Goldberggruppe Nord, Goldberggruppe Alpenhauptkamm, Glocknergruppe Alpenhauptkamm, Großvenedigergruppe Alpenhauptkamm, Steinernes Meer, Hochkönig, Hagengebirge, Göllstock, Ankogelgruppe, Muhr, Tennengebirge, Gosaukamm, Niedere Tauern Süd, Oberpinzgauer Grasberge, Niedere Tauern Alpenhauptkamm, Chiemgauer Alpen, Heutal, Reiteralpe, Kitzbüheler Alpen, Glemmtal, Dientner Grasberge, Niedere Tauern Nord, Pongauer Grasberge, Nockberge



1800 m



distant from ridges, behind discontinuities, in gullies, steep bowls in all aspects



in steep grass-covered terrain

Avoid fresh snowdrifts

Avalanche danger above 1800 m is moderate, below that altitude danger is low.

Fresh snowdrift accumulations can trigger by 1 person above 1800 m on steep shady slopes, releases often medium-sized. Danger zones will increase with ascending altitude, also distant from ridges, in steep gullies and bowls and behind discontinuities in all aspects.

Latent danger of glide-snow avalanches persists. In high starting zones, avalanches can reach medium-to-large size. Avoid zones below glide cracks.

Snowpack structure

Weak layers occur esp. in near-surface layers of the snowpack. Due to the lower temperatures on Saturday, weak and trigger-prone layers can occur between old snow and fresh drifts (cold on warm). Other weak layers occur inside the drifts. More deeply embedded weak layers of faceted crystals near crusts are triggerable only in isolated cases.

All in all, 10-20 cm of fresh snow is expected by Sunday afternoon, irregularly distributed due to wind impact.

Weather

In the wake of the cold front, weather will remain instable in evening and into the night, though showers will taper off significantly and clouds could disperse. In early morning the showers will be more frequent along the Northern Alps. The westerly winds will be brisk to stormy.

On Sunday, showers possible right from the start, usually heavy cloud cover, not much sun, reduced visibility. Favored are the Lungau Nockberge, clouds will be scattered.

All in all, not much more than 10 cm of fresh snow is expected, possibly more in some spots of the Northern Alps. The westerly winds in the northern ranges will be gusty (70 km/hr). At 2000 m: -6 degrees; at 3000 m: -14 degrees.

Outlook

Snowdrift problem will persist

Avalanche problems



Danger ratings



Expositions



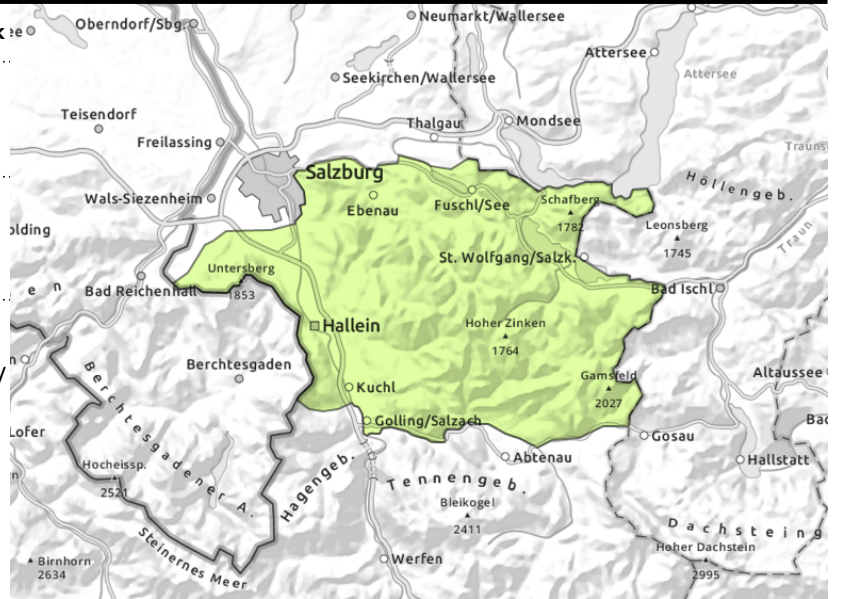
Osterhorngruppe, Gamsfeldgruppe, Untersbergstock



distant from ridges, in gullies, bowls, behind discontinuities



in extremely steep grass-covered terrain, possible at any time of day or night



Beware small snowdrift accumulations

Avalanche danger is low.

At high altitudes, fresh small snowdrift accumulations are often triggerable by 1 person, esp in gullies and bowls. The danger of falling outweighs that of snow masses.

Latent danger of glide-snow avalanches persists. In high starting zones, avalanches can reach medium-to-large size. Avoid zones below glide cracks.

Snowpack structure

Weak layers occur esp. in near-surface layers of the snowpack. Due to the lower temperatures on Saturday, weak and trigger-prone layers can occur between old snow and fresh drifts (cold on warm). Other weak layers occur inside the drifts. More deeply embedded weak layers of faceted crystals near crusts are triggerable only in isolated cases.

All in all, 5-15 cm of fresh snow is expected by Sunday afternoon, irregularly distributed due to wind impact.

Weather

In the wake of the cold front, weather will remain unstable in evening and into the night, though showers will taper off significantly and clouds could disperse. In early morning the showers will be more frequent along the Northern Alps. The westerly winds will be brisk to stormy.

On Sunday, showers possible right from the start, usually heavy cloud cover, not much sun, reduced visibility. Favored are the Lungau Nockberge, clouds will be scattered.

All in all, not much more than 10 cm of fresh snow is expected, possibly more in some spots of the Northern Alps. The westerly winds in the northern ranges will be gusty (70 km/hr). At 2000 m: -6 degrees; at 3000 m: -14 degrees.

Outlook

Avalanche danger levels are not expected to change significantly.

Translated by Jeffrey McCabe, www.creativtrans.com

Avalanche problems



New snow



Wind drifted snow



Persistent weak layer



Wet snow



Gliding snow



Cornices



no distinct

Danger ratings



1
low



2
moderate



3
considerable



4
high



5
very high

Expositions

