

Wet-snow problem, snowdrifts at high altitudes



Großenedigergruppe Nord, Glocknergruppe Nord, Loferer und Leoganger Steinberge, Goldberggruppe Nord, Goldberggruppe Alpenhauptkamm, Glocknergruppe Alpenhauptkamm, Großenedigergruppe Alpenhauptkamm, Steinernes Meer, Hochkönig, Hagengebirge, Göllstock, Ankogelgruppe, Muhr



Chiemgauer Alpen, Heutal, Reiteralpe, Osterhorngruppe, Gamsfeldgruppe, Untersbergstock, Oberpinzgauer Grasberge, Kitzbüheler Alpen, Glemmtal, Dientner Grasberge, Pongauer Grasberge, Niedere Tauern Nord, Niedere Tauern Alpenhauptkamm, Niedere Tauern Süd, Nockberge, Tennengebirge, Gosaukamm



Avalanche problems



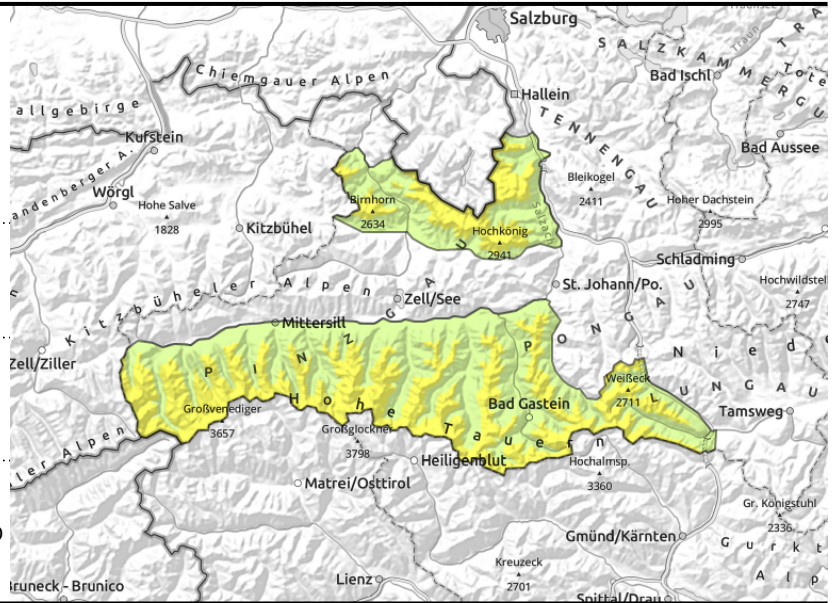
Danger ratings



Expositions



Großvenedigergruppe Nord, Glocknergruppe Nord, Loferer und Leoganger Steinberge, Goldberggruppe Nord, Goldberggruppe Alpenhauptkamm, Glocknergruppe Alpenhauptkamm, Großvenedigergruppe Alpenhauptkamm, Steinernes Meer, Hochkönig, Hagengebirge, Göllstock, Ankogelgruppe, Muhr



hefty impulse of warmth



near ridges, behind discontinuities, in gullies, steep bowls,

High-alpine snowdrift problem, still naturally triggered wet-snow avalanches

Avalanche danger above 1600 m is moderate, below that altitude danger is low.

Due to rain impact and warmth, danger of naturally triggered loose-snow avalanches will increase as the day unfolds. In steep rocky terrain loose-snow releases can be medium sized. The softening snowpack is an indicator of danger. Glide-snow avalanches of medium size can release at any time of day or night.

Above 2400 m snowdrifts can be generated and in some places triggered by 1 person. Danger zones occur on NW/N/E facing steep slopes, near ridges, behind discontinuities and in gullies and bowls, releases can reach medium size.

Snowpack structure

Due to rain impact and overcast nighttime skies the snowpack is moist-to-wet up to 2000 m. The hefty impulse of warmth up to high altitudes is making the snowpack forfeit its firmness. Above 2000 there was 10 cm of fresh snow registered, more on the Main Alpine Ridge. At 2000-2400 m the fresh snow lies deposited atop a well settled snowpack, above the it is often unbonded. Above 2400 m, fresh snowdrifts lie atop loose snow, esp. on shady slopes. A more deeply embedded weak layer for slab avalanches occurs above 2400 m: faceted crystals near crusts and graupel.

Gliding snow activity has increased slightly.

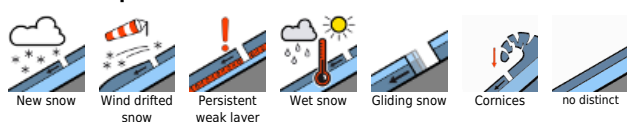
Weather

The precipitation will quickly taper off during the night, some sunshine in the morning, and dry. From Steinberge to Dachstein, some fog is possible, otherwise good visibility, though diffuse. The N/NW winds will be moderate-to-brisk (60-70 km/hr) later slackening off. At 2000 m: 3 or 4 degree; at 3000 m: -1 degree.

Outlook

Dropping temperatures and snowfall starting Saturday at midday: fewer wet-snow problems, more snowdrift problems.

Avalanche problems



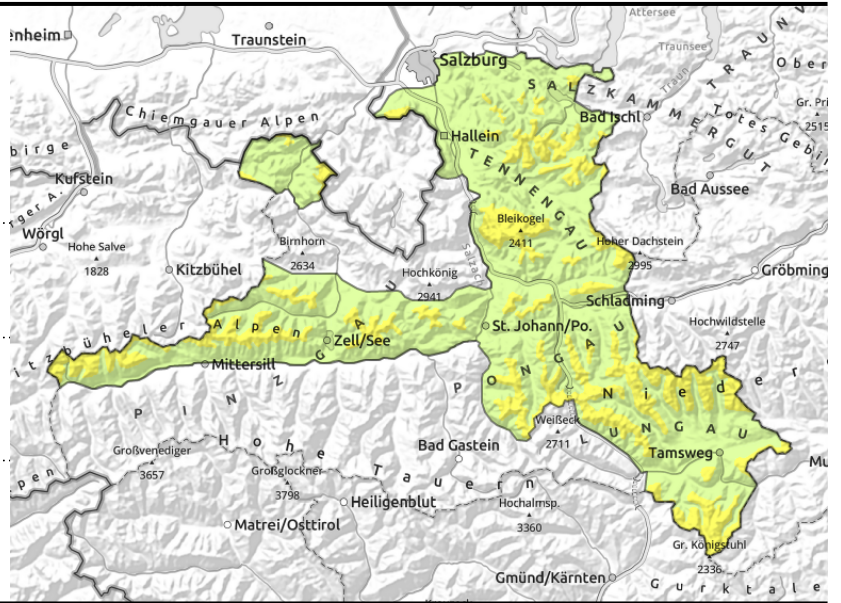
Danger ratings



Expositions



Chiemgauer Alpen, Heutal, Reiteralpe, Osterhorngruppe, Gamsfeldgruppe, Untersbergstock, Oberpinzgauer Grasberge, Kitzbüheler Alpen, Glemmtal, Dientner Grasberge, Pongauer Grasberge, Niedere Tauern Nord, Niedere Tauern Alpenhauptkamm, Niedere Tauern Süd, Nockberge, Tennengebirge, Gosaukamm



hefty impulse of warmth



in extremely steep terrain, possible at any time of day or night

Wet-snow and gliding snow activity

Avalanche danger above 1600 m is moderate, below that altitude danger is low.

Due to rain impact and warmth, danger of naturally triggered loose-snow avalanches will increase as the day unfolds. In steep rocky terrain loose-snow releases can be medium sized. The softening snowpack is an indicator of danger. Glide-snow avalanches of medium size can release at any time of day or night.

Fresh snowdrift accumulations have generated, sometimes triggerable by 1 person. The danger of falling outweighs that of snow masses.

Snowpack structure

Due to rain impact and overcast nighttime skies the snowpack is moist-to-wet up to 2000 m. The hefty impulse of warmth up to high altitudes is making the snowpack forfeit its firmness. Above 2000 there was 10 cm of fresh snow registered. At 2000-2400 m the fresh snow lies deposited atop a well settled snowpack, above the it is often unbonded. Above 2400 m, fresh snowdrifts lie atop loose snow, esp. on shady slopes. A more deeply embedded weak layer for slab avalanches occurs above 2400 m: faceted crystals near crusts and graupel. Gliding snow activity has increased slightly.

Weather

The precipitation will quickly taper off during the night, some sunshine in the morning, and dry. From Steinberge to Dachstein, some fog is possible, otherwise good visibility, though diffuse. The N/NW winds will be moderate-to-brisk (60-70 km/hr) later slackening off. At 2000 m: 3 or 4 degree; at 3000 m: -1 degree.

Outlook

Dropping temperatures and snowfall starting Saturday at midday: fewer wet-snow problems, more snowdrift problems.

Translated by Jeffrey McCabe, www.creativtrans.com

Avalanche problems



Danger ratings



Expositions

