

## Wet-snow problem due to rain impact

**2**  
**1** 1600 m

Großenedigergruppe Nord, Glocknergruppe Nord, Loferer und Leoganger Steinberge, Goldberggruppe Nord, Goldberggruppe Alpenhauptkamm, Glocknergruppe Alpenhauptkamm, Großenedigergruppe Alpenhauptkamm, Steinernes Meer, Hochkönig, Hagengebirge, Göllstock, Ankogelgruppe, Muhr



**2**  
**1** 1600 m

Chiemgauer Alpen, Heutal, Reiteralpe, Osterhorngruppe, Gamsfeldgruppe, Untersbergstock, Oberpinzgauer Grasberge, Kitzbüheler Alpen, Glemmtal, Dientner Grasberge, Pongauer Grasberge, Niedere Tauern Nord, Niedere Tauern Alpenhauptkamm, Niedere Tauern Süd, Nockberge, Tennengebirge, Gosaukamm



### Avalanche problems



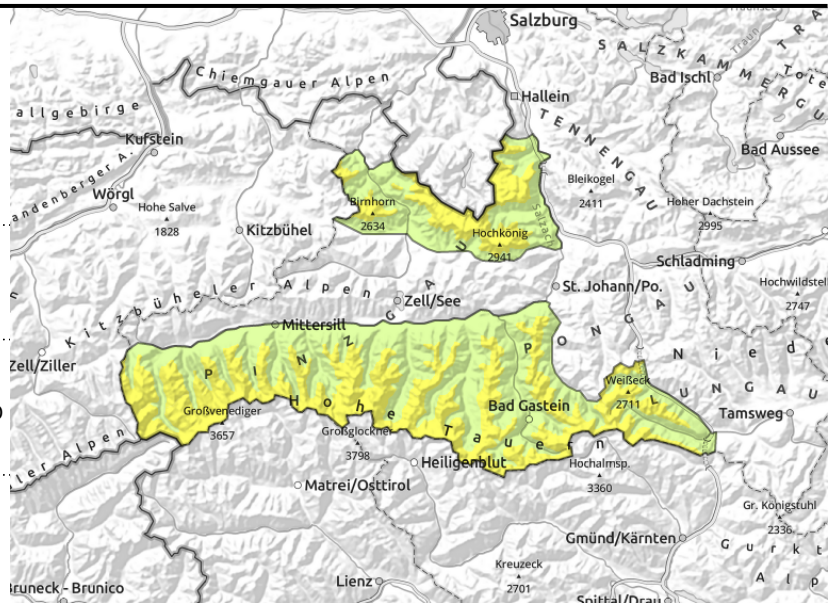
### Danger ratings



### Expositions



**Großvenedigergruppe Nord, Glocknergruppe Nord, Loferer und Leoganger Steinberge, Goldberggruppe Nord, Goldberggruppe Alpenhauptkamm, Glocknergruppe Alpenhauptkamm, Großvenedigergruppe Alpenhauptkamm, Steinernes Meer, Hochkönig, Hagengebirge, Göllstock, Ankogelgruppe, Muhr**



near ridges, behind discontinuities, in gullies, steep bowls,

as rain sets in

## High-alpine snowdrift problem, still naturally triggered wet-snow avalanches

Avalanche danger above 1600 m is moderate, below that altitude danger is low.

Above 2400 m snowdrifts can be generated and in some places triggered by 1 person. Danger zones occur on NW/N/E facing steep slopes, near ridges, behind discontinuities and in gullies and bowls, releases can reach medium size.

Due to rain impact and warmth, danger of naturally triggered loose-snow avalanches will increase as the day unfolds. In steep rocky terrain loose-snow releases can be medium sized. The softening snowpack is an indicator of danger. Glide-snow avalanches of medium size can release at any time of day or night.

### Snowpack structure

Overnight a melt-freeze crust forms in many places, but softens up due to rain impact. Above 2000 m the fresh snow is deposited mostly atop a settled snowpack, on shady slopes above 2400 m atop loose layers. Loose snow is the weak layer beneath fresh drifts which will get thicker during the day. A more deeply embedded weak layer for slab avalanches occurs above 2400 m: faceted crystals near crusts and graupel. Below 2000 m the snowpack has become thoroughly moist repeated times. Gliding snow activity has increased slightly.

### Weather

Thursday will start with some sunshine and good visibility. In the Pinzgau and Northern Alps clouds will rapidly move in and rain/snow showers will spread. In afternoon, the showers will intensify, visibility deteriorate, snowfall level initially above 2000 m, later the snowfall level will drop a bit lower. Above 2000 m, 5-10 cm of fresh snow is expected by Thursday evening. The W/NW winds will be brisk to strong (up to 60-70 km/hr). At 2000 m: from 3 dropping to 0 degrees; at 3000 m: from -3 to -6 degrees.

### Outlook

Avalanche danger levels are not expected to change significantly.

#### Avalanche problems



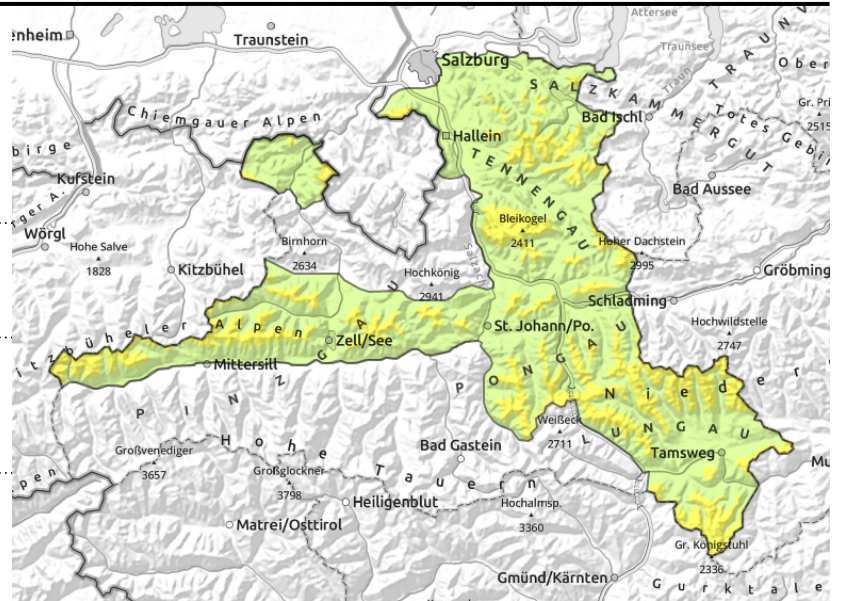
#### Danger ratings

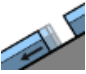



#### Expositions



**Chiemgauer Alpen, Heutal, Reiteralpe, Osterhorngruppe, Gamsfeldgruppe, Untersbergstock, Oberpinzgauer Grasberge, Kitzbüheler Alpen, Glemmtal, Dientner Grasberge, Pongauer Grasberge, Niedere Tauern Nord, Niedere Tauern Alpenhauptkamm, Niedere Tauern Süd, Nockberge, Tennengebirge, Gosaukamm**



  in extremely steep terrain, possible at any time of day or night

  as rain sets in

## Wet-snow activity due to rain impact

Avalanche danger above 1600 m is moderate, below that altitude danger is low.

Glide-snow avalanches can release naturally at any time of day or night, releases can reach medium size. In addition, wet-snow avalanches can release naturally due to rain and warmth mostly small avalanches trigger esp. in steep rocky terrain. If the snowpack softens, this indicates danger.

Due to fresh snowfall, ridgeline snowdrifts can be generated at high altitudes, in places triggerable by 1 person. Beware the dangers of taking a fall.

## Snowpack structure

Overnight a melt-freeze crust forms in many places, but softens up due to rain impact. Above 2000 m the fresh snow is deposited mostly atop a settled snowpack, on shady slopes above 2400 m atop loose layers. Loose snow is the weak layer beneath fresh drifts which will get thicker during the day. A more deeply embedded weak layer for slab avalanches occurs above 2400 m: faceted crystals near crusts and graupel. Below 2000 m the snowpack has become thoroughly moist repeated times. Gliding snow activity has increased slightly.

## Weather

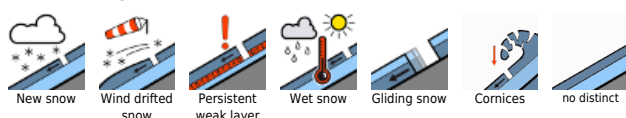
Thursday will start with some sunshine and good visibility. In the Pinzgau and Northern Alps clouds will rapidly move in and rain/snow showers will spread. In afternoon, the showers will intensify, visibility deteriorate, snowfall level initially above 2000 m, later the snowfall level will drop a bit lower. Above 2000 m, 5-10 cm of fresh snow is expected by Thursday evening. The W/NW winds will be brisk to strong (up to 60-70 km/hr). At 2000 m: from 3 dropping to 0 degrees; at 3000 m: from -3 to -6 degrees.

## Outlook

Avalanche danger levels are not expected to change significantly.

Translated by Jeffrey McCabe, [www.creativtrans.com](http://www.creativtrans.com)

### Avalanche problems



### Danger ratings



### Expositions

