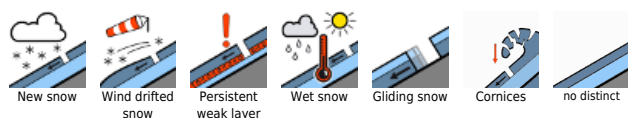


Fresh snow atop varied snow base

| | | |
|--|---|--|
| | <p>1400 m Großenedigergruppe Nord, Glocknergruppe Nord, Loferer und Leoganger Steinberge, Goldberggruppe Nord, Goldberggruppe Alpenhauptkamm, Glocknergruppe Alpenhauptkamm, Großenedigergruppe Alpenhauptkamm, Steinernes Meer, Hochkönig, Hagengebirge, Göllstock, Ankogelgruppe, Muhr, Niedere Tauern Süd</p> | |
| | <p>Untersbergstock, Nockberge</p> | |
| | <p>1400 m Oberpinzgauer Grasberge, Kitzbüheler Alpen, Glemmtal, Dientner Grasberge, Pongauer Grasberge, Tennengebirge, Gosaukamm, Niedere Tauern Nord, Niedere Tauern Alpenhauptkamm, Chiemgauer Alpen, Heutal, Reiteralpe, Osterhorngruppe, Gamsfeldgruppe</p> | |

Avalanche problems



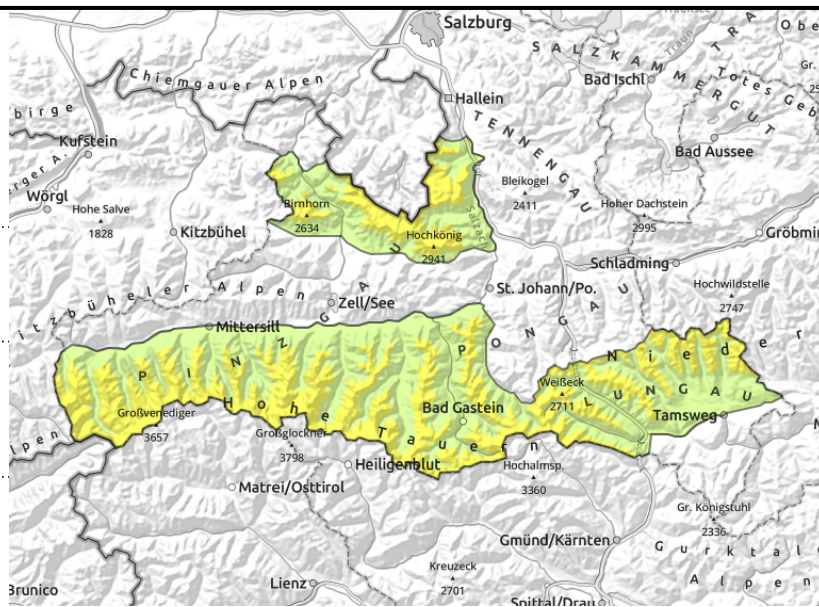
Danger ratings





Expositions



Großvenedigergruppe Nord, Glocknergruppe Nord, Loferer und Leoganger Steinberge, Goldberggruppe Nord, Goldberggruppe Alpenhauptkamm, Glocknergruppe Alpenhauptkamm, Großvenedigergruppe Alpenhauptkamm, Steinernes Meer, Hochkönig, Hagengebirge, Göllstock, Ankogelgruppe, Muhr, Niedere Tauern Süd



 loose-snow avalanches triggering naturally in steep rocky terrain

 in extremely steep grass-covered terrain and from rock plates (below 2500 m)

Wet-snow/glide-snow avalanches triggering naturally

Avalanche danger above 1400 m is moderate. Small wet loose-snow avalanches and isolated glide-snow avalanches can trigger from sun-drenched steep and rocky terrain. Apart from that, at high/high-alpine altitudes, snowdrifts can trigger as small-to-medium slab avalanches, both near to and distant from ridgelines, behind discontinuities and in gullies. Most danger zones occurred on NW/N/E facing steep slopes. Above 2400 m on shady slopes there are still weak layers which can be triggered by large additional loading, releases occasionally grow to large size.

Snowpack structure

Atop a moistened old snowpack surface up to 2000-2300 m, fresh snowfall is expected amid modearte wind impact from the northwest: 10-20 cm, more in the Hohe Tauern. At intermediate altitudes, rainfall. At high-alpine altitudes the base consists of settled fresh snow, dry on shady slopes. At high altitudes the W/NW winds have generated fresh snowdrifts. Beneath the latest fresh snowfall are melt-freeze crusts with which the fresh snow bonds poorly. Weak layer for slab avalanches: above 2400 m, blanketed fresh snow and faceted crystals near crusts, and graupel. Below 2000 m the snowpack has repeatedly become thoroughly moist. Gliding snow activity has increased slightly.

Weather

Nocturnal skies will be overcast with rainfall and snow showers, it will remain dry only in the Nockberge. Snowfall level dropping from 1700 m in the evening down to 1400 m in early morning. Expected snow: 5-15 cm, in high-alpine regions of Hohe Tauern up to 20-30 cm possible. Moderate NW winds blowing on the Main Alpine Ridge.

On Tuesday visibility will improve significantly, fog and brief showers will reduce it only somewhat in the morning, snowfall level 1500 m. As of midday, intermittent sunshine. At 2000 m: -3 to +3 degrees; at 3000 m: -7 degrees. The NW winds will be moderate.

Outlook

On Wednesday very sunny, hardly any wind, and warm. Naturally triggered loose-snow avalanches from the fresh fallen snow in sun-drenched steep terrain, small trigger-prone snowdrift accumulations in ridgeline terrain above 2000 m. Gliding snow activity will remain heightened.

Avalanche problems



Danger ratings



Expositions



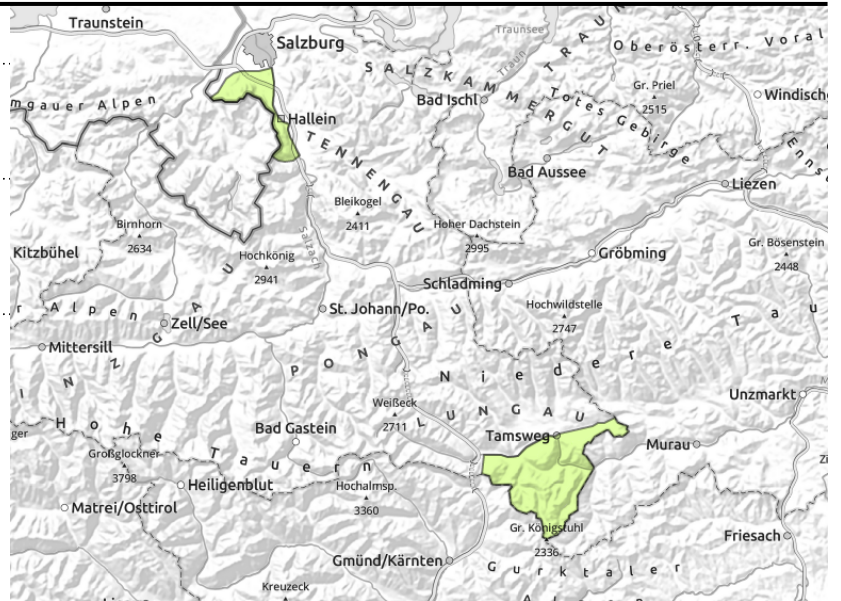
Untersbergstock, Nockberge



isolated glide-snow avalanches
 in very steep grass-covered
 terrain



behind discontinuities,
 thin/small snowdrift masses at
 high altitudes



Sunny, windy, mostly dry

Avalanche danger is low. In steep terrain, small wet loose-snow avalanches and isolated glide-snow (magnitude 1 & 2) avalanches are possible.

Small snowdrift accumulations can trigger at high altitudes esp. by large additional loading. The danger of falling outweighs that of snow masses. Beware steep discontinuities in the terrain!

Snowpack structure

Atop a moist old snowpack, 5-10 cm of fresh snow fell at high altitudes, was transported by strong W/N winds. Bonding is favorable. At intermediate altitudes the snowpack has already been thoroughly moistened repeated times. Below 1400 m there is hardly any snow on the ground. Gliding snow activity will increase somewhat.

Weather

Nighttime skies will be overcast. A moderate NW wind will be blowing.

On Tuesday, scattered clouds, often sunny but windy. The NW winds will be blowing at 30-40 km/hr. Dry. At 2000 m: -2 to +1 degree.

Outlook

On Wednesday, very sunny, hardly any wind, warm. Wet-snow problem, particularly on very steep sunny slopes.

Avalanche problems



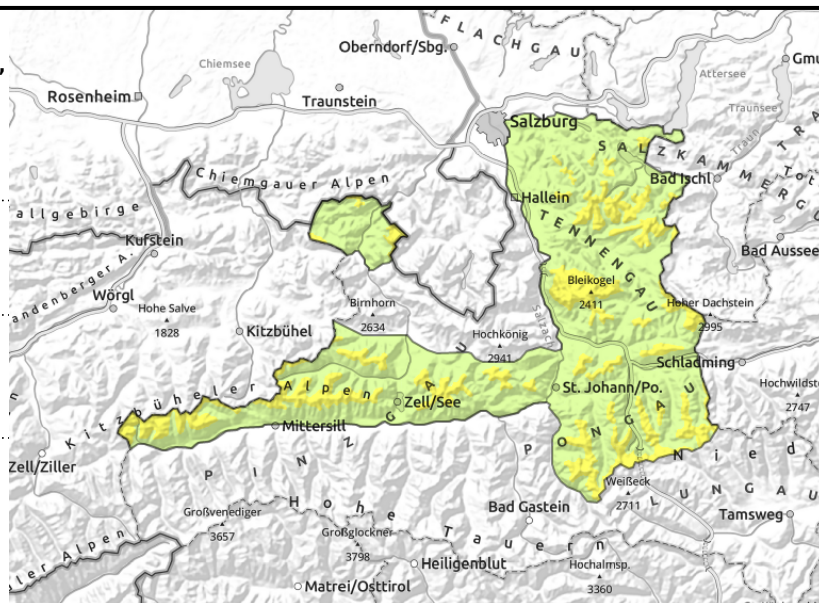
Danger ratings



Expositions



Oberpinzgauer Grasberge, Kitzbüheler Alpen, Glemmtal, Dientner Grasberge, Pongauer Grasberge, Tennengebirge, Gosaukamm, Niedere Tauern Nord, Niedere Tauern Alpenhauptkamm, Chiemgauer Alpen, Heutal, Reiteralpe, Osterhorngruppe, Gamsfeldgruppe



on extremely steep grass-covered slopes

near ridgelines, thin/small snowdrift masses

Gliding snow activity will increase

Avalanche danger above 1400 m is moderate. In steep terrain, small wet loose-snow avalanches and isolated glide-snow avalanches (magnitude 1 & 2) can trigger. Small snowdrift accumulations can trigger at high altitudes esp. by large additional loading. Most danger zones are on NW/N/NE facing slopes.

Snowpack structure

Atop a moistened old snowpack surface up to 2000-2300 m, fresh snowfall is expected amid moderate wind impact from the northwest: 5-15 cm. Bonding of fresh snow to the snow base is less favorable with ascending altitude. At intermediate altitudes, rainfall weakens the snowpack. Below 1400 m there is little snow on the ground. Gliding snow activity has increased slightly.

Weather

Nocturnal skies will be overcast with rainfall and snow showers. Snowfall level dropping from 1700 m in the evening down to 1400 m in early morning. Expected snow: 5-15 cm, in high-alpine regions of Hohe Tauern up to 20-30 cm possible. Moderate NW winds blowing on the Main Alpine Ridge and in Tennengebirge.

On Tuesday visibility will improve significantly, fog and brief showers will reduce it only somewhat in the morning, snowfall level 1500 m. As of midday, intermittent sunshine. At 2000 m: -3 to +3 degrees; at 3000 m: -7 degrees. The NW winds will be moderate.

Outlook

On Wednesday very sunny, hardly any wind, and warm. Naturally triggered loose-snow avalanches from the fresh fallen snow in sun-drenched steep terrain, small trigger-prone snowdrift accumulations in ridgeline terrain above 2000 m. Gliding snow activity will remain heightened.

Translated by Jeffrey McCabe, www.creativtrans.com

Avalanche problems



Danger ratings



Expositions

