

Intermittent rainfall up to 2000 m

	<p>1400 m</p> <p>Großenedigergruppe Nord, Glocknergruppe Nord, Loferer und Leoganger Steinberge, Goldberggruppe Nord, Goldberggruppe Alpenhauptkamm, Glocknergruppe Alpenhauptkamm, Großenedigergruppe Alpenhauptkamm, Steinernes Meer, Hochkönig, Hagengebirge, Göllstock, Ankogelgruppe, Muhr, Niedere Tauern Süd</p>	
	<p>Untersbergstock, Nockberge</p>	
	<p>1400 m</p> <p>Oberpinzgauer Grasberge, Kitzbüheler Alpen, Glemmtal, Dientner Grasberge, Pongauer Grasberge, Tennengebirge, Gosaukamm, Niedere Tauern Nord, Niedere Tauern Alpenhauptkamm, Chiemgauer Alpen, Heutal, Reiteralpe, Osterhorngruppe, Gamsfeldgruppe</p>	

Avalanche problems



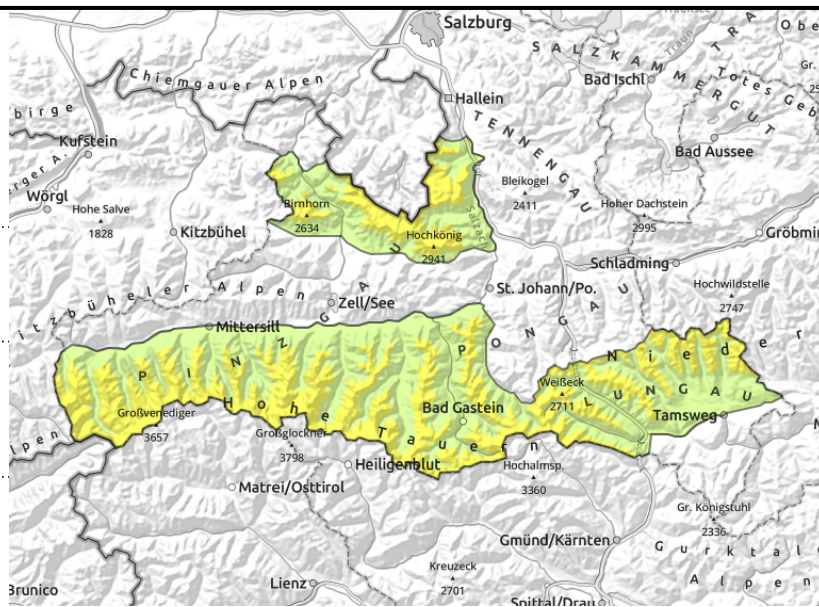
Danger ratings



Expositions



Großvenedigergruppe Nord, Glocknergruppe Nord, Loferer und Leoganger Steinberge, Goldberggruppe Nord, Goldberggruppe Alpenhauptkamm, Glocknergruppe Alpenhauptkamm, Großvenedigergruppe Alpenhauptkamm, Steinernes Meer, Hochkönig, Hagengebirge, Göllstock, Ankogelgruppe, Muhr, Niedere Tauern Süd



below 2000 m, mostly small wet-snow/isolated glide-snow avalanches



fresh/older drifts + local persistent weak layer at high altitudes

Naturally triggering wet loose-snow/glide-snow avalanches

Avalanche danger above 1400 m is moderate. Small wet loose-snow avalanches and isolated glide-snow avalanches can trigger (daytime cycle). In high/high-alpine regions snowdrifts can trigger a slab (small-to-medium), most danger zones are easily recognized, lie nearer to and distant from ridges, behind discontinuities and in gullies. Most danger zones are on NW/N/SE facing steep slopes, also on south-facing slopes in high-alpine terrain. Above 2400 m, esp. on shady slopes, weak layers can be triggered by large additional loading and releases occasionally grow to large size.

Snowpack structure

The latest snowfall (5-15 cm) was moistened on Sunday due to radiation and higher temperatures, at least on sunny slopes. Below 2000 m, rain impact is weakening the snowpack and will continue to do so through Monday. At high altitudes, westerly to northwesterly winds have generated small drifts, these can be triggered by skiers. The snowpack is highly irregular due to storm impact. The snowpack is quite irregular. Possible weak layer for a slab or loose-snow avalanches: faceted crystals on the melt-freeze layer above 2400 m. The old snowpack has been repeatedly made wet up 2000 m, most recently from rain impact. Gliding snow activity has increased.

Weather

Nocturnal skies will be overcast, minor precipitation expected, snowfall level 1600-2000 m. On Monday, adequate visibility, intermittent minor rain/snowfall, hardly any sunshine. In afternoon, heavier cloud cover, rainfall and snowfall will set in, snowfall level at 1400-1800 m. At 2000 m: 0 degrees; at 3000 m: -6 degrees. Hardly any wind in the morning, strong W/NW winds in afternoon. All in all, 5-10 cm of fresh snow expected, in the Nockberge it will remain dry. On Monday night further snow showers (5-10 cm).

Outlook

On Tuesday, heavy snowfall in places, then increasingly sunny. In wind-exposed terrain, danger of slab avalanches will increase.

Avalanche problems



Danger ratings



Expositions



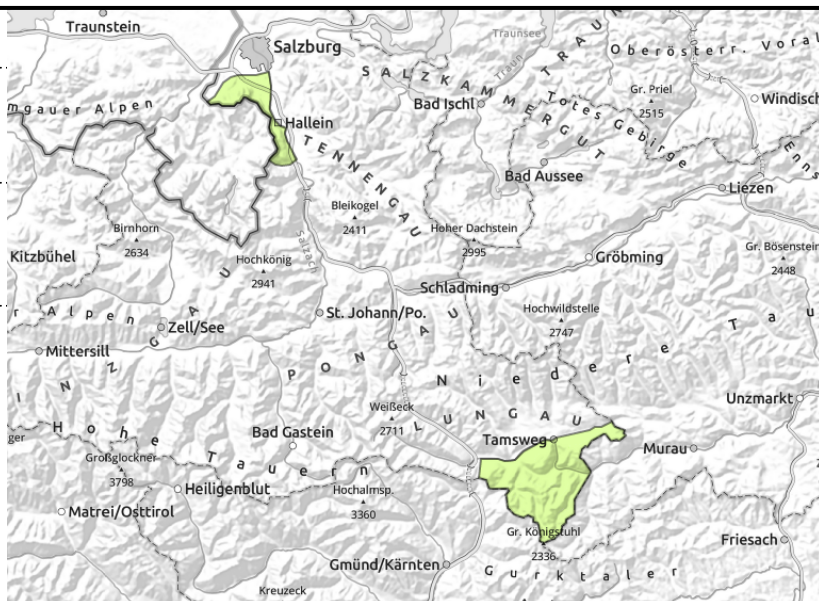
Untersbergstock, Nockberge



small wet-snow avalanches,
 isolated glide-snow avalanches



behind discontinuities,
 thin/small snowdrift masses at
 high altitudes



Naturally triggering wet loose-snow avalanches

Avalanche danger is low. In steep terrain, small wet loose-snow avalanches and isolated glide-snow (magnitude 1 & 2) avalanches are possible.

Small snowdrift accumulations can trigger at high altitudes esp. by large additional loading. The danger of falling outweighs that of snow masses. Beware steep discontinuities in the terrain!

Snowpack structure

Atop a moist old snowpack, 5-10 cm of fresh snow fell at high altitudes, was transported by strong W/N winds. Bonding is favorable. At intermediate altitudes the snowpack has already been thoroughly moistened repeated times. Below 1400 m there is hardly any snow on the ground. Gliding snow activity has receded.

Weather

Nocturnal skies will be overcast, minor precipitation expected, snowfall level 1600-2000 m. On Monday, adequate visibility, intermittent minor rain/snowfall, hardly any sunshine. In afternoon, heavier cloud cover, rainfall and snowfall will set in, snowfall level at 1400-1800 m. At 2000 m: 0 degrees; at 3000 m: -6 degrees. Hardly any wind in the morning, strong W/NW winds in afternoon. All in all, 5-10 cm of fresh snow expected, in the Nockberge it will remain dry. On Monday night further snow showers (5-10 cm).

Outlook

On Tuesday, increasingly sunny. Naturally triggered loose-snow avalanches in sun-drenched steep terrain and in wind-exposed terrain also a snowdrift problem.

Avalanche problems



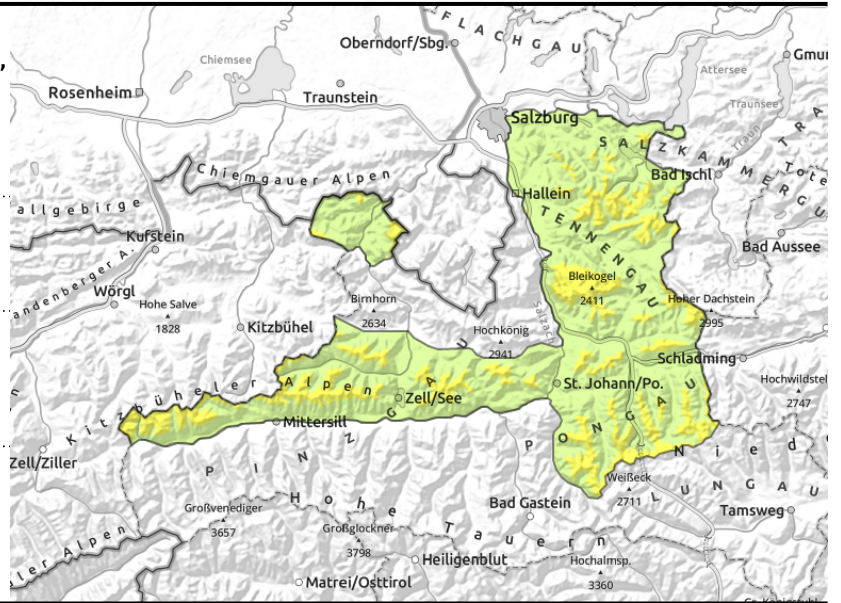
Danger ratings





Expositions



Oberpinzgauer Grasberge, Kitzbüheler Alpen, Glemmtal, Dientner Grasberge, Pongauer Grasberge, Tennengebirge, Gosaukamm, Niedere Tauern Nord, Niedere Tauern Alpenhauptkamm, Chiemgauer Alpen, Heutal, Reiteralpe, Osterhorngruppe, Gamsfeldgruppe



 naturally triggered avalanches below 2000 m due to rain impact

 in extremely steep grass-covered terrain

Gliding snow increasing

Avalanche danger above 1400 m is moderate. In steep terrain, small wet loose-snow avalanches and isolated glide-snow avalanches (magnitude 1 & 2) can trigger. Small snowdrift accumulations can trigger at high altitudes esp. by large additional loading, both near to and distant from ridges, behind discontinuities and in gullies. Most danger zones are on NW/N/NE facing slopes.

Snowpack structure

The latest precipitation brought 10 cm of fresh snow to Niedere Tauern high altitude slopes, moistened on Sunday from radiation and warmth. Below 2000 m, rain impact is weakening the snowpack and will continue to do so through Monday. At high altitudes, westerly to northwesterly winds have generated small drifts, these can be triggered by skiers. The snowpack is highly irregular due to storm impact. The snowpack is quite irregular. Gliding snow activity has increased. Proneness to triggering of snowdrifts has receded after the NW winds on Saturday.

Weather

Nocturnal skies will be overcast, minor precipitation expected, snowfall level 1600-2000 m. On Monday, adequate visibility, intermittent minor rain/snowfall, hardly any sunshine. In afternoon, heavier cloud cover, rainfall and snowfall will set in, snowfall level at 1400-1800 m. At 2000 m: 0 degrees; at 3000 m: -6 degrees. Hardly any wind in the morning, strong W/NW winds in afternoon. All in all, 5-10 cm of fresh snow expected, in the Nockberge it will remain dry. On Monday night further snow showers (5-10 cm).

Outlook

On Tuesday, heavy snowfall in places, then increasingly sunny. In wind-exposed terrain, danger of slab avalanches will increase.

Translated by Jeffrey McCabe, www.creativtrans.com

Avalanche problems



Danger ratings



Expositions

