

Sunshine for a spell, clouds moving in later



2200 m

Großenedigergruppe Nord, Glocknergruppe Nord, Loferer und Leoganger Steinberge, Goldberggruppe Nord, Goldberggruppe Alpenhauptkamm, Glocknergruppe Alpenhauptkamm, Großenedigergruppe Alpenhauptkamm, Steinernes Meer, Hochkönig, Hagengebirge, Göllstock, Ankogelgruppe, Muhr, Niedere Tauern Süd



Untersbergstock, Osterhorngruppe, Gamsfeldgruppe, Chiemgauer Alpen, Heutal, Reiteralpe, Pongauer Grasberge, Dientner Grasberge, Niedere Tauern Nord, Nockberge, Kitzbüheler Alpen, Glemmtal, Tennengebirge, Gosaukamm, Oberpinzgauer Grasberge, Niedere Tauern Alpenhauptkamm



Avalanche problems



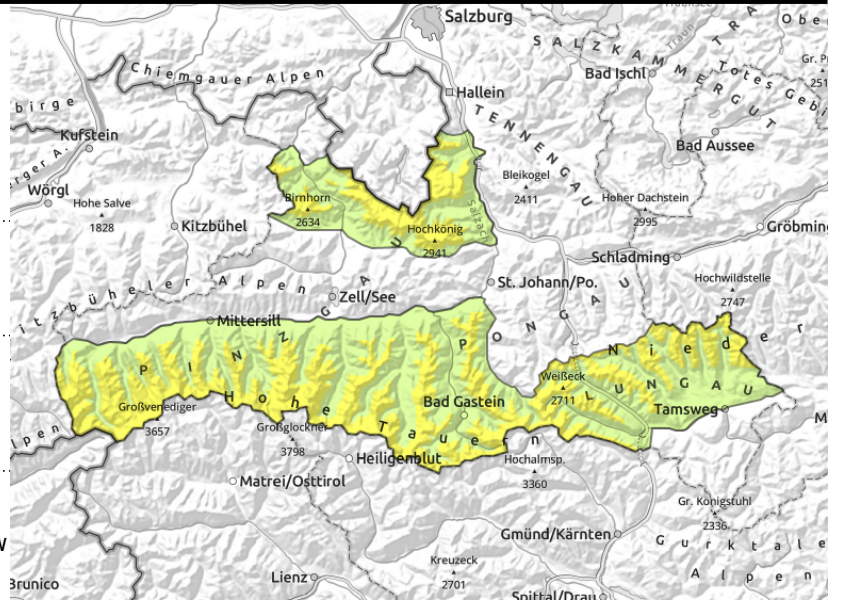
Danger ratings



Expositions



Großvenedigergruppe Nord, Glocknergruppe Nord, Loferer und Leoganger Steinberge, Goldberggruppe Nord, Goldberggruppe Alpenhauptkamm, Glocknergruppe Alpenhauptkamm, Großvenedigergruppe Alpenhauptkamm, Steinernes Meer, Hochkönig, Hagengebirge, Göllstock, Ankogelgruppe, Muhr, Niedere Tauern Süd



fresh/older drifts + local persistent weak layer at high altitudes



below 2000 m, small wet-snow avalanches, isolated glide-snow avalanches on very steep sunny slopes

Keep an eye on snowdrifts at high altitudes

Avalanche danger above 2200 m is moderate, below that altitude danger is low. Small wet loose-snow avalanches and isolated glide-snow avalanches can trigger (daytime cycle). In high/high-alpine regions snowdrifts can trigger a slab (small-to-medium), most danger zones are easily recognized, lie nearer to and distant from ridges, behind discontinuities and in gullies. Most danger zones are on NW/N/SE facing steep slopes, also on south-facing slopes in high-alpine terrain. Above 2400 m, esp. on shady slopes, weak layers can be triggered by large additional loading and releases occasionally grow to large size.

Snowpack structure

Atop a superficially moistened snowpack (up to 2500 m), often melt-freeze encrusted, 5-10 cm of fresh snow lie deposited, often riddled with graupel. Strong W/N winds will transport the fresh snow. The snowfall and snowdrifts from Tuesday were able to settle, are moistened or sticky up to 2600 m. The snowpack is highly irregular due to storm impact. The snowpack is quite irregular. Possible weak layer for a slab or loose-snow avalanches: faceted crystals on the melt-freeze layer above 2400 m. The old snowpack has been repeatedly made wet up 2000 m, most recently from rain impact. Gliding snow activity is currently low.

Weather

Tonight, predominantly overcast skies with rainfall/snow showers (5 cm of fresh snow at high altitudes), tapering off during the night, snowfall level 1500-1800 m.

On Sunday, adequate visibility, residual fog in the morning, later on cloudbanks will pass through, the peaks will remain in the clear, intermittent sunshine, light-to-moderate W/NW winds. At 2000 m: -3 to +3 degrees; at 3000 m: -6 degrees.

Outlook

On Monday following a night of overcast skies with rainfall, snowfall above 1500-2000 m, cloudiness will continue during the daytime, hardly any sunshine expected. Avalanche danger levels are not expected to change significantly.

Avalanche problems



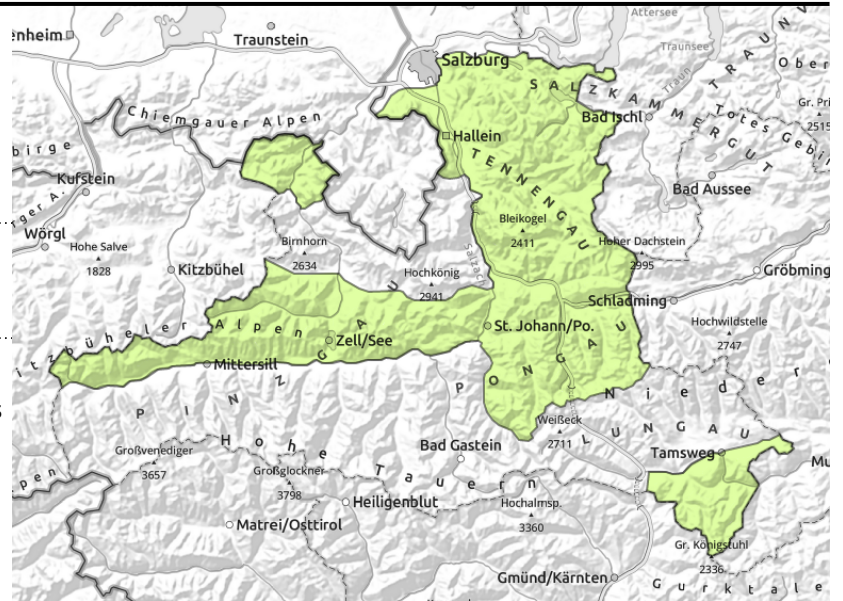
Danger ratings



Expositions



Untersbergstock, Osterhorngruppe, Gamsfeldgruppe, Chiemgauer Alpen, Heutal, Reiteralpe, Pongauer Grasberge, Dientner Grasberge, Niedere Tauern Nord, Nockberge, Kitzbüheler Alpen, Glemmtal, Tennengebirge, Gosaukamm, Oberpinzgauer Grasberge, Niedere Tauern Alpenhauptkamm



small wet-snow avalanches, isolated glide-snow avalanches

Naturally triggering wet loose-snow avalanches

Avalanche danger is low. In steep terrain, small wet loose-snow avalanches and isolated glide-snow (magnitude 1 & 2) avalanches are possible.

Small snowdrift accumulations can trigger at high altitudes esp. by large additional loading. The danger of falling outweighs that of snow masses. Beware steep discontinuities in the terrain!

Snowpack structure

Atop a moist old snowpack, 5-10 cm of fresh snow fell at high altitudes, was transported by strong W/N winds. Bonding is favorable. At intermediate altitudes the snowpack has already been thoroughly moistened repeated times. Below 1400 m there is hardly any snow on the ground. Gliding snow activity has receded.

Weather

Tonight, predominantly overcast skies with rainfall/snow showers (5 cm of fresh snow at high altitudes), tapering off during the night, snowfall level 1500-1800 m.

On Sunday, adequate visibility, residual fog in the morning, later on cloudbanks will pass through, the peaks will remain in the clear, intermittent sunshine, light-to-moderate W/NW winds. At 2000 m: -3 to +3 degrees.

Outlook

On Monday following a night of overcast skies with rainfall, snowfall above 1500-2000 m, cloudiness will continue during the daytime, hardly any sunshine expected. Avalanche danger levels are not expected to change significantly.

Translated by Jeffrey McCabe, www.creativtrans.com

Avalanche problems



Danger ratings



Expositions

