

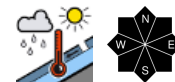
Rainfall/snowfall/graupel showers + strong NW winds



Großenedigergruppe Nord, Glocknergruppe Nord, Loferer und Leoganger Steinberge, Goldberggruppe Nord, Goldberggruppe Alpenhauptkamm, Glocknergruppe Alpenhauptkamm, Großenedigergruppe Alpenhauptkamm, Steinernes Meer, Hochkönig, Hagengebirge, Göllstock, Ankogelgruppe, Muhr, Niedere Tauern Süd



Untersbergstock, Osterhorngruppe, Gamsfeldgruppe, Chiemgauer Alpen, Heutal, Reiteralpe, Pongauer Grasberge, Dientner Grasberge, Niedere Tauern Nord, Nockberge, Kitzbüheler Alpen, Glemmtal, Tennengebirge, Gosaukamm, Oberpinzgauer Grasberge, Niedere Tauern Alpenhauptkamm



Avalanche problems



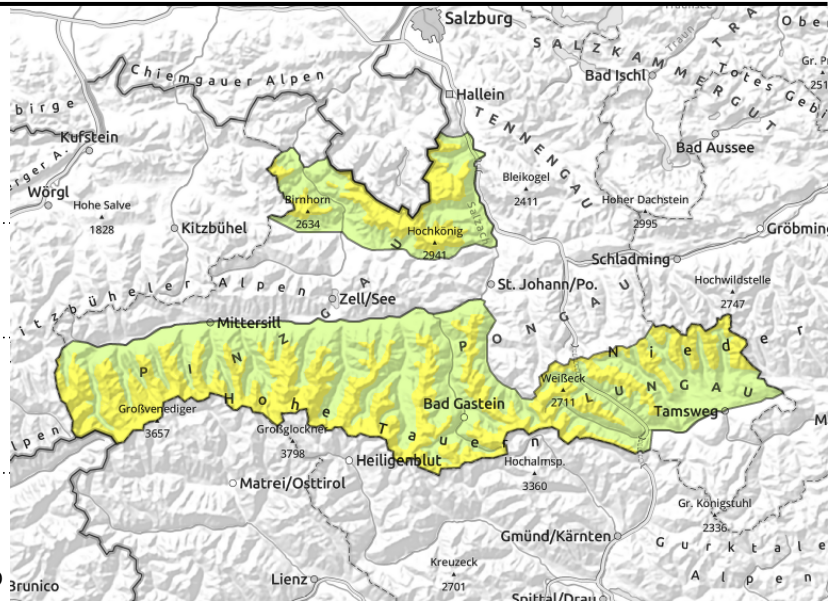
Danger ratings



Expositions



Großvenedigergruppe Nord, Glocknergruppe Nord, Loferer und Leoganger Steinberge, Goldberggruppe Nord, Goldberggruppe Alpenhauptkamm, Glocknergruppe Alpenhauptkamm, Großvenedigergruppe Alpenhauptkamm, Steinernes Meer, Hochkönig, Hagengebirge, Göllstock, Ankogelgruppe, Muhr, Niedere Tauern Süd



fresh/older drifts + local persistent weak layer at high altitudes



below 2000 m, small wet-snow avalanches, isolated glide-snow avalanches on very steep sunny slopes

Beware snowdrifts at high altitudes

Avalanche danger above 2200 m is moderate, below that altitude danger is low.

Snowdrifts generated on Tuesday can still trigger a small slab avalanche, in isolated cases medium-sized, the drifts are easy to recognize, lying deposited both near to and distant from ridgelines, behind discontinuities and in gullies. The foehn-induced drifts from last weekend are unlikely to trigger. Most danger zones are on N/E facing slopes, in high-alpine regions also on south-facing slopes. Above 2300 m isolated weak layers on shady slopes triggerably by large additional loading, large avalanches possible.

In steep terrain, small wet loose-snow avalanches and isolated glide-snow avalanches are possible.

Snowpack structure

Atop a superficially moistened snowpack (up to 2500 m), often melt-freeze encrusted, 5-10 cm of fresh snow lie deposited, often riddled with graupel. Strong W/N winds will transport the fresh snow. The snowfall and snowdrifts from Tuesday were able to settle, are moistened or sticky up to 2600 m. The snowpack is highly irregular due to storm impact. The snowpack is quite irregular. Possible weak layer for a slab or loose-snow avalanches: faceted crystals on the melt-freeze layer above 2400 m. The old snowpack has been repeatedly made wet up to intermediate altitudes. Gliding snow activity has receded.

Weather

On Friday night, cloudy skies, rainfall/snowfall, snowfall level at 2000 m, dropping to 1600 m by early morning. At high altitudes, 5 cm of fresh snow expected.

On Saturday, reduced visibility, rainfall/snowfall and graupel showers passing through, snowfall above 1600-2000 m, about 5 cm expected. Most sunny phases expected in the Lungau Nockberge. The W/NW winds brisk to strong, reaching 60 km/hr. At 2000 m: 0 degrees; at 3000 m: -6 degrees.

Outlook

On Sunday, much less wind at all altitudes, only in afternoon the NW winds will reach 30-40 km/hr. Avalanche danger levels are not expected to change significantly.

Avalanche problems



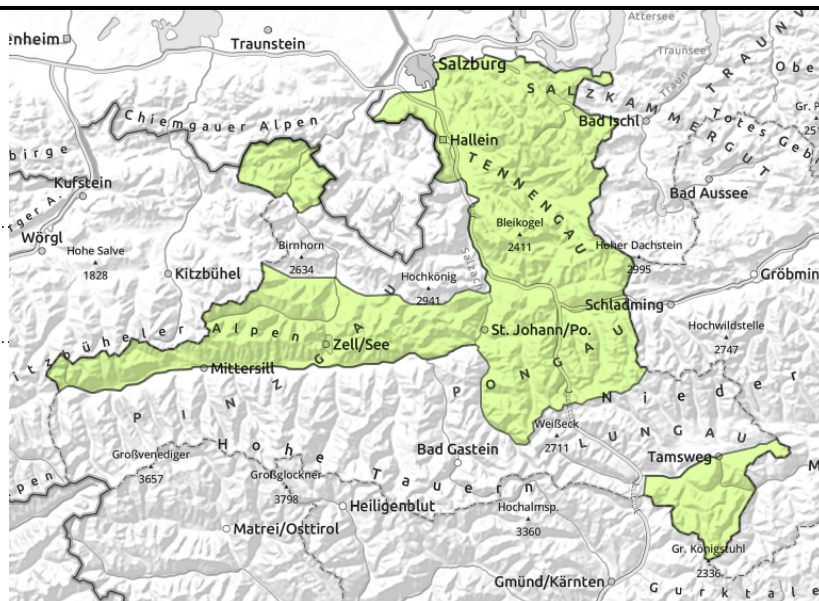
Danger ratings



Expositions



Untersbergstock, Osterhorngruppe, Gamsfeldgruppe, Chiemgauer Alpen, Heutal, Reiteralpe, Pongauer Grasberge, Dientner Grasberge, Niedere Tauern Nord, Nockberge, Kitzbüheler Alpen, Glemmtal, Tennengebirge, Gosaukamm, Oberpinzgauer Grasberge, Niedere Tauern Alpenhauptkamm



small wet-snow avalanches, isolated glide-snow avalanches

wet loose-snow avalanches triggering naturally

Avalanche danger is low. In steep terrain, small wet loose-snow avalanches and isolated glide-snow avalanches are possible.

Small snowdrift accumulations can trigger at high altitudes esp. by large additional loading. The danger of falling outweighs that of snow masses. Beware stark discontinuities in the terrain!

Snowpack structure

Atop a moist old snowpack, 5-10 cm of fresh snow will fall at high altitudes, and transported by strong W/N winds. Bonding will be favorable. At intermediate altitudes the snowpack has already been thoroughly moistened repeated times. Below 1400 m there is hardly any snow on the ground. Gliding snow activity has receded.

Weather

On Friday night, cloudy skies, rainfall/snowfall, snowfall level at 2000 m, dropping to 1600 m by early morning. At high altitudes, 5 cm of fresh snow expected.

On Saturday, reduced visibility, rainfall/snowfall and graupel showers passing through, snowfall above 1600-2000 m, about 5 cm expected. Most sunny phases expected in the Lungau Nockberge. The W/NW winds brisk to strong, reaching 60 km/hr. At 2000 m: 0 degrees.

Outlook

On Sunday, much less wind at all altitudes, only in afternoon the NW winds will reach 30-40 km/hr. Avalanche danger levels are not expected to change significantly.

Translated by Jeffrey McCabe, www.creativtrans.com

Avalanche problems



New snow



Wind drifted snow



Persistent weak layer



Wet snow



Gliding snow



Cornices



no distinct

Danger ratings



1

low



2

moderate



3

considerable



4

high



5

very high

Expositions

