

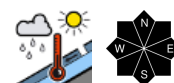
Snowdrifts up above, wet snow down below



2400 m
 Großenedigergruppe Nord, Glocknergruppe Nord, Loferer und Leoganger Steinberge, Goldberggruppe Nord, Goldberggruppe Alpenhauptkamm, Glocknergruppe Alpenhauptkamm, Großenedigergruppe Alpenhauptkamm, Steinernes Meer, Hochkönig, Hagengebirge, Göllstock, Ankogelgruppe, Muhr, Niedere Tauern Süd



Untersbergstock, Osterhorngruppe, Gamsfeldgruppe, Chiemgauer Alpen, Heutal, Reiteralpe, Pongauer Grasberge, Dientner Grasberge, Niedere Tauern Nord, Nockberge, Kitzbüheler Alpen, Glemmtal, Tennengebirge, Gosaukamm, Oberpinzgauer Grasberge, Niedere Tauern Alpenhauptkamm



Avalanche problems



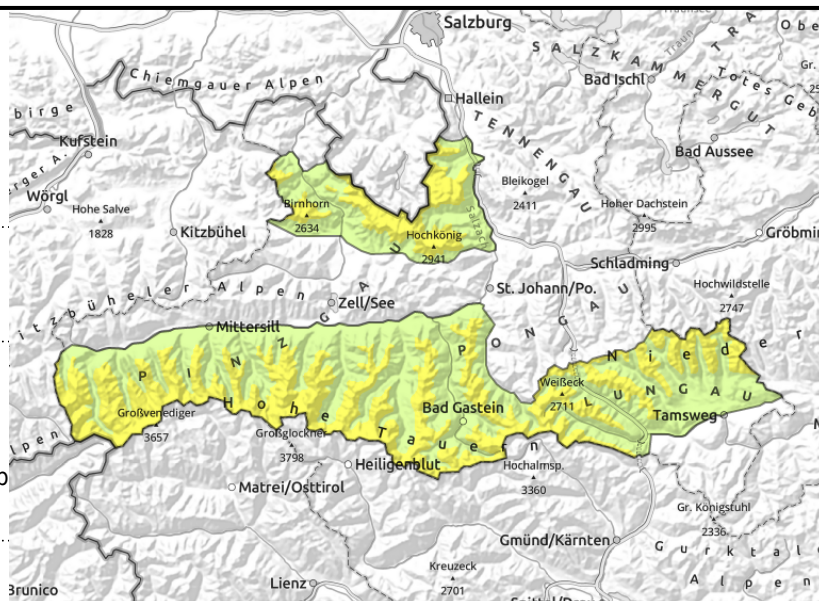
Danger ratings



Expositions



Großvenedigergruppe Nord, Glocknergruppe Nord, Loferer und Leoganger Steinberge, Goldberggruppe Nord, Goldberggruppe Alpenhauptkamm, Glocknergruppe Alpenhauptkamm, Großvenedigergruppe Alpenhauptkamm, Steinernes Meer, Hochkönig, Hagengebirge, Göllstock, Ankogelgruppe, Muhr, Niedere Tauern Süd



2400 m



above 2400 m, drifts from Tuesday + small persistent weak layer at high altitudes with foehn-induced drifts on top of it



below 2600 m, small wet-snow avalanches, mostly loose, isolated glide-snow avalanches

Moderate snowdrift problem

Avalanche danger above 2400 m is moderate, below that altitude danger is low.

Snowdrifts generated on Tuesday can still trigger a small slab avalanche, in isolated cases medium-sized, the drifts are easy to recognize, lying deposited both near to and distant from ridgelines, behind discontinuities and in gullies. The foehn-induced drifts from last weekend are unlikely to trigger. Most danger zones are on N/E facing slopes, in high-alpine regions also on south-facing slopes. Above 2300 m isolated weak layers on shady slopes triggerable by large additional loading, large avalanches possible.

In steep terrain, small wet loose-snow avalanches and isolated glide-snow avalanches are possible.

Snowpack structure

The snowfall and snowdrifts from Tuesday were able to settle, are moistened or sticky up to 2400 m. The snowpack is highly irregular due to storm impact. Beneath the latest snow and drifts is a melt-freeze crust (yellowish-hued). Possible weak layer for a slab or loose-snow avalanches: faceted crystals on the melt-freeze layer. The old snowpack has been repeatedly made wet up to intermediate altitudes.

Weather

Sunshine will be seldom, often hampered by clouds passing through, creating diffuse light conditions. Towards evening, frequent rain showers, snowfall above 2000 m. Light to moderate westerly winds. At 2000 m: 2-5 degrees; at 3000 m: -4 degrees.

Outlook

On Saturday, fresh snowfall and winds will generate fresh drifts.

Avalanche problems



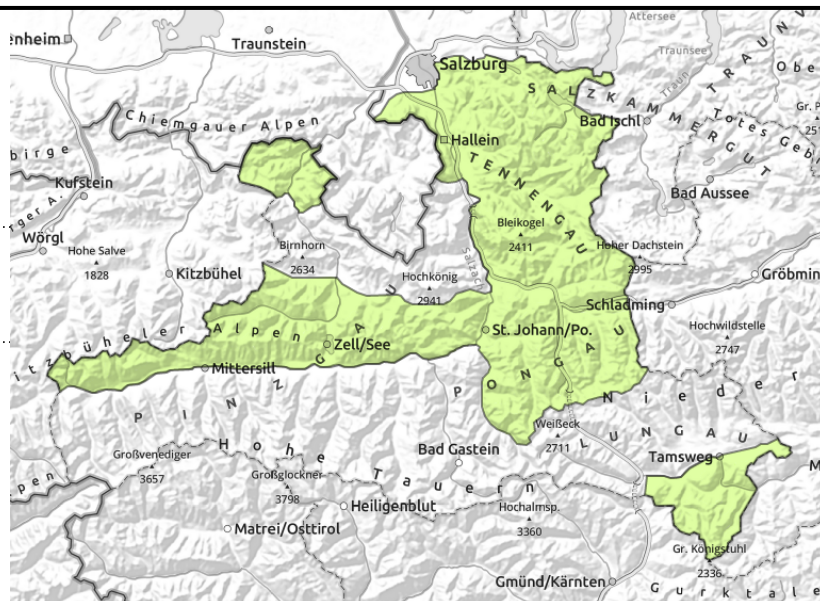
Danger ratings



Expositions



Untersbergstock, Osterhorngruppe, Gamsfeldgruppe, Chiemgauer Alpen, Heutal, Reiteralpe, Pongauer Grasberge, Dientner Grasberge, Niedere Tauern Nord, Nockberge, Kitzbüheler Alpen, Glemmtal, Tennengebirge, Gosaukamm, Oberpinzgauer Grasberge, Niedere Tauern Alpenhauptkamm



small wet-snow avalanches, isolated glide-snow avalanches

Moistened snowpack, also amid diffuse light conditions

Avalanche danger is low.

In steep terrain, small wet loose-snow avalanches and isolated glide-snow avalanches are possible. Small snowdrift accumulations can trigger at high altitudes esp. by large additional loading. The danger of falling outweighs that of snow masses.

Snowpack structure

Melt-freeze crust in early morning, later on the snow will get sticky-to-wet atop a stable base. At intermediate altitudes the snowpack has already been thoroughly moistened repeated times. Below 1400 m there is hardly any snow on the ground.

Weather

Sunshine will be seldom, often hampered by clouds passing through, creating diffuse light conditions. Towards evening, frequent rain showers, snowfall above 2000 m. Light to moderate westerly winds. At 2000 m: 2-5 degrees.

Outlook

On Saturday, fresh snowfall and winds will generate fresh drifts.

Translated by Jeffrey McCabe, www.creativtrans.com

Avalanche problems



New snow



Wind drifted snow



Persistent weak layer



Wet snow



Gliding snow



Cornices



no distinct

Danger ratings



1

low



2

moderate



3

considerable



4

high



5

very high

Expositions

