













## Fresh snowdrifts are trigger-prone

|  |        |  |   |
|--|--------|--|---|
|  | 2000 m | Großvenedigergruppe Nord, Glocknergruppe Nord, Goldberggruppe Nord, Ankogelgruppe, Muhr, Oberpinzgauer Grasberge, Niedere Tauern Alpenhauptkamm, Niedere Tauern Süd, Niedere Tauern Nord |    |
|  | 2200 m | Nockberge, Loferer und Leoganger Steinberge, Steinernes Meer, Hochkönig, Hagengebirge, Göllstock, Tennengebirge, Gosaukamm   |    |
|  |        | Untersbergstock, Osterhorngruppe, Gamsfeldgruppe, Chiemgauer Alpen, Heutal, Reiteralpe, Kitzbüheler Alpen, Glemmtal, Dientner Grasberge, Pongauer Grasberge                              |    |
|  | 2000 m | Großvenedigergruppe Alpenhauptkamm, Glocknergruppe Alpenhauptkamm, Goldberggruppe Alpenhauptkamm   |    |

### Avalanche problems



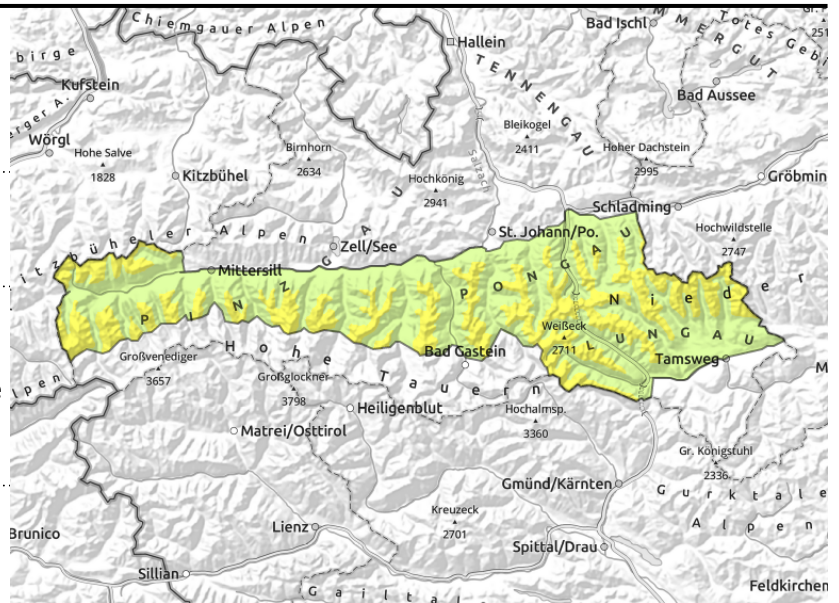
### Danger ratings



### Expositions



**Großvenedigergruppe Nord, Glocknergruppe Nord, Goldberggruppe Nord, Ankogelgruppe, Muhr, Oberpinzgauer Grasberge, Niedere Tauern Alpenhauptkamm, Niedere Tauern Süd, Niedere Tauern Nord**



in gullies, steep bowls, behind discontinuities, near to and distant from ridges, triggerable in transitions from shallow to deep snow

on steep grass-covered slopes, possible at any time of day or night, increasing with rain impact

## Fresh snowdrift accumulations trigger-prone

Avalanche danger above 2000 m is moderate, below that altitude danger is low.

Freshly generated snowdrift accumulations can be triggered by 1 person in some places, releases often medium-sized, esp. on Main Alpine Ridge. Danger zones increase with ascending altitude, occur near steep ridgelines and in gullies and bowls in all aspects. Snowdrifts are easy to recognize, should be circumvented.

There is still latent danger of glide-snow avalanches, most releases medium-sized, occasionally larger. Due to solar radiation, loose-snow avalanches can be expected in extremely steep terrain in the afternoon, mostly small releases.

## Snowpack structure

Due to southerly foehn wind, fresh snowdrift accumulations have been generated, deposited atop a soft surface above 2000 m. Above 2300 m both blanketed surface hoar and faceted crystals near crusts can serve as weak layers, esp. on W/N/E facing slopes. At intermediate altitudes the snowpack is thoroughly moist and compact.

## Weather

During the night, stormy southerly winds will be blowing, rainfall/snowfall near the Tauern. On the Main Alpine Ridge 3-10 cm of fresh snow expected, transported and deposited highly irregularly. After midnight, winds will slacken off. On Monday, partly sunny, alternating with clouds, convective cloud build-up later in the day, the peaks often shrouded in clouds, a bit of minor snowfall/rainfall is possible, snowfall level at 1500 m. Light to moderate winds from varying directions. At 2000 m: -2 degrees; at 3000 m: -9 degrees.

## Outlook

Avalanche danger levels are not expected to change significantly.

### Avalanche problems



### Danger ratings



### Expositions



**Nockberge, Loferer und Leoganger Steinberge,  
 Steinernes Meer, Hochkönig, Hagengebirge,  
 Göllstock, Tennengebirge, Gosaukamm**



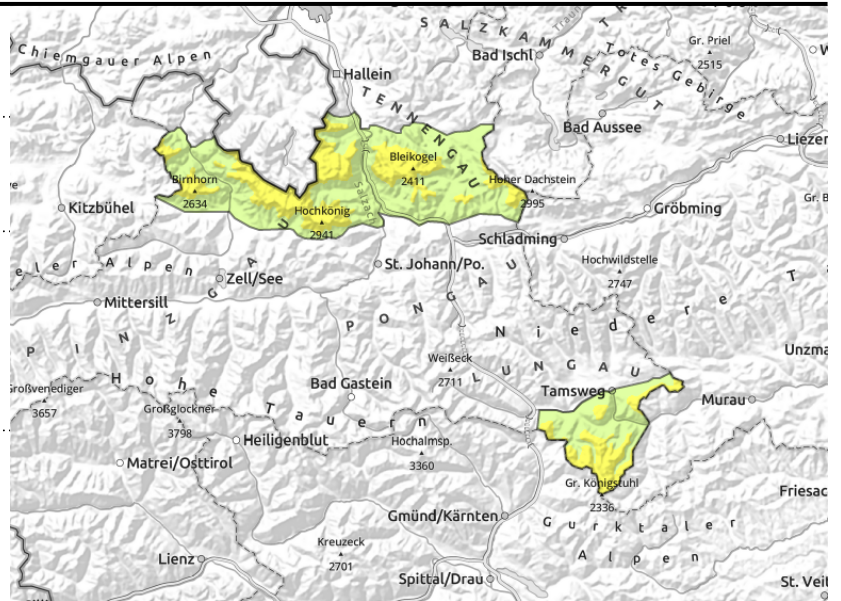
2200 m



in gullies, steep bowls, behind discontinuities, near to and distant from ridges, in transitions from shallow to deep snow



possible at any time of day or night



**Pay close heed to snowdrifts**

Avalanche danger is moderate above 2000 m.

Snowdrift accumulations triggerable by 1 person in some danger zones, releases mostly small.

Danger of falling outweighs that of snow masses. Danger zones increase with ascending altitude, occur in steep gullies, bowls on NW/N/E facing slopes. Drifts are easily recognized, should be avoided. There is still latent danger of glide-snow avalanches, medium sized releases are possible on high-altitude slopes.

Due to solar radiation, loose-snow avalanches can be expected in extremely steep terrain in the afternoon, mostly small releases.

**Snowpack structure**

The surface shows marked effects of wind impact, the drifts were deposited atop soft layer on north-facing slopes. There is still a loose surface only on north-facing wind-protected slopes. At intermediate altitudes the snowpack has become moist repeated times and is very compact. Below 1400 m there is hardly any snow on the ground.

**Weather**

During the night, stormy southerly winds will be blowing, rainfall/snowfall near the Nockberge. On the Main Alpine Ridge 3-10 cm of fresh snow expected, transported and deposited highly irregularly. After midnight, winds will slacken off. On Monday, partly sunny, alternating with clouds, convective cloud build-up later in the day, the peaks often shrouded in clouds, a bit of minor snowfall/rainfall is possible, snowfall level at 1500 m. Light to moderate winds from varying directions. At 2000 m: -2 degrees; at 3000 m: -9 degrees.

**Outlook**

Avalanche danger levels will gradually recede.

**Avalanche problems**



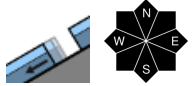
**Danger ratings**



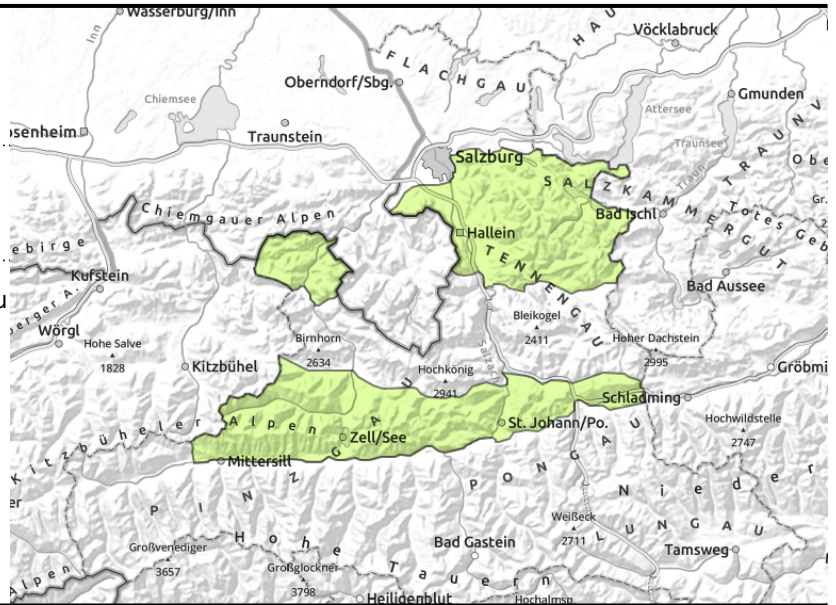
**Expositions**



**Untersbergstock, Osterhorngruppe,  
Gamsfeldgruppe, Chiemgauer Alpen, Heutal,  
Reiteralpe, Kitzbüheler Alpen, Glemmtal, Dientner  
Grasberge, Pongauer Grasberge**



aus extrem steilem Gelände, zu  
jeder Tageszeit möglich



## Pay close heed to gliding snow

Avalanche danger is low. On extremely steep grass-covered slopes isolated small glide-snow avalanches are possible, medium-sized seldom.

There is still latent danger of glide-snow avalanches, most releases medium-sized, occasionally larger. Small snowdrift accumulations can be triggered by 1 person in few places. Danger of taking a fall outweighs that of snow masses.

Due to solar radiation, small loose-snow avalanches are possible on extremely steep slopes, esp. in the afternoon.

## Snowpack structure

The surface shows marked effects of wind impact, the drifts were deposited atop soft layer on north-facing slopes. There is still a loose surface only on north-facing wind-protected slopes. At intermediate altitudes the snowpack has become moist repeated times and is very compact. Below 1400 m there is hardly any snow on the ground.

## Weather

During the night, stormy southerly winds will be blowing, rainfall/snowfall near the Tauern. After midnight, winds will slacken off. On Monday, partly sunny, alternating with clouds, convective cloud build-up later in the day, the peaks often shrouded in clouds, a bit of minor snowfall/rainfall is possible, snowfall level at 1500 m. Light to moderate winds from varying directions. At 2000 m: -2 degrees.

## Outlook

Avalanche danger levels are not expected to change significantly.

### Avalanche problems



### Danger ratings



### Expositions



**Großvenedigergruppe Alpenhauptkamm,  
 Glocknergruppe Alpenhauptkamm, Goldberggruppe  
 Alpenhauptkamm**



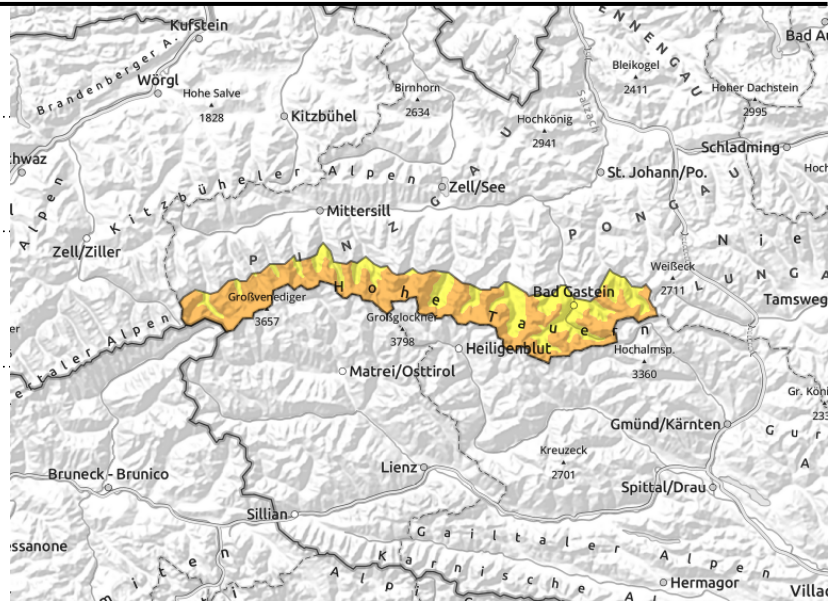
2000 m



behind discontinuities, near to  
 and distant from ridges, in  
 gullies, steep bowls



on steep grass-covered slopes,  
 possible at any time of day or  
 night



**Heed: fresh snowdrifts and persistent weak layer at high altitudes**

Avalanche danger above 2000 m is CONSIDERABLE (3), below that altitude danger is moderate. Fresh snowdrift accumulations above 2000 m can be triggered in some danger zones by 1 person and grow to medium size. Danger zones increase with ascending altitude, occur esp. behind discontinuities and in gullies and bowls in all aspects. Drifts are easy to recognize and should be avoided.

Above 2300 m there are near-surface weak layers in the snowpack, triggerable in some places by 1 person, large-sized releases possible, esp. on very steep shady slopes.

There is continuing latent danger of glide-snow avalanches, usually medium-sized, occasionally larger.

**Snowpack structure**

Due to southerly foehn wind, fresh snowdrift accumulations have been generated, deposited atop a soft surface above 2000 m. Above 2300 m both blanketed surface hoar and faceted crystals near crusts can serve as weak layers, esp. on W/N/E facing slopes. At intermediate altitudes the snowpack is thoroughly moist and compact.

**Weather**

During the night, stormy southerly winds will be blowing, rainfall/snowfall near the Tauern. On the Main Alpine Ridge 3-10 cm of fresh snow expected, transported and deposited highly irregularly. After midnight, winds will slacken off. On Monday, partly sunny, alternating with clouds, convective cloud build-up later in the day, the peaks often shrouded in clouds, a bit of minor snowfall/rainfall is possible, snowfall level at 1500 m. Light to moderate winds from varying directions. At 2000 m: -2 degrees; at 3000 m: -9 degrees.

**Outlook**

Avalanche danger levels are not expected to change significantly.

Translated by Jeffrey McCabe, [www.creativtrans.com](http://www.creativtrans.com)

**Avalanche problems**



**Danger ratings**



**Expositions**

