

Fresh snowdrifts along Main Alpine Ridge are trigger-prone

	2200 m Großvenedigergruppe Nord, Glocknergruppe Nord, Glocknergruppe Alpenhauptkamm, Goldberggruppe Nord, Goldberggruppe Alpenhauptkamm, Ankogelgruppe, Muhr, Oberpinzgauer Grasberge	
	Loferer und Leoganger Steinberge, Tennengebirge, Gosaukamm, Dientner Grasberge, Pongauer Grasberge, Niedere Tauern Nord, Niedere Tauern Süd, Nockberge, Steinernes Meer, Hochkönig, Hagengebirge, Göllstock, Kitzbüheler Alpen, Glemmtal, Niedere Tauern Alpenhauptkamm	
	Untersbergstock, Osterhorngruppe, Gamsfeldgruppe, Chiemgauer Alpen, Heutal, Reiteralpe	
	2400 m Großvenedigergruppe Alpenhauptkamm	

Avalanche problems



Danger ratings



Expositions



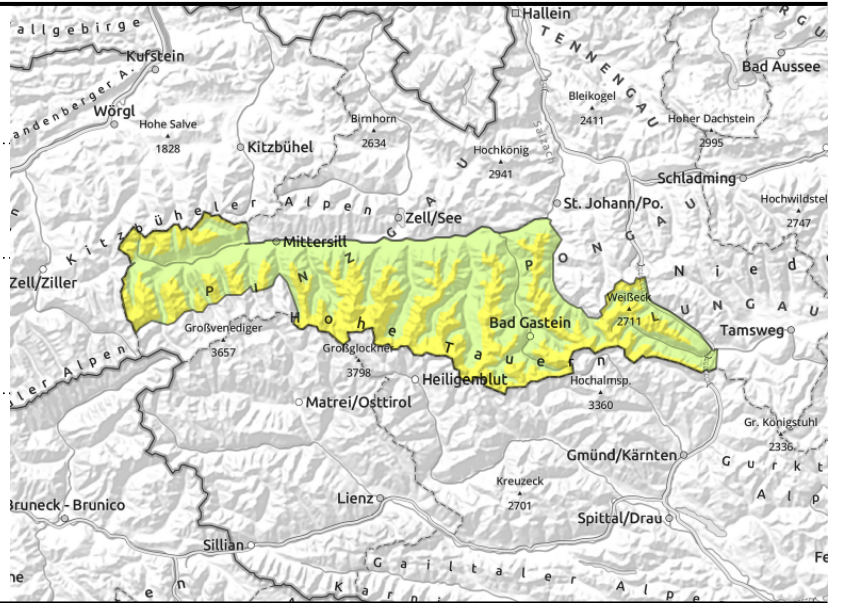
**Großvenedigergruppe Nord, Glocknergruppe Nord,
 Glocknergruppe Alpenhauptkamm, Goldberggruppe
 Nord, Goldberggruppe Alpenhauptkamm,
 Ankogelgruppe, Muhr, Oberpinzgauer Grasberge**



gullies, steep bowls, behind discontinuities, near to and distant from ridges



on steep grass-covered slopes, possible at any time of day or night, increasing with rain impact



Fresh snowdrift accumulations trigger-prone

Avalanche danger above 2200 m is moderate.

Freshly generated snowdrift accumulations can be triggered by 1 person in some places, releases often medium-sized. Danger zones increase with ascending altitude, occur near steep ridgelines and in gullies and bowls in W/N/E facing terrain. Snowdrifts are easy to recognize, should be circumvented.

There is still latent danger of glide-snow avalanches, most releases medium-sized, occasionally larger. Due to solar radiation, loose-snow avalanches can be expected in extremely steep terrain in the afternoon, mostly small releases.

Snowpack structure

Due to southerly foehn wind, fresh snowdrift accumulations will be generated, deposited atop a soft surface above 2200 m. Above 2400 m both blanketed surface hoar and faceted crystals near crusts can serve as weak layers, esp. on W/N/E facing slopes. At intermediate altitudes the snowpack is thoroughly moist and compact.

Weather

Last showers will soon end, skies will become clear. South of the Main Alpine Ridge the clouds will persist, minor snowfall is still possible. On Friday, sunshine from morning till night. Along the Tauern clouds will move in from the south, can hamper visibility, a bit of snowfall is possible. Winds will be moderate, intensify later in the day. At high altitudes of the Tauern, winds will be southerly, reach speeds of 50 km/hr. At 2000 m: -7 to -4 degrees; at 3000 m: -12 to -10 degrees.

Outlook

Avalanche danger levels are not expected to change significantly.

Avalanche problems



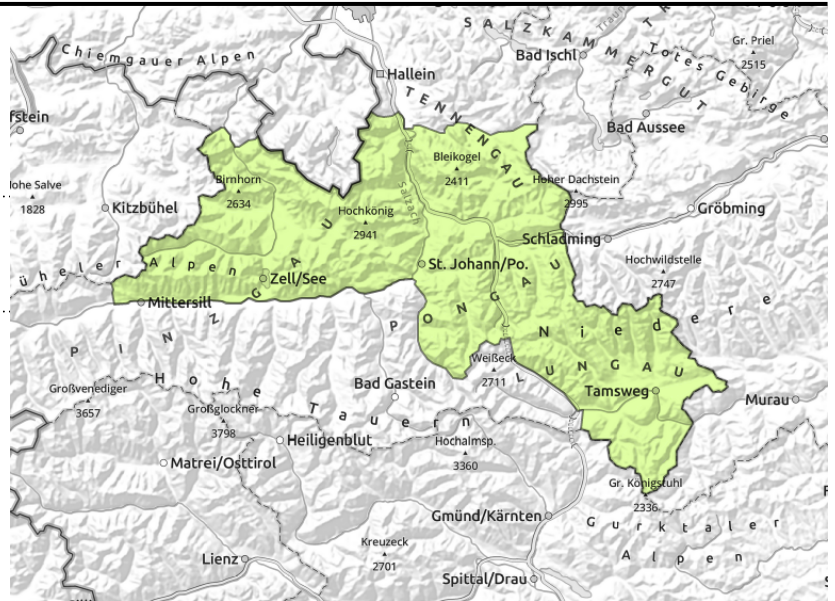
Danger ratings



Expositions



Loferer und Leoganger Steinberge, Tennengebirge, Gosaukamm, Dientner Grasberge, Pongauer Grasberge, Niedere Tauern Nord, Niedere Tauern Süd, Nockberge, Steinernes Meer, Hochkönig, Hagengebirge, Göllstock, Kitzbüheler Alpen, Glemmtal, Niedere Tauern Alpenhauptkamm



in steep grass-covered terrain, possible at any time of day or night

Avoid zones below glide cracks.

Avalanche danger is low. Small snowdrift accumulations can be triggered by 1 person in a few danger zones, releases mostly small.

Small snowdrift accumulations can be triggered by 1 person in some places. Consider the danger of falling!

There is latent danger of glide-snow avalanches, sometimes reaching medium size.

Due to solar radiation in the afternoon, small loose-snow avalanches possible in extremely steep terrain.

Snowpack structure

Above 2000 m on shady slopes there is 10 cm of loose snow atop a crust capable of bearing loads. Beneath this and on sunny slopes at all altitudes the fresh snow from Wednesday is already moist and has formed a new crust. At intermediate altitudes the snowpack has become thoroughly moist repeated times and is very compact. Below 1400 m there is hardly any snow on the ground.

Weather

Last showers will soon end, skies will become clear. South of the Main Alpine Ridge the clouds will persist, minor snowfall is still possible. On Friday, sunshine from morning till night. Along the Tauern clouds will move in from the south, can hamper visibility, a bit of snowfall is possible. Winds will be moderate, intensify later in the day. At high altitudes of the Tauern, winds will be southerly, reach speeds of 50 km/hr. At 2000 m: -7 to -4 degrees.

Outlook

Avalanche danger levels are not expected to change significantly.

Avalanche problems



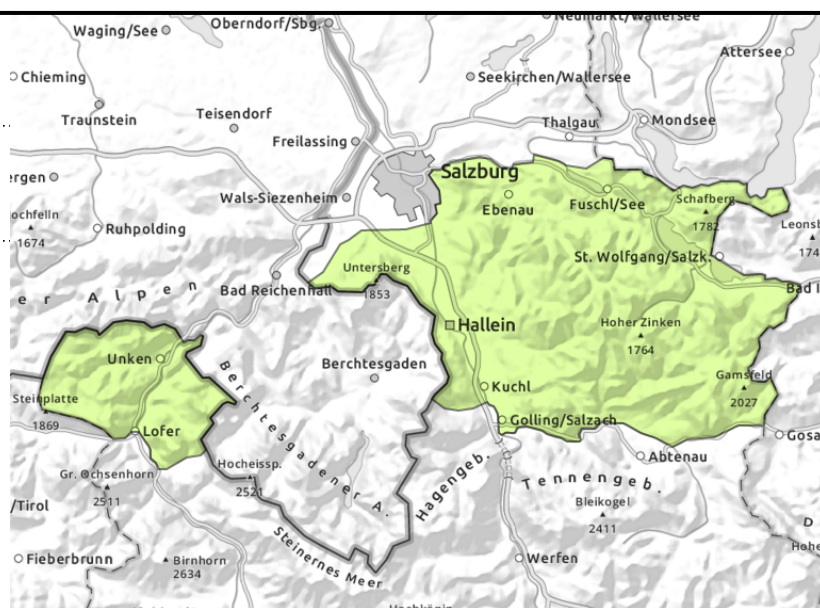
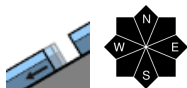
Danger ratings



Expositions



**Untersbergstock, Osterhorngruppe,
Gamsfeldgruppe, Chiemgauer Alpen, Heutal,
Reiteralpe**



Stable snowpack

Avalanche danger is low. On extremely steep grass-covered slopes isolated small glide-snow avalanches are possible, but seldom.

Snowpack structure

At intermediate altitudes the snowpack has become thoroughly moist repeated times and is very compact. In all aspects there is a melt-freeze crust capable of bearing loads. Below 1600 m there is hardly any snow on the ground.

Weather

Last showers will soon end, skies will become clear.

On Friday, sunshine from morning till night. The E/SE winds will be moderate, intensify later in the day. At 2000 m: -7 to -4 degrees.

Outlook

Avalanche danger levels are not expected to change significantly.

Avalanche problems



Danger ratings



Expositions



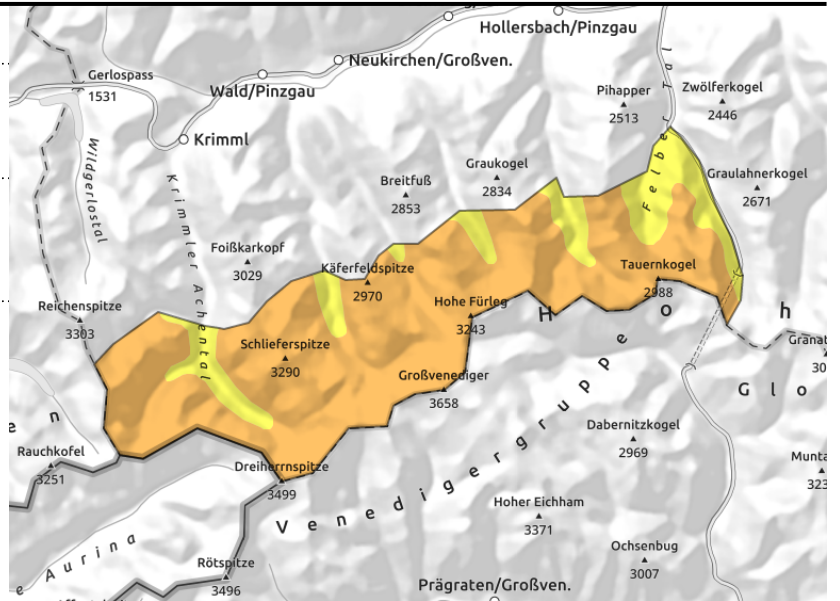
Großvenedigergruppe Alpenhauptkamm



behind discontinuities, near ridges, in gullies, steep bowls



on steep grass-covered slopes, possible at any time of day or night



Heed: fresh snowdrifts and persistent weak layer at high altitudes

Avalanche danger above 2400 m is **CONSIDERABLE**, below that altitude danger is moderate. Fresh snowdrift accumulations can be triggered in some danger zones by 1 persons and grow to medium size. Danger zones increase with ascending altitude, occur esp. behind discontinuities and in gullies and bowls on W/N/E facing slopes. Drifts are easy to recognize and should be avoided. Above 2400 m there are near-surface weak layers in the snowpack, triggerable in some places by 1 person, large-sized releases possible, esp. on very steep shady slopes. There is continuing latent danger of glide-snow avalanches, usually medium-sized, occasionally larger. Due to solar radiation in the afternoon, small loose-snow avalanches possible in extremely steep terrain.

Snowpack structure

Due to southerly foehn wind, fresh snowdrift accumulations will be generated, deposited atop a soft surface above 2200 m. Above 2400 m both blanketed surface hoar and faceted crystals near crusts can serve as weak layers, esp. on W/N/E facing slopes. At intermediate altitudes the snowpack is thoroughly moist and compact.

Weather

Last showers will soon end, skies will become clear. South of the Main Alpine Ridge the clouds will persist, minor snowfall is still possible. On Friday, sunshine from morning till night. Along the Tauern clouds will move in from the south, can hamper visibility, a bit of snowfall is possible. Winds will be moderate, intensify later in the day. At high altitudes of the Tauern, winds will be southerly, reach speeds of 50 km/hr. At 2000 m: -7 to -4 degrees; at 3000 m: -12 to -10 degrees.

Outlook

Avalanche danger levels are not expected to change significantly.

Translated by Jeffrey McCabe, www.creativtrans.com

Avalanche problems



Danger ratings



Expositions

