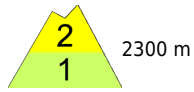
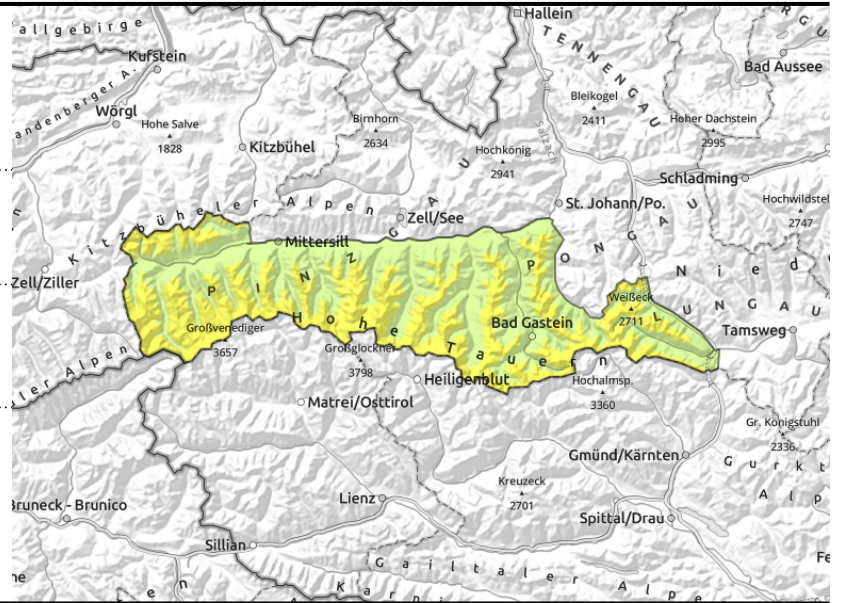




Beware high-altitude snowdrifts in western and southern regions

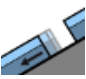

	2300 m Großvenedigergruppe Nord, Großvenedigergruppe Alpenhauptkamm, Glocknergruppe Nord, Glocknergruppe Alpenhauptkamm, Goldberggruppe Nord, Goldberggruppe Alpenhauptkamm, Ankogelgruppe, Muhr, Oberpinzgauer Grasberge	
	Loferer und Leoganger Steinberge, Tennengebirge, Gosaukamm, Dientner Grasberge, Pongauer Grasberge, Niedere Tauern Nord, Niedere Tauern Süd, Nockberge, Steinernes Meer, Hochkönig, Hagengebirge, Göllstock, Niedere Tauern Alpenhauptkamm, Kitzbüheler Alpen, Glemmtal	
	Untersbergstock, Osterhorngruppe, Gamsfeldgruppe, Chiemgauer Alpen, Heutal, Reiteralpe	

Avalanche problems 	Danger ratings 	Expositions
-------------------------------	---------------------------	------------------------

Großvenedigergruppe Nord, Großvenedigergruppe Alpenhauptkamm, Glocknergruppe Nord, Glocknergruppe Alpenhauptkamm, Goldberggruppe Nord, Goldberggruppe Alpenhauptkamm, Ankogelgruppe, Muhr, Oberpinzgauer Grasberge



  gullies, steep bowls, behind discontinuities, near ridges

  on steep grass-covered slopes, possible at any time of day or night, increasing with rain impact

Snowdrift accumulations trigger-prone

Avalanche danger above 2300 m is moderate.

Freshly generated snowdrift accumulations can be triggered by 1 person in some places, releases often medium-sized. Danger zones increase with ascending altitude, occur near steep ridgelines and in gullies and bowls.

There is still latent danger of glide-snow avalanches, most releases medium-sized, occasionally larger. Due to solar radiation, loose-snow avalanches can be expected in extremely steep terrain in the afternoon, mostly small releases.

Snowpack structure

Up to 2300 m the fresh snow is bonding well. Wherever wind transported the snow, weak layers can form inside the drifts. Above 2400 m the surface hoar is being covered.

On W/N/E facing slopes at high altitudes there are faceted layers near superficial melt-freeze crusts. The snow from Wednesday is sticky up to 2000 m, above it dry at least on shady slopes.

Weather

During the night the snowfall will taper off, snowfall level will drop to 600-800 m by morning. All in all, max. 5-10 cm of fresh snow. Winds northerly mostly light-to-moderate, gusts of 50 km/hr in Hohe Tauern. Thursday will start heavily overcast, frequent snow showers in the morning, but minor amounts. In the afternoon, clouds will start to disperse, visibility improve, winds light-to-moderate from the north. At 2000 m: -6 degrees; at 3000 m: -12 degrees.

Outlook

Avalanche danger levels are not expected to change significantly.

Avalanche problems



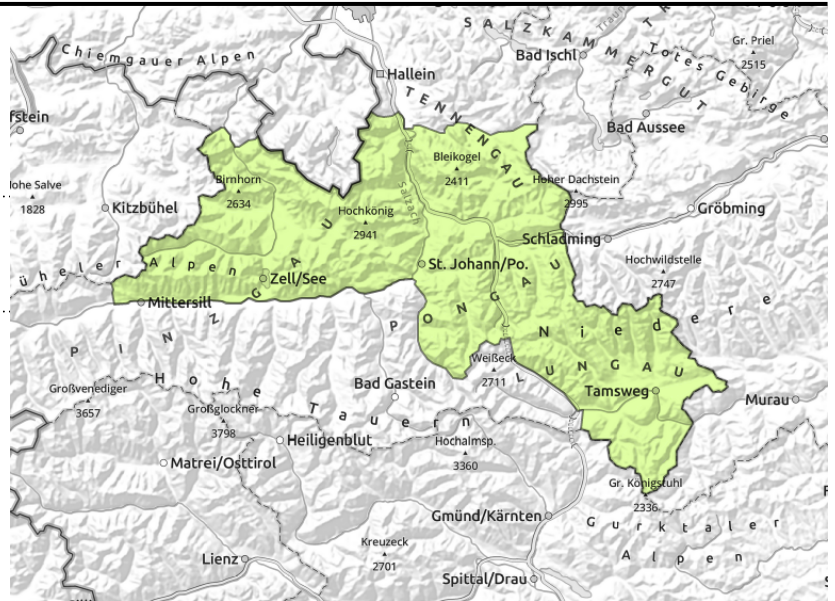
Danger ratings



Expositions



Loferer und Leoganger Steinberge, Tennengebirge, Gosaukamm, Dientner Grasberge, Pongauer Grasberge, Niedere Tauern Nord, Niedere Tauern Süd, Nockberge, Steinernes Meer, Hochkönig, Hagengebirge, Göllstock, Niedere Tauern Alpenhauptkamm, Kitzbüheler Alpen, Glemmtal



in steep grass-covered terrain, possible at any time of day or night

Avoid zones below glide cracks.

Avalanche danger is low. Small snowdrift accumulations can be triggered by 1 person in a few danger zones, releases mostly small.

There is latent danger of glide-snow avalanches, sometimes reaching medium size.

Small snowdrift accumulations can be triggered in places by minimum additional loading, releases mostly small.

Due to solar radiation in the afternoon, small loose-snow avalanches possible in extremely steep terrain.

Snowpack structure

The shallow fresh snow was deposited atop an irregular, mostly hard snowpack surface, is bonding well. At low and intermediate altitudes the snowpack is often thoroughly moist.

Weather

During the night the snowfall will taper off, snowfall level will drop to 600-800 m by morning. All in all, max. 5-10 cm of fresh snow. Winds northerly mostly light-to-moderate.

Thursday will start heavily overcast, frequent snow showers in the morning, but minor amounts. In the afternoon, clouds will start to disperse, visibility improve, winds light-to-moderate from the north. At 2000 m: -6 degrees.

Outlook

Avalanche danger levels are not expected to change significantly.

Avalanche problems



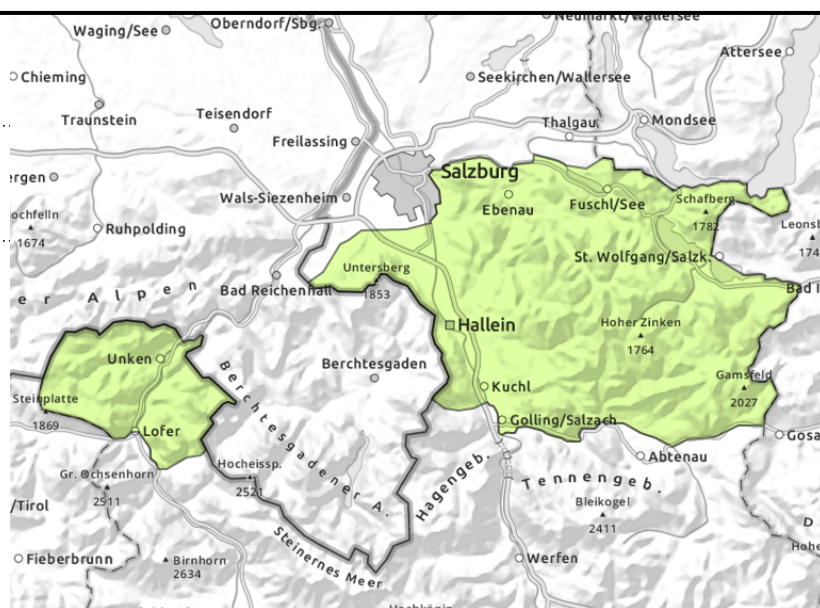
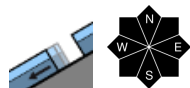
Danger ratings



Expositions



**Untersbergstock, Osterhorngruppe,
 Gamsfeldgruppe, Chiemgauer Alpen, Heutal,
 Reiteralpe**



Stable snowpack

Avalanche danger is LOW. On extremely steep grass-covered slopes isolated small glide-snow avalanches are possible, but seldom.

Snowpack structure

The snow is generally compact and stable, is often moist up to high altitudes, wet at ground level. In all aspects there is a melt-freeze crust, capable of bearing loads on south-facing slopes, on north-facing slopes breakable crusts can be expected.

Weather

During the night the snowfall will taper off, snowfall level will drop to 600-800 m by morning. All in all, max. 5-10 cm of fresh snow. Winds northerly mostly light-to-moderate. Thursday will start heavily overcast, frequent snow showers in the morning, but minor amounts. In the afternoon, clouds will start to disperse, visibility improve, winds light-to-moderate from the north. At 2000 m: -6 degrees; at 3000 m: -12 degrees.

Outlook

Avalanche danger levels are not expected to change significantly.

Translated by Jeffrey McCabe, www.creativtrans.com

Avalanche problems



Danger ratings



Expositions

