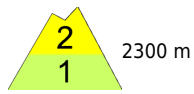
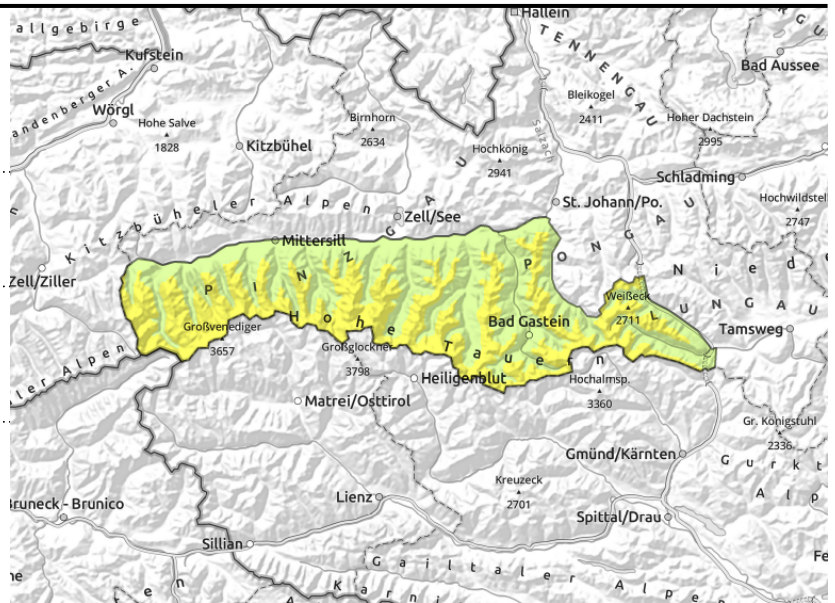


Snowdrift accumulations at high altitudes of Main Alpine Ridge still trigger-prone

	2300 m Großvenedigergruppe Nord, Großvenedigergruppe Alpenhauptkamm, Glocknergruppe Nord, Glocknergruppe Alpenhauptkamm, Goldberggruppe Nord, Goldberggruppe Alpenhauptkamm, Ankogelgruppe, Muhr	
	Loferer und Leoganger Steinberge, Steinernes Meer, Hochkönig, Hagengebirge, Göllstock, Tennengebirge, Gosaukamm, Kitzbüheler Alpen, Glemmtal, Dientner Grasberge, Pongauer Grasberge, Niedere Tauern Nord, Niedere Tauern Alpenhauptkamm, Niedere Tauern Süd, Nockberge, Oberpinzgauer Grasberge	
	Untersbergstock, Osterhorngruppe, Gamsfeldgruppe, Chiemgauer Alpen, Heutal, Reiteralpe	

Avalanche problems 	Danger ratings 	Expositions
-------------------------------	---------------------------	------------------------

Großvenedigergruppe Nord, Großvenedigergruppe Alpenhauptkamm, Glocknergruppe Nord, Glocknergruppe Alpenhauptkamm, Goldberggruppe Nord, Goldberggruppe Alpenhauptkamm, Ankogelgruppe, Muhr



above 2300 m, distant from ridges, gullies, bowls, behind discontinuities



on steep grass-covered slopes, possible at any time of day or night, increasing with rain impact

Heed high-altitude snowdrifts

Avalanche danger above 2300 m is moderate.

Freshly generated snowdrift accumulations occur mostly near ridges on very steep NW/N/NE facing slopes and in gullies and bowls and can be triggered by 1 person above 2300 m, releases often medium-sized.

There is still latent danger of glide-snow avalanches, most releases medium-sized, occasionally larger.

Snowpack structure

Fresh and older snowdrift accumulations deposited atop a moistened surface below 2300 m are often deposited atop loose surfaces which can be weak layers. On W/N/E facing slopes there are faceted layers near melt-freeze crusts which are trigger-prone in isolated cases. At low and intermediate altitudes the snowpack is already thoroughly wet down to the ground. On sunny slopes there is a melt-freeze crust, mostly capable of bearing loads, but on Tuesday it will not turn to firm snow. On shady slopes the melt-freeze crust above 1800 m is often not capable of bearing loads, breakable crusts can be expected.

Weather

Nocturnal skies will be heavily overcast but dry, a few raindrops/snowflakes cannot be excluded but will be the exception. Along the Tauern, more bright intervals. Winds will be light from varying directions.

On Tuesday, heavy clouds will pass through, sometimes hampering visibility, windows of sunshine in the interims. Isolated minor showers are possible in afternoon, with only minor results, snowfall level in northern regions at 1200 m, in southern regions at 1500 m. Winds will be light. At 2000 m: -3 to 0 degrees; at 3000 m: -8 degrees.

Outlook

On Wednesday, slightly rising avalanche danger due to fresh snow.

Avalanche problems



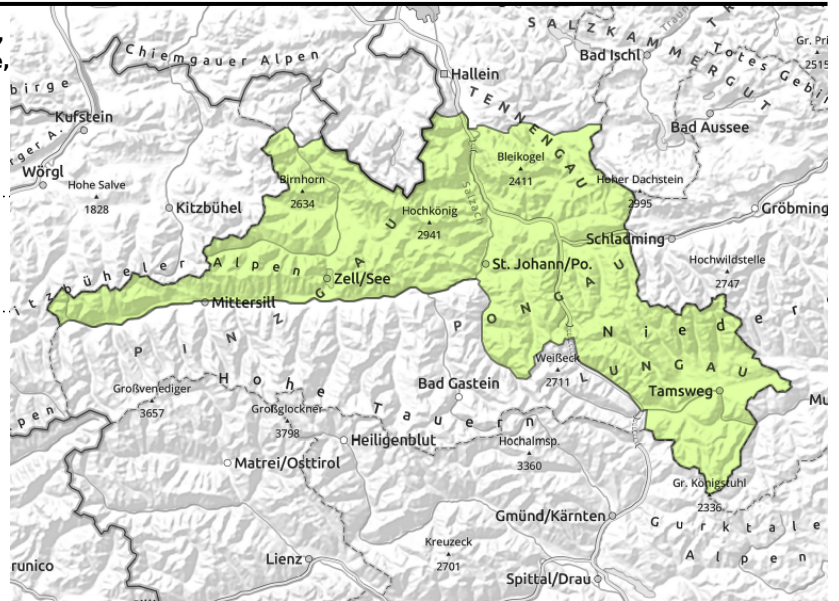
Danger ratings



Expositions



Loferer und Leoganger Steinberge, Steinernes Meer, Hochkönig, Hagengebirge, Göllstock, Tennengebirge, Gosaukamm, Kitzbüheler Alpen, Glemmtal, Dientner Grasberge, Pongauer Grasberge, Niedere Tauern Nord, Niedere Tauern Alpenhauptkamm, Niedere Tauern Süd, Nockberge, Oberpinzgauer Grasberge



in steep grass-covered terrain, possible at any time of day or night

Avoid zones below glide cracks

Avalanche danger is low. There is latent danger of glide-snow avalanches.

In steep grass-covered terrain, naturally triggered wet-snow avalanches are possible at any time.

Glide-snow avalanches are in isolated cases medium-sized.

Snowpack structure

The snowpack is quite stable and compact. Up to 2400 m there are little reserves of cold. On sunny slopes there is a melt-freeze crust which will not turn to firm on Tuesday. On north-facing slopes, breakable crusts can be expected, loose snow is rare.

Weather

Nocturnal skies will be heavily overcast but dry, a few raindrops/snowflakes cannot be excluded but will be the exception. Along the Tauern, more bright intervals. Winds will be light from varying directions.

On Tuesday, heavy clouds will pass through, sometimes hampering visibility, windows of sunshine in the interims. Isolated minor showers are possible in afternoon, with only minor results, snowfall level in northern regions at 1200 m, in southern regions at 1500 m. Winds will be light. At 2000 m: -3 to 0 degrees; at 3000 m: -8 degrees.

Outlook

On Wednesday, slightly rising avalanche danger due to fresh snow.

Avalanche problems



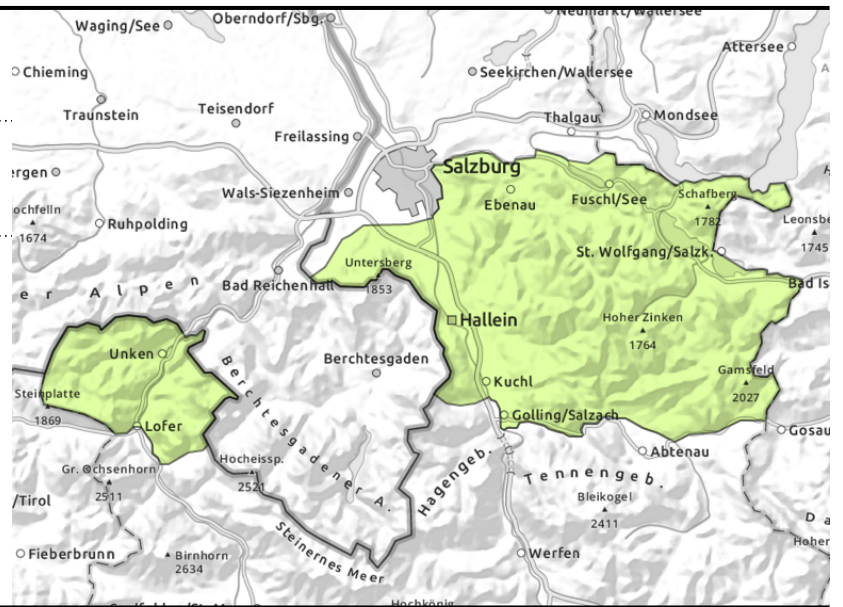
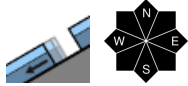
Danger ratings



Expositions



**Untersbergstock, Osterhorngruppe,
 Gamsfeldgruppe, Chiemgauer Alpen, Heutal,
 Reiteralpe**



Stable snowpack

Avalanche danger is LOW. On extremely steep grass-covered slopes isolated small glide-snow avalanches are possible, but seldom.

Snowpack structure

The is generally compact and stable, is often moist up to high altitudes, wet at ground level. In all aspects there is a melt-freeze crust, capable of bearing loads on south-facing slopes, on north-facing slopes breakable crusts can be expected.

Weather

Nocturnal skies will be heavily overcast but dry, a few raindrops/snowflakes cannot be excluded but will be the exception. Along the Tauern, more bright intervals. Winds will be light from varying directions.

On Tuesday, heavy clouds will pass through, sometimes hampering visibility, windows of sunshine in the interims. Isolated minor showers are possible in afternoon, with only minor results, snowfall level in northern regions at 1200 m, in southern regions at 1500 m. Winds will be light. At 2000 m: -3 to 0 degrees; at 3000 m: -8 degrees.

Outlook

Avalanche danger levels are not expected to change significantly.

Translated by Jeffrey McCabe, www.creativtrans.com

Avalanche problems



Danger ratings



Expositions

