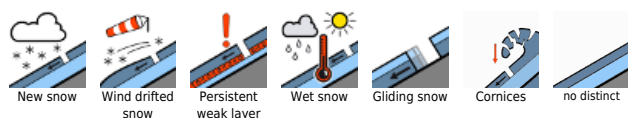


High avalanche danger in places

	1700 m	Ankogelgruppe, Muhr, Niedere Tauern Süd, Nockberge, Niedere Tauern Alpenhauptkamm	
	1900 m	Oberpinzgauer Grasberge, Kitzbüheler Alpen, Glemmtal, Dientner Grasberge, Niedere Tauern Nord, Pongauer Grasberge, Tennengebirge, Gosaukamm, Steinernes Meer, Hochkönig, Hagengebirge, Göllstock, Loferer und Leoganger Steinberge	
	forestline	Chiemgauer Alpen, Heutal, Reiteralpe, Untersbergstock, Osterhorngruppe, Gamsfeldgruppe	
	1700 m	Großvenedigergruppe Alpenhauptkamm, Großvenedigergruppe Nord, Glocknergruppe Nord, Glocknergruppe Alpenhauptkamm, Goldberggruppe Nord, Goldberggruppe Alpenhauptkamm	

Avalanche problems



Danger ratings







Expositions

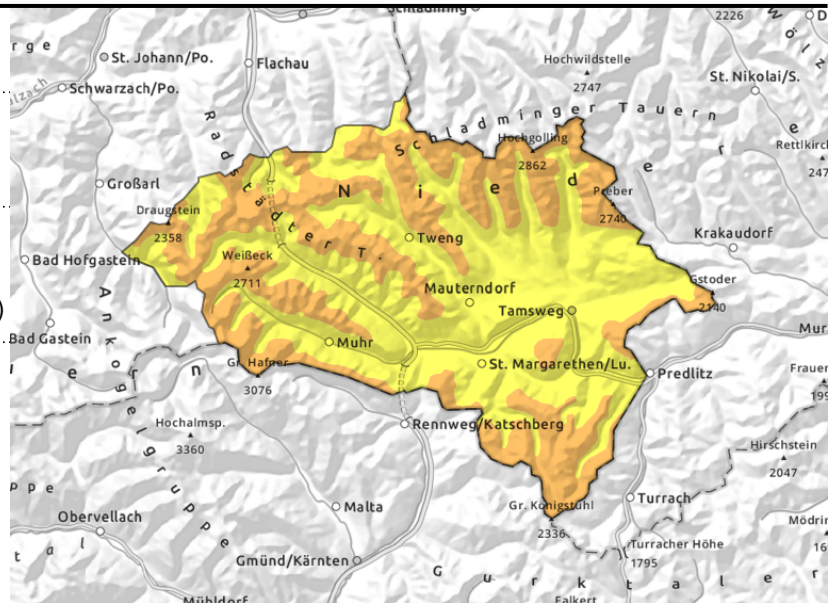


**Ankogelgruppe, Muhr, Niedere Tauern Süd,
 Nockberge, Niedere Tauern Alpenhauptkamm**



  foehn-driven snowfall easily triggered, heed danger signs (shooting cracks, snow plumes)

  on steep grass-covered slopes, possible at any time of day or night



Southerly foehn winds generating fresh snowdrifts

Avalanche danger above 1700 m is **CONSIDERABLE**, below that altitude danger is **MODERATE**. Slabs can trigger by minimum additional loading and grow to large size. Winter sports in outlying terrain require much experience and self-restraint in route selection. Heed imperative to danger signs, e.g. whumpf noises, shooting cracks, snow plumes. In steep rocky terrain, naturally triggered loose-snow avalanches are possible. Glide-snow activity below 2400 m are still a threat. Snow can glide naturally over steep smooth ground, mostly small releases but can grow to large size. Avoid zones below glide-cracks.

Snowpack structure

Atop a relatively compact old snowpack or bare ground, 30-50 cm of fresh snow was deposited, sometimes accompanied by winds. The border to the old snowpack or the ground serves as a weak layer inside the fresh fallen snow. Weak layers in the old snow are possible on north-facing slopes above 2400 m, unlikely to trigger.

Weather

On Saturday the peaks along the Main Alpine Ridge and Nockberge will be in clouds from the south, a bit of snowfall is possible, but little. The southerly winds will be strong (70 km/hr). At 2000 m: -3 degrees; at 3000 m: -10 degrees.

Outlook

On Sunday and at the beginning of the new week, southerly foehn wind will generate more snowdrifts.

Avalanche problems



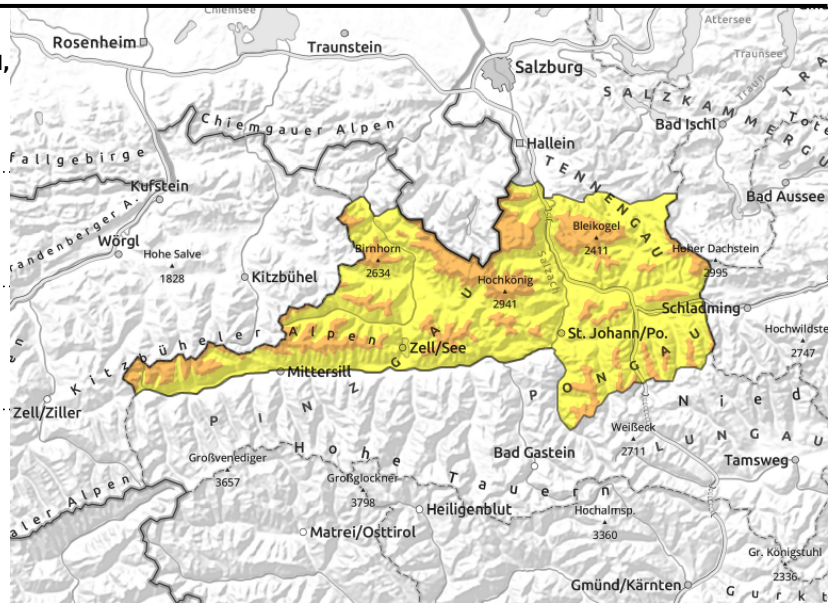
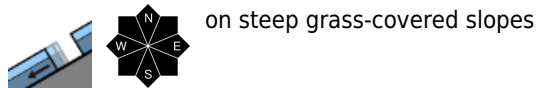
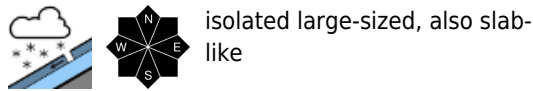
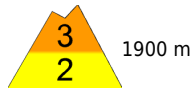
Danger ratings



Expositions



**Oberpinzgauer Grasberge, Kitzbüheler Alpen,
 Glemmtal, Dientner Grasberge, Niedere Tauern Nord,
 Pongauer Grasberge, Tennengebirge, Gosaukamm,
 Steinernes Meer, Hochkönig, Hagengebirge,
 Göllstock, Loferer und Leoganger Steinberge**



50 cm of fresh powder in places

Avalanche danger above 1900 m is **CONSIDERABLE**, below that altitude danger is **MODERATE**. The fresh snowfall from Friday can be triggered often by 1 person, both loose and slab-like snow. Avalanches can grow to large size. In steep rocky terrain, naturally triggered loose-snow avalanches are possible. Glide-snow activity below 2400 m are still a threat. Snow can glide naturally over steep smooth ground, mostly small releases but can grow to large size. Avoid zones below glide-cracks.

Snowpack structure

Atop a relatively compact old snowpack or bare ground, 30-50 cm of fresh snow was deposited, seldom accompanied by winds. Above 1300 m there is wonderful powder snow deposited atop a hard crust.

Weather

On Saturday the peaks along the Main Alpine Ridge and Nockberge will be in clouds from the south, a bit of snowfall is possible, but little. The southerly winds will be strong (70 km/hr). At 2000 m: -3 degrees; at 3000 m: -11 degrees.

Outlook

On Sunday and at the beginning of the new week, southerly foehn wind will generate more snowdrifts, increasing avalanche danger.

Avalanche problems



Danger ratings



Expositions



Chiemgauer Alpen, Heutal, Reiteralpe, Untersbergstock, Osterhorngruppe, Gamsfeldgruppe



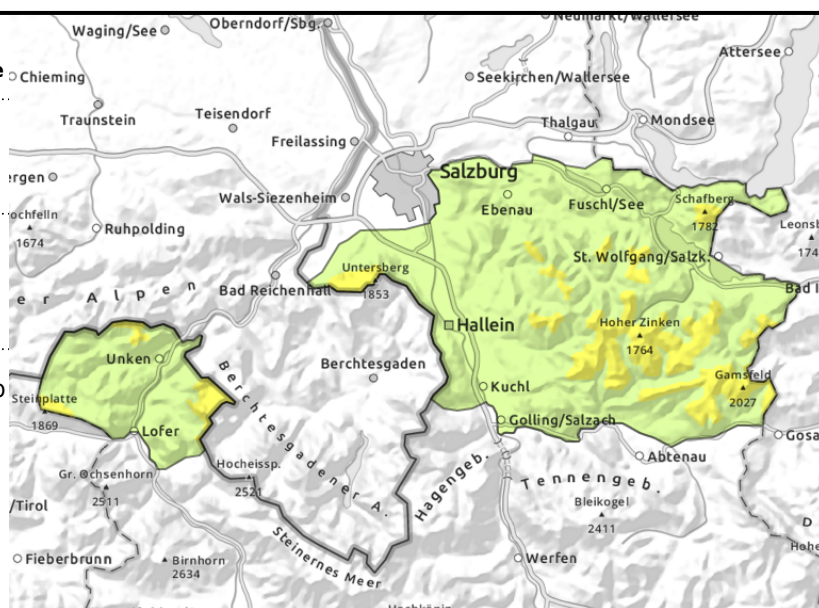
forestline



on steep grass-covered slopes, possible at any time of day or night



on extremely steep slopes, also slab-like, small-to-medium sized



Fresh snow atop stable snowpack base

Avalanche danger above the treeline is MODERATE, below that altitude danger is low. The fresh snow can trigger as glide-snow avalanches on steep grass-covered slopes. Above the treeline in extremely steep terrain, small-to-medium loose-snow avalanches or slabs can be triggered (from the fresh snow).

Snowpack structure

Atop a stable, moist snowpack or bare ground there was 10-30 cm of powder registered without much wind impact.

Weather

On Saturday the peaks along the Main Alpine Ridge and Nockberge will be in clouds from the south, a bit of snowfall is possible, but little. The southerly winds will be strong (70 km/hr). At 2000 m: -3 degrees.

Outlook

Avalanche danger levels are not expected to change significantly.

Avalanche problems



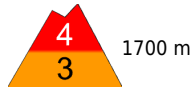
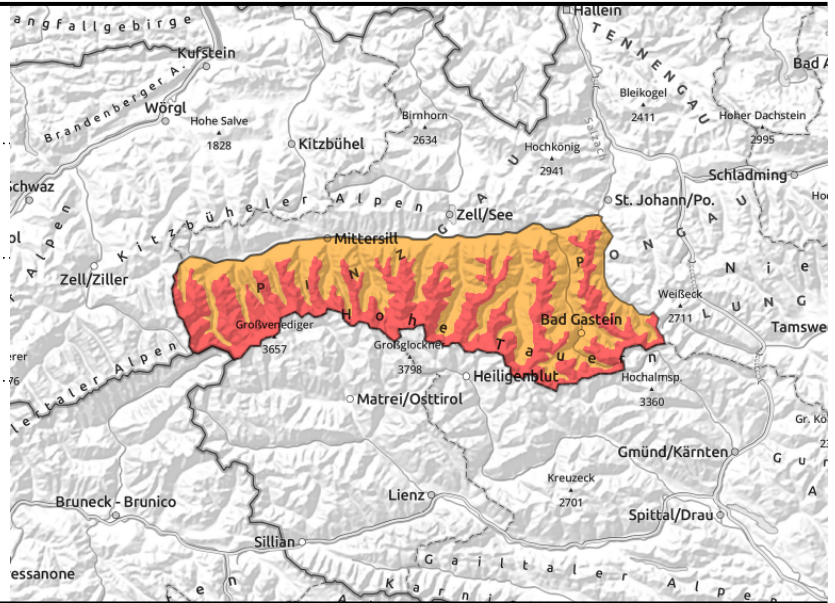
Danger ratings



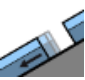

Expositions



**Großvenedigergruppe Alpenhauptkamm,
 Großvenedigergruppe Nord, Glocknergruppe Nord,
 Glocknergruppe Alpenhauptkamm, Goldberggruppe
 Nord, Goldberggruppe Alpenhauptkamm**



  easily triggered

  numerous glide-snow
 avalanches on steep grass-
 covered slopes

Southerly foehn wind generating fresh snowdrift accumulations

Avalanche danger above 1700 m is HIGH, below that altitude danger is CONSIDERABLE. Slab avalanches can be triggered by 1 person and grow to large size. Backcountry winter sports require extensive experience and much self-restraint in selecting your terrain. Pay close heed to danger signs such as whump sounds, shooting cracks and snow plumes. In steep rocky terrain, naturally triggered loose-snow avalanches are possible. Glide-snow avalanches will trigger increasingly frequently today on steep grass-covered slopes, esp. on sunny slopes. The snow can glide over smooth ground naturally. The gliding releases generally are small-to-medium but in isolated cases can be large-sized. Avoid zones below glide-cracks.

Snowpack structure

Atop a relatively compact old snowpack or bare ground, 50 to 70 cm of fresh snow has been registered, accompanied in places by wind impact. The border to the old snowpack or to the ground is often a weak layer; or else there are weak layers inside the fresh snow. Weak layers in the old snow are possible on north-facing slopes above 2400 m, but they are unlikely to trigger.

Weather

On Saturday the peaks along the Main Alpine Ridge and Nockberge will be in clouds from the south, a bit of snowfall is possible, but little. The southerly winds will be strong (70 km/hr). At 2000 m: -3 degrees; at 3000 m: -10 degrees.

Outlook

On Sunday and at the beginning of the new week, southerly foehn wind will generate more snowdrifts.

Translated by Jeffrey McCabe, www.creativtrans.com

Avalanche problems



Danger ratings



Expositions

