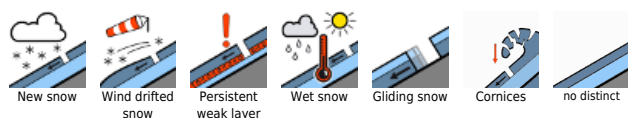


Considerable avalanche danger in some places

	<p>1700 m Großenedigergruppe Alpenhauptkamm, Glocknergruppe Alpenhauptkamm, Goldberggruppe Alpenhauptkamm, Ankogelgruppe, Muhr, Niedere Tauern Süd, Nockberge, Niedere Tauern Alpenhauptkamm</p>	
	<p>1900 m Großenedigergruppe Nord, Oberpinzgauer Grasberge, Kitzbüheler Alpen, Glemmtal, Glocknergruppe Nord, Goldberggruppe Nord, Dientner Grasberge, Niedere Tauern Nord, Pongauer Grasberge, Tennengebirge, Gosaukamm, Steinernes Meer, Hochkönig, Hagengebirge, Göllstock, Loferer und Leoganger Steinberge</p>	
	<p>forestline Chiemgauer Alpen, Heutal, Reiteralpe, Untersbergstock, Osterhorngruppe, Gamsfeldgruppe</p>	

Avalanche problems



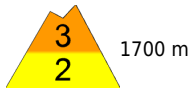
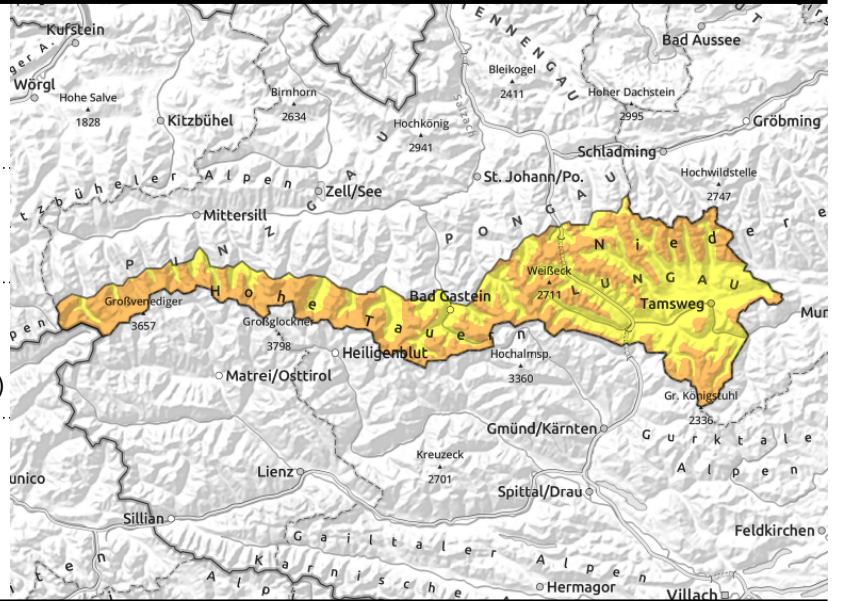
Danger ratings







Expositions



Großvenedigergruppe Alpenhauptkamm, Glocknergruppe Alpenhauptkamm, Goldberggruppe Alpenhauptkamm, Ankogelgruppe, Muhr, Niedere Tauern Süd, Nockberge, Niedere Tauern Alpenhauptkamm



  foehn-driven snowfall easily triggered, heed danger signs (shooting cracks, snow plumes)

  on steep grass-covered slopes, possible at any time of day or night

Southerly foehn winds generating fresh snowdrifts

Avalanche danger above 1700 m is **CONSIDERABLE**, below that altitude danger is **MODERATE**. Slabs can trigger by minimum additional loading and grow to large size. Winter sports in outlying terrain require much experience and self-restraint in route selection. Heed imperative to danger signs, e.g. whumpf noises, shooting cracks, snow plumes. In steep rocky terrain, naturally triggered loose-snow avalanches are possible. Glide-snow activity below 2400 m are still a threat. Snow can glide naturally over steep smooth ground, mostly small releases but can grow to large size. Avoid zones below glide-cracks.

Snowpack structure

Atop a compact old snowpack or bare ground, 30-50 cm of fresh snow was deposited, sometimes accompanied by winds. The border to the old snowpack or the ground serves as a weak layer inside the fresh fallen snow. Weak layers in the old snow are possible on north-facing slopes above 2400 m, unlikely to trigger.

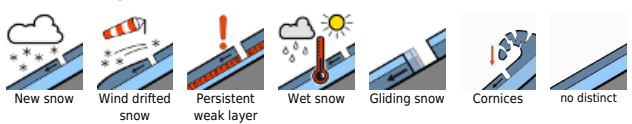
Weather

On Saturday the peaks along the Main Alpine Ridge and Nockberge will be in clouds from the south, a bit of snowfall is possible, but little. The southerly winds will be strong (70 km/hr). At 2000 m: -3 degrees; at 3000 m: -10 degrees.

Outlook

On Sunday and at the beginning of the new week, southerly foehn wind will generate more snowdrifts.

Avalanche problems



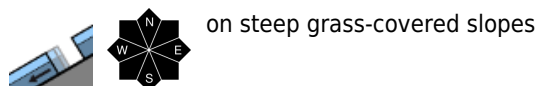
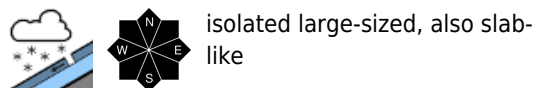
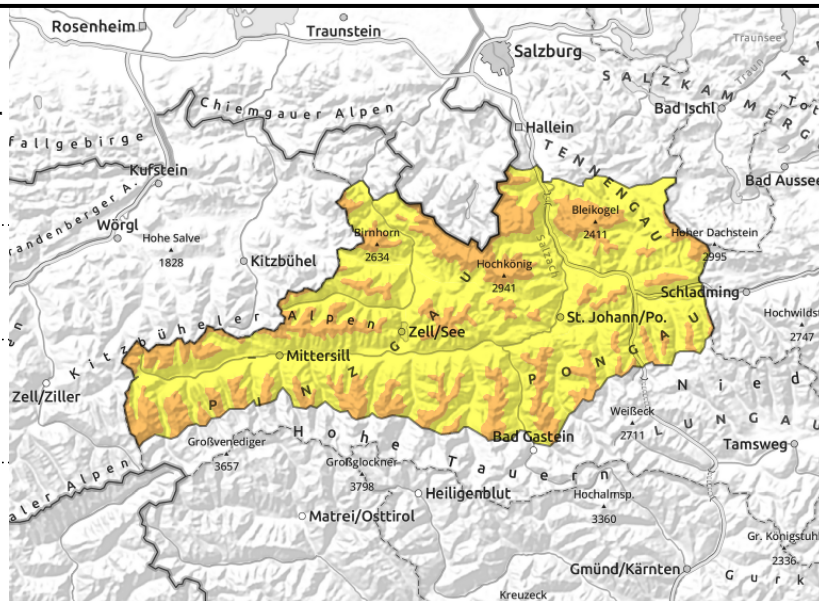
Danger ratings



Expositions



Großvenedigergruppe Nord, Oberpinzgauer Grasberge, Kitzbüheler Alpen, Glemmtal, Glocknergruppe Nord, Goldberggruppe Nord, Dientner Grasberge, Niedere Tauern Nord, Pongauer Grasberge, Tennengebirge, Gosaukamm, Steinernes Meer, Hochkönig, Hagengebirge, Göllstock, Loferer und Leoganger Steinberge



50 cm of fresh powder in places

Avalanche danger above 1900 m is **CONSIDERABLE**, below that altitude danger is low. The fresh snowfall from Friday can be triggered often by 1 person, both loose and slab-like snow. Avalanches can grow to large size. In steep rocky terrain, naturally triggered loose-snow avalanches are possible. Glide-snow activity below 2400 m are still a threat. Snow can glide naturally over steep smooth ground, mostly small releases but can grow to large size. Avoid zones below glide-cracks.

Snowpack structure

Atop a compact old snowpack or bare ground, 30-50 cm of fresh snow was deposited, seldom accompanied by winds. Above 1300 m there is wonderful powder snow deposited atop a hard crust.

Weather

On Saturday the peaks along the Main Alpine Ridge and Nockberge will be in clouds from the south, a bit of snowfall is possible, but little. The southerly winds will be strong (70 km/hr). At 2000 m: -3 degrees; at 3000 m: -11 degrees.

Outlook

On Sunday and at the beginning of the new week, southerly foehn wind will generate more snowdrifts, increasing avalanche danger.

Avalanche problems



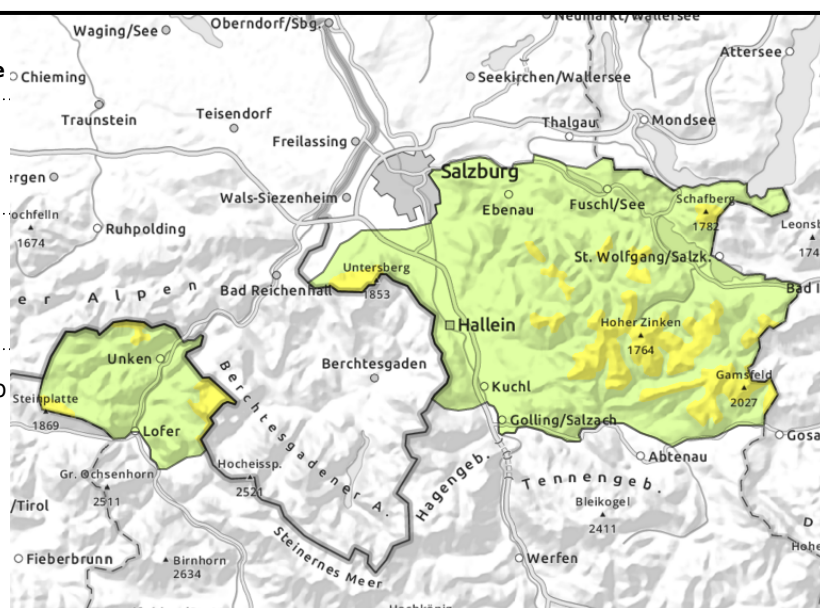
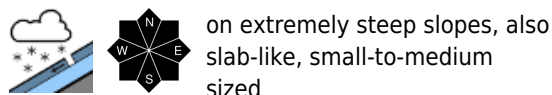
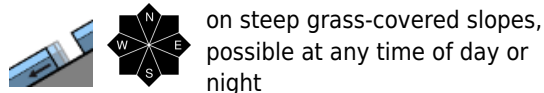
Danger ratings



Expositions



**Chiemgauer Alpen, Heutal, Reiteralpe,
 Untersbergstock, Osterhorngruppe, Gamsfeldgruppe**



Fresh snow atop stable snowpack base

Avalanche danger above the treeline is MODERATE, below that altitude danger is low. The fresh snow can trigger as glide-snow avalanches on steep grass-covered slopes. Above the treeline in extremely steep terrain, small-to-medium loose-snow avalanches or slabs can be triggered (from the fresh snow).

Snowpack structure

Atop a stable, most snowpack or bare ground there was 10-30 cm of powder registered without much wind impact.

Weather

On Saturday the peaks along the Main Alpine Ridge and Nockberge will be in clouds from the south, a bit of snowfall is possible, but little. The southerly winds will be strong (70 km/hr). At 2000 m: -3 degrees.

Outlook

Avalanche danger levels are not expected to change significantly.

Translated by Jeffrey McCabe, www.creativtrans.com

Avalanche problems



Danger ratings



Expositions

