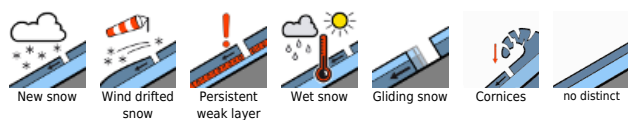


High avalanche danger regionally

	Nockberge, Niedere Tauern Nord, Niedere Tauern Alpenhauptkamm, Niedere Tauern Süd		
	1600 m Loferer und Leoganger Steinberge, Steinernes Meer, Hochkönig, Hagengebirge, Göllstock, Tennengebirge, Gosaukamm, Oberpinzgauer Grasberge, Kitzbüheler Alpen, Glemmtal, Dientner Grasberge, Pongauer Grasberge		
	forestline Großvenedigergruppe Nord, Großvenedigergruppe Alpenhauptkamm, Glocknergruppe Nord, Glocknergruppe Alpenhauptkamm, Goldberggruppe Nord, Goldberggruppe Alpenhauptkamm, Ankogelgruppe, Muhr		
	Osterhorngruppe, Gamsfeldgruppe, Untersbergstock, Chiemgauer Alpen, Heutal, Reiteralpe		

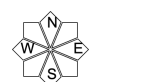
Avalanche problems



Danger ratings



Expositions



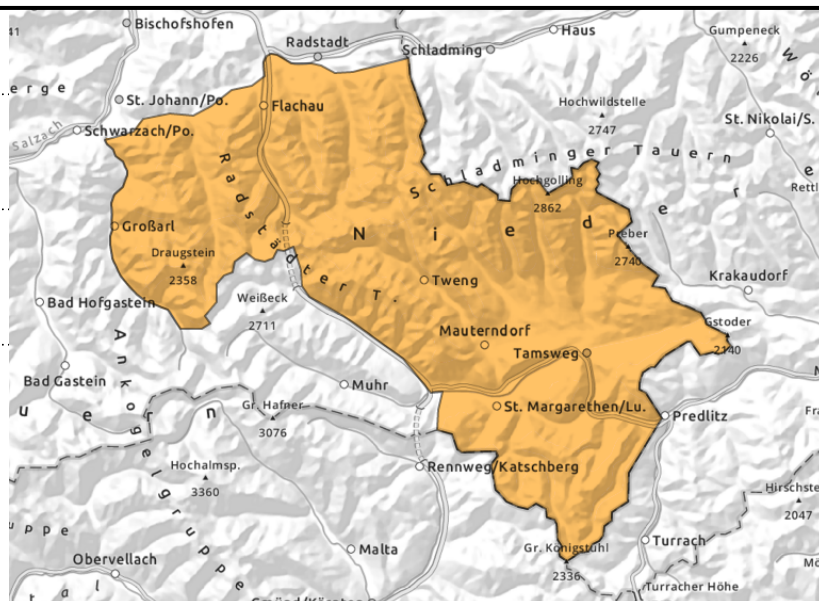
**Nockberge, Niedere Tauern Nord, Niedere Tauern
Alpenhauptkamm, Niedere Tauern Süd**



heavy snowfall, increasing
avalanche magnitude and
danger zones during the day



on steep grass-covered slopes,
possible at any time of day or
night



Considerable avalanche danger due to heavy fresh snow

Avalanche danger is CONSIDERABLE (Danger level 3).

On many steep slopes ($>30^\circ$) avalanches can be triggered by minimum additional loading, grow to medium, even to large size. Danger zones increase with ascending altitude and as the day progresses. Due to the heavy snowfall, also naturally triggered avalanches are possible during the course of the day. Winter sports in outlying terrain require much experience and self-restraint in route selection.

Glide-snow activity will increase below 2400 m, esp. on sunny slopes. Glide-snow avalanches can trigger naturally at any time of day or night in all aspects on steep grass-covered slopes, releases mostly medium-sized, sometimes larger. Avoid zones below glide-cracks.

Snowpack structure

At high altitudes, up to 60 cm of fresh snow is expected, locally more, usually 30-50 cm. Due to the intensity of the snowfall and large amounts, weak layers are generated inside the fresh fallen snow. Due to the swift increase of weight loaded onto the snowpack, even more deeply embedded weak layers can be triggered.

The fresh snow is leading to rising gliding snow activity in all aspects.

Weather

During the night, a cold front will move in from the northwest, bringing intensifying winds and precipitation. By morning the snowfall level will descend to about 1100 m. The amounts of fresh snowfall during the night will still be minor (5-10 cm).

On Friday, heavy clouds will reduce visibility from the start. Widespread snowfall, most along the Tauern and in the Nockberge. At higher valleys, 10-30 cm, in the mountains 60 cm, locally more. Winds at high alpine altitudes of the Main Alpine Ridge will be moderate to brisk from W/SW (gusts at 50 km/hr). At 2000 m: -6 to -3 degrees; at 3000 m: -10 degrees. Precipitation will persist in the early part of the night esp. in the southern regions, in the latter part of the night it will taper off noticeably.

Outlook

Avalanche danger will remain considerable.

Avalanche problems



New snow



Wind drifted snow



Persistent weak layer



Wet snow



Gliding snow



Cornices



no distinct

Danger ratings



1
low



2
moderate



3
considerable



4
high

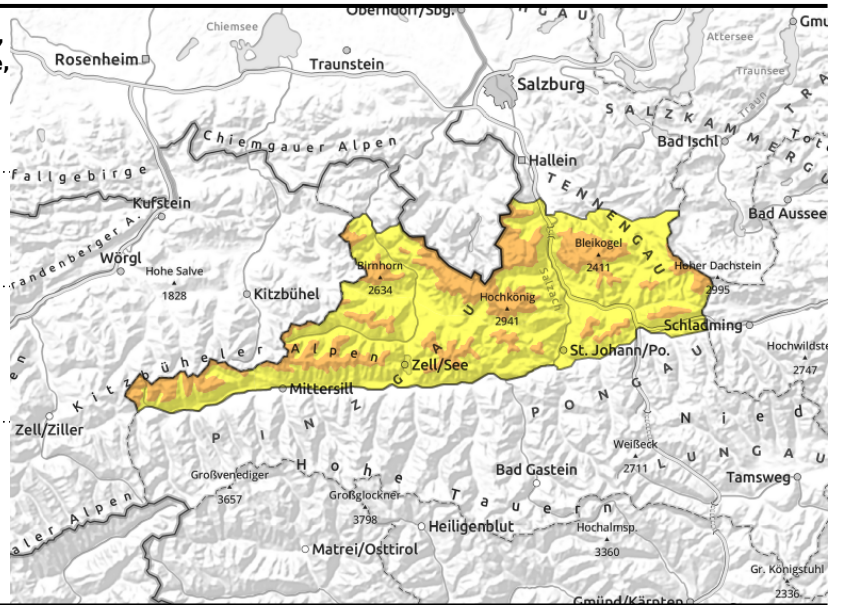



5
very high

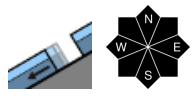
Expositions



Loferer und Leoganger Steinberge, Steinernes Meer, Hochkönig, Hagengebirge, Göllstock, Tennengebirge, Gosaukamm, Oberpinzgauer Grasberge, Kitzbüheler Alpen, Glemmtal, Dientner Grasberge, Pongauer Grasberge



 fresh snow with little wind, heavy snowfall, increasing danger zones during the day

 on steep grass-covered slopes, possible at any time of day or night

Considerable avalanche danger due to heavy fresh snow

Avalanche danger above 1600 m is CONSIDERABLE (Danger level 3).

On many steep slopes (>30°) avalanches can be triggered by minimum additional loading, grow to medium, even to large size. Danger zones increase with ascending altitude and as the day progresses. Due to the heavy snowfall, also naturally triggered avalanches are possible during the course of the day. Winter sports in outlying terrain require much experience and self-restraint in route selection.

Glide-snow activity will increase below 2400 m, esp. on sunny slopes. Glide-snow avalanches can trigger naturally at any time of day or night in all aspects on steep grass-covered slopes, releases mostly medium-sized, sometimes larger. Avoid zones below glide-cracks.

Snowpack structure

At high altitudes, up to 50 cm of fresh snow is expected, locally more, usually 30-40 cm. Due to the intensity of the snowfall and large amounts, weak layers are generated inside the fresh fallen snow. Due to the swift increase of weight loaded onto the snowpack, even more deeply embedded weak layers can be triggered.

The fresh snow is leading to rising gliding snow activity in all aspects.

Weather

During the night, a cold front will move in from the northwest, bringing intensifying winds and precipitation. By morning the snowfall level will descend to about 1100 m. The amounts of fresh snowfall during the night will still be minor (5-10 cm).

On Friday, heavy clouds will reduce visibility from the start. Widespread snowfall, most along the Tauern and in the Nockberge. At higher valleys, 10-30 cm, in the mountains 60 cm, locally more. Winds at high alpine altitudes of the Main Alpine Ridge will be moderate to brisk from W/SW (gusts at 50 km/hr). At 2000 m: -6 to -3 degrees; at 3000 m: -10 degrees. Precipitation will persist in the early part of the night esp. in the southern regions, in the latter part of the night it will taper off noticeably.

Outlook

Avalanche danger will decrease slightly.

Avalanche problems



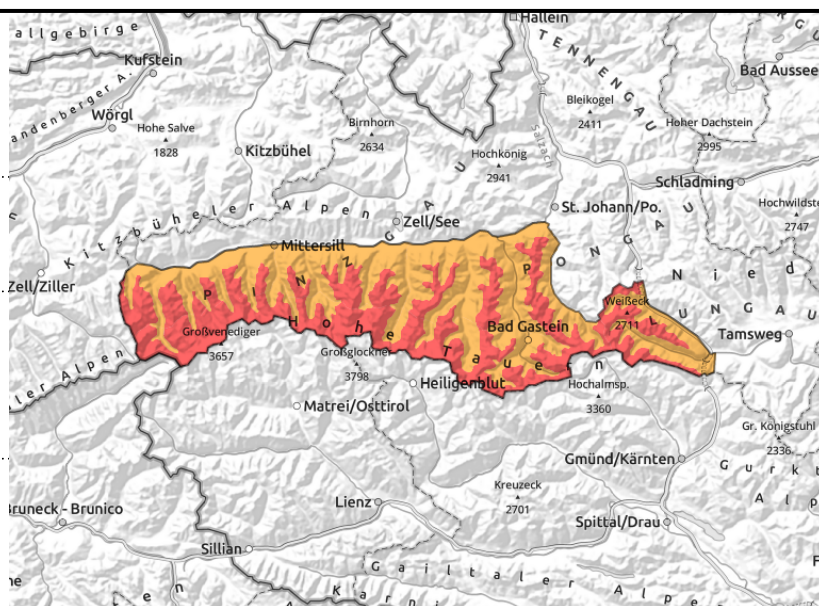
Danger ratings



Expositions



Großvenedigergruppe Nord, Großvenedigergruppe Alpenhauptkamm, Glocknergruppe Nord, Glocknergruppe Alpenhauptkamm, Goldberggruppe Nord, Goldberggruppe Alpenhauptkamm, Ankogelgruppe, Muhr



forestline



increasing naturally triggered avalanches as day progresses, heavy snowfall, many danger zones



on steep grass-covered slopes, possible at any time of day or night

High avalanche danger due to fresh snow and wind

Avalanche danger above the treeline is **HIGH (Danger level 4)**.

On many steep slopes (>30°) avalanches can be triggered by minimum additional loading, grow to large size. Danger zones increase with ascending altitude and as the day progresses. Due to the heavy snowfall, also naturally triggered avalanches are possible during the course of the day. Winter sports in outlying terrain require much experience and self-restraint in route selection.

Glide-snow activity will increase below 2400 m, esp. on sunny slopes. Glide-snow avalanches can trigger naturally at any time of day or night in all aspects on steep grass-covered slopes, releases mostly medium-sized, sometimes larger. Avoid zones below glide-cracks.

Snowpack structure

At high altitudes of the Tauern, 80-100 cm of fresh snow is expected, usually 60 cm. Due to the intensity of the snowfall and large amounts, weak layers are generated inside the fresh fallen snow. Due to the swift increase of weight loaded onto the snowpack, even more deeply embedded weak layers can be triggered.

The fresh snow is leading to rising gliding snow activity in all aspects.

Weather

During the night, a cold front will move in from the northwest, bringing intensifying winds and precipitation. By morning the snowfall level will descend to about 1100 m. The amounts of fresh snowfall during the night will still be minor (5-10 cm).

On Friday, heavy clouds will reduce visibility from the start. Widespread snowfall, most along the Tauern and in the Nockberge. At higher valleys, 10-30 cm, in the mountains 60 cm, locally more. Winds at high alpine altitudes of the Main Alpine Ridge will be moderate to brisk from W/SW (gusts at 50 km/hr). At 2000 m: -6 to -3 degrees; at 3000 m: -10 degrees. Precipitation will persist in the early part of the night esp. in the southern regions, in the latter part of the night it will taper off noticeably.

Outlook

Avalanche danger will remain considerable.

Avalanche problems



Danger ratings



Expositions



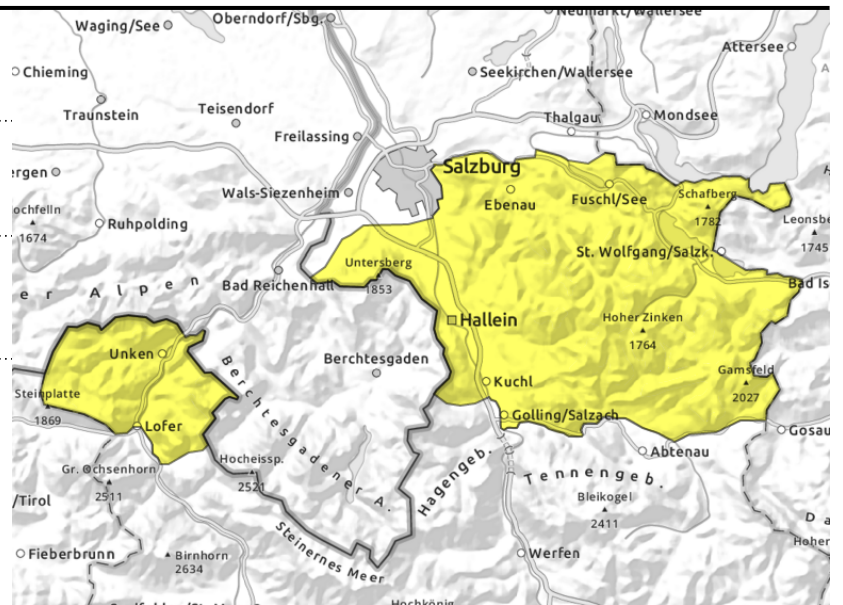
**Osterhorngruppe, Gamsfeldgruppe,
 Untersbergstock, Chiemgauer Alpen, Heutal,
 Reiteralpe**



fresh snow, little wind



on steep grass-covered slopes,
 possible at any time of day or night



Fresh snow with little wind

Avalanche danger is moderate (Danger Level 2).

Avalanches can be triggered even by 1 person in some danger zones above the treeline. Danger zones occur in all aspects and will increase as the day progresses, releases medium size.

Due to the heavy snowfall, glide-snow activity will increase, esp. on sunny slopes. Glide-snow avalanches can trigger naturally at any time of day or night in all aspects on steep grass-covered slopes, releases mostly medium-sized, sometimes larger. Avoid zones below glide-cracks.

Snowpack structure

Widespread 20-30 cm of fresh snow is anticipated. Due to the intensity of the snowfall and large amounts, weak layers are generated inside the fresh fallen snow.

The fresh snow is leading to rising gliding snow activity in all aspects.

Weather

During the night, a cold front will move in from the northwest, bringing intensifying winds and precipitation. By morning the snowfall level will descend to about 1100 m. The amounts of fresh snowfall during the night will still be minor (5-10 cm).

On Friday, heavy clouds will reduce visibility from the start. Widespread snowfall, 20-30 cm in the early part of the night. Light winds. At 2000 m: -6 to -3 degrees.

Outlook

Avalanche danger will decrease slightly.

Translated by Jeffrey McCabe, www.creativtrans.com

Avalanche problems



Danger ratings



Expositions

