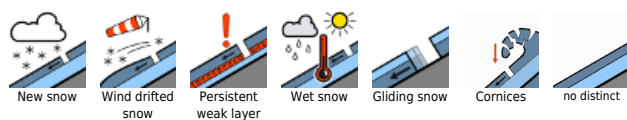


Fresh snowdrift accumulations from southerly foehn winds

	Nockberge		
	2200 m Loferer und Leoganger Steinberge, Steinernes Meer, Hochkönig, Hagengebirge, Göllstock, Tennengebirge, Gosaukamm		
	Chiemgauer Alpen, Heutal, Reiteralpe, Osterhorngruppe, Gamsfeldgruppe, Untersbergstock, Kitzbüheler Alpen, Glemmtal, Dientner Grasberge, Pongauer Grasberge		
	2200 m Großvenedigergruppe Nord, Großvenedigergruppe Alpenhauptkamm, Glocknergruppe Nord, Glocknergruppe Alpenhauptkamm, Goldberggruppe Nord, Goldberggruppe Alpenhauptkamm, Ankogelgruppe, Muhr, Niedere Tauern Süd, Niedere Tauern Alpenhauptkamm, Oberpinzgauer Grasberge, Niedere Tauern Nord		

Avalanche problems



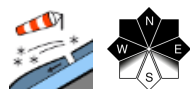
Danger ratings



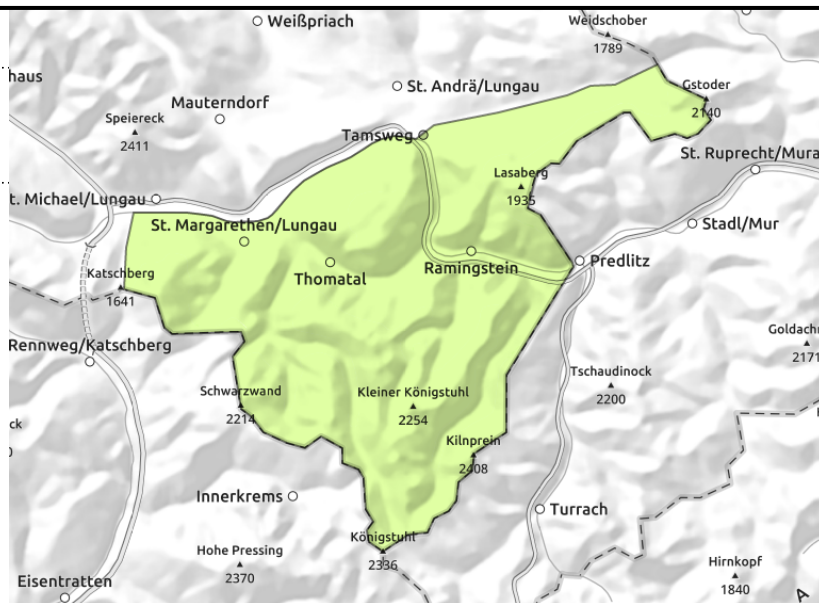
Expositions



Nockberge



in gullies and steep bowls



Favorable situation

Avalanche danger is low. Above 2000 m small/thin snowdrift accumulations. Danger of falling outweighs that of being buried in snow masses.

Snowpack structure

The snowpack has settled, is generally stable.

Weather

On Thursday it will remain dry, with diffuse light conditions, strong-to-stormy S/SW winds, mild. At 2000 m: temperatures rising from -3 to 1 degree.

Friday: often intensive snowfall, poor visibility all day long, esp. in the Tauern and later in the Nockberge. Fresh snow in Nockberge: 40-60 cm total by Saturday morning. Winds light to moderate from W/NW, lighter at lower altitudes.

Outlook

Avalanche danger will increase due to fresh snowfall.

Avalanche problems



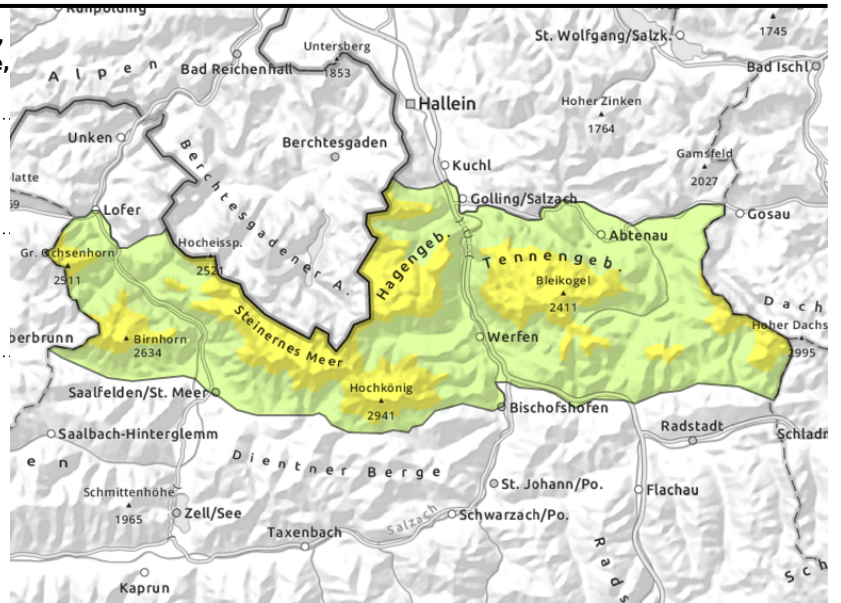
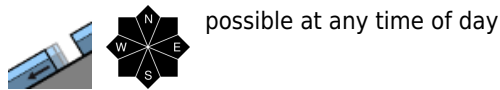
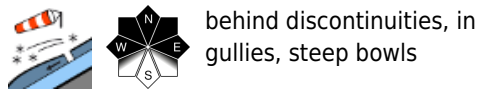
Danger ratings



Expositions



Loferer und Leoganger Steinberge, Steinernes Meer, Hochkönig, Hagengebirge, Göllstock, Tennengebirge, Gosaukamm



Evaluate high-altitude snowdrifts with caution

Above 2200 m, moderate avalanche danger, Danger Level 2.

Fresh snowdrift accumulations above 2200 m are trigger-prone in places, danger zones occur on W/N/E facing slopes, increase with ascending altitude, 1 person can trigger avalanches in some places.

Latent danger of glide-snow avalanches persists. Glide-snow avalanches can release at any time of day or night naturally, releases mostly medium, sometimes large. Avoid zones below glide cracks. Due to higher temperatures and diffuse light, naturally triggered loose-snow avalanches can be expected during the course of the day on extremely steep slopes, releases mostly small.

Snowpack structure

Above 2200 m, fresh and older snowdrift accumulations lie deposited atop still loose old snowpack layers, can be trigger-prone.

Below this, the layering is often favorable, on sunny slopes the fresh snow is already moist. On shady slopes at higher altitudes, 10-20 cm of loose snow lies atop a melt-freeze crust. Below 1500 m there is hardly any snow on the ground.

Weather

On Thursday it will remain dry, with diffuse light conditions, strong-to-stormy S/SW winds, mild. At 2000 m: temperatures rising from -3 to 1 degree.

Friday: often intensive snowfall, poor visibility all day long. Fresh snow in Northern Alps: 20-40 cm total by Saturday morning. Winds light to moderate from W/NW, lighter at lower altitudes.

Outlook

Avalanche danger will increase due to fresh snowfall.

Avalanche problems



Danger ratings



Expositions



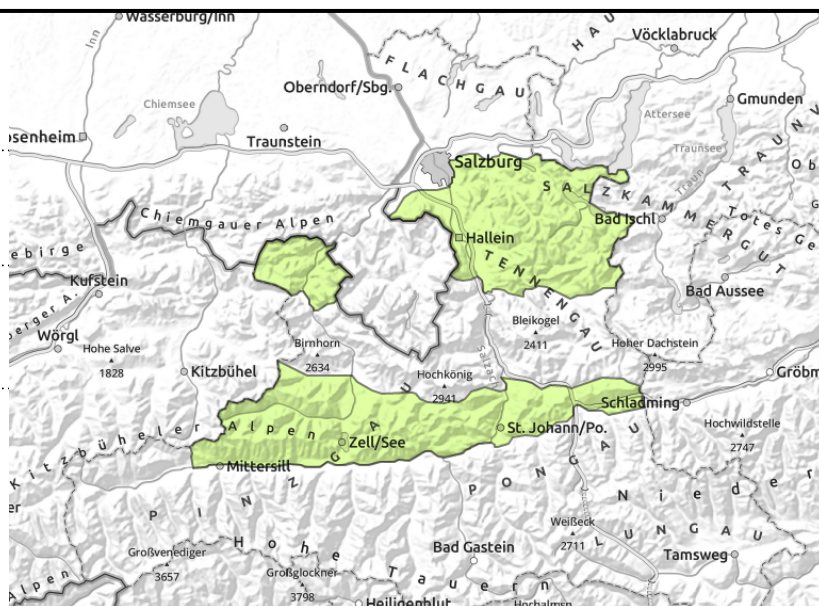
Chiemgauer Alpen, Heutal, Reiteralpe, Osterhorngruppe, Gamsfeldgruppe, Untersbergstock, Kitzbüheler Alpen, Glemmtal, Dientner Grasberge, Pongauer Grasberge



on steep grass-covered slopes, possible at any time of day



daytime cycle of naturally triggered avalanche activity



Favorable avalanche situation by and large

Avalanche danger is low (1).

Still latent danger of glide-snow avalanches which can trigger naturally on steep grass-covered slopes, mostly medium-sized, sometimes large-sized. Avoid zones below glide cracks.

Naturally triggered loose-snow avalanches can be expected during the course of the day on extremely steep slopes, releases mostly small.

Fresh snowdrift accumulations at summit level and in ridgeline terrain above 2000 m are still trigger-prone in some places.

Snowpack structure

Snowpack layering is favorable by and large, on sunny slopes the fresh snow is already moist, there is a melt-freeze crust capable of bearing loads. On shady slopes at higher altitudes, 10-20 cm of loose snow lies atop a melt-freeze crust. Below 1500 m there is hardly any snow on the ground.

Weather

On Thursday it will remain dry, with diffuse light conditions, mild, compact cloudbanks. The foehn will bring bright intervals, esp. in Pinzgau and Pongau. Winds moderate to brisk. At 2000 m: temperatures rising from -3 to 1 degree.

Friday: often intensive snowfall, poor visibility all day long. Fresh snow in Northern Alps: 20-40 cm total by Saturday morning, in southern zones up to 50 cm. Winds light to moderate from W/NW, lighter at lower altitudes.

Outlook

Avalanche danger will increase due to fresh snowfall.

Avalanche problems



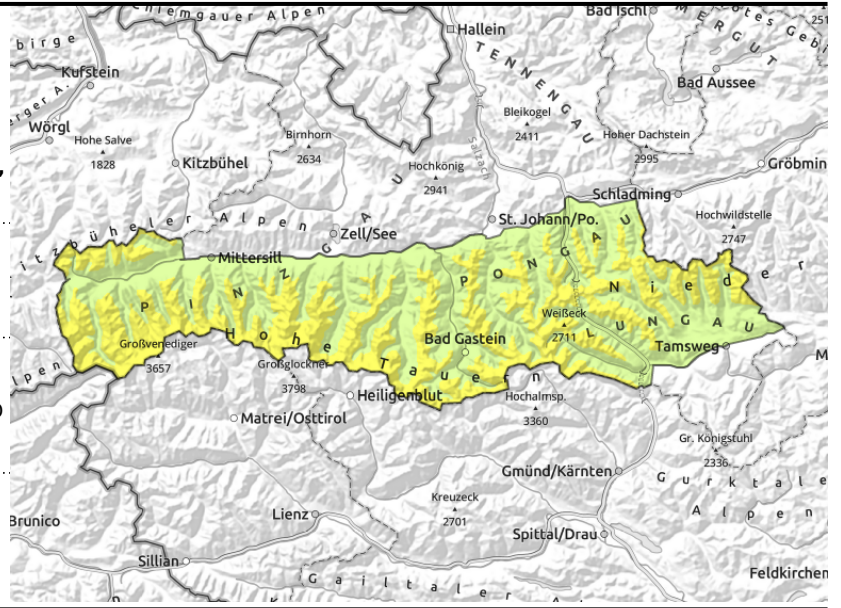
Danger ratings







Expositions



Großvenedigergruppe Nord, Großvenedigergruppe Alpenhauptkamm, Glocknergruppe Nord, Glocknergruppe Alpenhauptkamm, Goldberggruppe Nord, Goldberggruppe Alpenhauptkamm, Ankogelgruppe, Muhr, Niedere Tauern Süd, Niedere Tauern Alpenhauptkamm, Oberpinzgauer Grasberge, Niedere Tauern Nord



  distant from ridges, behind discontinuities, in gullies, steep bowls (gullies in all aspects)

  on steep grass-covered slopes, possible at any time of day or night

Fresh snowdrifts from southerly foehn winds

Avalanche danger above 2200 m is moderate (Danger Level 2).

Fresh snowdrift accumulations above 2200 m are trigger-prone in places, danger zones occur on W/N/E facing slopes, increase with ascending altitude, 1 person can trigger avalanches in some places.

Latent danger of glide-snow avalanches persists. Glide-snow avalanches can release at any time of day or night naturally, releases mostly medium, sometimes large. Avoid zones below glide cracks. Due to higher temperatures and diffuse light, naturally triggered loose-snow avalanches can be expected during the course of the day on extremely steep slopes, releases mostly small.

Snowpack structure

Above 2200 m, fresh and older snowdrift accumulations lie deposited atop still loose old snowpack layers, can be trigger-prone.

Below this, the layering is often favorable, on sunny slopes the fresh snow is already moist. On shady slopes at higher altitudes, 10-20 cm of loose snow lies atop a melt-freeze crust. Below 1500 m there is hardly any snow on the ground.

Weather

On Thursday it will remain dry, with diffuse light conditions, mild, compact cloudbanks. The foehn will bring bright intervals, esp. in Pinzgau and Pongau. Peaks on Main Alpine Rige often veiled in fog. Winds strong to stormy in the Tauern from S/SW (80-110 km/hr). At 2000 m: temperatures rising from 0 to 4 degrees; at 3000 m from -6 to -3 degrees.

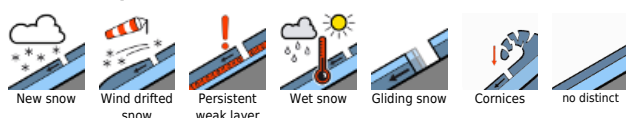
Friday: often intensive snowfall, poor visibility all day long, esp. in the Tauern. Fresh snow in the Tauern: 40-60 cm total by Saturday morning, in southern zones up to 50 cm. Winds light to moderate from W/NW, lighter at lower altitudes.

Outlook

Avalanche danger will increase significantly due to fresh snowfall.

Translated by Jeffrey McCabe, www.creativtrans.com

Avalanche problems



Danger ratings



Expositions

