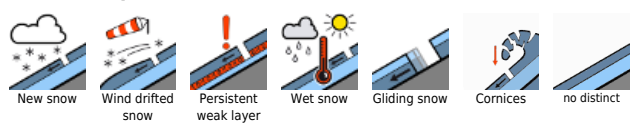


Fresh snowdrift accumulations at high altitudes

	<p>Nockberge</p>		
	<p>1800 m</p>	<p>Chiemgauer Alpen, Heutal, Reiteralpe, Osterhorngruppe, Gamsfeldgruppe, Untersbergstock, Loferer und Leoganger Steinberge, Steinernes Meer, Hochkönig, Hagengebirge, Göllstock, Kitzbüheler Alpen, Glemmtal, Oberpinzgauer Grasberge, Dientner Grasberge, Tennengebirge, Gosaukamm, Pongauer Grasberge, Niedere Tauern Nord, Goldberggruppe Nord, Glocknergruppe Nord, Großvenedigergruppe Nord, Großvenedigergruppe Alpenhauptkamm, Glocknergruppe Alpenhauptkamm, Goldberggruppe Alpenhauptkamm, Niedere Tauern Alpenhauptkamm, Ankogelgruppe, Muhr, Niedere Tauern Süd</p>	

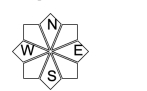
Avalanche problems



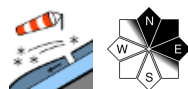
Danger ratings



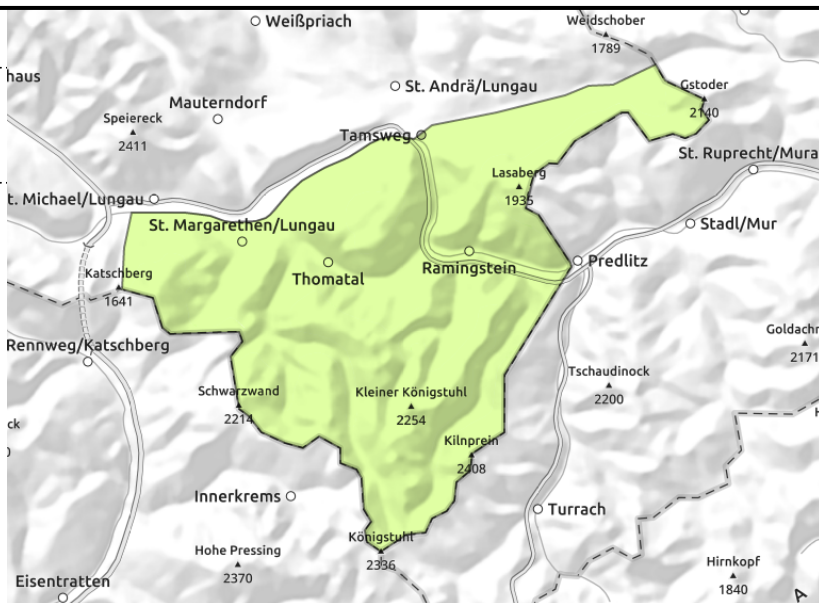
Expositions



Nockberge



small/thin drifted masses



Favorable situation

Avalanche danger is low. Above 2000 m small/thin snowdrift accumulations. Danger of falling outweighs that of being buried in snow masses.

Snowpack structure

The snowpack has settled, is generally stable. The old snowpack is thoroughly wet except on shady slopes above 2000 m (still reserves of cold).

Weather

During the night heavy cloud cover will move in bringing minor snowfall
 On Tuesday, heavy clouds and windy weather, possible light snowfall, the zero-degree level dropping to 1500 m. At 2000 m: -5 degrees, at 3000 m: -11 degrees.

Outlook

Avalanche danger levels are not expected to change significantly.

Avalanche problems



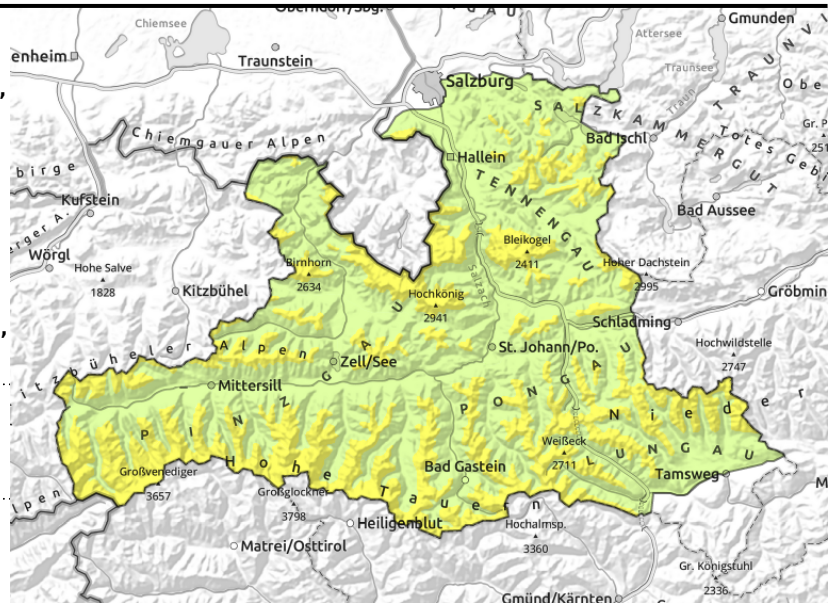
Danger ratings



Expositions



Chiemgauer Alpen, Heutal, Reiteralpe, Osterhorngruppe, Gamsfeldgruppe, Untersbergstock, Loferer und Leoganger Steinberge, Steinernes Meer, Hochkönig, Hagengebirge, Gölstock, Kitzbüheler Alpen, Glemmtal, Oberpinzgauer Grasberge, Dientner Grasberge, Tennengebirge, Gosaukamm, Pongauer Grasberge, Niedere Tauern Nord, Goldberggruppe Nord, Glocknergruppe Nord, Großvenedigergruppe Nord, Großvenedigergruppe Alpenhauptkamm, Glocknergruppe Alpenhauptkamm, Goldberggruppe Alpenhauptkamm, Niedere Tauern Alpenhauptkamm, Ankogelgruppe, Muhr, Niedere Tauern Süd



1800 m



behind discontinuities, in gullies, steep bowls



possible at any time of day

Fresh snowfall plus wind

Above 1800 m, moderate avalanche danger, Danger Level 2.

Fresh snowdrift accumulations above 1800 m are trigger-prone in places, danger zones occur on N/E/SE facing slopes, increase with ascending altitude, 1 person can trigger avalanches in some places. Below 2200 m the releases are mostly small, at high altitudes they can be larger. Latent danger of glide-snow avalanches persists. Glide-snow avalanches can release at any time of day or night naturally, releases mostly medium, sometimes large. Avoid zones below glide cracks. Below 1800 m, naturally triggered loose-snow avalanches are possible in extremely steep terrain, releases mostly small.

Snowpack structure

By Tuesday evening, a further 10-20 cm of fresh snowfall is expected, accompanied by wind. Up to 2200 m the fresh snow and drifts will be deposited atop a melt-freeze crust, bonding is generally good. At high altitudes there are still soft layers inside the snowpack which are weak layers. New weak layers in the fresh snow and drifts are possible. Above 2500 m avalanches can fracture down to more deeply embedded layers in the snowpack.

Weather

During the night heavy cloud cover will move in bringing minor snowfall, snowfall level dropping to 1200 m. By morning in Tauern and Northern Alps: 5-15 cm of fresh snow.

On Tuesday, heavy clouds and windy weather, possible light snowfall, the zero-degree level dropping to 1100 m. By evening 2-10 cm of fresh snow, transported by winds at high altitudes. At 2000 m: -5 degrees, at 3000 m: -11 degrees. At high altitudes in the Tauern, NW winds can reach windspeeds of 60 km/hr, in the Northern Alps 40 km/hr. Snowfall will taper off during the night.

Outlook

Avalanche danger levels will decrease.

Translated by Jeffrey McCabe, www.creativtrans.com

Avalanche problems



Danger ratings



Expositions

