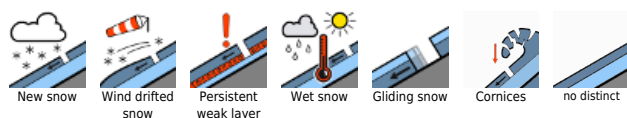


Main problems: gliding snow, wet snow

	Nockberge	
	1800 m Chiemgauer Alpen, Heutal, Reiteralpe, Osterhorngruppe, Gamsfeldgruppe, Untersbergstock	
	2700 m Großvenedigergruppe Nord, Großvenedigergruppe Alpenhauptkamm, Glocknergruppe Nord, Glocknergruppe Alpenhauptkamm, Goldberggruppe Nord, Goldberggruppe Alpenhauptkamm, Ankogelgruppe, Muhr, Niedere Tauern Alpenhauptkamm, Niedere Tauern Süd, Loferer und Leoganger Steinberge, Oberpinzgauer Grasberge, Niedere Tauern Nord, Kitzbüheler Alpen, Glemmtal, Dientner Grasberge, Pongauer Grasberge	
	Tennengebirge, Gosaukamm, Steinernes Meer, Hochkönig, Hagengebirge, Göllstock	

Avalanche problems



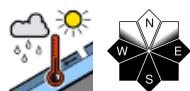
Danger ratings



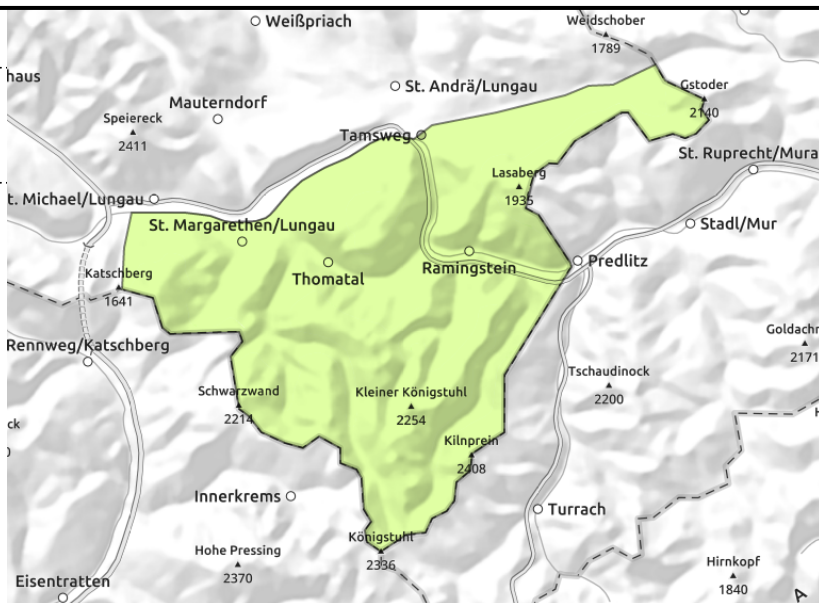
Expositions



Nockberge



in very isolated cases



Favorable situation

Avalanche danger is low. Due to solar radiation, naturally triggered loose-snow avalanches can be expected in extremely steep terrain during the day.

Snowpack structure

The snowpack has settled, is generally stable. The old snowpack is thoroughly wet except on shady slopes above 2000 m (still reserves of cold).

Weather

On Sunday, residual clouds will disperse, sunshine and good visibility will follow. At 2000 m: -1 to +3 degrees; at 3000 m: -6 to -3 degrees. Light winds. Heavy clouds will move in during the evening. In the latter part of Sunday night, precipitation will set in, snowfall level at 1600 m.

Outlook

Avalanche danger levels are not expected to change significantly.

Avalanche problems



Danger ratings







Expositions

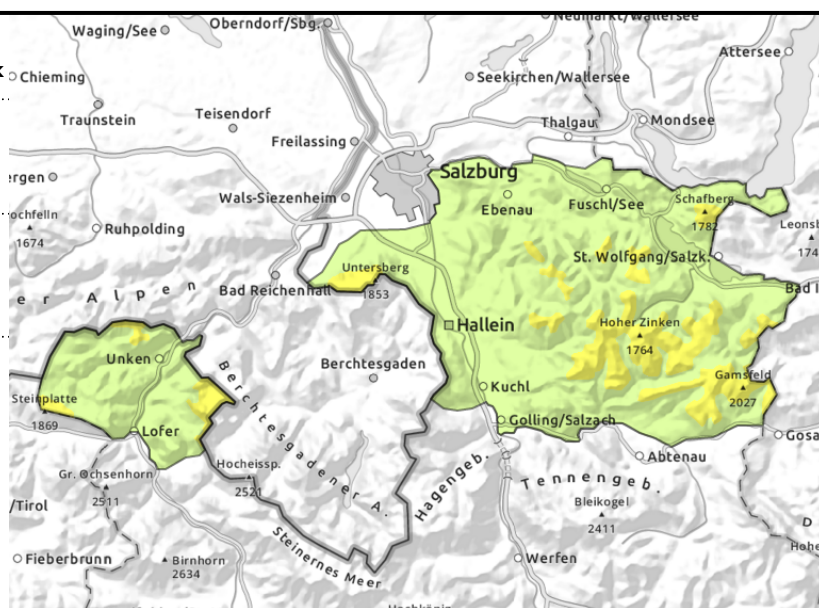


Chiemgauer Alpen, Heutal, Reiteralpe, Osterhorngruppe, Gamsfeldgruppe, Untersbergstock



  daytime cycle of naturally triggered avalanche activity

  possible at any time of day



Main problems: gliding snow, wet snow

Avalanche danger above 1800 m is moderate. Due to a thoroughly wet snowpack, naturally triggered loose-snow avalanches can be expected in extremely steep terrain. Naturally triggered activity will increase during the course of the day due to solar radiation, releases mostly small, medium-size in starting zones above 1800 m.

On steep grass-covered slopes in all aspects which have not yet discharged, glide-snow avalanches reaching medium size are possible at any time of day or night. Avoid zones below glide cracks.

Snowpack structure

The snowpack is moistened up to summit level and will forfeit more firmness due to solar radiation on Sunday.

Weather

During the nocturnal hours, minor rainfall and snowfall with variable clouds, snowfall level at 1800 m. The NW winds will slacken off during the night. On Sunday, residual clouds will disperse, sunshine and good visibility will follow. At 2000 m: -1 to +3 degrees; at 3000 m: -6 to -3 degrees. Light winds. Heavy clouds will move in during the evening. In the latter part of Sunday night, precipitation will set in, snowfall level at 1600 m.

Outlook

Avalanche danger will rise slightly.

Avalanche problems



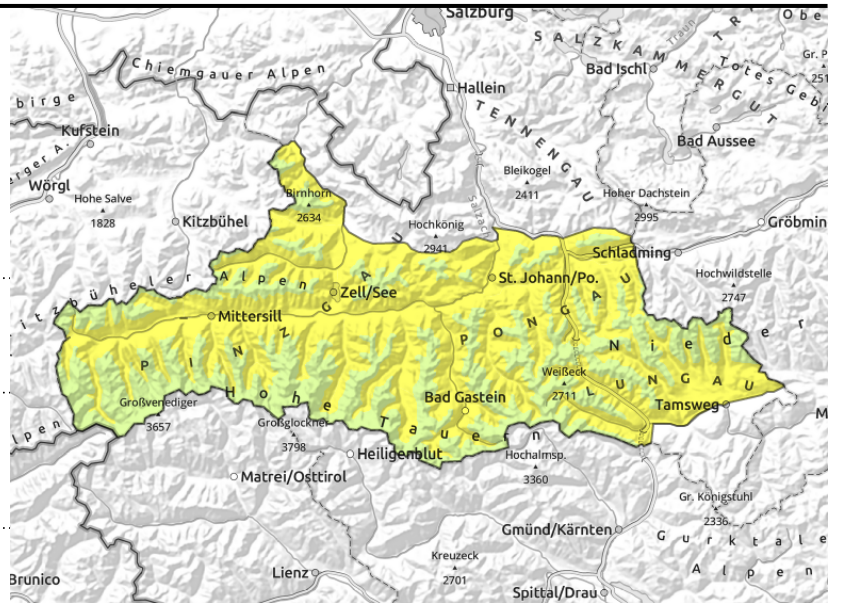
Danger ratings



Expositions



Großvenedigergruppe Nord, Großvenedigergruppe Alpenhauptkamm, Glocknergruppe Nord, Glocknergruppe Alpenhauptkamm, Goldberggruppe Nord, Goldberggruppe Alpenhauptkamm, Ankogelgruppe, Muhr, Niedere Tauern Alpenhauptkamm, Niedere Tauern Süd, Loferer und Leoganger Steinberge, Oberpinzgauer Grasberge, Niedere Tauern Nord, Kitzbüheler Alpen, Glemmtal, Dientner Grasberge, Pongauer Grasberge



2700 m



on steep grass-covered slopes, possible at any time of day, deep fractures



daytime cycle of naturally triggered avalanche activity

Main problems: gliding snow, wet snow

Avalanche danger below 2700 m is moderate (Danger Level 2). Main danger: glide-snow avalanches, naturally triggerable on steep grass-covered slopes, mostly medium-sized, sometimes larger. Avoid zones below glide cracks.

Due to a thoroughly wet snowpack, naturally triggered loose-snow avalanches can be expected in extremely steep terrain. Naturally triggered activity will increase during the course of the day due to solar radiation, releases mostly small, medium-size in starting zones above 2000 m.

At high altitudes, esp. on N/NE/E facing slopes, isoalted trigger-prone snowdrift accumulations threaten, mostly small, danger zones occur esp. on very steep ridgeline slopes above 2500 m.

Snowpack structure

On Saturday there was 10 cm of fresh snow registered at high altitudes, rainfall lower down. The snowpack is moistened to over 2400 m and will forfeit more firmness due to solar radiation on Sunday.

Small snowdrift masses occur in wind-protected ridgeline terrain, most are easy to recognize. Above 2500 m, avalanches can fracture down to more deeply embedded layers inside the snowpack and grow to larger size on very steep shady slopes.

Weather

During the nocturnal hours, minor rainfall and snowfall with variable clouds, snowfall level at 1800 m. The NW winds will slacken off during the night. On Sunday, residual clouds will disperse, sunshine and good visibility will follow. At 2000 m: -1 to +3 degrees; at 3000 m: -6 to -3 degrees. Light winds. Heavy clouds will move in during the evening. In the latter part of Sunday night, precipitation will set in, snowfall level at 1600 m.

Outlook

Snowdrift problem will intensify slightly.

Avalanche problems



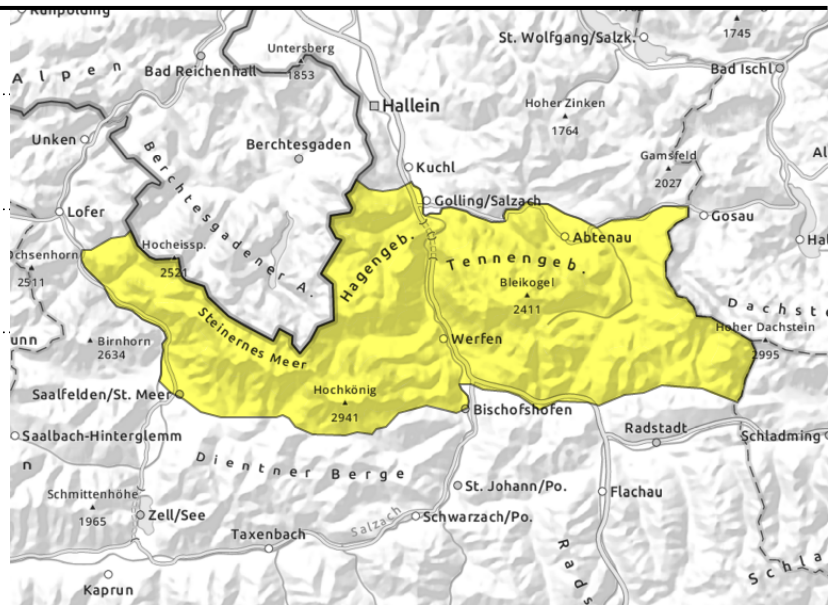
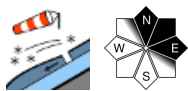
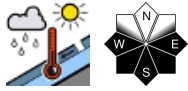
Danger ratings



Expositions



Tennengebirge, Gosaukamm, Steinernes Meer, Hochkönig, Hagengebirge, Göllstock



Main problems: gliding snow, wet snow at high altitudes

Avalanche danger is moderate (Danger Level 2). Due to a thoroughly wet snowpack, naturally triggered loose-snow avalanches can be expected in extremely steep terrain. Naturally triggered activity will increase during the course of the day due to solar radiation, releases mostly small, medium-size in starting zones above 2000 m.

Latent danger of glide-snow avalanches persist, naturally triggerable on steep grass-covered slopes in all aspects, can reach medium size. Avoid zones below glide cracks.

At high altitudes, esp. on N/NE/E facing slopes, isoalted trigger-prone snowdrift accumulations threaten, mostly small, danger zones occur esp. on very steep ridgline slopes above 2300 m.

Snowpack structure

On Saturday there was 10 cm of fresh snow registered at high altitudes, rainfall lower down. The snowpack is moistened to over 2400 m and will forfeit more firmness due to solar radiation on Sunday.

Small snowdrift masses occur in wind-protected ridgeline terrain, most are easy to recognize. Above 2500 m, avalanches can fracture down to more deeply embedded layers inside the snowpack and grow to larger size on very steep shady slopes.

Weather

During the nocturnal hours, minor rainfall and snowfall with variable clouds, snowfall level at 1800 m. The NW winds will slacken off during the night. On Sunday, residual clouds will disperse, sunshine and good visibility will follow. At 2000 m: -1 to +3 degrees; at 3000 m: -6 to -3 degrees. Light winds. Heavy clouds will move in during the evening. In the latter part of Sunday night, precipitation will set in, snowfall level at 1600 m.

Outlook

Snowdrift problem will intensify slightly.

Translated by Jeffrey McCabe, www.creativtrans.com

Avalanche problems



Danger ratings



Expositions

