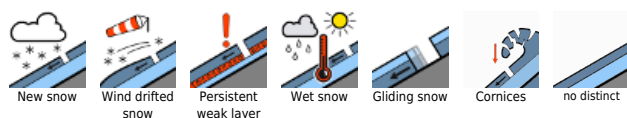


Main problem: gliding snow. Beware high-alpine snowdrift accumulations.

	Nockberge		
	Chiemgauer Alpen, Heutal, Reiteralpe, Osterhorngruppe, Gamsfeldgruppe, Untersbergstock, Pongauer Grasberge		
	2700 m Großvenedigergruppe Nord, Großvenedigergruppe Alpenhauptkamm, Glocknergruppe Nord, Glocknergruppe Alpenhauptkamm, Goldberggruppe Nord, Goldberggruppe Alpenhauptkamm, Ankogelgruppe, Muhr, Niedere Tauern Alpenhauptkamm, Niedere Tauern Süd, Tennengebirge, Gosaukamm, Steinernes Meer, Hochkönig, Hagengebirge, Göllstock, Loferer und Leoganger Steinberge, Oberpinzgauer Grasberge, Niedere Tauern Nord, Kitzbüheler Alpen, Glemmtal, Dientner Grasberge		

Avalanche problems



Danger ratings



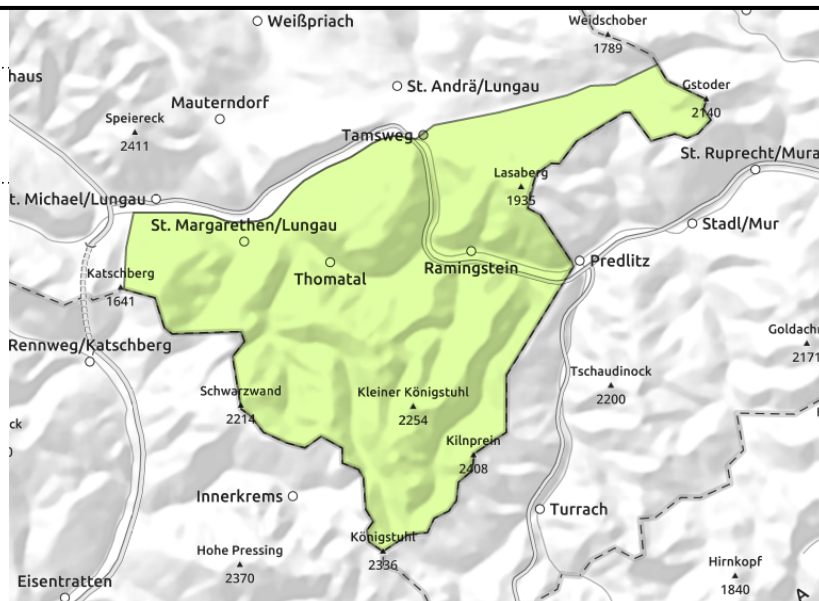
Expositions



Nockberge



sehr vereinzelt



Favorable situation

Avalanche danger is low. Small slab avalanches can trigger near ridgelines on N/E facing slopes in steep terrain only in few spots. Danger zones occur esp. behind discontinuities and in very steep gullies.

Snowpack structure

The fresh snow from the beginning of the week has settled, generally well bonded with the old snowpack surface. The old snowpack is compact, thoroughly wet except on shady slopes above 2000 m (still reserves of cold).

Weather

In the Lungau Nockberge hardly any snowfall. Moderate W/NW winds. At 2000 m: +1 degree. On Saturday night the precipitation will taper off and come to an end.

Outlook

Avalanche danger levels are not expected to change significantly.

Avalanche problems



Danger ratings



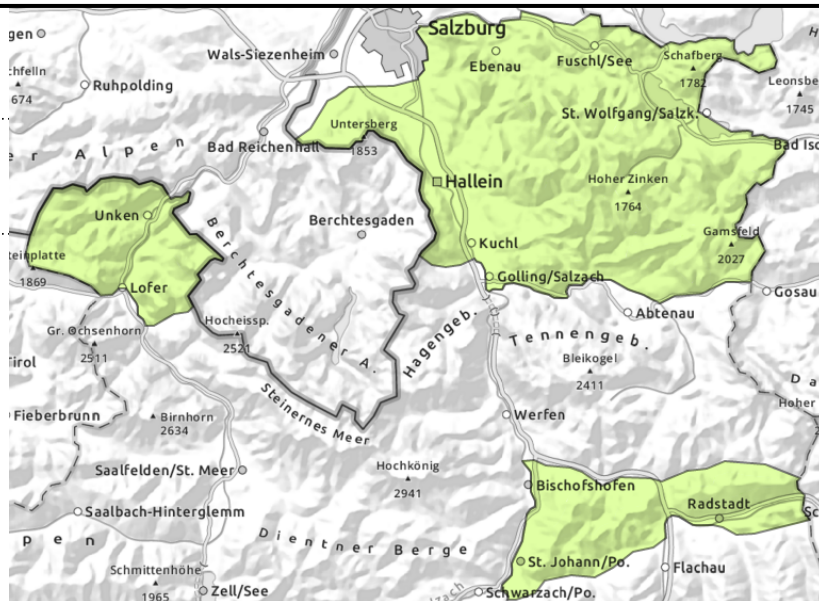
Expositions



Chiemgauer Alpen, Heutal, Reiteralpe, Osterhorngruppe, Gamsfeldgruppe, Untersbergstock, Pongauer Grasberge



possible at any time of day, on extremely steep grass-covered slopes



Avoid zones below glide cracks

Avalanche danger is LOW. On steep grass-covered slopes in all aspects which have not yet discharged, glide-snow avalanches reaching medium size are possible at any time of day or night. Avoid zones below glide cracks. Isolated wet loose-snow avalanches are possible in extremely steep terrain.

Snowpack structure

Above 2000 m 5-10 cm of fresh snow is anticipated, moderate NW winds will generate small snowdrift accumulations at summit level, bonding well with the old snowpack surface.

The old snowpack base is stable by and large.

On shady slopes up to 2000 m the snowpack surface is moistened. On south-facing slopes it is isotherm up to summit level.

Weather

On Saturday most peaks will be veiled in fog and clouds, visibility much reduced due to rainfall and snowfall, most in the Northern Alps, snowfall level dropping from 2000 down to 1700 m. At high altitudes in the Northern Alps, 5-10 cm fresh snow, moderate W/NW winds. At 2000 m: +1 degree. On Saturday night the precipitation will come to an end.

Outlook

Avalanche danger levels are not expected to change significantly.

Avalanche problems



New snow



Wind drifted snow



Persistent weak layer



Wet snow



Gliding snow



Cornices



no distinct

Danger ratings



1

low



2

moderate



3

considerable



4

high



5

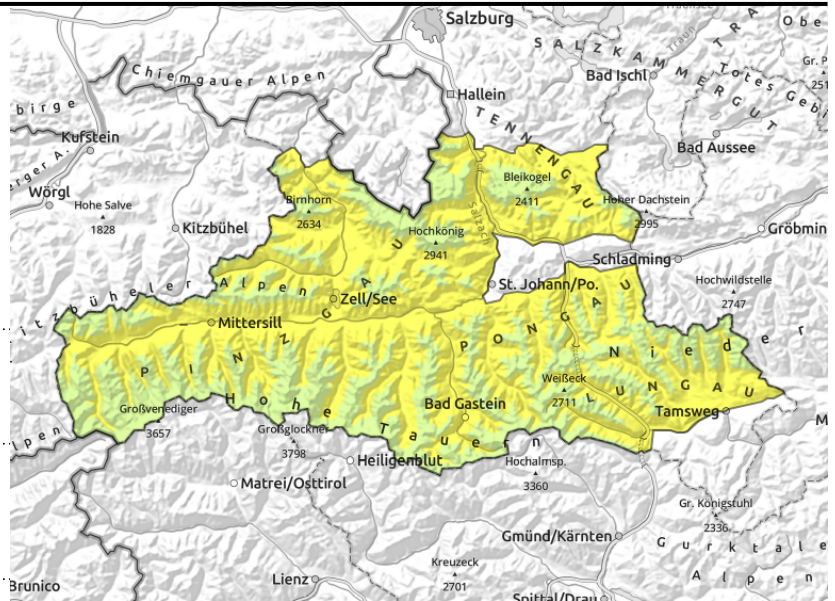
very high

Expositions



Compass rose showing cardinal directions (N, S, E, W).

Großvenedigergruppe Nord, Großvenedigergruppe Alpenhauptkamm, Glocknergruppe Nord, Glocknergruppe Alpenhauptkamm, Goldberggruppe Nord, Goldberggruppe Alpenhauptkamm, Ankogelgruppe, Muhr, Niedere Tauern Alpenhauptkamm, Niedere Tauern Süd, Tennengebirge, Gosaukamm, Steinernes Meer, Hochkönig, Hagengebirge, Göllstock, Loferer und Leoganger Steinberge, Oberpinzgauer Grasberge, Niedere Tauern Nord, Kitzbüheler Alpen, Glemmtal, Dientner Grasberge



2700 m



on steep grass-covered slopes, possible at any time of day, deep fractures



near ridgelines, in isolated cases

Beware gliding snow, snowdrift accumulations at high altitudes

Below 2700 m danger is moderate. Main danger: glide-snow avalanches, naturally triggerable in all aspects on steep grass-covered slopes, usually medium-sized. Avoid slopes with glide cracks. At high altitudes, esp. on N/NE/E facing slopes, isolated trigger-prone snowdrift accumulations, usually small sized. Danger zones occur esp. on very steep ridgeline slopes above 2600 m. Beware terrain where you can take a fall and discontinuities in the terrain.

Snowpack structure

Above 2000 m 5-10 cm of fresh snow is anticipated, moderate NW winds will generate small snowdrift accumulations at summit level, bonding well with the old snowpack surface, deposited near ridges in wind-quiet spaces, often difficult to recognize due to poor visibility. On shady slopes above 2000 m the snowpack surface still has large reserves of cold. On south-facing slopes it is isotherm up to summit level.

Weather

On Saturday most peaks will be veiled in fog and clouds, visibility much reduced due to rainfall and snowfall, most in the Northern Alps, snowfall level dropping from 2000 down to 1700 m. At high altitudes in the Northern Alps, 5-10 cm fresh snow, moderate W/NW winds. At 2000 m: +1 degree. On Saturday night the precipitation will come to an end.

Outlook

Avalanche danger levels are not expected to change significantly. Gliding snow activity will recede somewhat.

Translated by Jeffrey McCabe, www.creativtrans.com

Avalanche problems



Danger ratings



Expositions

