

Gliding snow/loose-snow activity due to warmth and solar radiation

	Nockberge	
	Chiemgauer Alpen, Heutal, Reiteralpe, Osterhorngruppe, Gamsfeldgruppe, Untersbergstock, Pongauer Grasberge	
	Großvenedigergruppe Nord, Großvenedigergruppe Alpenhauptkamm, Glocknergruppe Nord, Glocknergruppe Alpenhauptkamm, Goldberggruppe Nord, Goldberggruppe Alpenhauptkamm, Ankogelgruppe, Muhr, Oberpinzgauer Grasberge, Kitzbüheler Alpen, Glemmtal, Loferer und Leoganger Steinberge, Steinernes Meer, Hochkönig, Hagengebirge, Göllstock, Dientner Grasberge, Niedere Tauern Nord, Niedere Tauern Alpenhauptkamm, Niedere Tauern Süd, Tennengebirge, Gosaukamm	

Avalanche problems



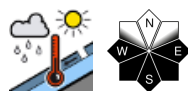
Danger ratings



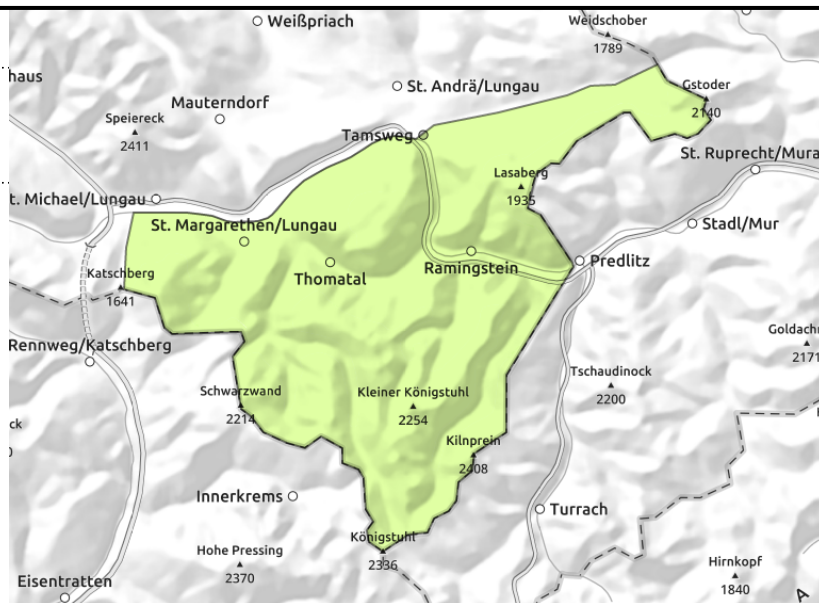
Expositions



Nockberge



on steep rocky slopes



Favorable situation

Avalanche danger is low. Naturally triggered small wet loose-snow avalanches can be expected on very steep sunny slopes. Avalanche activity will increase as the day progresses. Small slab avalanches can trigger near ridgelines on NW/N/E facing slopes in steep terrain only in few spots. Danger zones occur esp. behind discontinuities and in very steep gullies.

Snowpack structure

A thin melt-freeze crust can form at night, and quickly softens during the day. The fresh snow from the beginning of the week has settled, generally well bonded with the old snowpack surface. The old snowpack is compact, thoroughly wet except on shady slopes above 2000 m (still reserves of cold).

Weather

On Friday, intermittent sunshine, cloudbanks passing through (sometimes heavy, creating diffuse light), the peaks will be in the clear. It will stay dry. Winds only light. At 2000 m: 4-7 degrees.

Outlook

Danger of wet loose-snow avalanches will decrease.

Avalanche problems



Danger ratings



Expositions



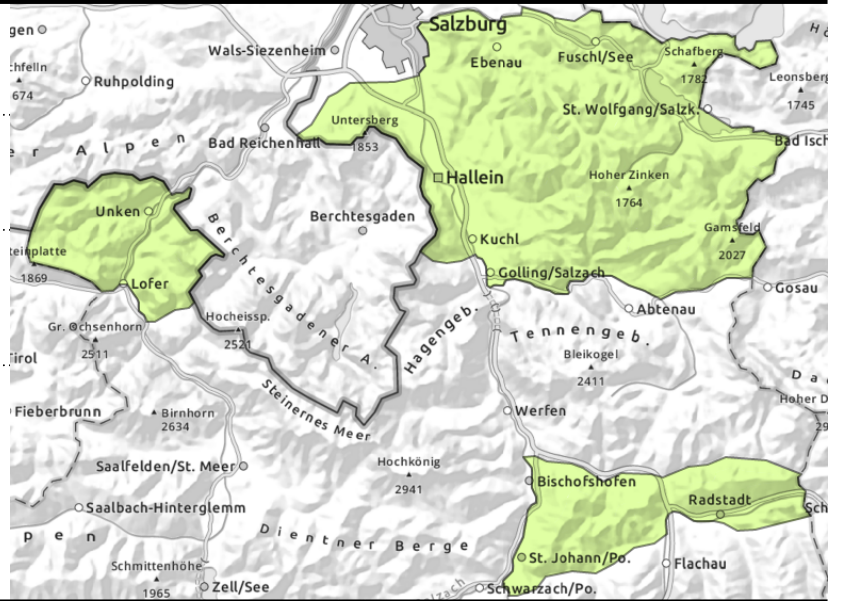
Chiemgauer Alpen, Heutal, Reiteralpe, Osterhorngruppe, Gamsfeldgruppe, Untersbergstock, Pongauer Grasberge



possible at any time of day, on extremely steep grass-covered slopes



on steep rocky slopes



Avoid zones below glide cracks

Avalanche danger is LOW. On steep grass-covered slopes in all aspects which have not yet discharged, glide-snow avalanches reaching medium size are possible at any time of day or night. Avoid zones below glide cracks. Naturally triggered wet loose-snow avalanches can be expected in steep sunny terrain, activity increases as the day progresses, releases mostly small.

Snowpack structure

A thin melt-freeze crust can form at night, and quickly softens during the day. The fresh snow from the beginning of the week has settled, generally well bonded with the old snowpack surface. On sunny slopes the slopes were often bare of snow before the snowfall on Sunday. The snowpack glides over very steep slopes on smooth ground.

Weather

On Friday, intermittent sunshine, cloudbanks passing through (sometimes heavy, creating diffuse light), the peaks will be in the clear. It will stay dry. Winds only light. At 2000 m: 4-7 degrees.

Outlook

Danger of wet loose-snow avalanches will decrease.

Avalanche problems



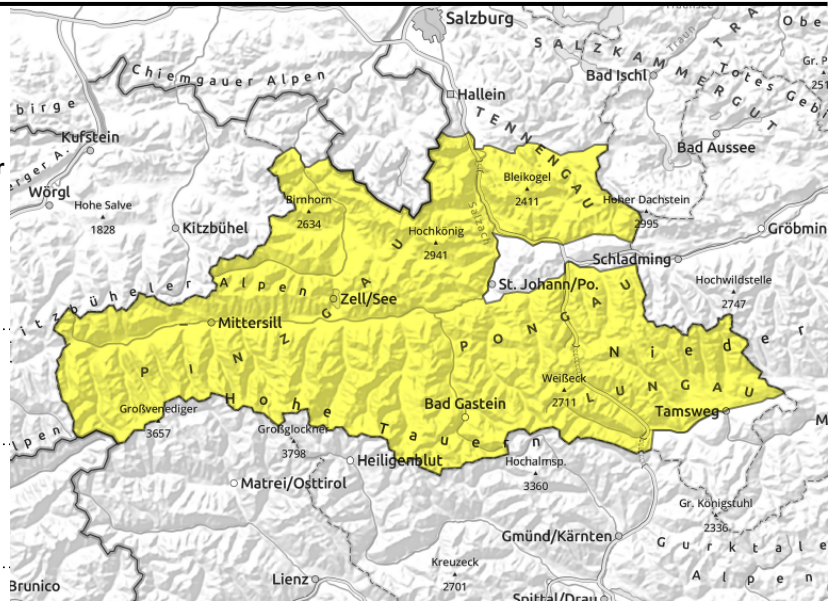
Danger ratings



Expositions



Großvenedigergruppe Nord, Großvenedigergruppe Alpenhauptkamm, Glocknergruppe Nord, Glocknergruppe Alpenhauptkamm, Goldberggruppe Nord, Goldberggruppe Alpenhauptkamm, Ankogelgruppe, Muhr, Oberpinzgauer Grasberge, Kitzbüheler Alpen, Glemmtal, Loferer und Leoganger Steinberge, Steinernes Meer, Hochkönig, Hagengebirge, Göllstock, Dientner Grasberge, Niedere Tauern Nord, Niedere Tauern Alpenhauptkamm, Niedere Tauern Süd, Tennengebirge, Gosaukamm



on steep rocky slopes



possible at any time of day, on extremely steep grass-covered slopes

Loose snow on extremely steep slopes: caution. Avoid slopes with glide cracks.

Avalanche danger is MODERATE. On steep sunny rocky slopes, small naturally triggered loose-snow avalanches can be expected, increasingly frequent as the day progresses, releases mostly small. On steep grass-covered slopes below 2700 m in all aspects which have not yet discharged, glide-snow avalanches reaching medium size are possible at any time of day or night. Avoid zones below glide cracks!

Above 2400 m the freshly generated snowdrift accumulations can trigger a small slab by minimum additional loading. Such danger zones occur esp. on NW/N/E/SE facing steep slopes, behind discontinuities and in gullies. Beware terrain where you can take a fall and discontinuities in the terrain.

Snowpack structure

The fresh snowfall from the beginning of the week has settled, is generally well bonded with the old snowpack surface. The old snowpack is compact, thoroughly wet except on shady slopes above 2000 m, on sunny slopes up to 2600 m, often wet down to the ground which makes the snow glide over smooth slopes

On shady slopes the snowpack above 2400 m still has reserves of cold, weak loose layers can develop. A faceted layer is evident at 1900-2300 m in transitions from loose snow to the old snowpack base. The snow lying atop of it is unbonded, thus, does not constitute a slab.

Weather

On Friday, intermittent sunshine, cloudbanks passing through (sometimes heavy, creating diffuse light), the peaks will be in the clear. It will stay dry. Winds only light. At 2000 m: 4-7 degrees.

Outlook

Danger of wet loose-snow avalanches will decrease.

Translated by Jeffrey McCabe, www.creativtrans.com

Avalanche problems



Danger ratings



Expositions

