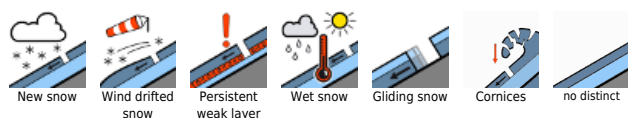


Gliding snow activity, snowdrift problem above the treeline

	2000 m Nockberge	
	Chiemgauer Alpen, Heutal, Reiteralpe, Osterhorngruppe, Gamsfeldgruppe, Untersbergstock, Pongauer Grasberge	
	Großenedigergruppe Nord, Großenedigergruppe Alpenhauptkamm, Glocknergruppe Nord, Glocknergruppe Alpenhauptkamm, Goldberggruppe Nord, Goldberggruppe Alpenhauptkamm, Ankogelgruppe, Muhr, Oberpinzgauer Grasberge, Kitzbüheler Alpen, Glemmtal, Loferer und Leoganger Steinberge, Steinernes Meer, Hochkönig, Hagengebirge, Göllstock, Dientner Grasberge, Niedere Tauern Nord, Niedere Tauern Alpenhauptkamm, Niedere Tauern Süd, Tennengebirge, Gosaukamm	

Avalanche problems



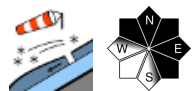
Danger ratings



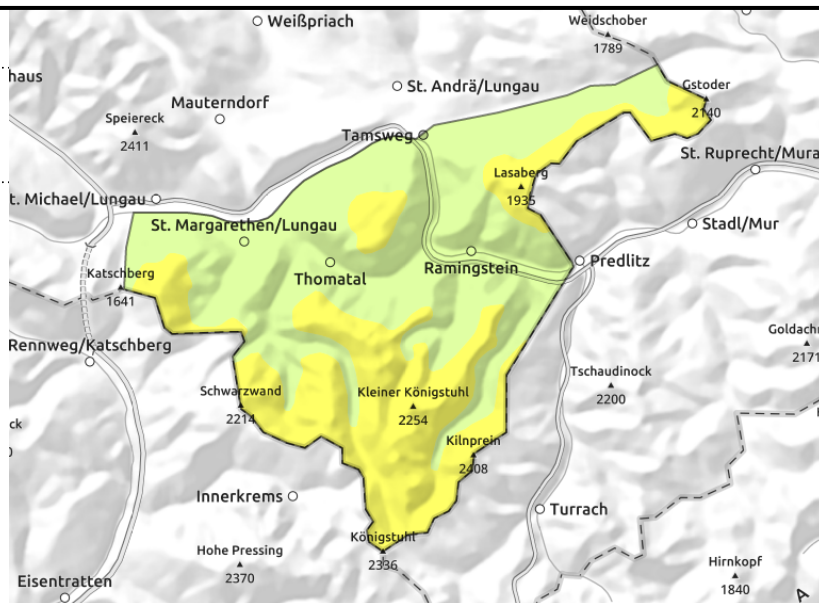
Expositions



Nockberge



near ridges, behind discontinuities, in gullies, thin/small snowdrift patches



Small snowdrifts above the treeline: caution

Avalanche danger above 2000 m is moderate, below that altitude danger is low. Naturally triggered loose-snow avalanches are possible in steep, sunny terrain. Above the treeline on steep NW/N/E/SE facing slopes, small slab avalanches can be triggered. Danger zones lie esp. behind discontinuities and in very steep gullies. Caution in terrain where falls are possible and discontinuities lurk.

Snowpack structure

Above 1800 m there has been 10 cm of fresh snow registered, deposited atop raw melt-freeze encrusted surfaces. Above the treeline in wind-exposed terrain, strong W/NW winds have transported the fresh snow and pressed it slightly. Blanketed fresh snow is the likeliest weak layer. At intermediate altitudes the fresh snow has bonded well with the moistened surface. The old snowpack is compact, often thoroughly wet, only on purely shady slopes above 2000 m does the snowpack still have reserves of cold.

Weather

During the nocturnal hours, heavy cloud, snowfall: 5 cm, snowfall level dropping to 700 m. In the Nockberge dry. On Tuesday, fog will reduce visibility. As of midday, increasingly sunny, improving visibility, it will remain dry. Light to moderate W/NW winds. At 1500 m: -2 degrees; at 2000 m: -6 degrees.

Outlook

Avalanche danger levels are not expected to change significantly.

Avalanche problems



Danger ratings



Expositions



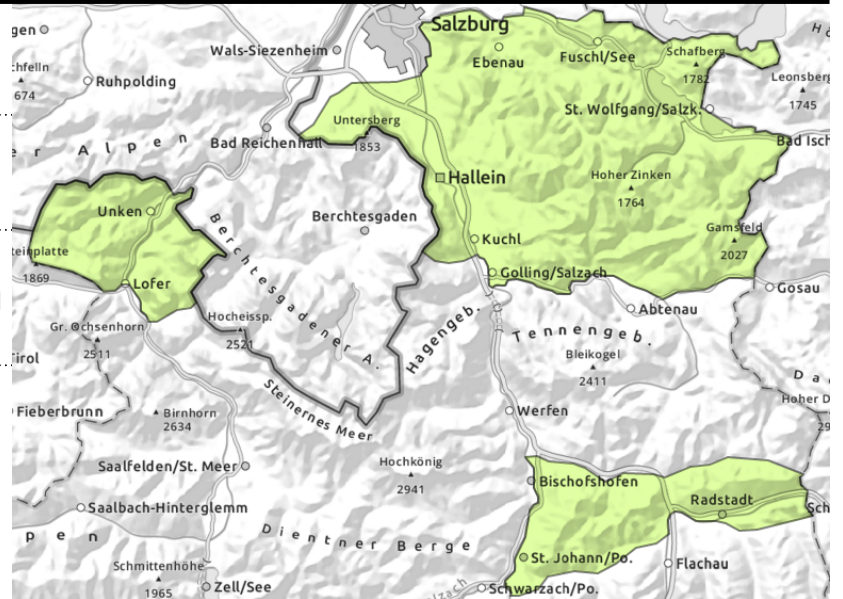
Chiemgauer Alpen, Heutal, Reiteralpe, Osterhorngruppe, Gamsfeldgruppe, Untersbergstock, Pongauer Grasberge



possible at any time of day, on extremely steep grass-covered slopes



behind discontinuities, thin/small snowdrift patches



Avoid zones below glide cracks

Avalanche danger is LOW. On steep grass-covered slopes in all aspects which have not yet discharged, glide-snow avalanches reaching medium size are possible at any time of day or night. Avoid zones below glide cracks. In sunny steep terrain, naturally triggered small loose-snow avalanches are possible. Above the treeline there are isolated danger zones where the fresh snowdrifts can trigger a small slab.

Snowpack structure

Atop a thoroughly wet old snowpack surface lie 15 cm of fresh snow, depending on altitude. On sunny slopes the ground was often bare prior to the fresh snowfall. The snowpack glides over smooth ground on grass-covered slopes. The W/NW winds transported little snow above the treeline.

Weather

During the nocturnal hours, heavy cloud, snowfall: 5 cm, snowfall level dropping to 700 m. In the Nockberge dry. On Tuesday, fog will reduce visibility. As of midday, increasingly sunny, improving visibility, it will remain dry. Light to moderate W/NW winds. At 1500 m: -2 degrees; at 2000 m: -6 degrees.

Outlook

Avalanche danger levels are not expected to change significantly.

Avalanche problems



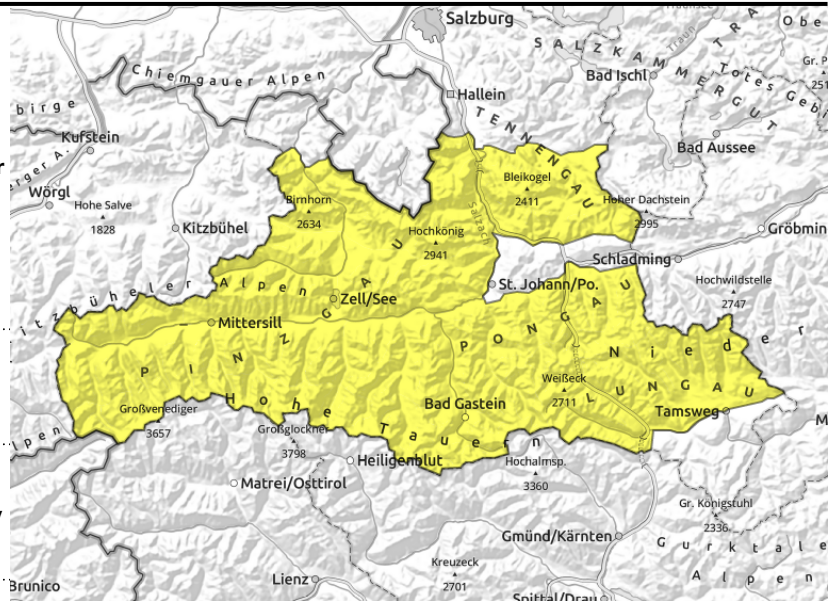
Danger ratings



Expositions



Großvenedigergruppe Nord, Großvenedigergruppe Alpenhauptkamm, Glocknergruppe Nord, Glocknergruppe Alpenhauptkamm, Goldberggruppe Nord, Goldberggruppe Alpenhauptkamm, Ankogelgruppe, Muhr, Oberpinzgauer Grasberge, Kitzbüheler Alpen, Glemmtal, Loferer und Leoganger Steinberge, Steinernes Meer, Hochkönig, Hagengebirge, Göllstock, Dientner Grasberge, Niedere Tauern Nord, Niedere Tauern Alpenhauptkamm, Niedere Tauern Süd, Tennengebirge, Gosaukamm



on extremely steep grass-covered slopes, possible at any time of day



near ridgelines, thin/small snowdrift patches

Avoid zones below glide cracks

Avalanche danger is MODERATE. On steep grass-covered slopes in all aspects which have not yet discharged, glide-snow avalanches reaching medium size are possible at any time of day or night. Avoid zones below glide cracks. In sunny steep terrain, naturally triggered small loose-snow avalanches are possible.

Above 2000 m the freshly generated snowdrift accumulations can trigger a small slab by minimum additional loading. Such danger zones occur esp. on NW/N/E/SE facing steep slopes, behind discontinuities and in gullies. Beware terrain where you can take a fall and discontinuities in the terrain.

Snowpack structure

Above 2000 m there has been 10-20 cm of fresh snow registered, up to 30 cm from place to place in Hohe Tauern, deposited atop raw melt-freeze encrusted surfaces, only seldom atop soft old snow (on high-alpine shady slopes). Above the treeline in wind-exposed terrain, strong W/NW winds have transported the fresh snow and pressed it slightly. Winds were strongest on the Lungau flank of Niedere Tauern. The old snowpack is compact, often thoroughly wet up to 2000 m, on sunny slopes up to 2600 m, only on purely shady slopes above 2000 m does the snowpack still have reserves of cold, here the old snow can develop weak layers.

Weather

During the nocturnal hours, heavy cloud, snowfall: 5 cm, snowfall level dropping to 700 m. In the Nockberge dry. On Tuesday, fog will reduce visibility. As of midday, increasingly sunny, improving visibility, it will remain dry. Light to moderate W/NW winds. At 1500 m: -2 degrees; at 2000 m: -6 degrees, at 3000 m: -10 degrees.

Outlook

Avalanche danger levels are not expected to change significantly.

Translated by Jeffrey McCabe, www.creativtrans.com

Avalanche problems



New snow



Wind drifted snow



Persistent weak layer



Wet snow



Gliding snow



Cornices



no distinct

Danger ratings



1 low



2 moderate



3 considerable



4 high



5 very high

Expositions

