

Gliding snow activity, thin snowdrift patches at high altitudes

	2000 m	Nockberge		
		Chiemgauer Alpen, Heutal, Reiteralpe, Osterhorngruppe, Gamsfeldgruppe, Untersbergstock, Pongauer Grasberge		
		Großvenedigergruppe Nord, Großvenedigergruppe Alpenhauptkamm, Glocknergruppe Nord, Glocknergruppe Alpenhauptkamm, Goldberggruppe Nord, Goldberggruppe Alpenhauptkamm, Ankogelgruppe, Muhr, Oberpinggauer Grasberge, Kitzbüheler Alpen, Glemmtal, Loferer und Leoganger Steinberge, Steinernes Meer, Hochkönig, Hagengebirge, Göllstock, Dientner Grasberge, Niedere Tauern Nord, Niedere Tauern Alpenhauptkamm, Niedere Tauern Süd, Tennengebirge, Gosaukamm		

Avalanche problems



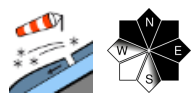
Danger ratings



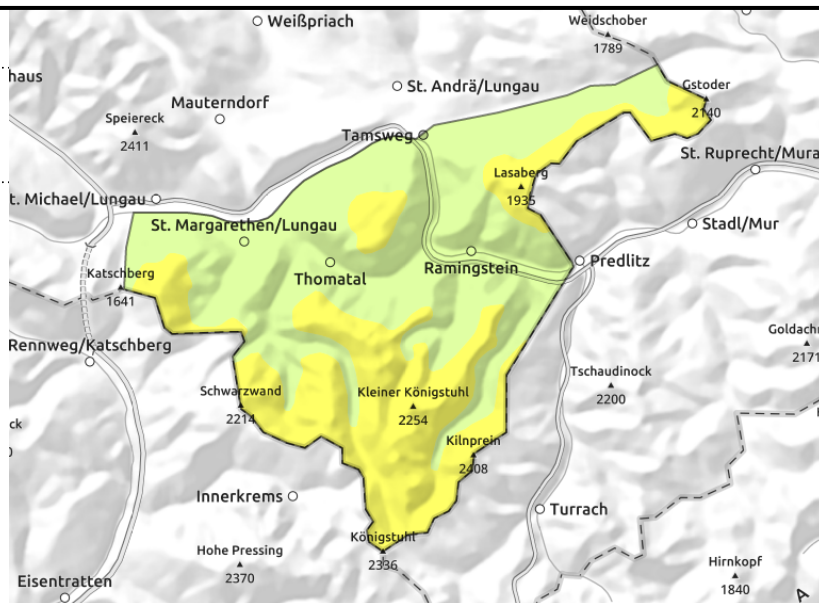
Expositions



Nockberge



near ridges, behind discontinuities, in gullies, thin/small snowdrift patches



Small snowdrifts above the treeline: caution

Avalanche danger above 2000 m is moderate, below that altitude danger is low. Naturally triggered loose-snow avalanches are possible in steep, sunny terrain. Above the treeline on steep NW/N/E/SE facing slopes, small slab avalanches can be triggered. Danger zones lie esp. behind discontinuities and in very steep gullies. Caution in terrain where falls are possible and discontinuities lurk.

Snowpack structure

Above 1800 m there has been 10 cm of fresh snow registered, deposited atop raw melt-freeze encrusted surfaces. Above the treeline in wind-exposed terrain, strong W/NW winds have transported the fresh snow and pressed it slightly. Blanketed fresh snow is the likeliest weak layer. At intermediate altitudes the fresh snow has bonded well with the moistened surface. The old snowpack is compact, often thoroughly wet, only on purely shady slopes above 2000 m does the snowpack still have reserves of cold.

Weather

On Sunday night, overcast skies, but hardly any snowfall.

On Monday, somewhat reduced visibility, intermittent sunshine but hardly any snowfall. The W/NW winds will be moderate, gusts reaching 30-40 km/hr. At 2000 m: -4 degrees.

Outlook

Avalanche danger levels are not expected to change significantly.

Avalanche problems



Danger ratings



Expositions



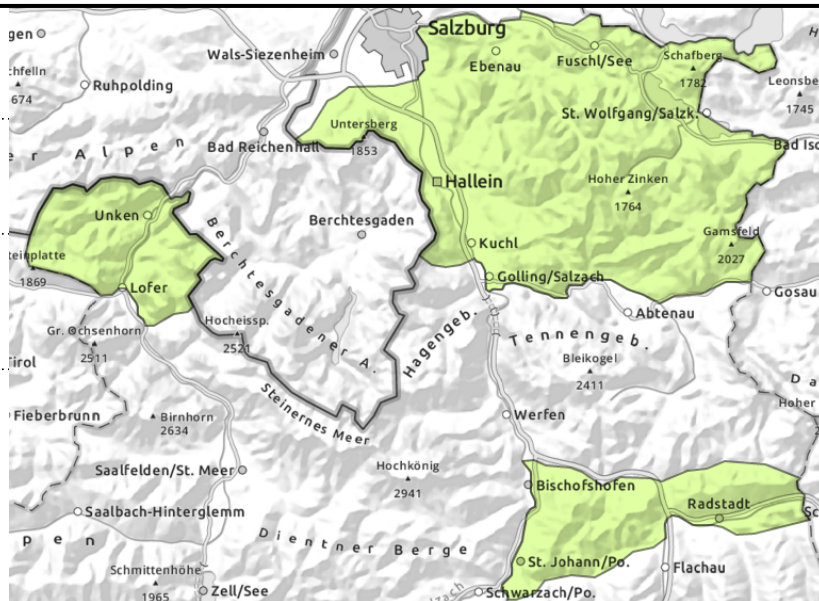
Chiemgauer Alpen, Heutal, Reiteralpe, Osterhorngruppe, Gamsfeldgruppe, Untersbergstock, Pongauer Grasberge



possible at any time of day, on extremely steep grass-covered slopes



behind discontinuities, thin/small snowdrift patches



Avoid zones below glide cracks

Avalanche danger is LOW. On steep grass-covered slopes in all aspects which have not yet discharged, glide-snow avalanches reaching medium size are possible at any time of day or night. Avoid zones below glide cracks. In sunny steep terrain, naturally triggered small loose-snow avalanches are possible. Above the treeline there are isolated danger zones where the fresh snowdrifts can trigger a small slab.

Snowpack structure

Atop a thoroughly wet old snowpack surface lie up to 15 cm of fresh snow, depending on altitude. On sunny slopes the ground was often bare prior to the fresh snowfall. The snowpack glides over smooth ground on grass-covered slopes. The W/NW winds transported little snow above the treeline.

Weather

On Sunday night, overcast skies, but hardly any snowfall.

On Monday, somewhat reduced visibility, intermittent sunshine but hardly any snowfall. The W/NW winds will be moderate, gusts reaching 30-40 km/hr. At 1500 m: -1 degree; at 2000 m: -4 degrees.

Outlook

On Monday night, a bit of fresh snow. Avalanche danger levels are not expected to change significantly.

Avalanche problems



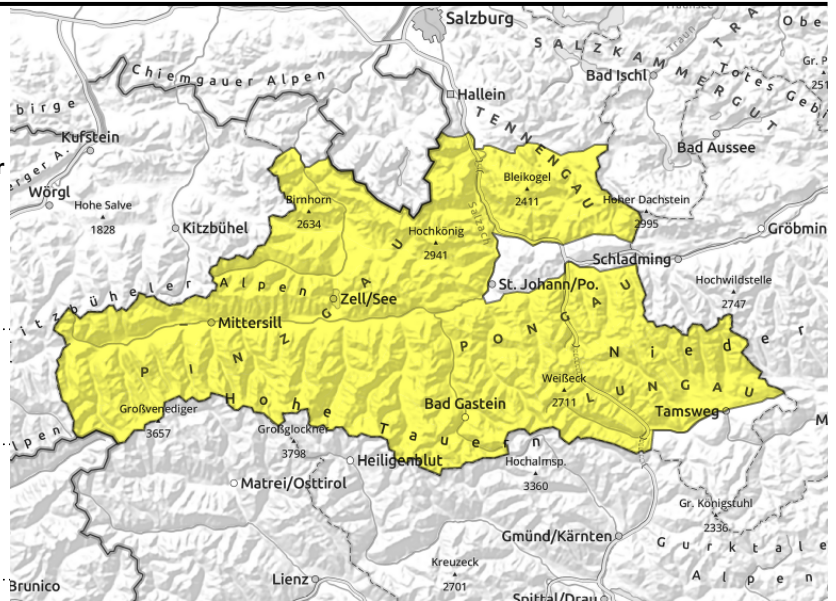
Danger ratings



Expositions



Großvenedigergruppe Nord, Großvenedigergruppe Alpenhauptkamm, Glocknergruppe Nord, Glocknergruppe Alpenhauptkamm, Goldberggruppe Nord, Goldberggruppe Alpenhauptkamm, Ankogelgruppe, Muhr, Oberpinzgauer Grasberge, Kitzbüheler Alpen, Glemmtal, Loferer und Leoganger Steinberge, Steinernes Meer, Hochkönig, Hagengebirge, Göllstock, Dientner Grasberge, Niedere Tauern Nord, Niedere Tauern Alpenhauptkamm, Niedere Tauern Süd, Tennengebirge, Gosaukamm



possible at any time of day, on extremely steep grass-covered slopes



near ridgelines, thin/small snowdrift patches

Avalanche danger is MODERATE. On steep grass-covered slopes in all aspects which have not yet discharged, glide-snow avalanches reaching medium size are possible at any time of day or night. Avoid zones below glide cracks. In sunny steep terrain, naturally triggered small loose-snow avalanches are possible.

Above 2000 m the freshly generated snowdrift accumulations can trigger a small slab by minimum additional loading. Such danger zones occur esp. on NW/N/E/SE facing steep slopes, behind discontinuities and in gullies. Beware terrain where you can take a fall and discontinuities in the terrain.

Snowpack structure

Above 2000 m there has been 10-15 cm of fresh snow registered, up to 20 cm from place to place, deposited atop raw melt-freeze encrusted surfaces, only seldom atop soft old snow (on high-alpine shady slopes). Above the treeline in wind-exposed terrain, strong W/NW winds have transported the fresh snow and pressed it slightly. Blanketed fresh snow is the likeliest weak layer. At intermediate altitudes the fresh snow has bonded well with the moistened surface. The old snowpack is compact, often thoroughly wet, only on purely shady slopes above 2000 m does the snowpack still have reserves of cold, here the old snow can develop weak layers.

Weather

On Sunday night, overcast skies, but hardly any snowfall.

On Monday, somewhat reduced visibility, intermittent sunshine but hardly any snowfall. The W/NW winds will be moderate, gusts reaching 30-40 km/hr. At 2000 m: -4 degrees; at 3000 m: -11 degrees.

Outlook

On Monday night, a bit of fresh snow. Avalanche danger levels are not expected to change significantly.

Translated by Jeffrey McCabe, www.creativtrans.com

Avalanche problems



Danger ratings



Expositions

