

## Cold front bringing fresh snow

	2200 m Niedere Tauern Süd, Nockberge	
	2400 m Niedere Tauern Alpenhauptkamm, Niedere Tauern Nord, Oberpinzgauer Grasberge, Kitzbüheler Alpen, Glemmtal, Loferer und Leoganger Steinberge, Steinernes Meer, Hochkönig, Hagengebirge, Göllstock, Dientner Grasberge, Tennengebirge, Gosaukamm, Pongauer Grasberge, Chiemgauer Alpen, Heutal, Reiteralpe, Osterhorngruppe, Gamsfeldgruppe, Untersbergstock	
	Großvenedigergruppe Nord, Großvenedigergruppe Alpenhauptkamm, Glocknergruppe Nord, Glocknergruppe Alpenhauptkamm, Goldberggruppe Nord, Goldberggruppe Alpenhauptkamm, Ankogelgruppe, Muhr	

### Avalanche problems



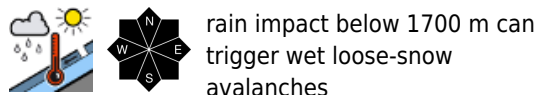
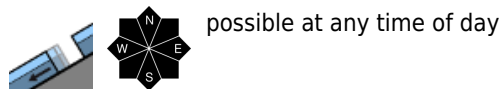
### Danger ratings



### Expositions



**Niedere Tauern Süd, Nockberge**



**Wet-snow problem due to rain impact**

Avalanche danger below 2200 m is moderate, above that altitude danger is low. Medium-sized wet loose-snow avalanches can be triggered naturally. In danger zones which have not yet discharged on steep grassy slopes in all aspects, glide-snow avalanches are possible at any time of day or night, medium releases possible. Avoid zones below glide cracks. In few danger zones (on steep shady slopes) isolated weak layers in the uppermost part of the snowpack can trigger, avalanches can grow to medium size.

**Snowpack structure**

Rain impact is burdening the snowpack stability below 1700 m. Above that altitude the fresh snow will be deposited atop moistened old snow and in wind-exposed zones atop hard melt-freeze crusts. The snowpack is thoroughly wet up to 2000 m, on sunny slopes up to 2600 m, wet down to the ground. On shady slopes above 2000 m, the snowpack still has reserves of cold, thus, loose layers can still weaken the snowpack.

**Weather**

Light to moderate rainfall/snowfall during the night (snowfall level at 1400-1700 m, up to 5 cm of fresh snow expected). On Sunday, heavily reduced visibility due to clouds and fog. Rainfall/snowfall esp. in the morning, snowfall level dropping to 1200 m at midday (5-10 cm expected). The W/NW winds will be moderate to strong (gusts at 30 km/hr). At 2000 m: -1 degree.

**Outlook**

On Monday, gliding snow will remain the main problem. On sunny, extremely steep terrain, moderate naturally triggered loose-snow activity.

**Avalanche problems**



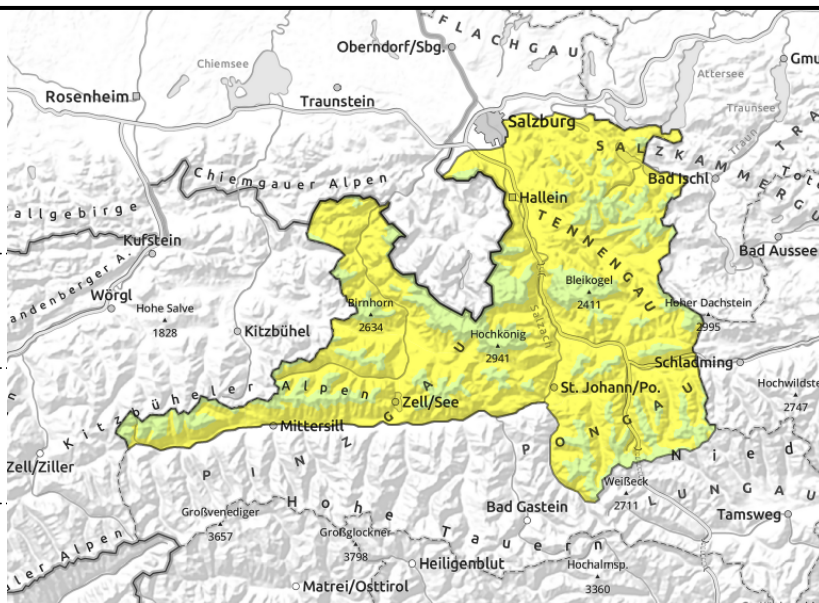
**Danger ratings**



**Expositions**



**Niedere Tauern Alpenhauptkamm, Niedere Tauern Nord, Oberpinzgauer Grasberge, Kitzbüheler Alpen, Glemmtal, Loferer und Leoganger Steinberge, Steinernes Meer, Hochkönig, Hagengebirge, Göllstock, Dientner Grasberge, Tennengebirge, Gosaukamm, Pongauer Grasberge, Chiemgauer Alpen, Heutal, Reiteralpe, Osterhorngruppe, Gamsfeldgruppe, Untersbergstock**



2400 m



possible at any time of day, on extremely steep grass-covered slopes



naturally triggered loose-snow avalanches below 2000 m due to rain impact

## Wet-snow problem due to rain impact

Avalanche danger is moderate below 2400 m, above that altitude danger is low. Due to rain impact, naturally triggered wet loose-snow avalanches (small-to-medium sized) are possible. On steep grass-covered slopes in all aspects which have not yet discharged, glide-snow avalanches reaching medium size are possible at any time of day or night. Avoid zones below glide cracks.

In few danger zones (on shady slopes above 2400 m) isolated weak layers in the uppermost part of the snowpack can trigger by large additional loading, slab avalanches can grow to medium size, in isolated cases to large size.

## Snowpack structure

Rain impact is burdening snowpack stability below 2000 m. Above that altitude the fresh snow will be deposited atop moistened old snow and in wind-exposed zones atop hard melt-freeze crusts. The snowpack is thoroughly wet up to 2000 m, on sunny slopes up to 2600 m, wet down to the ground. On shady slopes above 2000 m, the snowpack still has reserves of cold, thus, loose layers can still weaken the snowpack.

## Weather

Tonight during the nocturnal hours the foehn will collapse. Clouds will become heavy and rainfall/snowfall (5-10 cm) is expected after midnight. It could rain up to 2000 m.

On Sunday, heavily reduced visibility due to clouds and fog. Rainfall/snowfall esp. in the morning, snowfall level dropping to 1200 m at midday (5-10 cm expected). The W/NW winds will be moderate to strong (gusts at 30 km/hr). At 2000 m: -1 degree, at 3000 m: -8 degrees.

## Outlook

On Monday, gliding snow will remain the main problem. On sunny, extremely steep terrain, moderate naturally triggered loose-snow activity.

### Avalanche problems



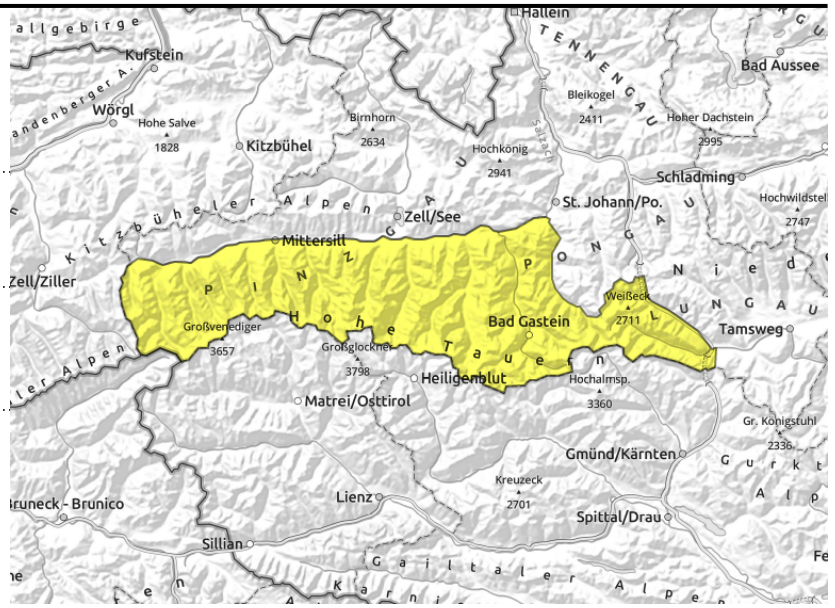
### Danger ratings



### Expositions



**Großvenedigergruppe Nord, Großvenedigergruppe Alpenhauptkamm, Glocknergruppe Nord, Glocknergruppe Alpenhauptkamm, Goldberggruppe Nord, Goldberggruppe Alpenhauptkamm, Ankogelgruppe, Muhr**



below 2600 m, possible at any time of day



fresh snow will cover foehn-induced snowdrifts, triggerable in gullies and very steep transitions, also distant from ridges

## Fresh snowfall will cover foehn-generated snowdrifts. Rain impact a burden below 2000 m.

Avalanche danger is moderate. In very steep terrain below 2000 m, naturally triggered medium-sized wet loose-snow avalanches are possible. In addition, on steep grass-covered slopes in all aspects which have not yet discharged, glide-snow avalanches can trigger at any time of day or night, in isolated cases grow to large size. Avoid zones below glide cracks.

In few danger zones above 2400 m on sunny slopes there are weak layers in the uppermost part of the snowpack, triggerable by large additional loading, releases medium, occasionally large-sized. In moderately steep terrain, however, the powder atop a hardened snowpack base can be fully enjoyed.

### Snowpack structure

Rain impact is burdening snowpack stability below 2000 m. Above that altitude the fresh snow will be deposited atop moistened old snow and in wind-exposed zones atop hard melt-freeze crusts. The snowpack is thoroughly wet up to 2000 m, on sunny slopes up to 2600 m, wet down to the ground. On shady slopes above 2000 m, the snowpack still has reserves of cold, thus, loose layers can still weaken the snowpack.

### Weather

Tonight during the nocturnal hours the foehn will collapse. Clouds will become heavy and rainfall/snowfall (5-10 cm) is expected after midnight. It could rain up to 2000 m.

On Sunday, heavily reduced visibility due to clouds and fog. Rainfall/snowfall esp. in the morning, snowfall level dropping to 1200 m at midday (5-10 cm expected). The W/NW winds will be moderate to strong (gusts at 30 km/hr). At 2000 m: -1 degree, at 3000 m: -8 degrees.

### Outlook

On Monday, gliding snow will remain the main problem. On sunny, extremely steep terrain, moderate naturally triggered loose-snow activity.

Translated by Jeffrey McCabe, [www.creativtrans.com](http://www.creativtrans.com)

#### Avalanche problems



New snow



Wind drifted snow



Persistent weak layer



Wet snow



Gliding snow



Cornices



no distinct

#### Danger ratings



1

low



2

moderate



3

considerable



4

high



5

very high

#### Expositions

