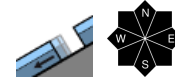


Gliding snow problem at the forefront

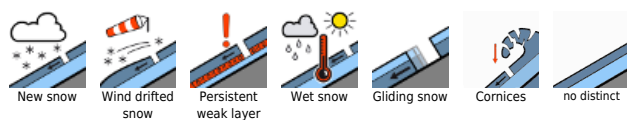
1 Oberpinzgauer Grasberge, Kitzbüheler Alpen, Glemmtal, Dientner Grasberge, Pongauer Grasberge, Chiemgauer Alpen, Heutal, Reiteralpe, Untersbergstock, Osterhorngruppe, Gamsfeldgruppe, Loferer und Leoganger Steinberge, Steinernes Meer, Hochkönig, Hagengebirge, Göllstock, Tennengebirge, Gosaukamm



1
2 2600 m
 Großvenedigergruppe Alpenhauptkamm, Glocknergruppe Alpenhauptkamm, Goldberggruppe Alpenhauptkamm, Ankogelgruppe, Muhr, Niedere Tauern Alpenhauptkamm, Niedere Tauern Süd, Nockberge, Großvenedigergruppe Nord, Glocknergruppe Nord, Goldberggruppe Nord, Niedere Tauern Nord



Avalanche problems



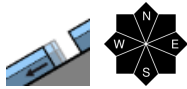
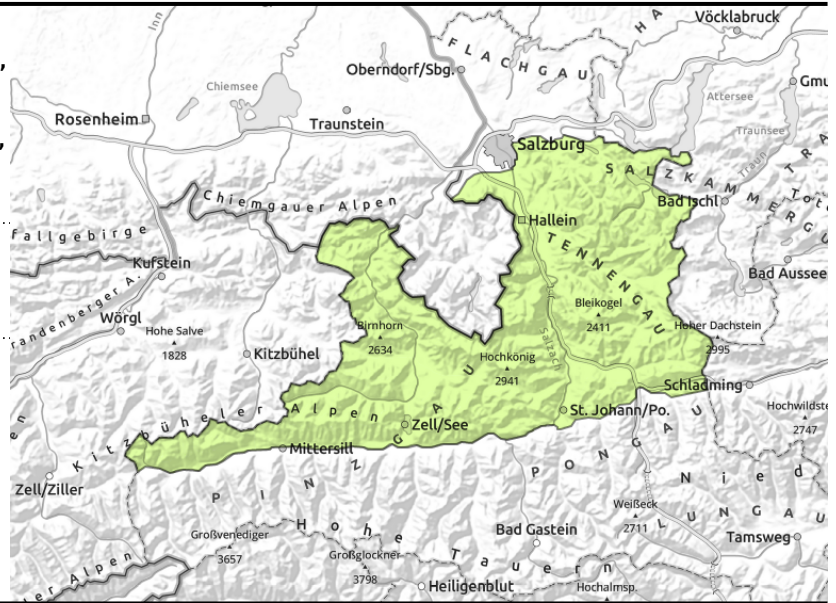
Danger ratings



Expositions



Oberpinzgauer Grasberge, Kitzbüheler Alpen, Glemmtal, Dientner Grasberge, Pongauer Grasberge, Chiemgauer Alpen, Heutal, Reiteralpe, Untersbergstock, Osterhorngruppe, Gamsfeldgruppe, Loferer und Leoganger Steinberge, Steinernes Meer, Hochkönig, Hagengebirge, Göllstock, Tennengebirge, Gosaukamm



possible at any time of day

Generally low danger

Avalanche danger is generally low. Main latent problem: glide-snow avalanches. In danger zones which have not yet discharged on steep grassy slopes in all aspects, glide-snow avalanches are possible at any time of day or night, medium releases possible. Avoid zones below glide cracks.

Snowpack structure

The snowpack is compact and thoroughly wet up to 2000 m, on sunny slopes up to 2600 m, wet down to the ground. On shady slopes above 2400 m, the snowpack still has reserves of cold, thus, loose layers can still weaken the snowpack.

Weather

Nocturnal skies on Thursday night will be mostly overcast.

On Friday, moderate-to-brisk southerly foehn winds will be blowing over the mountains, peaks will remain in the clear, visibility good, intermittent sunshine. At 2000 m: +1 degree.

Outlook

Avalanche danger levels are not expected to change significantly. On Sunday, fresh snow.

Avalanche problems



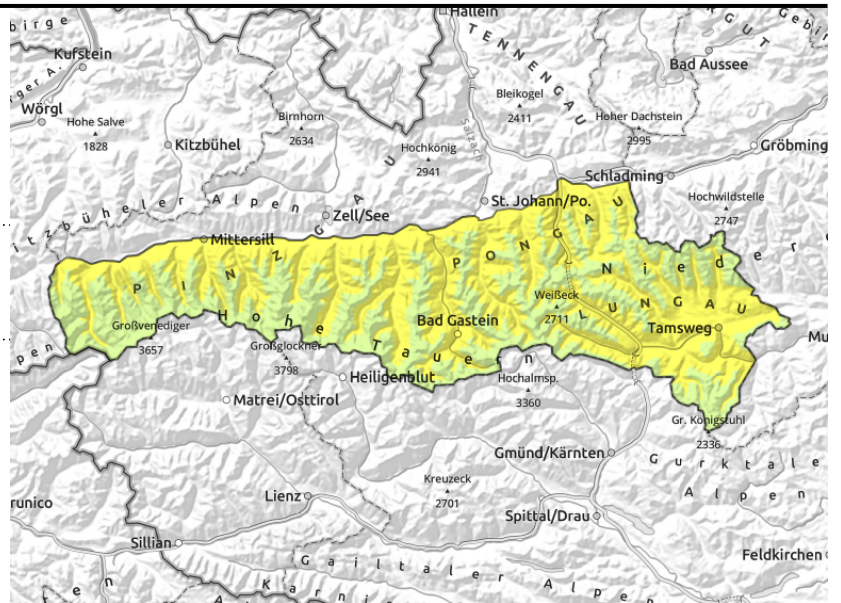
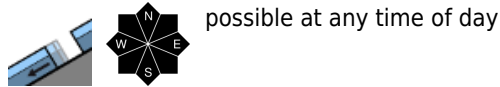
Danger ratings



Expositions



**Großvenedigergruppe Alpenhauptkamm,
Glocknergruppe Alpenhauptkamm, Goldberggruppe
Alpenhauptkamm, Ankogelgruppe, Muhr, Niedere
Tauern Alpenhauptkamm, Niedere Tauern Süd,
Nockberge, Großvenedigergruppe Nord,
Glocknergruppe Nord, Goldberggruppe Nord,
Niedere Tauern Nord**



Storm-strength foehn winds

Avalanche danger is moderate below 2600 m, above that altitude danger is low. On steep grass-covered slopes in all aspects which have not yet discharged, glide-snow avalanches can release at any time of day or night, releases medium, even large-sized are possible in high-altitude starting zones where the snowpack is deep. Avoid zones below glide cracks.

In few danger zones (on shady slopes above 2400 m) isolated weak layers in the uppermost part of the snowpack can trigger by large additional loading, slab avalanches can grow to medium size, in isolated cases to large size. Caution urged in terrain with danger of falling. Small fresh snowdrifts can be generated, but will be unlikely to trigger.

Snowpack structure

The snowpack is compact and thoroughly wet up to 2000 m, on sunny slopes up to 2600 m, wet down to the ground. On shady slopes above 2200 m, the snowpack still has reserves of cold, thus, loose layers can still weaken the snowpack.

Weather

Nocturnal skies on Thursday night will be mostly overcast.

Along the Main Tauern Ridge and Nockberge, clouds from the south will become lodged, mostly poor visibility. During the course of the day, minor rainfall (snowfall above 1600 m) is possible, up to 5 cm of fresh snow. Further north visibility will be better, winds lighter. Foehn wind will be blowing in Tauern and the typical foehn lanes at up to 100 km/hr, in the Nockberge at 60 km/hr. At 2000 m: 0 degrees; at 3000 m: -5 degrees.

Outlook

Avalanche danger levels are not expected to change significantly. On Sunday, fresh snow.

Translated by Jeffrey McCabe, www.creativtrans.com

Avalanche problems



Danger ratings



Expositions

