

Gliding snow problem at the forefront



Loferer und Leoganger Steinberge, Steinernes Meer, Hochkönig, Hagengebirge, Göllstock, Tennengebirge, Gosaukamm



Oberpinzgauer Grasberge, Kitzbüheler Alpen, Glemmtal, Dientner Grasberge, Pongauer Grasberge, Niedere Tauern Nord, Nockberge, Chiemgauer Alpen, Heutal, Reiteralpe, Untersbergstock, Osterhorngruppe, Gamsfeldgruppe



2600 m

Großvenedigergruppe Nord, Großvenedigergruppe Alpenhauptkamm, Glocknergruppe Nord, Glocknergruppe Alpenhauptkamm, Goldberggruppe Alpenhauptkamm, Ankogelgruppe, Muhr, Niedere Tauern Alpenhauptkamm, Niedere Tauern Süd, Goldberggruppe Nord



Avalanche problems



Danger ratings



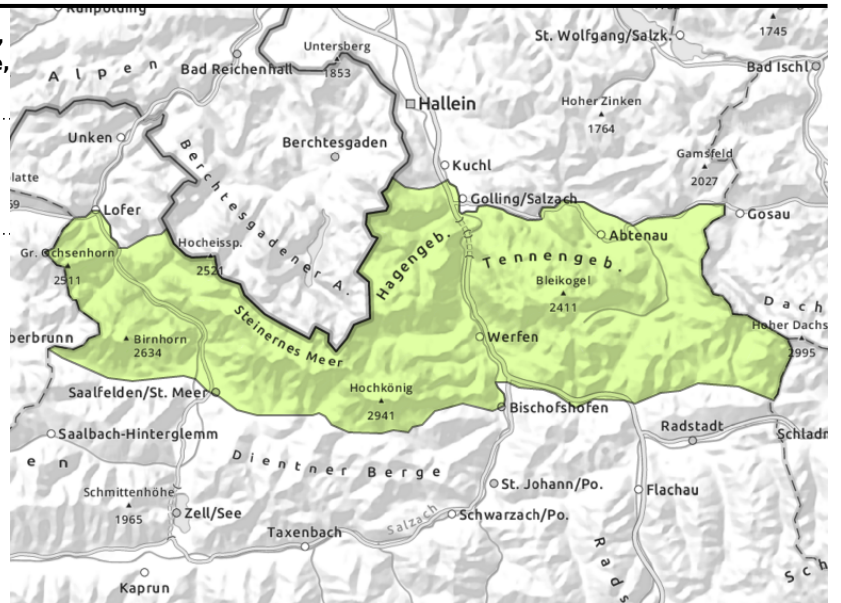
Expositions



Loferer und Leoganger Steinberge, Steinernes Meer, Hochkönig, Hagengebirge, Göllstock, Tennengebirge, Gosaukamm



possible at any time of day



Favorable conditions

Avalanche danger is generally low. Main problem: glide-snow avalanches. In danger zones which have not yet discharged on steep grassy slopes in all aspects, glide-snow avalanches are possible at any time of day or night, medium releases possible, on sunny slopes up to 2600 m. Avoid zones below glide cracks.

On high altitude shady slopes (above 2200 m) isolated weak layers in the snowpack can be problematic, triggerable mostly near ridges, behind discontinuities and in transitions from shallow to deeper snow on steep shady slopes, sometimes reaching large size. Slab avalanches from snowdrifts remain small, occasionally medium-sized. Caution of falling.

Snowpack structure

The snowpack is compact and thoroughly wet up to 2000 m, on sunny slopes up to 2600 m, wet down to the ground. On shady slopes above 2200 m, the snowpack still has reserves of cold, thus, loose layers can still weaken the snowpack. Beneath 1300 m there is hardly any snow on the ground.

Weather

On Wednesday night, a bit of rainfall or snowfall is possible from the heavy clouds, snowfall level at 1500 m.

On Thursday, visibility reduced somewhat, minor rainfall or snowfall is possible, snowfall level rising to 2000 m. Moderate to brisk S/W winds. At 2000 m: +1 degree.

Outlook

The gliding snow problem will persist. Avalanche danger levels are not expected to change significantly. There is currently no snow to be transported.

Avalanche problems



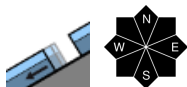
Danger ratings



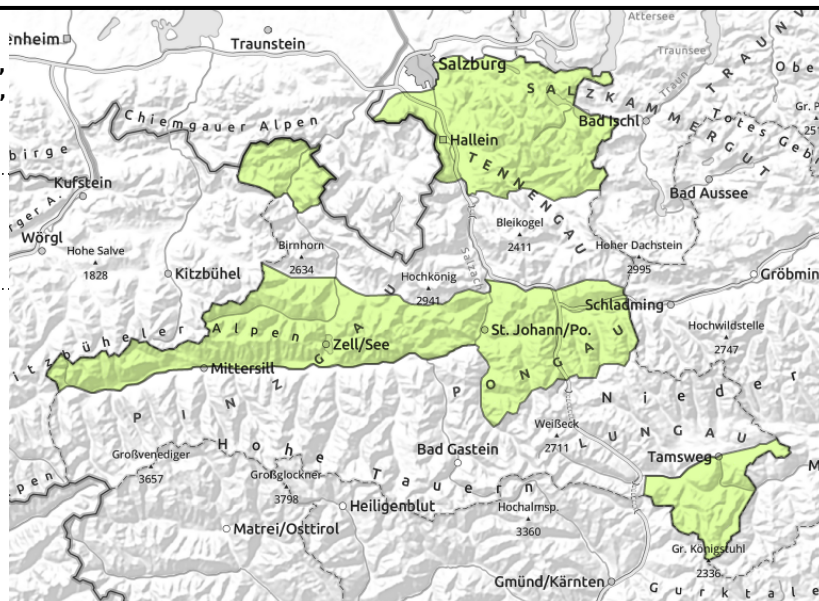
Expositions



**Oberpinzgauer Grasberge, Kitzbüheler Alpen,
 Glemmtal, Dientner Grasberge, Pongauer Grasberge,
 Niedere Tauern Nord, Nockberge, Chiemgauer Alpen,
 Heutal, Reiteralpe, Untersbergstock,
 Osterhorngruppe, Gamsfeldgruppe**



possible at any time of day



Generally low avalanche danger

Avalanche danger is generally low. Latent danger of glide-snow avalanches persists on steep grass-covered slopes, possible at any time of day or night, mostly small releases, on sunny slopes up to 2600 m. Avoid zones below glide cracks.

Snowpack structure

The snowpack is compact and thoroughly wet up to 2000 m, on sunny slopes up to 2600 m, wet down to the ground. On shady slopes above 2200 m, the snowpack still has reserves of cold, thus, loose layers can still weaken the snowpack

Weather

On Wednesday night, a bit of rainfall or snowfall is possible from the heavy clouds, snowfall level at 1500 m.

On Thursday, visibility reduced somewhat, minor rainfall or snowfall is possible, snowfall level rising to 2000 m. Moderate to brisk S/W winds. At 2000 m: +1 degree.

Outlook

The gliding snow problem will persist. Avalanche danger levels are not expected to change significantly. There is currently no snow to be transported.

Avalanche problems



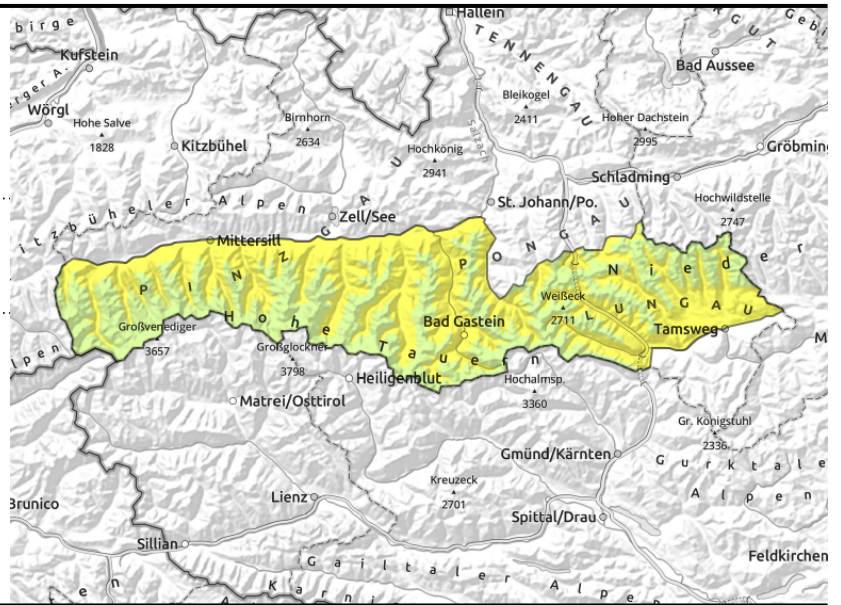
Danger ratings



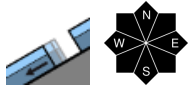
Expositions



Großvenedigergruppe Nord, Großvenedigergruppe Alpenhauptkamm, Glocknergruppe Nord, Glocknergruppe Alpenhauptkamm, Goldberggruppe Alpenhauptkamm, Ankogelgruppe Muhr, Niedere Tauern Alpenhauptkamm, Niedere Tauern Süd, Goldberggruppe Nord



possible at any time of day



Moderate avalanche danger due to glide-snow avalanches

Avalanche danger is moderate up to 2600 m, below that altitude danger is low. Glide-snow avalanches can trigger in zones which have not yet discharged on steep grassy slopes in all aspects, glide-snow avalanches can trigger, reach medium size, sometimes large size. Avoid zones below glide cracks.

In few danger zones above 2400 m on sunny slopes there are weak layers in the uppermost part of the snowpack, triggerable by large additional loading, releases medium, occasionally large-sized. Acute danger of falling.

Snowpack structure

The snowpack is compact and thoroughly wet up to 2000 m, on sunny slopes up to 2600 m, wet down to the ground. On shady slopes above 2200 m, the snowpack still has reserves of cold, thus, loose layers can still weaken the snowpack

Weather

On Wednesday night, skies will be overcast.

On Thursday, visibility reduced somewhat but the peaks will be in the clear. Moderate to brisk S/W winds. At 2000 m: +1 degree, at 3000 m: -5 degrees.

On Friday, strong-to-stormy southerly foehn winds will be blowing.

Outlook

The gliding snow problem will persist. Avalanche danger levels are not expected to change significantly. There is currently no snow to be transported.

Translated by Jeffrey McCabe, www.creativtrans.com

Avalanche problems



Danger ratings



Expositions

