





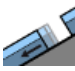


Gliding snow problem at the forefront

- 

Loferer und Leoganger Steinberge, Steinernes Meer, Hochkönig, Hagengebirge, Göllstock, Tennengebirge, Gosaukamm

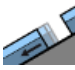



- 

Oberpinzgauer Grasberge, Kitzbüheler Alpen, Glemmtal, Dientner Grasberge, Pongauer Grasberge, Niedere Tauern Nord, Nockberge, Chiemgauer Alpen, Heutal, Reiteralpe, Untersbergstock, Osterhorngruppe, Gamsfeldgruppe



- 

2600 m

Großvenedigergruppe Nord, Großvenedigergruppe Alpenhauptkamm, Glocknergruppe Nord, Glocknergruppe Alpenhauptkamm, Goldberggruppe Alpenhauptkamm, Ankogelgruppe, Muhr, Niedere Tauern Alpenhauptkamm, Niedere Tauern Süd, Goldberggruppe Nord

Avalanche problems



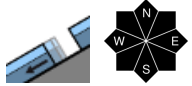
Danger ratings



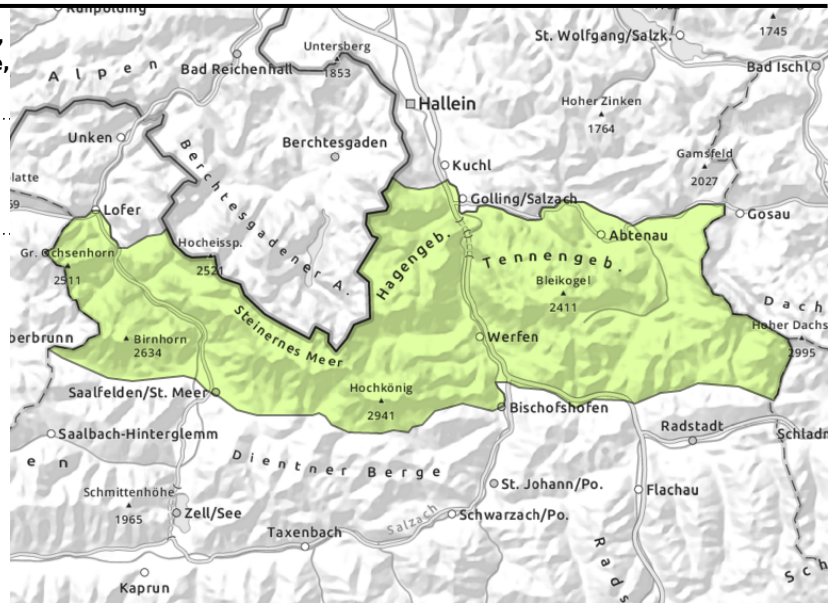
Expositions



Loferer und Leoganger Steinberge, Steinernes Meer, Hochkönig, Hagengebirge, Göllstock, Tennengebirge, Gosaukamm



possible at any time of day



Isolated weak layers at high altitudes

Avalanche danger is generally low. Main problem: glide-snow avalanches. In danger zones which have not yet discharged on steep grassy slopes in all aspects, glide-snow avalanches are possible at any time of day or night, medium releases possible, on sunny slopes up to 2600 m. Avoid zones below glide cracks.

On high altitude shady slopes (above 2200 m) isolated weak layers in the snowpack can be problematic, triggerable mostly near ridges, behind discontinuities and in transitions from shallow to deeper snow on steep shady slopes, sometimes reaching large size. Slab avalanches from snowdrifts remain small, occasionally medium-sized. Caution of falling.

Snowpack structure

Springtime conditions with firm snow, depending on hour of day and aspect. The snowpack is compact and thoroughly wet up to 2000 m, on sunny slopes up to 2600 m, wet down to the ground. On shady slopes above 2200 m, older snowdrift patches lie atop loose snowpack layers with near-surface faceted crystals, only seldom triggerable. Beneath 1300 m there is hardly any snow on the ground.

Weather

On Tuesday night, clear skies. On Wednesday morning still sunshine and good visibility. As of midday clouds moving in from the northwest, summits should stay in the clear. Strong westerly winds up to 60 km/hr. At 2000 m: 0 degrees.

Outlook

The gliding snow problem will persist. Avalanche danger levels are not expected to change significantly.

Avalanche problems



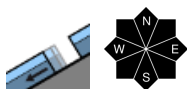
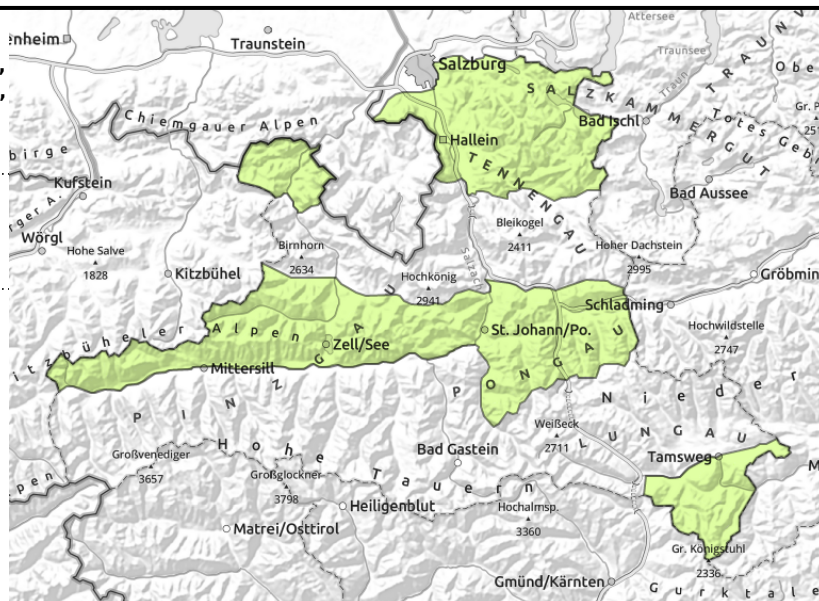
Danger ratings



Expositions



Oberpinzgauer Grasberge, Kitzbüheler Alpen, Glemmtal, Dientner Grasberge, Pongauer Grasberge, Niedere Tauern Nord, Nockberge, Chiemgauer Alpen, Heutal, Reiteralpe, Untersbergstock, Osterhorngruppe, Gamsfeldgruppe



possible at any time of day

Generally low danger

Avalanche danger is generally low. Latent danger of glide-snow avalanches persists on steep grass-covered slopes, possible at any time of day or night, mostly small releases, on sunny slopes up to 2600 m. Avoid zones below glide cracks.

Snowpack structure

Springtime conditions with firm snow, depending on hour of day and aspect. The snowpack is compact and thoroughly wet up to 2000 m, on sunny slopes up to 2600 m, wet down to the ground. Clouds will get heavier as day progresses, making diffuse light in the afternoon. Beneath 1300 m there is hardly any snow on the ground.

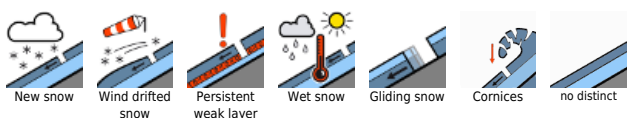
Weather

On Tuesday night, clear skies. On Wednesday morning still sunshine and good visibility. As of midday clouds moving in from the northwest, summits should stay in the clear. Strong westerly winds up to 60 km/hr. At 2000 m: 0 degrees.

Outlook

The gliding snow problem will persist. Avalanche danger levels are not expected to change significantly.

Avalanche problems



Danger ratings



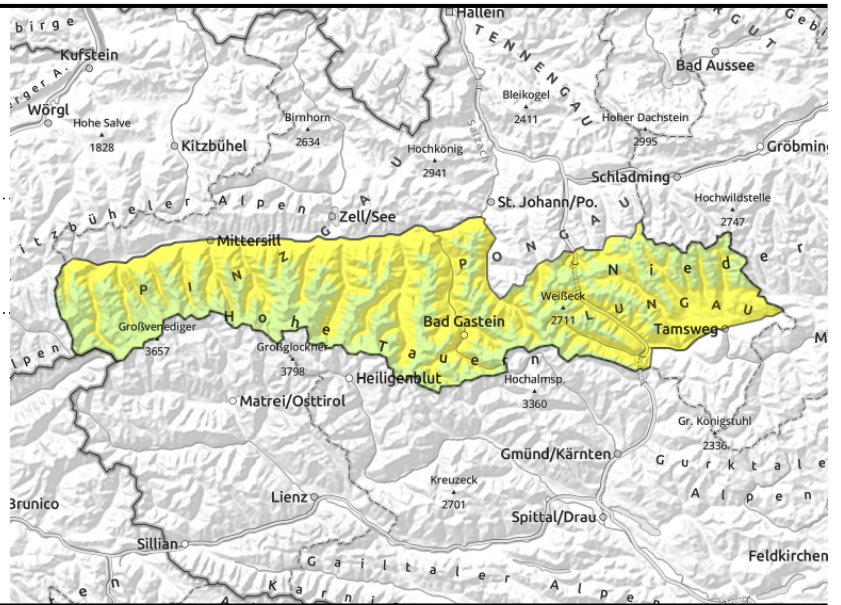
Expositions



Großvenedigergruppe Nord, Großvenedigergruppe
Alpenhauptkamm, Glocknergruppe Nord,
Glocknergruppe Alpenhauptkamm, Goldberggruppe
Alpenhauptkamm, Ankogelgruppe, Muhr, Niedere
Tauern Alpenhauptkamm, Niedere Tauern Süd,
Goldberggruppe Nord



isolated large avalanches
possible, possible at any time of
day



Moderate avalanche danger due to glide-snow avalanches: heed glide cracks. Isolated weak snowpack layers.

Avalanche danger is moderate up to 2600 m, below that altitude danger is low. Glide-snow avalanche activity is increasing due to wetness of the snowpack. In zones which have not yet discharged on steep grassy slopes in all aspects, glide-snow avalanches can trigger, reach medium size, sometimes large size. Avoid zones below glide cracks.

In few danger zones above 2400 m on sunny slopes there are weak layers in the uppermost part of the snowpack, triggerable by large additional loading, releases medium, occasionally large-sized. Acute danger of falling.

Snowpack structure

Springtime conditions with firm snow, depending on hour of day and aspect. The snowpack is compact and thoroughly wet up to 2000 m, on sunny slopes up to 2600 m, wet down to the ground. Clouds will get heavier as day progresses, making diffuse light in the afternoon. On shady slopes there are still reserves of cold in the snowpack above 2400 m, thus, weak layers could develop and weaken the snowpack.

Weather

On Tuesday night, clear skies. On Wednesday morning still sunshine and good visibility. As of midday clouds moving in from the northwest, summits should stay in the clear. Strong westerly winds up to 60 km/hr. At 2000 m: 0 degrees, at 3000 m: -6 degrees.

Outlook

The gliding snow problem will persist. Avalanche danger levels are not expected to change significantly.

Translated by Jeffrey McCabe, www.creativtrans.com

Avalanche problems



Danger ratings



Expositions

