
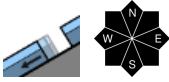



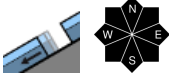

## Stormy and mild, gliding snow problem at the forefront

- 

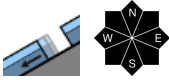
Loferer und Leoganger Steinberge, Steinernes Meer, Hochkönig, Hagengebirge, Göllstock, Tennengebirge, Gosaukamm


- 

Oberpinzgauer Grasberge, Kitzbüheler Alpen, Glemmtal, Dientner Grasberge, Pongauer Grasberge, Niedere Tauern Nord, Niedere Tauern Alpenhauptkamm, Niedere Tauern Süd, Nockberge, Chiemgauer Alpen, Heutal, Reiteralpe, Untersbergstock, Osterhorngruppe, Gamsfeldgruppe


- 

Großvenedigergruppe Nord, Großvenedigergruppe Alpenhauptkamm, Glocknergruppe Nord, Glocknergruppe Alpenhauptkamm, Goldberggruppe Nord, Goldberggruppe Alpenhauptkamm, Ankogelgruppe, Muhr



### Avalanche problems



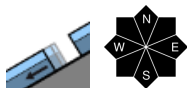
### Danger ratings



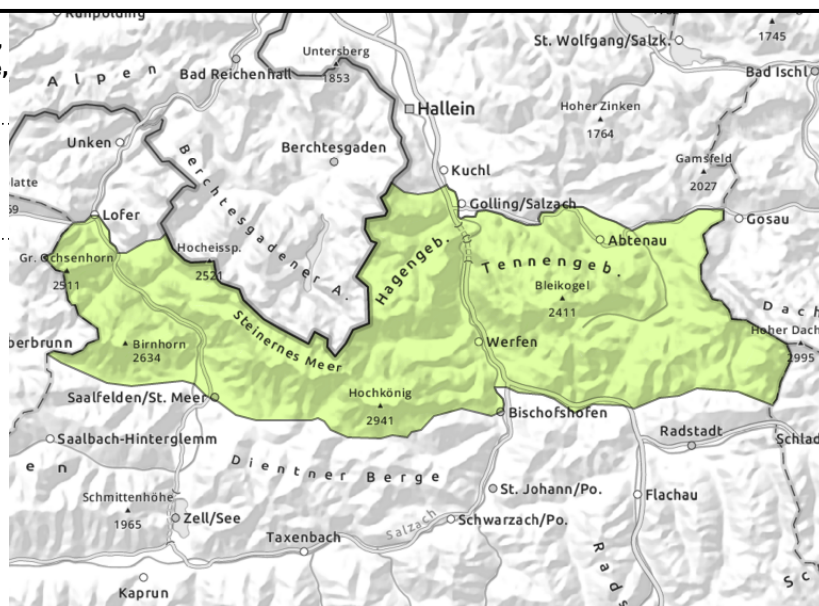
### Expositions



**Loferer und Leoganger Steinberge, Steinernes Meer, Hochkönig, Hagengebirge, Göllstock, Tennengebirge, Gosaukamm**



on grass-covered slopes,  
possible at any time of day



**Pay close heed to glide-snow/loose-snow avalanches. Isolated weak layers.**

Avalanche danger is generally low. Latent danger of glide-snow avalanches persists on steep grass-covered slopes, possible at any time of day or night, medium releases possible, on sunny slopes up to 2600 m. Avoid zones below glide cracks.

Due to daytime warming, moist-to-wet snow avalanches will trigger on sunny, rough and rocky slopes. On high altitude shady slopes (above 2200 m) isolated weak layers in the snowpack can be problematic, triggerable mostly near ridges, behind discontinuities and in transitions from shallow to deeper snow on steep shady slopes, sometimes reaching large size. Slab avalanches from snowdrifts remain small, occasionally medium-sized. Caution of falling.

**Snowpack structure**

The snowpack is compact and thoroughly wet up to 2000 m, on sunny slopes up to 2600 m, wet down to the ground. On shady slopes above 2200 m, older snowdrift patches lie atop loose snowpack layers with near-surface faceted crystals, only seldom triggerable. Moistened snowpack forfeits its firmness. Only at high altitudes on shady slopes are there still reserves of cold in the snowpack; it is also loose enough to be transported by the strong winds. Latent danger of glide-snow avalanches on steep slopes on smooth ground. Beneath 1300 m there is hardly any snow on the ground.

**Weather**

Low lying cloudbanks will persist overnight, the highest peaks will be in the clear, reducing visibility somewhat on Monday morning. Sunshine will prevail later in the day. Initially stormy W/NW winds, slackening off in the afternoon. At 1500 m: 2 and 8 degrees; at 2000 m: 0 and 4 degrees.

**Outlook**

The gliding snow problem will persist. Mild temperatures and lots of sunshine will make the snowpack wetter. Avalanche danger levels are not expected to change significantly.

**Avalanche problems**



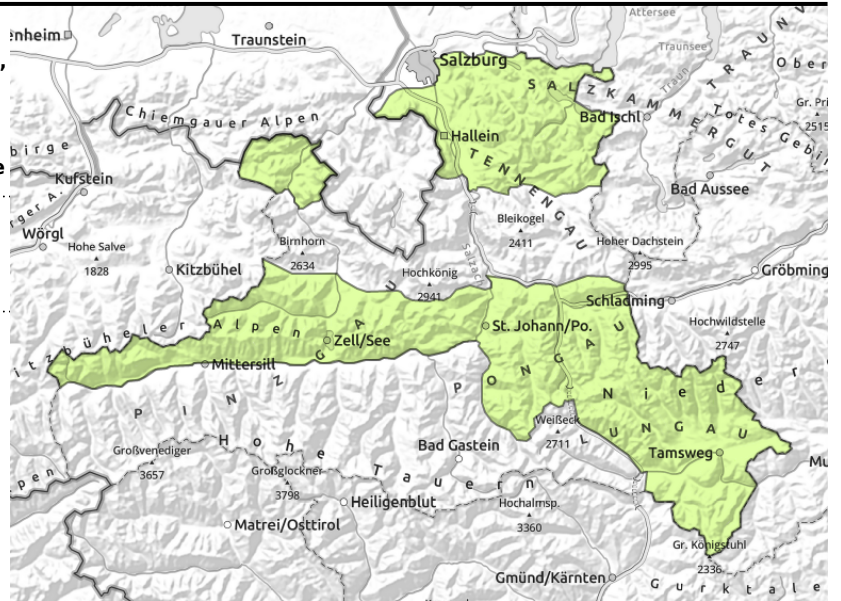
**Danger ratings**



**Expositions**



**Oberpinzgauer Grasberge, Kitzbüheler Alpen, Glemmtal, Dientner Grasberge, Pongauer Grasberge, Niedere Tauern Nord, Niedere Tauern Alpenhauptkamm, Niedere Tauern Süd, Nockberge, Chiemgauer Alpen, Heutal, Reiteralpe, Untersbergstock, Osterhorngruppe, Gamsfeldgruppe**



on grass-covered slopes,  
possible at any time of day

## Generally low avalanche danger but glide-snow avalanches possible

Avalanche danger is generally low. Latent danger of glide-snow avalanches persists on steep grass-covered slopes, possible at any time of day or night, medium releases possible, on sunny slopes up to 2600 m. Avoid zones below glide cracks. Danger of wet loose-snow slides on sunny rough and rocky slopes will increase as the day progresses.

### Snowpack structure

The snowpack is compact and thoroughly wet up to 2000 m, on sunny slopes up to 2600 m, wet down to the ground. Moistened snowpack forfeits its firmness. Only at high altitudes on shady slopes are there still reserves of cold in the snowpack; it is also loose enough to be transported by the strong winds. Latent danger of glide-snow avalanches on steep slopes on smooth ground. Beneath 1300 m there is hardly any snow on the ground.

### Weather

Star-studded skies on Sunday night in the Grassy Mountains and Niedere Tauern. Between Chiemgau Alps and Osterhorn Range, dense cloudbanks, , reducing visibility somewhat on Monday morning. Sunshine will prevail later in the day. Initially stormy W/NW winds, slackening off in the afternoon. At 1500 m: 2 and 8 degrees; at 2000 m: 0 and 4 degrees.

### Outlook

The gliding snow problem will persist. Mild temperatures and lots of sunshine will make the snowpack wetter. Avalanche danger levels are not expected to change significantly.

#### Avalanche problems



#### Danger ratings



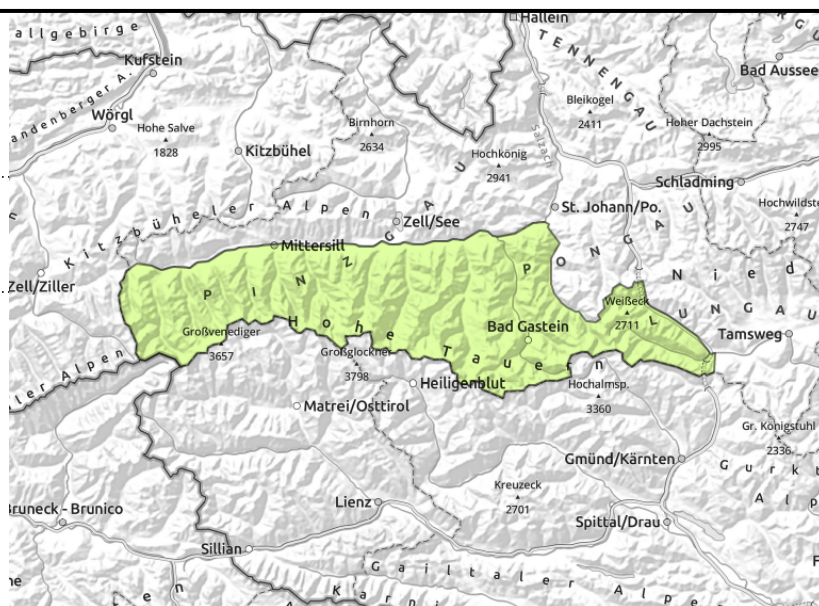
#### Expositions



**Großvenedigergruppe Nord, Großvenedigergruppe Alpenhauptkamm, Glocknergruppe Nord, Glocknergruppe Alpenhauptkamm, Goldberggruppe Nord, Goldberggruppe Alpenhauptkamm, Ankogelgruppe, Muhr**



in grass-covered terrain, isolated large avalanches possible, possible at any time of day



## The gliding snow problem predominates, heed risk of loose-snow slides. Isolated persistent weak layers.

Avalanche danger is generally low. Latent danger of glide-snow avalanches persists on steep grass-covered slopes, possible at any time of day or night, medium releases possible, on sunny slopes up to 2600 m. Avoid zones below glide cracks. Due to daytime warming, moist-to-wet snow avalanches will trigger on sunny, rough and rocky slopes. On high altitude shady slopes (above 2200 m) isolated weak layers in the snowpack can be problematic, triggerable mostly near ridges, behind discontinuities and in transitions from shallow to deeper snow on steep shady slopes, sometimes reaching large size. Slab avalanches from snowdrifts remain small, occasionally medium-sized. Caution of falling.

### Snowpack structure

The snowpack is compact and thoroughly wet up to 2000 m, on sunny slopes up to 2600 m, wet down to the ground. Moistened snowpack forfeits its firmness. Only above 2400 m on shady slopes are there still reserves of cold in the snowpack; it is also loose enough to be transported by the strong winds. Weak layers in the old snowpack are weakening the layering, there is a faceted layer evident on very steep sunny slopes above 2600 m. Latent danger of glide-snow avalanches on steep slopes on smooth ground.

### Weather

In Hohe Tauern, star-studded skies. Good visibility from the start and frequent sunshine. Initially stormy W/NW winds, slackening off in the afternoon. At 2000 m: 0 to 4 degrees; at 3000 m: -5 to -3 degrees..

### Outlook

The gliding snow problem will persist. Weak snowpack layers are dissolving only very gradually. Avalanche danger levels are not expected to change significantly.

Translated by Jeffrey McCabe, [www.creativtrans.com](http://www.creativtrans.com)

#### Avalanche problems



#### Danger ratings



#### Expositions

