






## In Northern Alps and Tauern some fresh snowdrifts. Elsewhere heed gliding snow problem.

- 

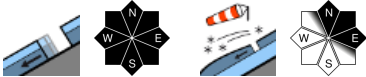
Loferer und Leoganger Steinberge, Steinernes Meer, Hochkönig, Hagengebirge, Göllstock, Tennengebirge, Gosaukamm, Chiemgauer Alpen, Heutal, Reiteralpe, Untersbergstock, Osterhorngruppe, Gamsfeldgruppe


- 

Oberpinzgauer Grasberge, Kitzbüheler Alpen, Glemmtal, Dientner Grasberge, Pongauer Grasberge, Niedere Tauern Nord, Niedere Tauern Alpenhauptkamm, Niedere Tauern Süd, Nockberge


- 

Großvenedigergruppe Nord, Großvenedigergruppe Alpenhauptkamm, Glocknergruppe Nord, Glocknergruppe Alpenhauptkamm, Goldberggruppe Nord, Goldberggruppe Alpenhauptkamm, Ankogelgruppe, Muhr



### Avalanche problems



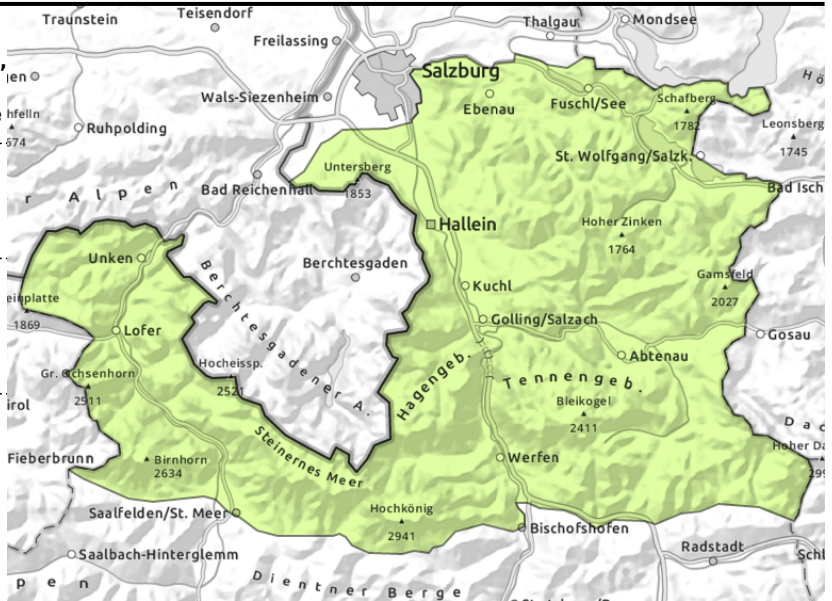
### Danger ratings



### Expositions



**Loferer und Leoganger Steinberge, Steinernes Meer, Hochkönig, Hagengebirge, Göllstock, Tennengebirge, Gosaukamm, Chiemgauer Alpen, Heutal, Reiteralpe, Untersbergstock, Osterhorngruppe, Gamsfeldgruppe**



on extremely steep grass-covered slopes, possible at any time of day



near ridges, behind discontinuities, in gullies, steep bowls

## Pay close heed to glide-snow/loose-snow avalanches. Avoid snowdrifts on shady slopes.

Avalanche danger is generally low. Latent danger of glide-snow avalanches persists on steep grass-covered slopes, possible at any time of day or night, medium releases possible, on sunny slopes up to 2600 m. Avoid zones below glide cracks. Danger of wet loose-snow slides on sunny rough and rocky slopes will increase as the day progresses.

On Saturday night, some snowfall and wind will generate snowdrift accumulations above 1500 m on N/E facing slopes, these will be trigger-prone on Sunday, but settle swiftly. Above 2200 m on shady slopes, older drifts can be triggered by large additional loading. The drifts are easily recognized, mostly near ridges, behind discontinuities and in very steep gullies and bowls. Slab avalanches from snowdrifts remain small, occasionally medium-sized. Caution of falling.

### Snowpack structure

Thin, fresh snowdrift patches blanket older drifts on shady slopes, in the interim they have settled. By Sunday morning below 2200 m, thin melt-freeze crusts will have formed, capable of bearing loads. Beneath these the snowpack is compact and thoroughly wet up to 2000 m, on sunny slopes up to 2600 m, wet down to the ground. On shady slopes above 2200 m, older snowdrift patches lie atop loose snowpack layers with near-surface faceted crystals, only seldom triggerable. Moistened snowpack forfeits its firmness. Latent danger of glide-snow avalanches on steep slopes on smooth ground. Beneath 1300 m there is hardly any snow on the ground.

### Weather

Saturday evening, precipitation from the north, but only minor amounts (most near Osterhorn range and Tennengebirge), snowfall level dropping to below 1500 m, then rising again on Sunday morning. Reduced visibility on Sunday, light rainfall possible, snowfall above 1800 m. Strong-to-stormy westerly winds. At 1500 m: 0 to +3 degrees; at 2000 m: -3 to 0 degrees; at 3000 m: -8 to -4 degrees.

### Outlook

The gliding snow problem will persist, mild temperatures and lots of sunshine will further moisten the snowpack. The snowdrift problem will recede.

#### Avalanche problems



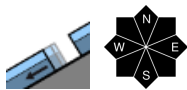
#### Danger ratings



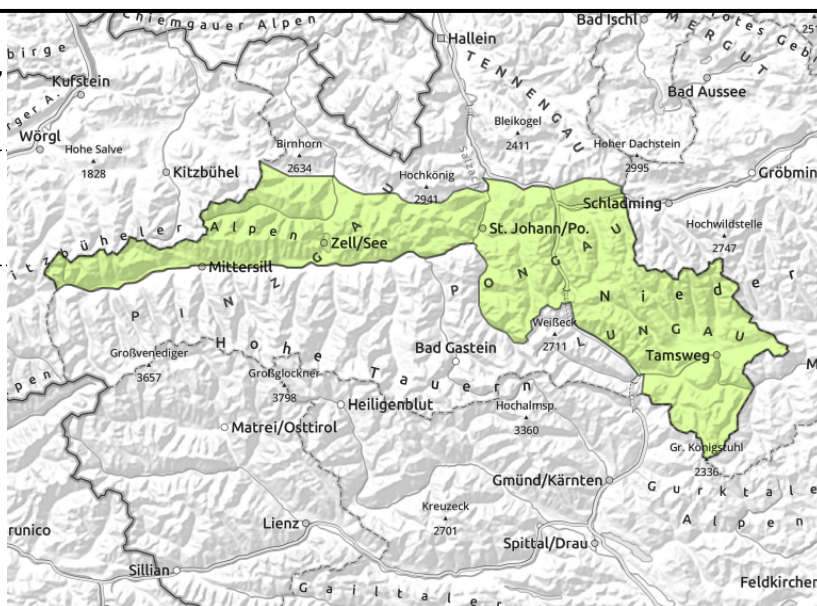
#### Expositions



**Oberpinzgauer Grasberge, Kitzbüheler Alpen, Glemmtal, Dientner Grasberge, Pongauer Grasberge, Niedere Tauern Nord, Niedere Tauern Alpenhauptkamm, Niedere Tauern Süd, Nockberge**



on extremely steep grass-covered slopes, possible at any time of day



## Generally low avalanche danger but small naturally triggered wet-snow/glide-snow avalanches possible

Avalanche danger is generally low. Latent danger of glide-snow avalanches persists on steep grass-covered slopes, possible at any time of day or night, medium releases possible, on sunny slopes up to 2600 m. Avoid zones below glide cracks. Danger of wet loose-snow slides on sunny rough and rocky slopes will increase as the day progresses.

### Snowpack structure

Thin, fresh snowdrift patches blanket older drifts on shady slopes, in the interim they have settled. By Sunday morning below 2200 m, thin melt-freeze crusts will have formed, capable of bearing loads. Beneath these the snowpack is compact and thoroughly wet up to 2000 m, on sunny slopes up to 2600 m, wet down to the ground. Moistened snowpack forfeits its firmness. Latent danger of glide-snow avalanches on steep slopes on smooth ground. Beneath 1300 m there is hardly any snow on the ground.

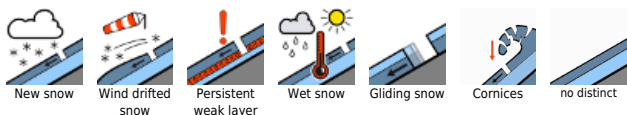
### Weather

Saturday evening, precipitation from the north, but only minor amounts (most near Osterhorn rante and Tennengebirge), snowfall level dropping to below 1500 m, then rising again on Sunday morning. Reduced visibility on Sunday, light rainfall possible, snowfall above 1800 m. Strong-to-stormy westerly winds. At 1500 m: 0 to +3 degrees; at 2000 m: -3 to 0 degrees; at 3000 m: -8 to -4 degrees.

### Outlook

The gliding snow problem will persist, mild temperatures and lots of sunshine will further moisten the snowpack.

#### Avalanche problems



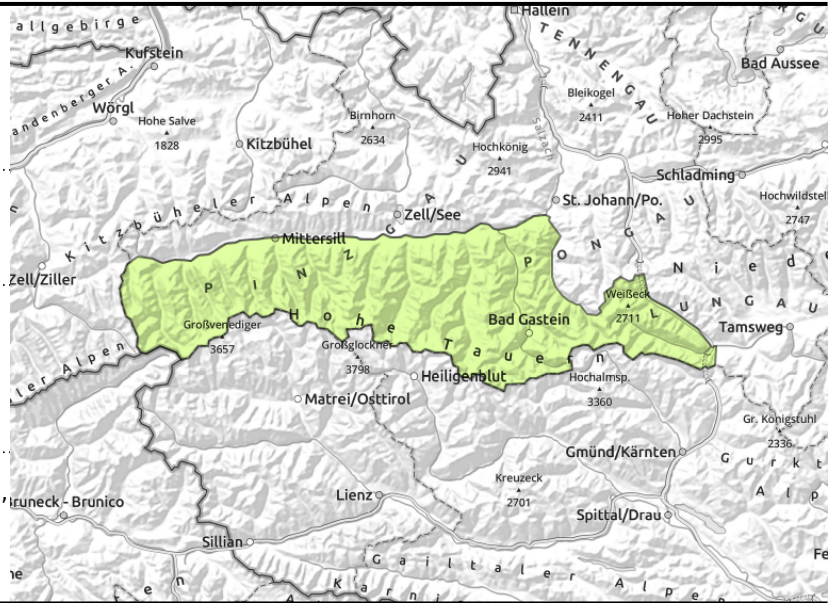
#### Danger ratings



#### Expositions



**Großvenedigergruppe Nord, Großvenedigergruppe Alpenhauptkamm, Glocknergruppe Nord, Glocknergruppe Alpenhauptkamm, Goldberggruppe Nord, Goldberggruppe Alpenhauptkamm, Ankogelgruppe, Muhr**



in extremely steep grass-covered terrain, isolated large avalanches possible, possible at any time of day



near to and distant from ridges, behind discontinuities, in gullies, steep bowls

## Fresh snowdrifts and persistent weak layer, gliding snow problem persists

Avalanche danger is generally low. Latent danger of glide-snow avalanches persists on steep grass-covered slopes, possible at any time of day or night, medium releases possible, on sunny slopes up to 2600 m. Avoid zones below glide cracks. Danger of wet loose-snow slides on sunny rough and rocky slopes will increase as the day progresses.

On Saturday night some snowfall and stormy winds will generate new snowdrift accumulations on N/E facing slopes, these will be trigger-prone on Sunday, but settle swiftly. Above 2200 m on shady slopes, older drifts can be triggered by large additional loading. The drifts are easily recognized, mostly near ridges, behind discontinuities and in very steep gullies and bowls. Slab avalanches from snowdrifts remain small, occasionally medium-sized. Caution of falling.

In few danger zones above 2600 m on sunny slopes there are weak layers in the uppermost part of the snowpack, triggerable by large additional loading, releases medium, occasionally large-sized.

### Snowpack structure

Due to some fresh snow and stormy winds, fresh drifts will blanket older drifts on shady slopes, in the interim they have settled. By Sunday morning below 2200 m, thin melt-freeze crusts will have formed, capable of bearing loads. Beneath these the snowpack is compact and thoroughly wet up to 2000 m, on sunny slopes up to 2600 m, wet down to the ground. Moistened snowpack forfeits its firmness.

### Weather

Saturday evening, precipitation from the north, but only minor amounts, snowfall level dropping to below 1500 m, then rising again on Sunday morning. Reduced visibility on Sunday, light rainfall possible, snowfall above 1800 m. Strong-to-stormy westerly winds. At 1500 m: 0 to +3 degrees; at 2000 m: -3 to 0 degrees; at 3000 m: -8 to -4 degrees.

### Outlook

The gliding snow problem will persist, mild temperatures and lots of sunshine will further moisten the snowpack. The snowdrift problem will recede.

Translated by Jeffrey McCabe, [www.creativtrans.com](http://www.creativtrans.com)

#### Avalanche problems



#### Danger ratings



#### Expositions

