

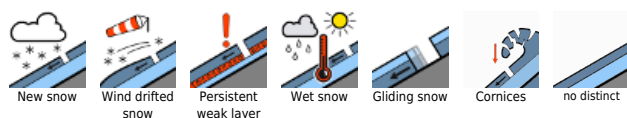
Beware freshly generated snowdrift accumulations

- | | | | |
|------------------------------|--|--|--|
|
2

1 | <p>1800 m</p> <p>Dientner Grasberge, Pongauer Grasberge, Kitzbüheler Alpen, Glemmtal, Niedere Tauern Nord, Chiemgauer Alpen, Heutal, Reiteralpe, Osterhorngruppe, Gamsfeldgruppe, Untersbergstock</p> | | |
|
1 | <p>Nockberge</p> | | |
|
2

1 | <p>1800 m</p> <p>Tennengebirge, Gosaukamm, Steinernes Meer, Hochkönig, Hagengebirge, Gölstock, Niedere Tauern Alpenhauptkamm, Niedere Tauern Süd, Ankogelgruppe, Muhr, Loferer und Leoganger Steinberge, Goldberggruppe Nord, Goldberggruppe Alpenhauptkamm, Glocknergruppe Alpenhauptkamm, Glocknergruppe Nord, Großvenedigergruppe Nord, Großvenedigergruppe Alpenhauptkamm, Oberpinzgauer Grasberge</p> | | |

Avalanche problems



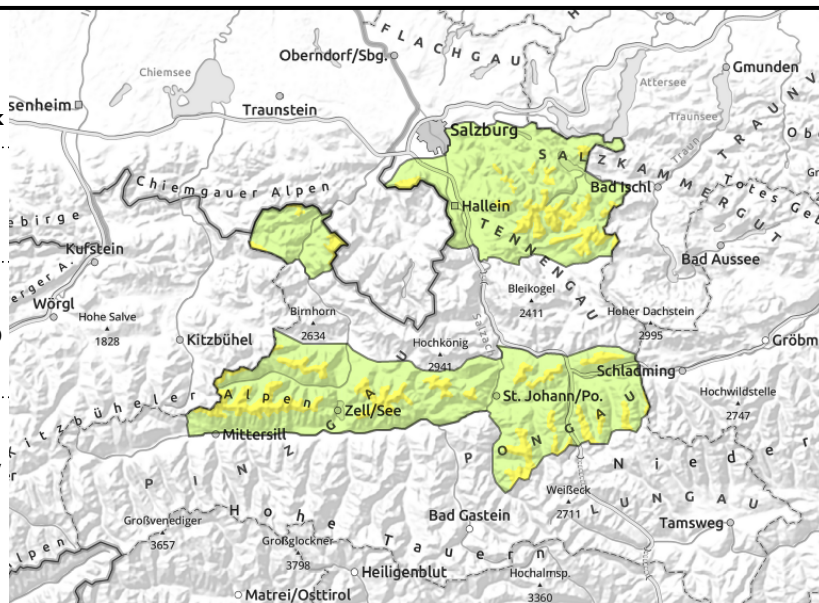
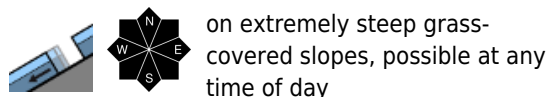
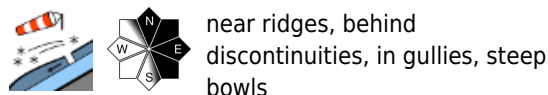
Danger ratings



Expositions



**Dientner Grasberge, Pongauer Grasberge,
 Kitzbüheler Alpen, Glemmtal, Niedere Tauern Nord,
 Chiemgauer Alpen, Heutal, Reiteralpe,
 Osterhorngruppe, Gamsfeldgruppe, Untersbergstock**



Fresh snowdrift accumulations

Due to fresh snow and wind, small fresh snowdrift accumulations have been generated. Above 1800 m these can be triggered by minimum additional loading, releases tend to be small. Beware danger of falling

Latent danger of glide-snow avalanches threatens on steep grass-covered slopes, possible at any time of day or night. Avoid zones below glide cracks.

Snowpack structure

The 10-20 cm of fresh snow and winds have generated fresh snowdrift accumulations. Below 1800 m, on sunny slopes up to summit levels, the drifts lie deposited atop a melt-freeze crust capable of bearing loads. Esp. on shady slopes above 1800 m it lies atop a still loose snowpack surface and is prone to triggering. In addition, weak layers are possibly forming inside the snowpack.

On high-altitude shady slopes there are faceted crystals near the surface, only seldom to be triggered.

Due to ground warmth the latent danger of glide-snow avalanches persists.

Weather

On Friday, heavy cloud cover, reduced visibility, isolated light showers (above 900 m as snow). In the afternoon, predominantly dry everywhere, the clouds will disperse. Winds will be moderate from the west, in Niedere Tauern stronger. At 2000 m: -4 degrees; at 3000 m: -9 degrees.

Outlook

The snowdrift problem will diminish due to warmth over the weekend.

Avalanche problems



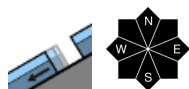
Danger ratings



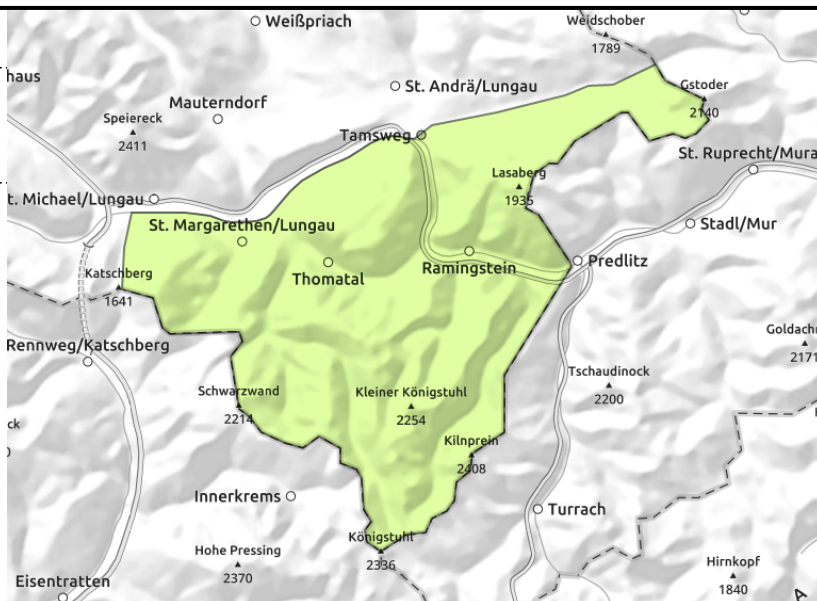
Expositions



Nockberge



on extremely steep grass-covered slopes, possible at any time of day



Danger of falling outweighs that of being buried in snow

Avalanche danger is low.

Glide-snow avalanches are a threat up to summit level. Where there is sufficient snow on the ground, large-sized releases are possible, though most are small-to-medium. Avoid zones below glide cracks.

Snowpack structure

The snowpack layering is favorable by and large.

Due to warmth of the ground and moistness of the snowpack, increased glide-snow activity can be expected.

Weather

Extended sunny phases in the Nockberge in the morning, it will remain dry there. Winds will be moderate from the northwest. At 2000 m: -4 degrees.

Outlook

Avalanche danger levels are not expected to change significantly.

Avalanche problems



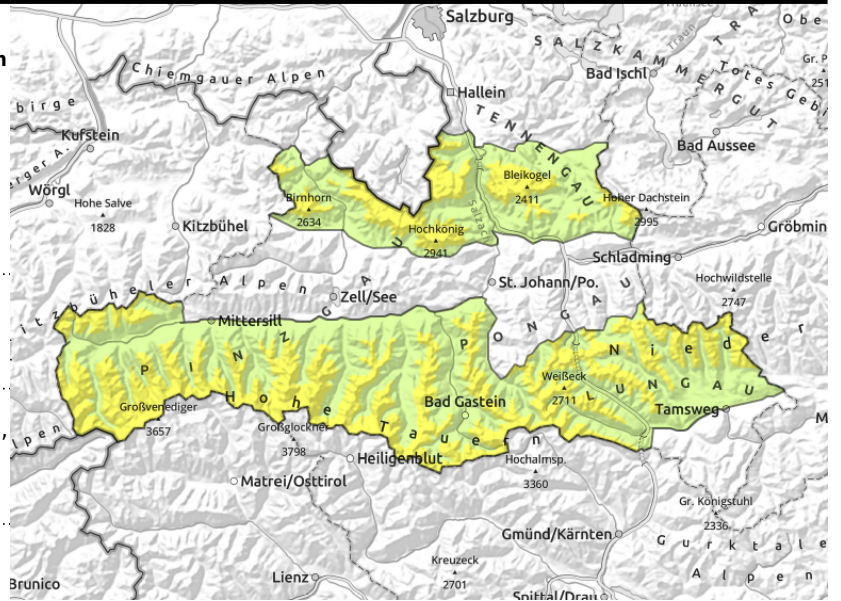
Danger ratings



Expositions



Tennengebirge, Gosaukamm, Steinernes Meer, Hochkönig, Hagengebirge, Göllstock, Niedere Tauern Alpenhauptkamm, Niedere Tauern Süd, Ankogelgruppe, Muhr, Loferer und Leoganger Steinberge, Goldberggruppe Nord, Goldberggruppe Alpenhauptkamm, Glocknergruppe Alpenhauptkamm, Glocknergruppe Nord, Großvenedigergruppe Nord, Großvenedigergruppe Alpenhauptkamm, Oberpinzgauer Grasberge



1800 m



near to and distant from ridges, behind discontinuities, in gullies, steep bowls



in extremely steep grass-covered terrain, isolated large avalanches possible, possible at any time of day

Fresh snowdrifts and persistent weak layer

Avalanche danger is moderate above 1800 m, low below that altitude.

Fresh snowfall and wind have generated fresh snowdrift accumulations. Below 1800 m, on sunny slopes up to summit levels, the drifts lie deposited atop a melt-freeze crust capable of bearing loads. Esp. on shady slopes above 1800 m it lies atop a still loose snowpack surface and is prone to triggering. In addition, weak layers are possibly forming inside the snowpack.

A layer of faceted crystals which formed in mid-January is blanketed by a thin melt-freeze crust on steep sunny slopes. Where there is a melt-freeze crust, faceted crystals are large and constitute a weak layer in the old snowpack.

Due to ground warmth the latent danger of glide-snow avalanches persists.

Snowpack structure

The 10-20 cm of fresh snow and winds have generated fresh snowdrift accumulations. Below 1800 m, on sunny slopes up to summit levels, the drifts lie deposited atop a melt-freeze crust capable of bearing loads. Esp. on shady slopes above 1800 m it lies atop a still loose snowpack surface and is prone to triggering. In addition, weak layers are possibly forming inside the snowpack.

On high-altitude shady slopes there are faceted crystals near the surface, only seldom to be triggered.

Due to ground warmth the latent danger of glide-snow avalanches persists.

Weather

About 10-20 cm of fresh snow is anticipated, up to 30 cm in the Northern Alps. On Friday, heavy cloud cover, reduced visibility, isolated light showers (above 900 m as snow). On the southern flank of the Alps, extended sunny phases and predominantly dry everywhere, the clouds will disperse. Winds will be moderate from the west, in Niedere Tauern stronger. At 2000 m: -4 degrees; at 3000 m: -9 degrees.

Outlook

The snowdrift problem will diminish due to warmth over the weekend. The persistent weak layer

Avalanche problems



Danger ratings



Expositions



persists.

Translated by Jeffrey McCabe, www.creativtrans.com

Avalanche problems



Danger ratings



Expositions

