

Persistent-weak-layer problem at high-alpine altitudes on steep sunny slopes

	Dientner Grasberge, Pongauer Grasberge, Kitzbüheler Alpen, Glemmtal, Niedere Tauern Nord, Chiemgauer Alpen, Heutal, Reiteralpe, Osterhorngruppe, Gamsfeldgruppe, Untersbergstock	
	Nockberge	
	2500 m Tennengebirge, Gosaukamm, Steinernes Meer, Hochkönig, Hagengebirge, Göllstock, Niedere Tauern Alpenhauptkamm, Niedere Tauern Süd, Ankogelgruppe, Muhr, Loferer und Leoganger Steinberge, Goldberggruppe Nord, Goldberggruppe Alpenhauptkamm, Glocknergruppe Alpenhauptkamm, Glocknergruppe Nord, Großvenedigergruppe Nord, Großvenedigergruppe Alpenhauptkamm, Oberpinzgauer Grasberge	

Avalanche problems 	Danger ratings 	Expositions
-------------------------------	---------------------------	------------------------

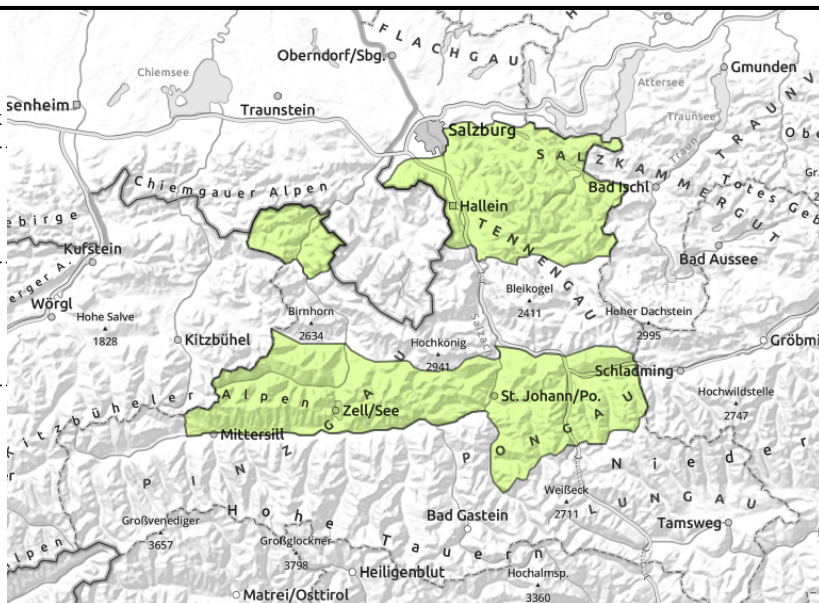
Dientner Grasberge, Pongauer Grasberge, Kitzbüheler Alpen, Glemmtal, Niedere Tauern Nord, Chiemgauer Alpen, Heutal, Reiteralpe, Osterhorngruppe, Gamsfeldgruppe, Untersbergstock



small/thin snowdrift patches



on extremely steep grass-covered slopes, possible at any time of day



Small fresh snowdrift accumulations

Due to fresh snow and wind, small fresh snowdrift accumulations will be generated during the course of the day. Above 2000 m these can be triggered by minimum additional loading, releases tend to be small. Beware danger of falling

Latent danger of glide-snow avalanches threatens on steep grass-covered slopes, possible at any time of day or night. Avoid zones below glide cracks.

Snowpack structure

Due to good nocturnal outgoing radiation and dry air the snowpack was able to dry out and form a melt-freeze crust up to 1800 m, on south-facing slopes up to over 2000 m, which is capable of bearing loads.

On high-altitude shady slopes there are near-surface layers of faceted crystals which are occasionally prone to triggering.

Latent danger of glide-snow avalanches threatens on steep grass-covered slopes, possible at any time of day or night. Avoid zones below glide cracks.

Weather

Clear nocturnal skies are expected. Thursday will start heavily overcast, a cold front will spread rainfall and snowfall in the morning hours, visibility will deteriorate, snowfall level at 1400 m, dropping to 1000 m by evening. On the northern flank of the Alps: 10-20 cm of fresh snow expected, more in the northern barrier cloud regions, on the southern flank of the Alps 5-10 cm. Brisk to strong W/NW winds, gusts up to 70-80 km/hr at high altitudes. At 2000 m: dropping from +1 to -3 degrees; at 3000 m: from -4 to -7 degrees. On Thursday night, overcast skies, light snow showers.

Outlook

Avalanche danger levels are not expected to change significantly.

Avalanche problems



Danger ratings



Expositions



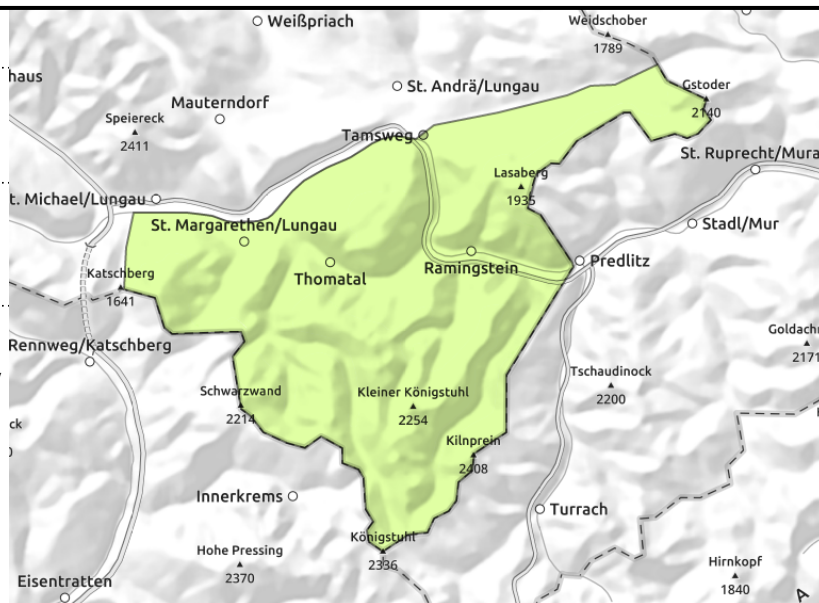
Nockberge



thin snowdrift patches, in gullies, steep bowls



on extremely steep grass-covered slopes, possible at any time of day



Danger of falling outweighs that of being buried in snow

Avalanche danger is low.

Small fresh snowdrift accumulations will be generated during the course of the day due to fresh snowfall and wind. Above 1800 m these can be triggered even by minimum additional loading, releases will be small. Caution: acute danger of falling.

Glide-snow avalanches are a threat up to summit level. Where there is sufficient snow on the ground, large-sized releases are possible, though most are small-to-medium. Avoid zones below glide cracks.

Snowpack structure

The snowpack layering is favorable by and large.

Freshly generated snowdrift accumulations are easy to recognize and small-sized.

Due to warmth of the ground and moistness of the snowpack, increased glide-snow activity can be expected.

Weather

Clear nocturnal skies are expected. Thursday will start heavily overcast, a cold front will spread rainfall and snowfall in the morning hours, visibility will deteriorate, snowfall level at 1400 m, dropping to 1000 m by evening. On the northern flank of the Alps: 10-20 cm of fresh snow expected, more in the northern barrier cloud regions, on the southern flank of the Alps 5-10 cm. Brisk to strong W/NW winds, gusts up to 70-80 km/hr at high altitudes. At 2000 m: dropping from +1 to -3 degrees; at 3000 m: from -4 to -7 degrees. On Thursday night, overcast skies, light snow showers.

Outlook

Avalanche danger levels are not expected to change significantly.

Avalanche problems



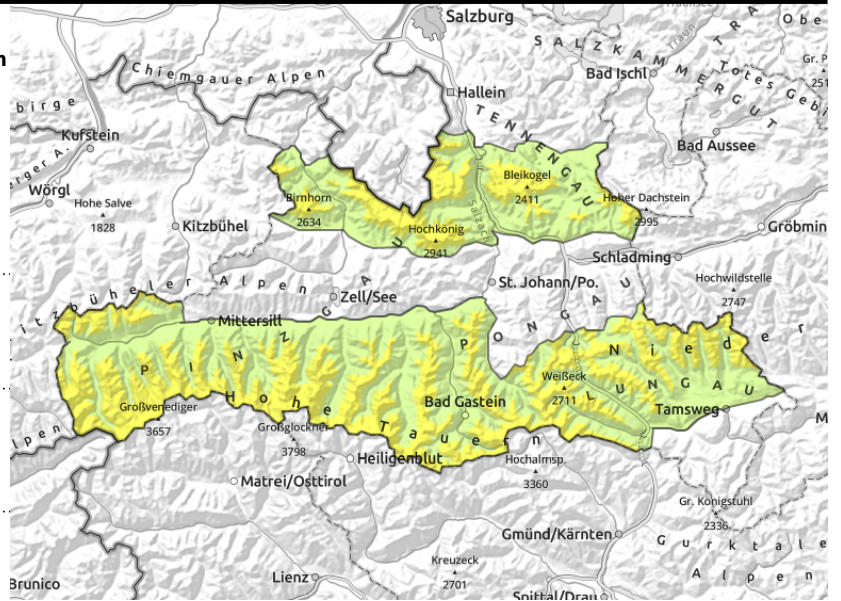
Danger ratings



Expositions



Tennengebirge, Gosaukamm, Steinernes Meer, Hochkönig, Hagengebirge, Göllstock, Niedere Tauern Alpenhauptkamm, Niedere Tauern Süd, Ankogelgruppe, Muhr, Loferer und Leoganger Steinberge, Goldberggruppe Nord, Goldberggruppe Alpenhauptkamm, Glocknergruppe Alpenhauptkamm, Glocknergruppe Nord, Großvenedigergruppe Nord, Großvenedigergruppe Alpenhauptkamm, Oberpinzgauer Grasberge



2500 m



triggerable in few spots in outlying terrain



in extremely steep grass-covered terrain, isolated large avalanches possible, possible at any time of day

Fresh snowdrifts and persistent weak layer

Avalanche danger is moderate above 2500 m, low below that altitude. In the few danger zones, weak layers in the uppermost part of the snowpack above 2500 m can be triggered by 1 person, esp. in transitions from shallow to deep snow and on steep sunny slopes. In isolated cases the releases can be large-sized. Small fresh snowdrift accumulations will be generated during the course of the day due to fresh snowfall and wind. Above 1800 m these can be triggered even by minimum additional loading, releases will be small. Danger of naturally triggered glide-snow avalanches below 2600 m persists, larger sized avalanches are possible in high altitude starting zones.

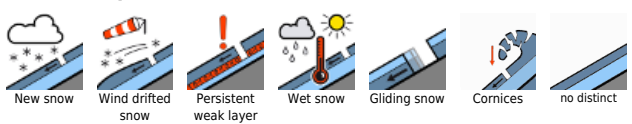
Snowpack structure

A layer of faceted crystals which formed in mid-January is blanketed by a thin melt-freeze crust on steep sunny slopes. Where there is a melt-freeze crust, faceted crystals are large and constitute a weak layer in the old snowpack. Due to good nocturnal outgoing radiation and dry air the snowpack was able to dry out and form a melt-freeze crust up to 1800 m, on south-facing slopes up to over 2000 m, which is capable of bearing loads. Moist snowpack at ground level, glide-snow avalanches can be expected.

Weather

Clear nocturnal skies are expected. Thursday will start heavily overcast, a cold front will spread rainfall and snowfall in the morning hours, visibility will deteriorate, snowfall level at 1400 m, dropping to 1000 m by evening. On the northern flank of the Alps: 10-20 cm of fresh snow expected, more in the northern barrier cloud regions, on the southern flank of the Alps 5-10 cm. Brisk to strong W/NW winds, gusts up to 70-80 km/hr at high altitudes. At 2000 m: dropping from +1 to -3 degrees; at 3000 m: from -4 to -7 degrees. On Thursday night, overcast skies, light snow showers.

Avalanche problems



Danger ratings



Expositions



Outlook

Avalanche danger levels are not expected to change significantly.

Translated by Jeffrey McCabe, www.creativtrans.com

Avalanche problems



Danger ratings



Expositions

