

Considerable snowdrift problem at high altitudes

	Osterhorngruppe, Gamsfeldgruppe, Dientner Grasberge, Pongauer Grasberge, Kitzbüheler Alpen, Glemmtal, Chiemgauer Alpen, Heutal, Reiteralpe, Untersbergstock, Niedere Tauern Nord, Oberpinzgauer Grasberge	
	Nockberge	
	Tennengebirge, Gosaukamm, Steinernes Meer, Hochkönig, Hagengebirge, Göllstock, Niedere Tauern Alpenhauptkamm, Niedere Tauern Süd, Ankogelgruppe, Muhr, Loferer und Leoganger Steinberge, Goldberggruppe Nord, Goldberggruppe Alpenhauptkamm, Glocknergruppe Alpenhauptkamm, Glocknergruppe Nord, Großvenedigergruppe Nord, Großvenedigergruppe Alpenhauptkamm	

Avalanche problems



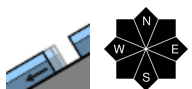
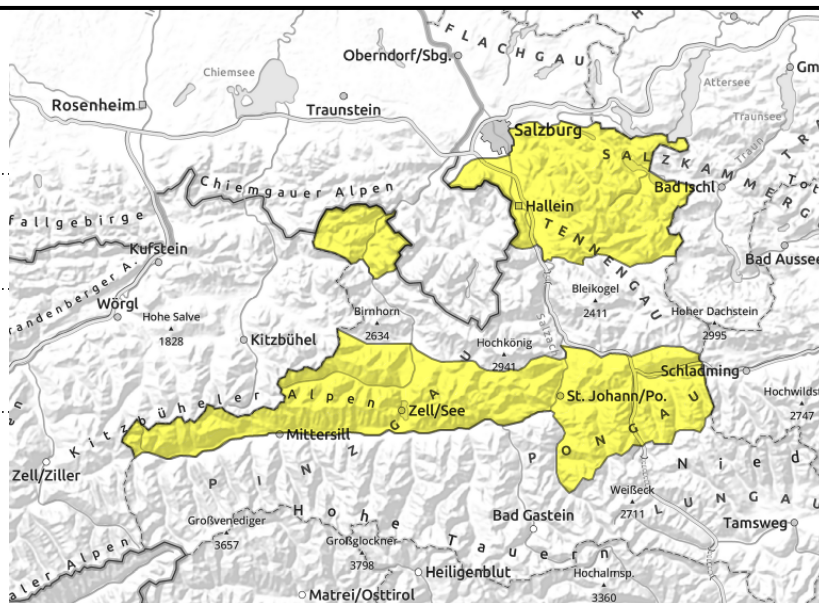
Danger ratings



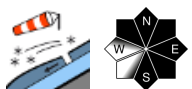
Expositions



**Osterhorngruppe, Gamsfeldgruppe, Dientner
 Grasberge, Pongauer Grasberge, Kitzbüheler Alpen,
 Glemmtal, Chiemgauer Alpen, Heutal, Reiteralpe,
 Untersbergstock, Niedere Tauern Nord,
 Oberpinzgauer Grasberge**



on extremely steep grass-
covered slopes



small/thin snowdrift patches

Main problem: gliding snow

Avalanche danger is MODERATE. Avalanches can trigger at any time of day or night naturally as long as there is sufficient snow on the ground and grow to medium size, sometimes large size. Avoid zones beneath glide cracks.

Above 2000 m, small snowdrifts are prone to triggering, most releases are small.

Small-to-medium naturally triggered loose-snow avalanches can be expected in extremely steep terrain due to solar radiation.

Snowpack structure

The snowpack is thoroughly wet up to 1700 m on east-facing slopes, up to 2000 m on west-facing slopes. The 5-15 cm of fresh snow on Friday night is bonding well with the moist snowpack surface, the fresh snowdrifts will be prone to triggering only for a short time.

Due to wetness of the snowpack, increased glide-snow activity can be expected on Saturday, despite the lower temperatures.

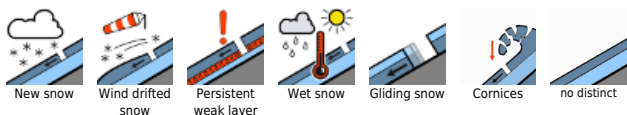
Weather

On Friday evening a cold front will pass through bringing heavy rainfall/snowfall above 1500 m. By midnight the snowfall level will drop to 700 m. The latter part of the night will be dry. About 10 cm of fresh snow is expected. The NW winds will intensify temporarily (at 2000 m, 90 km/hr), slackening off in the latter part of the night. On Saturday, residual clouds will swiftly disperse, the sun will take over. At 2000 m: -7 to -3 degrees.

Outlook

Avalanche danger levels are not expected to change significantly.

Avalanche problems



Danger ratings



Expositions



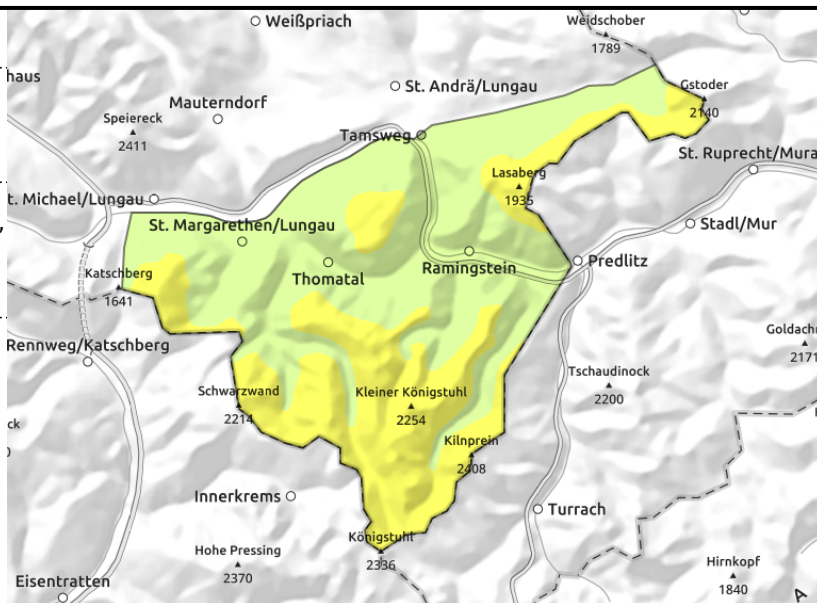
Nockberge



near to and distant from ridges, behind discontinuities, in gullies, steep bowls



on extremely steep grass-covered slopes, possible at any time of day



Pay heed to danger zones due to snowdrifts

Avalanche danger is moderate above 2000 m, below that altitude danger is low. Danger zones due to fresh drifts occur above 2300 m in NW/E/SW aspects on steep slopes, behind discontinuities and in gullies and bowls in all aspects, often a medium avalanche can be triggered by 1 person. Glide-snow avalanches threaten up to summit levels, even large-sized releases are possible, though seldom. Avoid zones below glide cracks.

Snowpack structure

The snowpack is thoroughly wet up to 1700 m on east-facing slopes, up to 2000 m on west-facing slopes. The 5-15 cm of fresh snow on Friday night is bonding well with the moist snowpack surface, the fresh snowdrifts will be prone to triggering only for a short time.

Due to wetness of the snowpack, increased glide-snow activity can be expected on Saturday, despite the lower temperatures.

Weather

On Friday evening a cold front will pass through bringing heavy rainfall/snowfall above 1500 m. By midnight the snowfall level will drop to 700 m. The latter part of the night will be dry. About 10 cm of fresh snow is expected. The NW winds will intensify temporarily (at 2000 m, 90 km/hr), slackening off in the latter part of the night. On Saturday, residual clouds will swiftly disperse, the sun will take over. At 2000 m: -7 to -3 degrees.

Outlook

Avalanche danger levels are not expected to change significantly.

Avalanche problems



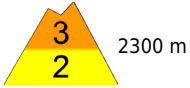
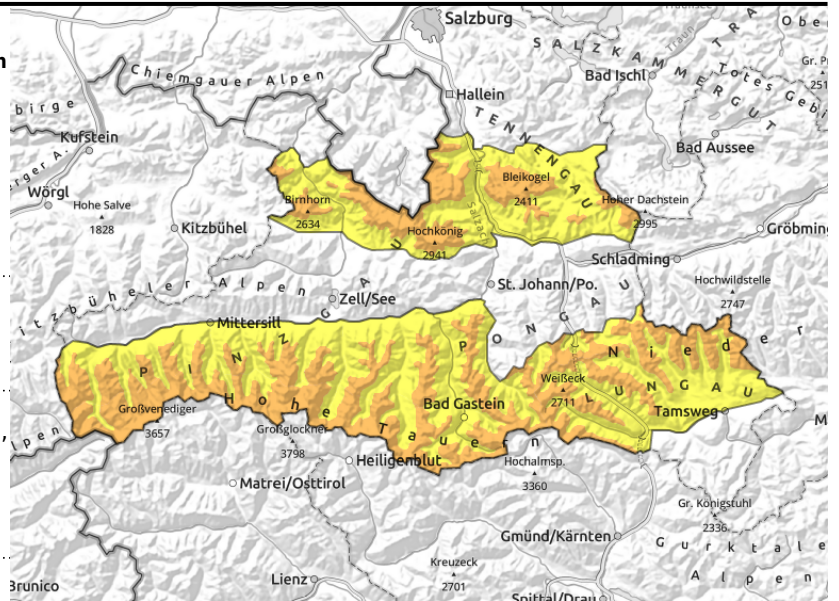
Danger ratings



Expositions



Tennengebirge, Gosaukamm, Steinernes Meer, Hochkönig, Hagengebirge, Göllstock, Niedere Tauern Alpenhauptkamm, Niedere Tauern Süd, Ankogelgruppe, Muhr, Loferer und Leoganger Steinberge, Goldberggruppe Nord, Goldberggruppe Alpenhauptkamm, Glocknergruppe Alpenhauptkamm, Glocknergruppe Nord, Großvenedigergruppe Nord, Großvenedigergruppe Alpenhauptkamm



2300 m



near to and distant from ridges, behind discontinuities, in gullies, steep bowls, far-reaching drifts



in extremely steep grass-covered terrain, isolated large avalanches possible

Snowdrift problem increases with ascending altitude

Avalanche danger above 2300 m is CONSIDERABLE, below that altitude danger is moderate. The fresh snowdrifts can in many places on NW/N/S facing slopes be triggered as medium-sized avalanches even by 1 person. Danger zones swiftly increase with ascending altitude both in frequency and in size, occur mostly behind discontinuities (also distant from ridges) and in steep gullies and bowls. In addition, the danger of naturally triggered glide-snow avalanches persists below 2600 m. Small-to-medium naturally triggered loose-snow avalanches can be expected in extremely steep terrain due to solar radiation.

Snowpack structure

The 10-20 cm of fresh snow from Friday night is bonding well with the moist snowpack surface, the fresh snowdrifts will be prone to triggering only for a short time. In some places, fractures can occur down to more deeply embedded layers of the snowpack, also fractures down to soft layers near older drifts are possible. Below 1800 m the rain impact is reducing the firmness of the snowpack, reinforced gliding snow activity is being observed on steep grass-covered slopes. Small-to-medium naturally triggered loose-snow avalanches can be expected in extremely steep terrain due to solar radiation.

Weather

On Friday evening a cold front will pass through bringing heavy rainfall/snowfall above 1500 m. By midnight the snowfall level will drop to 700 m. The latter part of the night will be dry. About 10 cm of fresh snow is expected. The NW winds will intensify temporarily (at 2000 m, 90 km/hr), slackening off in the latter part of the night. On Saturday, residual clouds will swiftly disperse, the sun will take over. At 2000 m: -7 to -3 degrees.

Outlook

On Saturday, naturally triggered avalanches (loose snow) in sun-drenched terrain. Persistent snowdrift problem in high-alpine areas.

Avalanche problems



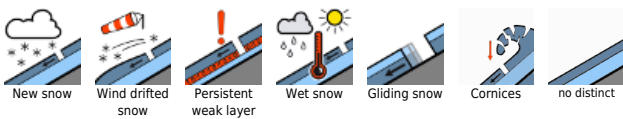
Danger ratings



Expositions



Avalanche problems



Danger ratings



Expositions

